



ISSR

INSTITUTE FOR SOCIAL SCIENCE RESEARCH

Annual Report 2012



THE UNIVERSITY
OF QUEENSLAND
AUSTRALIA

CONTENTS

4

STATEMENTS,
PROFILE

12

HIGHLIGHTS

18

RESEARCH
CLUSTERS

28

COMMERCIAL
SERVICES

30

RECOGNITION

36

ENGAGEMENT

41

RESEARCH
PROGRAMS

48

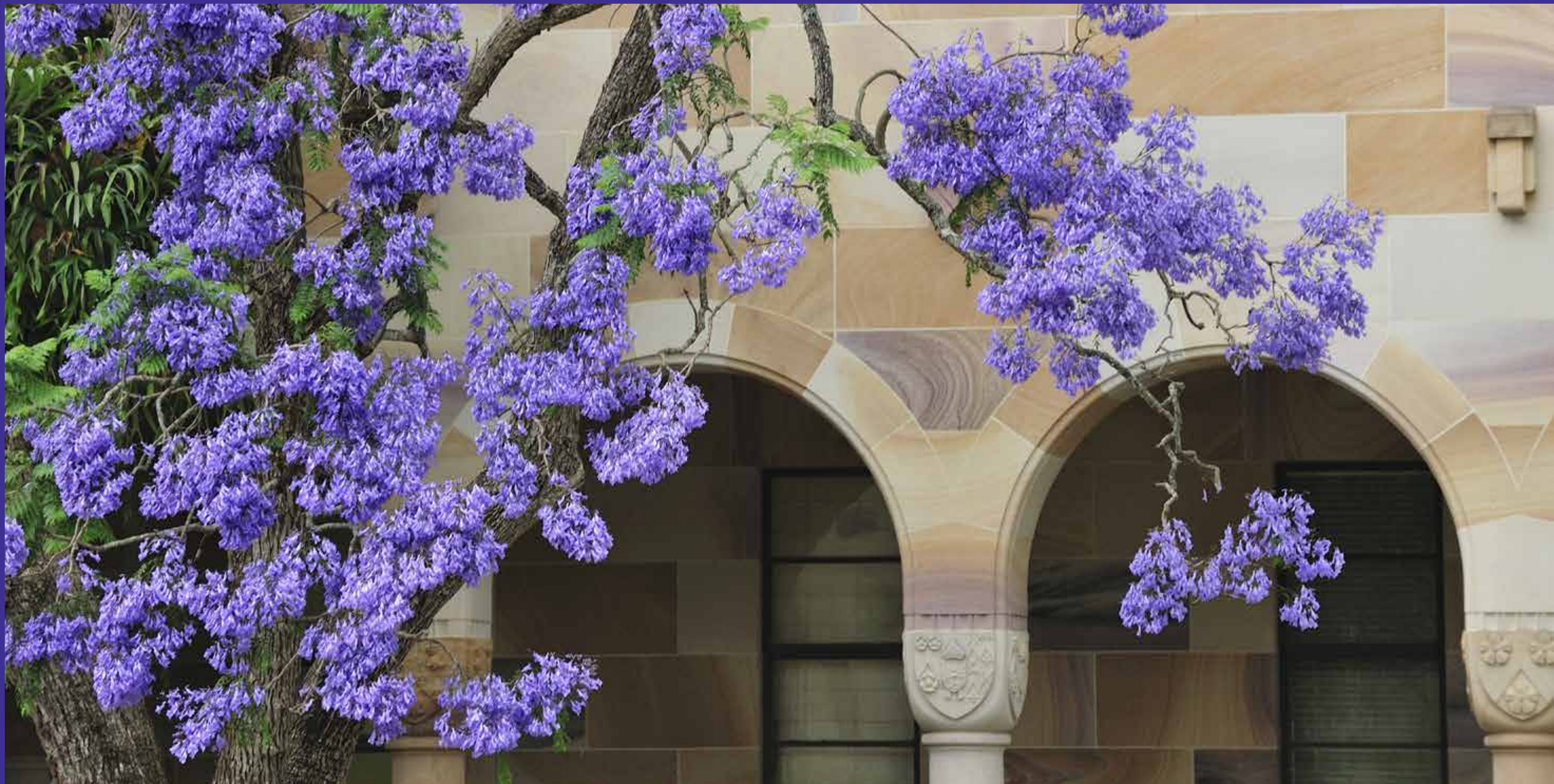
PEOPLE

57

PROJECTS

60

PUBLICATIONS



DIRECTOR'S MESSAGE

Professor Mark Western

“ This year we began the groundwork for developing a rigorous training program for Research and Higher Degree (RHD) students and the infrastructure to support a training experience that is both theoretical and applied.

This year we defined and strengthened our core expertise; applied social research, commercial statistics training, RHD training and defined our international engagement.

Our major projects of the national evaluation of the Paid Parental Leave Program (PPL) for the Federal Government continues as does an important program of work to address homelessness.

Our Employment and Education program were awarded the DAPP (Dad and Partner Pay) scheme evaluation - building on the excellent evaluation of PPL currently underway.

Professor Lorraine Mazerolle's prestigious ARC Laureate Fellowship in Experimental Criminology continues with Project Ability.

The Institute's relationship with UniQuest – the University's main commercialisation company – was strengthened with the Institute's Manager for Innovation and Commercial Development helping spearhead new activities in research and commercialisation.

ISSR is conducting important research on dual-frame telephone survey methodology recognising the importance of maintaining the veracity of survey data as the trend of mobile-only users grows and surveys that solely rely

solely on data from landlines users can be compromised.

In 2012 there was important groundwork conducted and progress in learning and engagement, we:

- Expanded our research into the causes of and effective responses to Indigenous disadvantage with new projects.

- Continued our relationships with international colleagues in Asia, Europe and North America and conducted an audit of our 2012 international engagement activities.

- Conducted preliminary work on our application to become an enrolling unit for RHD students and a ISSR distinctive applied social science training program

Appointed a senior project coordinator for ISSR Surveys to build commercial capability in surveys and data collection.

We co-produced the 2012 Innovation Profile which with the Faculty of Social and Behavioural Sciences. It is a biannual publication which profiles our combined research strengths.

Preliminary planning was conducted to redesign the website to better showcase our projects and researchers which prompted a categorisation of our research, not only by organisational unit, but by thematic clusters.

We look forward to building on the groundwork done in 2012 and strengthening our portfolio of research leadership, training and commercial services.



PROFILE EXPERISE & CAPABILITIES

< **The Institute for Social Science Research (ISSR) was founded in 2007 with a vision to use evidence-based social science research to find solutions to the challenges facing society today.**

Now one of the nation's leading social science institutes, ISSR is primarily funded through competitive grants, contract research and commercial services for data collection, data analysis and training and professional development.

The Institute has significant research infrastructure with Australia's largest academic Survey Research Facility and more than 100 research staff.

Institute Director Professor Mark Western is a Fellow of the Academy of the Social Sciences in Australia and the Chair of the Education and Human Society Research Evaluation Committee for the national assessment of university research quality, Excellence in Research for Australia (ERA).

Major institute projects include the evaluation of the Australian Paid Parental Leave Program for the Federal Government, the program of work to address homelessness and Professor Lorraine Mazerolle's prestigious Australian Research Council (ARC) Laureate Fellowship

in Experimental Criminology. ISSR has grown a matrix of cooperative connections with RHD students, researchers, disciplines, institutions, partners, governments and the community.

Research expertise clusters

- Communities
- Families
- Indigenous
- Sustainability
- Housing
- Policing
- Employment
- Policy & Evaluation
- Methodology

Core capabilities in

- Applied social science research
- Policy and program analysis and evaluation
- Social statistics and research methodology
- Commercial research and survey contracts
- Computer-intensive text analysis

PROFILE OVERVIEW

Mission

The Institute's mission is to undertake advanced problem-oriented social science research into the important issues facing Australia and our region, to contribute to the learning experiences of students at the University, and to engage with our stakeholders and partners in research and practice that makes a positive difference.

Organisation

ISSR has five research programs

Key Activities

- Pure and applied research
- Postgraduate and postdoctoral research training
- Program and policy analysis evaluations
- Social surveys
- Advanced statistical analysis
- Developing text analytical software
- Longitudinal research design
- Experimental and quasi-experimental research design
- Involvement in and leadership of national social science initiatives
- Commercial services including research, data collection, professional development and training

Partners

ISSR's leading role in Australian social science is shown by its participation in the following major national research initiatives:

AHURI – The Australian Housing and Urban Research Institute. ISSR hosts The University of Queensland AHURI Research Centre.

CEPS – The ARC Centre of Excellence in Policing and Security. ISSR houses The University of Queensland Node of this national centre.

Research Infrastructure

- Australia's largest academic Survey Research Facility (35 telephone interview workstations,

approximately 100 interviewers, program and survey management staff, software for telephone, online and mail surveys)

- Voxco software supporting mixed-mode survey data collection as well as questionnaire and call scripting, data processing, contact management, analysis and cross-tabulation, quota and sample management, and web-based reporting
- Licences to specialist analytics software (including SAS, Stata, MPLUS, LISREL, WinBUGS, MLWin, SPSS, R, GIS)
- A social science data archive (quantitative and qualitative data) with specialist infrastructure and personnel
- Training and research laboratory facilities for computer-intensive analysis of numeric and nonnumeric data
- Advanced statistics, modelling, archiving, file conversion, visualisation of large and complex datasets. and text analytics

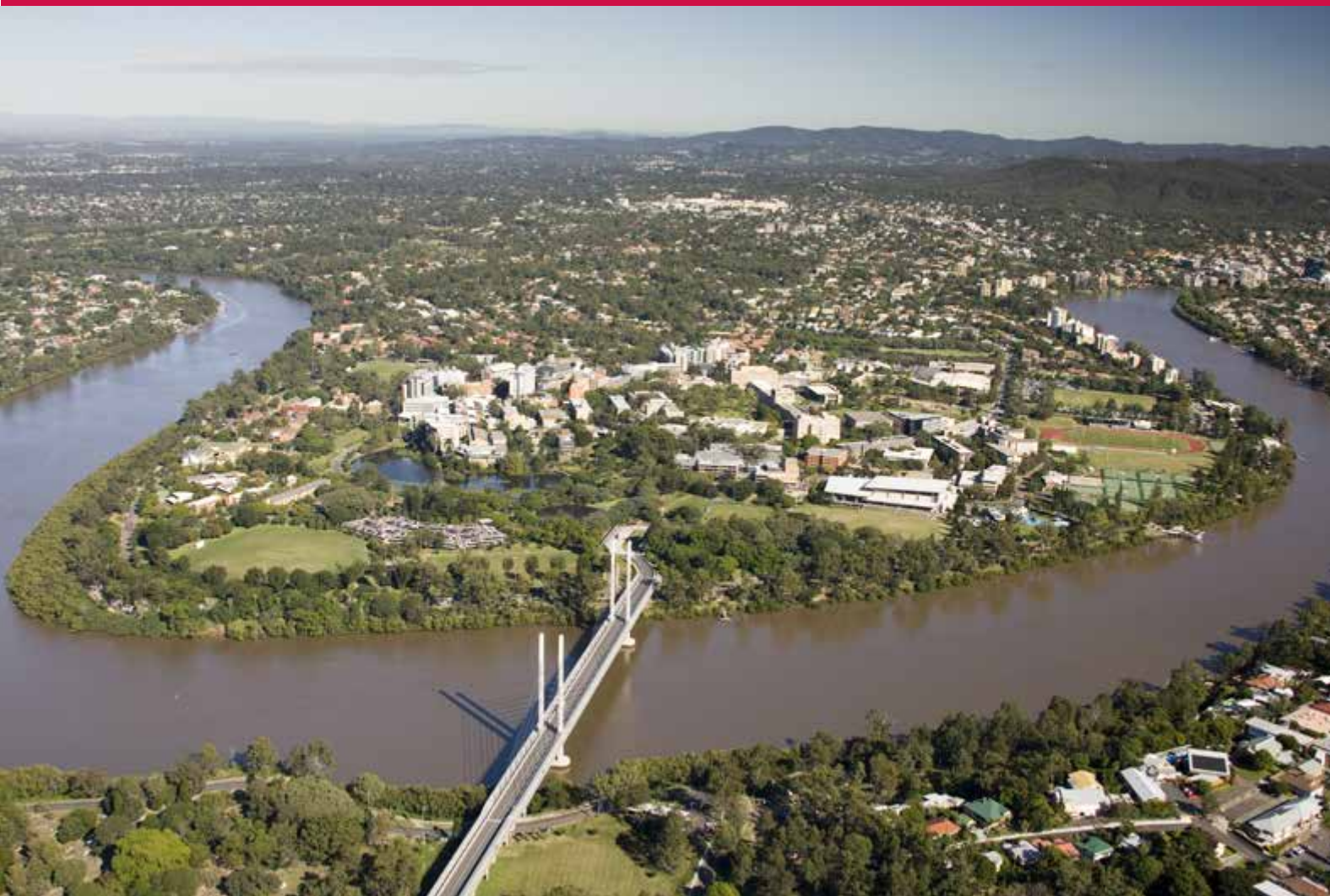
Commercial research services

- Policy and program evaluation
- Social impact evaluation
- Systematic reviews
- Continuing professional development training in research methods and evidence utilisation
- Text analytics
- Survey design
- Data collection
- International connections

Advanced text analytics software development

- HARVEST, a program which profiles, searches and filters unstructured data using concepts rather than keywords.
- Discursis, analysis of text-based communication through data in diverse forms, such as, conversations, web forums, and training scenarios.
- Leximancer uses scientific qualitative data analysis including concept visualisation and mapping.





SELECTED HIGHLIGHTS



The non-coverage of mobile phone only households by landline sampling frames is a source of bias that cannot be ignored.

Surge in mobile phone use impacts survey bias

The rapid uptake of mobile phone use and the growing number of mobile-only households has created challenges for social survey researchers.

Associate Professor Michele Haynes, Professor Mark Western and Dr Bernie Baffour of ISSR received seed funding through a UQ Collaboration and Industry Engagement Fund (CIEF) grant to progress research in dual-frame sampling methods in collaboration with industry partner, The Social Research Centre (SRC).

This challenge was also the focus of a 2012 workshop, Telephone Surveying and the Mobile Phone Only Population – hosted by ISSR and SRC.

ISSR program leader and statistician Associate Professor Michele Haynes, says the rapid growth of mobile-only households is a crucial methodological and statistical challenge. “The non-coverage of mobile phone only households by landline sampling frames is a source of bias that cannot be ignored,” she said.

“For many years researchers have been using telephones to gather social information from people and households – using Computer Assisted Telephone Interviewing (CATI). In the last 10 years the use of mobile phones has increased rapidly in Australia.

“In the last 12 months the number of mobile-only



households has increased by about 5 percent – so now it's up to about 20 percent and this is a big non-coverage issue.

“To make telephone surveys more representative we need to access people on mobile phones as well as landline phones but don't have lists of mobile phone numbers, or what we call sampling frames. Hence the term dual-frame comes in, that is, the use of both a landline sampling frame and a mobile sampling frame,” Associate Professor Haynes said.

Leader in this field from the United States, Dr Paul Lavrakas, says in the United States experience mobile phone only and mobile phone mostly households are estimated at 45 percent.

ISSR Director Professor Mark Western also addressed the workshop and is a strong advocate of dual-frame research.

“With the decline in landline only households and the increase in mobile-only households where 37 percent of 18 to 34 year olds live in mobile-only households – it is vital we build capacity in this area,” Professor Western said.

Wider agreement for water resource planning

With drought followed by floods in South East Queensland there is now more recognition of the value of water and the need for effective water resource management.

ISSR program leader, Professor Brian Head, led the Urban Water Security Research Alliance (UWSRA) project on Institutional Change in the Urban Water system in South East Queensland.

The project team, which included CSIRO's Tabatha Wallington and Cathy Robinson, examined how this package of measures was developed, including the inevitable stresses which emerged between the various State and local institutions.

The project focussed on the management of water during the period of the SEQ drought in 2002-2009 and identified the need for bridging or "boundary" organisations to help government and the community be better prepared for future crises.

Professor Head said boundary organisations which identified potential problems, examined evidence and encouraged wide discussion, were an alternative to the top-down approach to crisis management.

"The role of permanent boundary organisations is to

facilitate ongoing dialogue, so that if a similar major crisis occurs in five years time, a sound range of strategies and actions would have been debated and agreed," he said.

The project team spent three years examining the key institutions, relationships and factors impacting on the management of water in SEQ.

"One key issue was that the evidence base for water policy shifted during this period," Professor Head said. "The planners could no longer rely on average historical rainfall for water planning because of high variability and the possibility of longer term drought – so there was a new focus on the quality of evidence and analysis of various scenarios as the SEQ Water Strategy was developed.

"Another key issue we examined was the restructuring of roles and the shift in responsibility for water policy planning and delivery – new central bodies were set up and council assets were centralised.

"Our researchers examined these highly complex systems and concluded that to be successful, institutions require effective interaction across all levels of government as well as input from groups such as consumers, business and the media," he said.



The Australian Community Capacity Study

The Australian Community Capacity Study (ACCS) is a longitudinal research project that seeks to better understand the interrelationships between community resilience, ethnic diversity, crime, prejudice, disorder and inter-group violence.

ACCS is an initiative of researchers from the Institute for Social Science Research (ISSR) and the School of Social Sciences. It is led by criminologists, Dr Rebecca Wickes and Professor Lorraine Mazerolle, with collaborating researchers at Griffith University, Monash University, Harvard University and Duke University.

Funded by the Australian Research Council (ARC) the project comprises in-depth case studies and multiple survey waves involving approximately 10,000 residents living in 298 communities in Brisbane and Melbourne.

The project aims to better understand the community processes that explain spatial and temporal distribution of crime across neighbourhood types.



"The primary goal of ACCS is to better understand how changes in a community's social disadvantage, ethnic diversity and residential mobility impact upon the development of social networks and informal social control over time," Professor Mazerolle said.

ACCS began in 2005 and now includes four waves of "nested" surveys with over 10,000 residents living in 148 Brisbane suburbs and one wave of over 2,000 residents living across 150 Melbourne suburbs.

"The ARC has funded multiple waves of survey data collection, across multiple sites, to build knowledge and understanding of the stability and change of different neighbourhood characteristics and their impact on a range of social problems," Professor Mazerolle said.

"In combination with earlier waves of survey data, the Wave 4 ACCS will provide critical insights into preparing for future disasters in Australia and elsewhere," Dr Wickes said.

"Understanding and enhancing community resilience is a high priority as we face significant environmental and national security challenges. However, given the sudden and unexpected nature of disasters and threats, current research only provides post-event evaluations of community resilience," Dr Wickes said.

Top: Dr Wickes (left) and Professor Mazerolle
Left: the group of PhD and honours students who worked on the project (clockwise from left), Elise Sargeant, Anthony Kimpton, Suzanne Brumby, Lisa Durnian, Kathryn Ham, Melinda Chiment, Martina Baumer and Renee Zahnow





Research Clusters

We have categorised our research into nine broad clusters, or themes. The following section outlines the descriptions of the clusters and the projects that we have classified under those clusters.

This categorisation is not by organisational program, but links projects thematically across the organisation to draw out the strengths and connections of what we do and foster synergy across the Institute.

Some projects are classified under multiple clusters. See page 41 for the outline of our programs and our research leaders teams and page 55 for the 2012 grants list.

COMMUNITIES CLUSTER



Resilient and connected

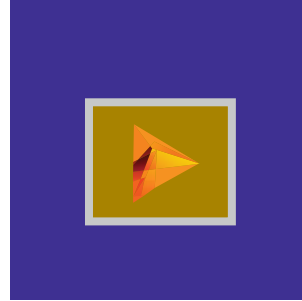
Communities are the places where people live, work, socialise and play. Our program of research explores the range of community dynamics that lead to resilient and healthy communities, as well as the factors that create vulnerabilities, crime, disorder and inter-group hostilities.

We study policies and programs that help build social cohesion, harmony and positive neighbouring relations.

We also work closely with industry partners to test, under randomised field trial conditions, innovative approaches for reducing crime and delinquency problems, increasing citizen perceptions of police and institutional legitimacy, and building the capacity for communities to self-regulate and prevent crime and disorder problems.

- Violent Crime in Developing Countries
- The National Security and Preparedness Study (NSPS)
- Multi-Site Trials of Third Party Policing: Project ABILITY
- The Queensland Community Engagement Trial
- Child Maltreatment and Wellbeing
- Australian Community Capacity Study
- Recycled Water Risk Communication
- Retirement Villages and Later Life Transitions
- Attitudes to Climate Change Adaptation
- The Impact of the Place of Living on Social Participation & Well-Being in Older Age
- Targeted Crime: Policing and Social Inclusion
- Models of Supporting Housing Evaluation
- Public responses to alternative water supplies
- Public Perceptions of Water Quality (Seqwater)
- Child Maltreatment and Wellbeing
- Australian Community Capacity Study
- Recycled Water Risk Communication

FAMILIES CLUSTER



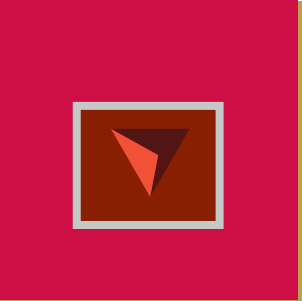
Dynamics and wellbeing over the life course

Families are an integral component of social life and are fundamental to the distribution of social and economic resources within and across generations.

Research in this cluster examines changes in pathways through the life course including the emergence of new patterns of family formation and dissolution, new forms of relationships and partnering, changing patterns of fertility and childrearing and the consequences of these trends for inequality and the wellbeing of men, women and children.

- Housing Transitions and Fertility
- Respectful Relationships Program Evaluation
- Multi-Site Trials of Third Party Policing: Project ABILITY
- The Impact of the Place of Living on Social Participation & Well-Being in Older Age
- Concentrations of Social Disadvantage
- Dad and Partner Pay Evaluation
- Social Networks & Health & Wellbeing
- For Better or For Worse? Understanding the Revolution in Married Life in Australia
- Social Networks in Labour Markets
- Child Maltreatment and Wellbeing
- Dad and Partner Pay Evaluation
- Social Networks & Health & Wellbeing

INDIGENOUS CLUSTER



Improved practical outcomes

Indigenous issues are embedded across all research clusters. The Institute works closely with the Aboriginal Environments Research Centre (AERC), which is hosted by the School of Architecture, within the Faculty of Engineering, Architecture and Information Technology.

The AERC is a nationally-recognised multidisciplinary centre for research and teaching into the culture, environment, housing and architecture of Aboriginal and Torres Strait Islander peoples.

Both the AERC and the Institute use strength-based approaches that acknowledge the existing socioeconomic strengths of communities, are based on evidence of successful practice and results, build constructive collaborations to address prevalent inter-cultural social problems, seek new economic enterprises for remote area and rural groups, and promote self-determination and quality of life of Indigenous people.

- Evaluation of the 'Street to Home' Initiative
- Aboriginal Responses to Climate Change
- Aboriginal Lifeworlds, Conditionality, and Housing Outcomes
- Indigenous Home Ownership on Communal Land Titles
- Overcrowding for Indigenous Households in Non-Remote Areas
- Remote Indigenous Housing Procurement and Past-Occupancy Outcomes
- Pathways out of Homelessness for Rough Sleepers
- Developing Effective Services in Response to Indigenous Homelessness
- Models of Supporting Housing Evaluation
- From Disadvantage to Success? Indigenous Participation in Urban Marketplace

SUSTAINABILITY CLUSTER



Sustainable environment and communities

The Sustainability cluster of research aims to address issues related to sustainability, climate change, environmental policy, and resource management in the local, regional, national and global context.

The Institute has an important working relationship with the Urban Water Security Research Alliance (UWSRA) to address water scarcity and community attitudes towards this issue.

- The Impact of School Design and Infrastructure on Educational Outcomes
- Use of Allied Health Services
- Collaboration and Environmental Policy
- Attitudes to Climate Change Adaptation
- Brisbane Common Ground
- Aboriginal Responses to Climate Change
- Concentrations of Social Disadvantage
- Environmental Sustainability in Residential Housing
- Strategies of Influence for Water Sensitive Cities
- Systematic Social Analysis
- Behaviour Change for Water Sensitive Cities
- Public Perceptions of Water Quality (Seqwater)
- Regulatory Frameworks for Water Sensitive Cities
- Recycled Water Risk Communication
- Retirement Villages and Later Life Transitions
- Preventing First Time Homelessness
- Evaluation of the 'Street to Home' Initiative
- Sustainable Regions Research (CRN, SCU collaboration)
- Collaboration and Environmental Policy
- Attitudes to Climate Change Adaptation

HOUSING CLUSTER



Affordability, access and homelessness

The housing cluster is one of the Institute's core areas of expertise. The Institute has a strong working relationship with Government and service delivery providers through a suite of projects examining social housing, Indigenous housing and homelessness.

A particular focus of the cluster is to understand the causes of homelessness and to evaluate homelessness services and the effectiveness of service delivery by governments and agencies. A key feature of this cluster is its multi-methods approach: utilising qualitative methods to examine and understand experiences and personal histories, and quantitative methods to investigate general trends and make sense of large-scale complex processes and patterns.

- Housing Transitions and Fertility
- Brisbane Common Ground
- The Impact of the Place of Living on Social Participation & Well-Being in Older Age
- Aboriginal Lifeworlds, Conditionality, and Housing Outcomes
- Indigenous Home Ownership on Communal Land Titles
- Overcrowding for Indigenous Households in Non-Remote Areas
- Remote Indigenous Housing Procurement and Past-Occupancy Outcomes
- Concentrations of Social Disadvantage
- Reconceptualising Housing Need in 21st Century Australian Housing Policy
- Pathways out of Homelessness for Rough Sleepers
- Overcrowding for Indigenous Households in Non-Remote Areas
- Remote Indigenous Housing Procurement and Past-Occupancy Outcomes
- Concentrations of Social Disadvantage
- Reconceptualising Housing Need in 21st Century Australian Housing Policy
- Pathways out of Homelessness for Rough Sleepers
- Developing Effective Services in Response to Indigenous Homelessness
- Environmental Sustainability in Residential Housing
- Housing Support Options for Older Homeless People
- 'Ending Homelessness' Strategies
- Inter-organisational Collaboration in Response to Homelessness

POLICING CLUSTER



Crime control and community safety

The Policing Cluster of Research at ISSR focuses on contributing to the international evidence base on policing best practice.

Our flagship projects use Randomised Controlled Trial (RCT) methods to test, evaluate and assess program effectiveness. The Queensland Community Engagement Trial (QCET) was the world's first test of procedural justice policing and is being replicated in four countries around the world.

The Laureate Fellowship ABILITY Truancy Trial tests the effectiveness of policing partnerships. Underpinning much of our policing program of work is building knowledge on police legitimacy at the local, state and national levels.

Using survey, experimental and quantitative statistical methods, our policing cluster of scholars works closely with police practitioners to ensure our work is both academically at the cutting edge of scholarship, and also relevant and helpful to police practitioners and policy makers.

- Violent Crime in Developing Countries
- The National Security and Preparedness Study (NSPS)
- Multi-Site Trials of Third Party Policing: Project ABILITY
- The Queensland Community Engagement Trial
- Non-linear Dynamic Models
- The Counter Terrorism i-Library
- Terrorism and CT in SE Asia
- Understanding How Criminals Decide Where and When to Offend
- Child Maltreatment and Wellbeing
- Australian Community Capacity Study
- DPMP Drug Policy Modelling Program
- Evaluation of "Coordinated Response to Young People at Risk" (CRYPAR)
- Control Chart Methodology to Monitor Workload & Performance Measures
- Systematic Review of Legitimacy in Policing
- Intelligence Methods
- Targeted Crime: Policing and Social Inclusion
- Youth Gang Violence
- HarvestR Validation
- Building Police Partnerships

EMPLOYMENT CLUSTER



Work, workforces and labour markets

Paid work has a major impact on the most important opportunities and experiences in almost everyone's life. The employment cluster of research focuses on understanding the social arrangements and social institutions that shape patterns of education and employment.

This research cluster focuses on social capital, the labour market, family income, and the social and contextual factors that mediate and modify these workforce dynamics.

The Institute won two major competitive contracts to review and evaluate the Federal Government's Paid Parental Leave scheme (PPL) and the Dad and Partner Pay scheme (DAPP).

- Understanding the Spatial and Social Drivers of Employment Transitions
- Geographical Flexibility in Australia
- Government Agencies use of Evidence
- Collective Agreements & Social Security in Comparative Perspective
- Paid Parental Leave Evaluation
- Dad and Partner Pay Evaluation
- Developing an Effective Homelessness Workforce
- Review of Gender and Development Training
- Social Networks & Health & Wellbeing
- Young Public Servants
- Indigenous Employment in QLD Public Service

POLICY CLUSTER



Policy and program review

The Policy cluster takes in work in all other clusters. All research in the Institute seeks to contribute directly or indirectly to understanding, informing and influencing policy. Much of this is applied and problem-oriented and aimed at evaluating the effectiveness, affordability and viability of policies.

One of the strengths of the Institute is to provide research as an evidence base for informed decisionmaking around policy. For good governance and effective use of limited resources, it is essential to have an evidence-based approach. But high quality research is not sufficient for sound policy. Researchers in the institute also examine how governments use evidence and what enables or limits the use of research by policymakers.

- Utilisation of Social Science Research
- Sustainable Regions Research (CRN, SCU collaboration)
- Government Agencies use of Evidence
- Collaboration and Environmental Policy
- Collective Agreements & Social Security in Comparative Perspective
- Paid Parental Leave Evaluation
- Dad and Partner Pay Evaluation
- Pathways out of Homelessness for Rough Sleepers
- DPMP Drug Policy Modelling Program

METHODOLOGY CLUSTER



Innovations in data and methods

The Methodology cluster of research is focused on improving quantitative and qualitative research design, data collection and analysis. We develop and evaluate new approaches to research and train researchers and students to use best practice in research. The Institute has researchers with a full range of methodological skills, drawn from the disciplines of statistics, psychology, criminology, sociology, political science, anthropology, economics, archaeology, history, mathematics, science, architecture and geography.

As well as ensuring best-practice methodology to improve the veracity of evidence within the research, the Institute is also focused on developing and refining methodological skills. This involves the use of multi-methods approaches, including cross-faculty and cross-institutional collaborations to approach different social issues in innovative ways without the narrow confines of a singular discipline.

- Housing Transitions and Fertility
- Respectful Relationships Program Evaluation
- Enhancing social research in Australia using dual-frame telephone surveys
- FaHCSIA Longitudinal Analysis Training
- Situation Tracking in Large Data Streams
- Health and Hospitals Fund – Evaluation Framework
- The Impact of School Design and Infrastructure on Educational Outcomes
- Department of Health and Aging eHealth and Adverse Drug Events Study
- Establishment of the Australian Data Archive
- Sampling and estimation methodologies for dual frame telephone surveys in Australia
- Understanding the Spatial and Social Drivers of Employment Transitions
- Use of Allied Health Services
- The National Security and Preparedness Study (NSPS)
- Multi-Site Trials of Third Party Policing: Project ABILITY
- The Queensland Community Engagement Trial
- Dynamic social systems and adolescent alcohol and tobacco use: A new cusp catastrophe model
- Control Chart Methodology to Monitor Workload & Performance Measures
- Needlz: Enhanced search in qualitative databases
- The Counter Terrorism i-Library
- Review of Gender and Development Training
- Understanding How Criminals Decide Where and When to Offend
- ECQ Local Government Survey
- Australian Community Capacity Study
- HarvestR Validation
- Evaluation of “Coordinated Response to Young People at Risk” (CRYPAR)
- Non-linear Dynamic Models
- Utilisation of Social Science Research

COMMERCIAL SERVICES

26
COMMERCIAL
SERVICES

Providing commercial services is a core expertise of the Institute and provides approximately 15% of annual income. This year we developed the MFSAS program and continued our busy survey and specialist research services.

MFSAS program

The Methods for Statistical Analysis (MFSAS) program was developed this year with the successful pilot held in December 2012. It has been designed in a formal and a “targeted training” mode including these levels :

- **Introductory** ‘dealing with data’ courses, which cover the basics of data and data collection
- **Applied** ‘working with data’ courses, which introduce basic techniques for data analysis to identify appropriate analyses for research questions around similarity and difference, and analyse and interpret results
- **Advanced** ‘analysing complex datasets’ courses, which teach statistical techniques for analysing complex datasets and research questions

Evaluations

The Institute continues its strength in policy and program evaluations for government and public sector agencies using longitudinal studies, quantitative data analysis and qualitative analysis.

This year ISSR was awarded a \$550k project under its recent panel appointment with the Department of Families, Housing, Community Services and Indigenous Affairs (FaHCSIA) to evaluate the Australian Government’s Dad and Partner Pay (DaPP) scheme. The Institute is also:

- Leading the \$2.7 million national evaluation of the Paid Parental Leave (PPL) scheme for FaHCSIA
- Developing a framework for the evaluation of the national Health and Hospitals Fund (HHF) for the Department of Health and Ageing (DoHA)

- Evaluating an integrated system of services to address homelessness in Brisbane and Townsville for the Queensland Department of Communities.

Survey, data and analytics

ISSR has core strengths in the design and administration of large-scale social surveys and this year successfully completed a Queensland household survey (4,800 respondents) in relation to the proposed restructure of electoral arrangements for the Electoral Commission Queensland.

We provide commercial and in-house services in survey research, questionnaire development, sampling design, bench-marking analysis and have an in-house commercial data collection facility – a Computer Assisted Telephone Interviewing (CATI) laboratory.

In 2012 some of our key survey projects were for the:

- **Australian Community Capacity Study (ACCS)**; a longitudinal study where data is collected from 10,000 residents in Brisbane and Melbourne
- **Growing Australian Businesses report**, a study of Queensland business innovation for the Department of Science, Information Technology, Innovation and the Arts (DSITIA)
- **Enterprise and Innovation Research Program, Queensland University of Technology (QUT) Spontaneous Volunteering project**; social on the characteristics and motivations of volunteers who responded spontaneously to recent SEQ crisis events.

And our key benchmarking analysis:

- Community services workforces for FaHCSIA
- Benchmarking analysis on first wave survey data and in-depth interviews for our evaluation of the Paid Parental Leave (PPL) scheme

ISSR researchers lead the development of new analytics software and have successfully patented a range of applications for analysing text-based data in scientifically defensible ways, including Leximancer, HARVEST and Discursis. From 2013 the MFSAS program will be the sole training provider for the now commercialised Leximancer developed by ISSR researchers.



ISSR CATI laboratory (top) and a MFSAS training class



Professors Head and Baxter

RECOGNITION

“Appointment to the College signals that someone is internationally eminent in their field. It is both an individual achievement and something which the Institute collectively can be proud of.

ARC College appointment for leading social science researchers

Two senior professors at the Institute for Social Science Research (ISSR) were awarded with prestigious appointments to the Australian Research Council College (formerly known as College of Experts) – an acknowledgement that they are leaders in their field of research.

Institute Director Professor Mark Western congratulated Professors Janeen Baxter and Brian Head.

“Appointment to the College signals that someone is internationally eminent in their field. It is both an individual achievement and something which the Institute collectively can be proud of,” Institute Director Professor Western said.

“Members of the College are appointed by the CEO of the ARC and in addition to having a pivotal role in the assessment and funding of national competitive grants, also provide the ARC with strategic advice on developments in their fields of expertise,” he said.

Professor Baxter, who is also a professor in The School of Social Science, said she was honoured to be able to assist the ARC in this important role.

“I’m proud to be able to support the ARC. The ARC has provided significant funding for my research over many years.”

“Membership of the committee helps to raise the profile of ISSR, the School of Social Science and UQ more generally. I’m looking forward to working with the ARC and other members of the College from across Australia,” Professor Baxter said.

Professor Brian Head said it was a privilege to work with the ARC College.

“It’s certainly an honour for me and for ISSR to be asked to serve on the ARC College, as there are only 16 members for all the social sciences in Australia. My past experience as a reviewer, and as a recipient of grants, has made me appreciate the importance of supporting the robust peer-review processes operated by the ARC.”

The ARC College plays a key role in identifying research excellence, moderating external assessments and recommending fundable proposals. It also assists the ARC in recruiting and assigning assessors and in implementing peer review reforms in established and emerging disciplines as well as interdisciplinary areas.

The ARC College has 83 members across all the disciplines, appointed for a period of three years. There are seven current College members at UQ.

Translational social science researcher another accolade

Professor Brian Head received two accolades for his research leadership and expertise in 2012.

He was elected to the Academy of the Social Sciences in Australia (ASSA) and appointed to the Australian Research Council College (ARC) early this year. *See story on previous page.*

ASSA is Australia's premier institution promoting social science research, and recognises distinguished research careers through electing new members as Fellows.

These Fellows are elected by their peers on the basis of scholarly distinction in their discipline.

Professor Head, an expert in public policy and a former senior public servant, had been elected to the Academy in the discipline of political science.

"Election to the Academy is a great honour. I am especially pleased that my work linking up academia with government and the community has been recognised in this way", he said.

Professor Head is the research leader for the Sustainability and Environment Program and the Policy Analysis Program at the Institute for Social Science Research (ISSR). He was also appointed as an ARC College member in the area Social and Behavioural Sciences earlier this year.

ISSR Director, Professor Mark Western, said Professor Head's achievements raise the profile of Professor Head and the Institute.

"It's a great achievement to be appointed to the ARC College and is a vindication of the strength of Professor Head's research expertise. And becoming a fellow of the prestigious Academy of the Social

Sciences in the same year is a further honour that recognises he is a leader in his field," Professor Western said.

Professor Head is also an expert in the politically-fraught but critical area of translating social science research into public policy. He leads a major project on "Evidence-based policy and research utilisation" that examines the blockages to improving the use of evidence to inform public policy.

His other research areas include program evaluation, social inclusion, service delivery, integrity and accountability, early intervention and prevention, and several projects on water policy and planning.

Research and Innovation Award

ISSR Postdoctoral Research Fellow, Dr Linda Colley, was presented with a Research Award for her outstanding research in public sector employment at a ceremony on September 27, 2012.

The annual Research and Innovation Awards presented by The Faculty of Social and Behavioural Sciences (SBS) and the Institute for Social Science Research (ISSR) recognise those members of staff who have made an outstanding contribution to research and innovation activities.

Professor Bill Martin, ISSR leader of the Employment and Education Program, presented Dr Colley's award and congratulated her on her prodigious output of 11 journal articles published or in press since starting as an academic in 2010.

He also noted the relevance of Linda's historical



Professor Head (centre) and team

research on public employment tenure and workforce planning in light of current events in the Queensland public service.

Dr Linda Colley has made innovative contributions to public employment, which is a perennial problem for governments, never more so than since the onset of the global economic downturn.

Combining policies with data, Dr Colley identified associations between public sector reforms, ageing public workforces and gender, and the transition from a young male to an older female workforce. This supports re-thinking of ageing workforce policies.

Dr Colley's reputation as an expert on public employment has resulted in invitations to provide advice to the Queensland Public Service on matters including workforce planning, Indigenous employment and the employee survey.

Dr Adrian Cherney (School of Social Science) also received a Research Award and Dr Eileen Honan (School of Education) received an Innovation Award.

ARC grant success 2012

ISSR staff won three Australian Research Council (ARC) grants to the value of \$834 000 for projects that start in 2013.

Dr Rebecca Wickes is the recipient of a Discovery Early Career Research Award of \$374,702 for a project entitled, "Crime and change in urban communities: a longitudinal study of violence, community networks and the collective capacity for action".

Institute Director Professor Mark Western, Associate Professor Michele Haynes and Professor Lorraine Mazerolle will be on a cross-university collaborative team on the project entitled "Securing the Data". The project will develop an integrated facility to support a collaborative research centre of government and university partners for research in the fields of health, education, policing, and community services.

The third project team, including Professor Western, will compare the developed and developing societies of Australia, China and the United Kingdom to see how social networks affect well-being in these different contexts. The project is entitled, "Social networks and subjective wellbeing in Australia, China and the United Kingdom".

The projects will be administered by UQ.

Linkage Projects 2012

Two ISSR researchers won 2012 ARC Linkage grants – Professor Brian Head and Dr Maree Petersen.

In congratulating the researchers ISSR Director Professor Western said the projects reflect positively on the collaborative and applied nature of the Institute's research and its individuals.

Linkage Projects are collaborative research partnerships between universities and public or private organisations with a focus on applying cross-disciplinary research outcomes to industry.

The projects are titled, 'Water-energy-carbon linkages in households and cities: a new paradigm' and 'The relationship between rural living and wellness: what services and supports do older people need?'.

"Professor Head will be collaborating with researchers from UQ's School of Chemical Engineering and South East Water in Victoria to identify cost-effective solutions to the rapid increase in urban water energy use, and solutions for the co-management of water, energy and carbon," Professor Western said.

"Dr Maree Petersen (pictured second from right) and collaborators from La Trobe University and University of Alberta will be investigating community services for older people living in rural Australia in partnership with the Victorian Department of Health and Queensland Health," he said.



Social Wellbeing, Health and Housing team



ISSR welcomes German Embassy Counsellor

In November 2012, ISSR held a welcome reception for the German Embassy Counsellor, Mr Thomas Kaulisch, who delivered an address on Germany's migration patterns over the last 60 years.

In opening the reception ISSR Employment and Education Program Leader, Professor Bill Martin, said the event was not only a chance to enrich our understanding of migration patterns in Germany but also to build relationships with a leading nation of the European Union (EU).

ISSR Director Professor Western said the Institute was delighted to host the event. "It's a chance to build relationships between our communities and countries and deepen our knowledge of migration policies in Germany," Professor Western said.

"To hear about policy from an international perspective is tremendously valuable so we are very pleased to welcome Mr Thomas Kaulisch from the German Embassy in Canberra, Honorary Consul Professor Michael Schuetz based in Brisbane and many from the German community," Professor Western said.

"For those of you who don't know about anything about the Institute for Social Science Research, we're a multidisciplinary institute. We have psychologists, statisticians, political scientists and social policy people and a number of people from my home discipline which is sociology," he said.

Germany's Honorary Consul in Brisbane, Professor Michael Schuetz, said he welcomed Mr Kaulisch on behalf of the German community in Queensland.

"When an enduring passion lines up with your professional activities it is a powerful combination. This is the case with Mr Kaulisch – he has a passion and expertise in immigration," Mr Schuetz said.

Before Mr Kaulisch joined the German Embassy as counsellor for labour market, health and social affairs in

Members of UQ German Club with Professor Schuetz. From left, Rachael Webber, Rhiannon Neilsen, Professor Schuetz, Joshua Lovett (president), Samantha Nunn, and Dahra Michael Rez

International collaboration

ISSR researchers are in high demand from overseas universities and public and private sector organisations that seeking expertise for collaboration. See diagram at left for major international activities of 2012 and listed below of key organisations we collaborate with:

- Berghof Foundation for Conflict Studies, Germany
- Catholic North University, Chile
- Institute for Social and Economic Research, Essex University, UK
- George Mason University, US
- McGill University, Canada
- University of Bristol, UK
- Vanuatu Council of Chiefs
- US Department of Homeland Security
- US Department of Justice
- UK National Policing Improvement Agency
- Center for the Study of Poverty and Inequality, Stanford University, USA
- Edinburgh University, Scotland
- Simon Fraser University, Canada
- Lund University, Sweden



Professor Western, Mr Kaulisch, Professor Martin and Professor Schuetz (left to right) at the German Embassy Counsellor's welcome event.



Scan for full list of ISSR 2012 events

2010 he worked with the Federal Chancellery, the Federal Ministry of Health and Social Security and the Federal Ministry of Labour and Social Affairs in Berlin and Bonn.

Mr Kaulisch, in opening his address, said it's a perfect time to talk about migration and Germany's policies on migration and integration. "Germany is really progressing in that area; there have been major policy changes in the last months," he said.

"In the 1950s and 1960s the West German 'Wirtschaftswunder', the so-called economic miracle, happened. Growth figures were high, mostly driven by mining and manufacturing. The economy needed more workers than the German labour market could provide," Mr Kaulisch said.

"In 1960 the percentage of foreign labour was 1.3% and this increased to 12% within 13 years. The resident status of the guest workers and their families, many of whom decided to stay, was consolidated in the late 70s. The main form of arrivals into Germany in the 1970s and 1980s was for family reunions," Mr Kaulisch said.

More so than Australia, Mr Kaulisch noted, Germany has dual challenges of low birth rates (Australia has 1.9 children per woman and Germany has 1.4) and an ageing population. This combination will put pressure on education, pensions, aged care, health care, infrastructure and especially the labour market.

"By 2030 the German workforce will decrease by 6 million people unless we take action. To counter the effects of the declining workforce, Germany is now undertaking many measures such as increasing labour market participation rates, upskilling the unskilled and skills recognition. And increasingly immigration can and should be part of the answer to the demographic challenge. Last year Germany had a net migration gain of 320,000 people. The arrivals to Germany were 57% EU nationals who have the right to live and work in Germany," he said.

Vulnerable families workshop

ISSR hosted the Vulnerable Families in Australia Workshop in 2012 which brought together leading international researchers, government and non-government agencies to review academic research and policy and program agendas to support vulnerable families.

Workshop coordinator Professor Janeen Baxter, an expert in family and life course studies at ISSR and The School of Social Science at The University of Queensland, gave the opening address for the two-day workshop.

Australian Research Council (ARC) Professorial Fellow Janeen Baxter said, "The goal of the workshop was to align research with the needs of policy makers in this area. The workshop reviewed current research in the field, the data available and policies and programs that support vulnerable families".

Three experts in poverty and family studies from the United States gave presentations at the workshop, including, Professors Kathryn Edin (Harvard), Ariel Kalil (Chicago) and Rebekah Levine Coley (Boston).

Leading UQ researchers – Professor Matt Sanders an architect of the Triple P Parenting program and ARC Laureate Professor Lorraine Mazerolle of ISSR and leader of the Vulnerable Communities program of research at ISSR, also addressed the workshop.

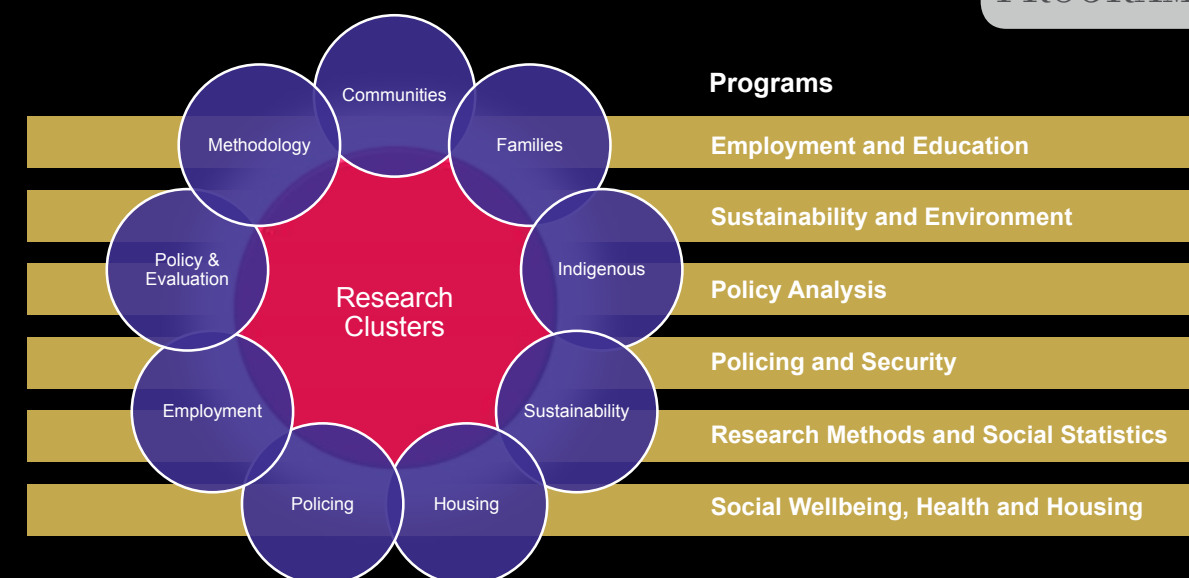
Professor Baxter and colleagues are currently working to develop pilot studies and funding proposals for future projects in the area.



Aboriginal and Environments Research Group (AERC) led by Professor Paul Memmott who contribute much of the research in the Indigenous cluster. And (at left) Policing and Security Program team led by Profesor Lorraine Mazerolle.

PROGRAMS

41
RESEARCH
PROGRAMS



Outline of programs and their leaders

Employment and Education

Professor Bill Martin (PhD in sociology)

This program explores issues relating to work quality, labour markets, human capital and skill needs and manages the national \$2.7 million evaluation of Paid Parental Leave (PPL) arrangements for the Australian Government.

Sustainability and Environment

Professor Brian Head (PhD in political science)

The program examines the social, political and institutional aspects of sustainable development and provides scholarship in public policy and management. It contributes to important national initiatives such as the Cooperative Research Centre for Water-Sensitive Cities.

Policy Analysis

Professor Brian Head (PhD in political science)

Much of the research of ISSR involves policy and program evaluations. This program specialises in research in public policy, governance, decision-making, management and utilisation of research findings and program evaluation. It contributes to important national research networks such as the Centre for Research Excellence in Evidence-Based Mental Health Planning.

Policing and Security

Professor Lorraine Mazerolle (PhD in criminology)

This program examines policing processes that reduce crime and disorder and improve

community wellbeing and resilience. The program is evaluating a youth truanting program, Project ABILITY, which is funded by Professor Mazerolle's Australian Research Council (ARC) Laureate Fellowship. Professor Mazerolle is also Chief Investigator and UQ Node Leader of the ARC Centre of Excellence in Policing and Security (CEPS).

Research Methods and Social Statistics

Associate Professor Michele Haynes (PhD in applied statistics)

The program concentrates expertise in sampling design and procedures, data collection, statistical analysis, statistical modelling and estimation. It is developing dual-frame survey methods for sampling landline and mobile phones and designing new analytics technologies (Leximancer, SiTrack, Discursis and HARVEST).

Social Wellbeing, Health and Housing

Dr Cameron Parsell (PhD in social work)

This program informs policies on health and housing, social wellbeing of groups including older people, people with disabilities, families and children, immigrants, and Australian Indigenous through collaborative research projects such as the current partnership with The Mercy Foundation to research first-time homelessness and housing stress in later life.



Professor Bill Martin's team (top) and Associate Professor Michele Hayne's team (bottom), and A/P Haynes with some of her team (facing page, top right)

KEY 2012 PROGRAM ACTIVITIES

Employment & Education Program

- Work on the Paid Parental Leave (PPL) evaluation continued with these notable achievements in 2012:
 - Publication of the Phase 1 baseline report as a FaHCSIA Occasional Paper (No. 44)
 - Submission of the Phase 2 evaluation report. Phase 2 of the evaluation focused on the implementation of the PPL scheme
 - Most data for Phase 3 of the evaluation was collected. This included two waves of a longitudinal survey of 4,100 mothers eligible for PPL, interviews with mothers, a survey of employers and interviews with employers
 - Baseline results from the evaluation were presented at national and international conferences.
- Through the Employment and Education Program, a team lead by ISSR was contracted to evaluate the Dad and Partner Pay (DAPP) scheme. Work commenced on this evaluation through a literature review and preparation for data collection.
- An ARC Linkage application to extend the PPL longitudinal mothers survey was prepared and submitted, with FaHCSIA as industry partner.
- Work commenced on an NHMRC project on PPL and young mothers and health. In particular:
 - Data collection commenced through qualitative interviews with mothers aged 26 and under who received PPL and/or Baby Bonus;
 - A systematic literature review was commenced on paid maternity leave and infant

and mothers' health.

- Research on the Dutch GAK project commenced, looking at union involvement in unemployment and paid parental leave policy, including a literature review and interviews with policy experts and unionists. The research is being conducted in conjunction with Erasmus University Rotterdam in the Netherlands.
- A pilot study looking at private sector managers who undertake work-related travel was funded through a New Staff Research Grant. The focus of the study is on household strategies for combining work and care, investigated through in-depth interviews with couples living in Brisbane and Melbourne.
- The Program also hosted Summer Scholar Aaron Duff, who worked on the Dutch GAK project doing content analysis, an analysis of trends in collective bargaining in Australia, and interviews.

Sustainability & Environment Program

- Completion of Urban Water Security Research Alliance projects on water recycling, and risk factors in urban water management systems
- Commenced project on risk communication for alternative water sources
- Commenced NCCARF project on adaptation in remote indigenous communities of NW Queensland
- Completed NCCARF project on individual adaptive capacities to engage in more sustainable workplace behaviours



Fragile Families Workshop attendees; ISSR staff and international visitors

- Commenced ARC Linkage on the water-energy nexus in households and cities
- Commenced project on cumulative impacts of CSG development in SW Queensland
- Completed ARC Discovery project on Collaborative Approaches to Natural Resource Management
- Completion of PhD by Rachel McDonald (supervisor Dr Fielding) who obtained a postdoctoral fellowship at UNSW.
- Continuing supervision of two PhDs investigating the psychology of environmental sustainability (Dr Fielding)
- Continuing PhD projects on Water planning in SEQ (Brad Lewis), Climate Change Scepticism (Willem Van Rensburg), Biodiversity planning (Tim Holmes) and river basin management in Java and Brisbane (Candra Samekto).
- Commenced ARC Discovery grant on Climate Change Communication (Dr Fielding)
- Continued ARC Future Fellowship that commenced

in 2011. Her research focuses on the social and behavioural dimensions of environmental sustainability

- Editorial Board membership of Environment and Behavior (Fielding).

Policy Analysis Program

All Programs are actively involved in analysing and evaluating a large range of policy areas including: poverty and social disadvantage; housing and homelessness; health and aged care; Indigenous services; children and families; education and workforce issues; security and justice issues; environmental sustainability issues; and general policy-related issues such as evidence-bases for decision-making and the relationship between research and decision-making.

- The major continuing project for the Policy Analysis Program has been the ARC Linkage project on Evidence-based Policy in Australia. It focuses on the use of academic social research in government agencies, and the perceptions of both academics and policymakers about what types of research information are most valuable. The project website

(<http://www.issr.uq.edu.au/EBP-home>) provides considerable detail about the nine partners and other supporting agencies, and outlines the stages in gathering data from both academic and government sources through surveys, interviews and document analysis. Conference papers reporting the early findings have been presented during 2011.

- Continuing supervision of two PhD students working on the interface between academic research and policymakers and the role of knowledge-brokering activities (Jenny Van Der Arend, Jenny Bell).
- Successful completion of PhD dissertation on school governance (Sally Pitkin).
- Continuing supervision of PhD projects on evolution of 'Smart State' policies (Chris Salisbury), and education reform (Raelene Garvey).
- Convened the panel on evidence-based policy at the annual conference of the International Research Society for Public Management.
- Invited address by Professor Head to the OECD workshop on evidence for sustainable development, Paris, November 2012.
- Provided a commissioned report on "How Government Agencies Use Evidence" for the National Board of Health & Welfare in Stockholm.
- Convened the POLSIS Masters course on Public Policy.

Social Wellbeing, Health & Housing

Data collection and report writing for three projects under the Homelessness Research Agreement with FaHCSIA

- Rough Sleeping Project (Parsell and Jones)
- Older People's Homelessness (Jones and Petersen)
- Service Integration (Phillips and Head).

Data collection and report writing for AHURI

- Bridging the Divide

- Assertive Outreach
- Housing First
- Prevention for Older People's Homelessness
- Concentrations of Disadvantage.

Data collection and report writing for Queensland State Government Evaluations:

- Queensland Street to Home Strategy
- Service Integration Demonstration Project: Townsville-Service Integration Demonstration Project: Brisbane
- Data collection for the ARC Linkage. Breaking the Cycle of Homelessness: An Identity Change Perspective

Policing & Security Program

Australian Community Capacity Study (ACCS)

- The 4th wave of the survey in Brisbane, which focuses on community resilience before and after the 2011 flood disaster, was completed
- The Child Maltreatment and Wellbeing survey module, which was attached to the ACCS Wave 4 survey, was completed
- Dr Rebecca Wickes was awarded an ARC Discovery Early Career Research Award to examine the reciprocal relationships between community structure, networks, norms and actions
- Dr Rebecca Wickes, Dr Suzanna Ramirez and Prof Lorraine Mazerolle presented findings at the Harris School of Public Policy, University Of Chicago
- The team also presented findings at the ARC Centre for Excellence in Policing and Security (CEPS) Annual Conference, Melbourne, the American Society of Criminology (ASC) Annual Meeting, Chicago, and the Australian Sociological Association (TASA) Conference, Brisbane.

Project Ability

- All 102 of the truants required for the project were recruited to the randomised controlled trial of police partnerships with schools to reduce truancy



Dr Sarah Bennett, Assistant Commissioner Peter Martin and Professor Mazerolle, co-authors of the Queensland Community Engagement Trial (QCET).



2012 Ability team (from left): Professor Mazerolle Kelli Byrne, Dr Bennett, Kate Leslie and Emina Prguda

- As of the end of November, 266 surveys have been completed by young people (n=94), responsible adults (n=94) and agency representatives (n=78).

Queensland Community Engagement Trial

- The team worked with partners in South Carolina (US) and Turkey to complete direct replications of the trial, with another underway in Scotland
- Dr Emma Antrobus visited the National Policing Improvement Agency (NPIA) in the UK in September to explore points of comparisons between the QCET experiment and the training experiment conducted by the NPIA.
- Findings were presented at the CEPS Annual Conference, the ASC Annual Meeting, and the Road Safety Research Network, Brisbane, Australia.

National Security and Disaster Preparedness

- Wave 5 of the Living in Queensland (LIQ) project was completed
- Data collection for the National Security and Preparedness Study (NSPS) was completed
- Findings were presented at the CEPS Annual Conference, the ASC Annual Meeting, and TASA Conference.

HARVEST

- Open-source development of HARVEST (dubbed "harvestR") is being undertaken to make it available as a software package for the R statistical computing language
- HARVEST is under patent application through the University of Queensland for the underlying technology and algorithms
- Terrorism and Counterterrorism (CT) Modelling
- Work has continued on specific areas of research including the extension of the Hawkes self-exciting and mutually exciting models to describe the clustering patterns in terrorist activity

- Dr Gentry White presented findings at the Australian Statistical Conference, Adelaide, and at the Bayes on the Beach Conference, Caloundra.

Systematic Reviews

- The systematic review "Legitimacy in Policing" was accepted for publication by the Campbell Collaboration (see <http://campbellcollaboration.org/lib/project/141/>) and findings presented at the ASC Annual Meeting
- The title registration for the systematic review "Legitimacy policing's impact on crime and disorder in communities and places" was submitted to the Campbell Collaboration
- A protocol and policy influence plan was submitted to the International Initiative for Impact Evaluation (3ie) for the systematic review "Policing interventions for interpersonal violent crime in developing countries". The review was also registered with the Campbell Collaboration (see <http://campbellcollaboration.org/lib/project/228/>) and preliminary findings presented at the Campbell Colloquium, Copenhagen, Denmark
- The systematic review Crop targeting's impact as a drug control strategy was registered with the Campbell Collaboration (see <http://campbellcollaboration.org/lib/project/234/>)
- Dr Angela Higginson attended the Dhaka Colloquium on Systematic Reviews in International Development, Bangladesh, in December.

Drug and Alcohol Research

- The modelling of the causal impact of Project STOP on the production, trafficking, and use of amphetamines was completed
- Analysis for the project Random breath testing (RBT): Impact on alcohol-related traffic accidents was completed and showed that Western Australia's 1:3 ratio is inadequate by comparison to Queensland's 1:1 ratio when it comes to modelling the number of alcohol-related crashes across the two states
- Findings on RBT and Project STOP were presented at the Australasian Professional Society on Alcohol and other Drugs Conference, Melbourne,



in November, and on RBT at the CEPS Annual Conference.

Other Activities

- Angela Higginson (Commonwealth fraud) and Elise Sargeant (policing and collective efficacy) successfully completed PhD dissertations
- Supervision continued of PhD projects on policing experiments and organisational learning (Laura Bedford), assessing the processes of prisoner re-entry (Suzanne Brumby), the impact of disaster on the most vulnerable (Martina Baumer), pathways of network formation by Sudanese youth in Brisbane (Melinda Chiment), micro and macro perspectives of alcohol harm (Jason Ferris), exploring incidences of prejudice motivated crime (Kathryn Ham), social control of the transgendered body (Toby Miles-Johnson), sub-graph identification and detection in complex networks (Jenna Thompson), trust in police, confidence in government and reporting of prejudice motivated crimes (Susann Wiedlitzka), and crime and disorder in the post-disaster neighbourhood (Renee Zahnow)
- Prof Mazerolle was an invited presenter in February for the Webinar on International Best Policing Practices, sponsored by the U.S. Department of Justice Bureau of Justice Assistance

- Prof Mazerolle was invited speaker in June on the power of policing partnerships at Regulatory Institutions Network (RegNet), ANU, Canberra, and Transforming the Future Lecture Series, RMIT, Melbourne, and Chair for the session on Experimental Criminology at the ASC Annual Meeting.

Research Methods and Social Statistics

- The ReMASS program, incorporating the Life Course and Longitudinal Studies program of research (joint with School of Social Science), continues to grow with the addition of research fellows, Dr Bernard Baffour and Dr Paco Perales, senior coordinator for survey research Sue York, senior CATI supervisor Joseph Byrne and international PhD scholar Arturo Martinez.
- Michele Haynes presented a paper on optimal weights for dual-frame telephone surveys at the international RC33 Social Science Methodology conference in Sydney, July 2012.
- Michele Haynes, Mark Western and Bernard Baffour were awarded seed funding to establish industry engagement on a research project to develop sampling and estimation methodologies



for dual frame telephone surveys in the Australian context.

- Michele Haynes and Melanie Spallek continued research on an ESRC funded Housing Transitions and Fertility project in collaboration with researchers from the University of Bristol and Oxford. This research considers the extent to which couples move in anticipation of and following childbearing. Michele Haynes and Janeen Baxter presented papers at the conference for the Society of Longitudinal and Life Course Studies in Paris, October 2012.
- Dr Andrew Smith commenced Situation Tracking research sponsored by the U.S. Air Force Research Laboratory. The research aims to develop a practical system analyzing complex large data streams including social media, event logs and transaction data.
- Work continued on the evaluation of the Respectful Relationships program delivered to schools and other organisations for the Department of Families, Housing, Community Services and Indigenous Affairs. Data collection for the Round 1 and 2 process evaluation was completed.
- A review of gender training for AusAID was

completed. This contract research included a review of processes and literature as well as the conduct of analyses of a staff-wide survey, focus groups and interviews with senior executive AusAID staff in Australia and overseas.

- Commenced work on the research project assessing the Impact of School Design and Infrastructure on Educational Outcomes funded by the Queensland Centre for Social Science Innovation. This project examines the impact of recent initiatives in Queensland such as the State Schools of Tomorrow program on student learning outcomes, better teaching and learning practices and staff morale.
- A research project, funded by an NDLERF grant, on the multiplier effect of profits derived from drug trafficking was completed..
- Dr Melanie Spallek continued with research work on advanced housing, family and methodological research funded by a UQ AHURI PhD scholarship.

ABOVE: Dr Angela Higginson, at far right, pictured with her supervisors after she received her PhD. From left: Dr Rebecca Wickes, Professor Mark Western and Associate Professor Michele Haynes. LEFT: 2012 Australian Data Archive meeting at ISSR.

Executive

Professor Mark Western

Paul Boreham
Assoc Professor Michele Haynes
Professor Brian Head
Ms Cordelia Jackson
Professor Andrew Jones
Dr Cameron Parsell
Professor Bill Martin
Professor Lorraine Mazerolle
Ms Sue McKell
Professor Paul Memmott

Director

Emeritus Professor
Program Leader, Research Methodology and Social Statistics
Program Leader, Sustainability and Environment, and Policy Analysis
Deputy Director (Operations)
Program Leader, Social Wellbeing, Health and Housing
Acting Program Leader, Social Wellbeing, Health and Housing
Program Leader, Employment and Education
Program Leader, Policing and Security
Manager, Innovation and Commercial Development
Director, Aboriginal Environments Research Centre (AERC)

Research Staff

Dr Emma Antrobus
Professor Janeen Baxter
Ms Laura Bedford
Dr Sarah Bennett
Ms Kelli Byrne
Ms Rebecca Coates
Ms Laetitia Coles
Dr Linda Colley
Ms Bronwyn Crook
Ms Caroline Crothers
Ms Jacqueline Davis
Dr Kristen Davis
Ms Elizabeth Eggins
Ms Michele Ferguson
Dr Jason Ferris
Dr Kelly Fielding
Mr Nominos Glinatsis
Dr Belinda Hewitt
Dr Angela Higginson
Dr Victor Igreja
Dr Amity James
Ms Kate Leslie
Dr Mark Lynch
Dr Silke Meyer
Miss Leith Morris
Mr Martin O'Flaherty
Dr Francisco Perales Perez
Dr Maree Petersen
Ms Rhonda Phillips
Dr Jenny Povey
Miss Emina Prguda
Dr Suzanna Ramirez
Ms Emily Rose
Ms Judith Rose
Mr Andrew Ross
Ms Nicola Seage

Research Fellow
Australian Professorial Fellow
Research Officer
Research Fellow
Family Group Conference Facilitator
Research Assistant
Research Assistant
UQ Postdoctoral Research Fellow
Senior CATI Lab Supervisor
Research Assistant
Research Assistant
Postdoctoral Research Fellow
Research Officer
Research Officer
Senior Research Fellow
ARC Future Fellow
Senior CATI Lab Supervisor
Senior Research Fellow
Research Fellow
Postdoctoral Research Fellow
Research Fellow
Conference Associate Convener
Director, Queensland Centre for Social Science Innovation
Research Fellow
Research Officer
Senior Research Assistant
Research Fellow
Postdoctoral Research Fellow
Postdoctoral Research Fellow
Senior Research Assistant
Research Assistant
Research Fellow
Research Fellow
Research Assistant
Commercial Operations Manager
Research Officer

Ms Elizabeth Shaw
Dr Andrew Smith
Ms Adele Somerville
Ms Melanie Spallek
Dr Tsui-o Tai
Ms Jenna Thompson
Dr Wojciech Tomaszewski
Dr Gentry White
Dr Rebecca Wickes
Mr Matthew Wyatt
Mrs Ning Xiang
Dr Mara Yerkes
Ms Susan York
A/Prof Maria Zadoroznyj
Miss Renee Zahnow
Dr Bette Zhang

Research Officer
Research Fellow
Research Assistant
Research Assistant
UQ Postdoctoral Research Fellow
Research Assistant
UQ Postdoctoral Research Fellow
Research Fellow
Research Fellow
Survey Analyst Programmer
Research Assistant
Senior Research Fellow
Senior Project Coordinator
Associate Professor
Research Assistant
Research Assistant

Operations Staff

Ms Anna Bartos
Miss Angela Chau
Ms Erica Davis
Ms Emma Earl
Ms Sarah Flett
Ms Cara Herington
Ms Cassandra Hughes
Mrs Louise Keith
Miss Sally Lowe
Ms Linda Morris
Ms Honor Morton
Ms Belinda Phelps
Ms Adrienne Pryor
Mr Gavin Purtell
Ms Jadwiga Szablewska
Ms Margaret Tighe
Ms Shannon Tyrrell
Mr Justin Uilderks

Personal Assistant
Project Officer (Research Administration)
Senior Legal Counsel, Research
Research Development Officer
Personal Assistant
Office Manager
Executive Assistant/Events Manager
Finance Manager
Human Resources Officer
Senior Finance Officer
Marketing and Communications Officer
Administration Officer
Acting Deputy Director (Operations)
Contracts Administrator
Finance Officer
Senior Finance Officer
Administration Officer
Human Resources Officer

Ms Vikki Uhlmann

Adjunct Associate Professor

Conjoint Appointment

Professor Justin Kenardy
Mr Jason Saunders

Affiliate Professor
Conjoint Police Fellow - Inspector

Adjunct Appointments

Dr Garth Britton
Ms Amanda Hosking
Dr Roderick McCrea
Professor Michael McFadden
Maurie McNarn, AO
Mr Greg Oliver
Mr Darren Pennay

Adjunct Senior Research Fellow
Adjunct Research Fellow
Adjunct Research Fellow
Adjunct Professor
Adjunct Professor
Adjunct Senior Research Fellow
Adjunct Professor

Honorary Appointments

Ms Jenny Bellamy
Professor Jan Carter
Dr Sin Y Cheung
Professor Fiona Devine OBE
Venerable Master Chin Kung
Professor Gabriel Moens
Dr Greg Picker
Dr Aileen Toohey

Honorary Research Consultant
Honorary Professor
Honorary Senior Lecturer
Honorary Professor
Honorary Professor
Honorary Professor
Honorary Research Consultant
Honorary Research Fellow

Research and higher degree candidates

The table below lists students supervised by ISSR staff in 2011. The right-hand column shows the school the students are enrolled in as ISSR does not directly enroll RHD students. The principle supervisor is indicated in bold.

| Name | Name | Name | Name |
|----------------------|---|--|---|
| Barnes, Rodger | Memmott, Paul Brereton, David | Implementation and outcomes of the Granites mining agreement with Aboriginal people. | Architecture |
| Baumer, Martina | Cheshire, Lynda Walters, Peter Wickes, Rebecca | The impact of disaster on the most vulnerable: Stress, resistance and resilience amongst people from cultural and linguistic diverse background post Queensland floods, Australia. | Social Science |
| Bedford, Laura | Mazerolle, Lorraine Bennett, Sarah | Experiments, evidence and organisational learning: A case study of the Queensland Police Service organisational response to innovative evidence based practice. | Social Science |
| Bell, Jennifer | Head, Brian Boreham, Paul Cherney, Adrian | Knowledge brokering: bridging the gap between academia and policy making in Australia? | Political Science & International Studies |
| Bissing-Olson, Megan | Fielding, Kelly Iyer, Aarti | Relationships between environmental attitudes, values, and your behaviour. | Psychology |
| Brink, Katrina | Hewitt, Belinda Skrbis, Zlatko | Positive youth settings, supportive relationships and trust: what factors support youth attainment of year 12 Queensland youth? | Social Science |
| Brumby, Suzanne | Fitzgerald, Robin Wickes, Rebecca | Assessing the processes of prisoner re-entry following incarceration and the relationship between community-level social processes and recidivism. | Social Science |
| Buchler, Sandra | Baxter, Janeen Haynes, Michele Western, Mark | Cohabitation in Australia: Characteristics, Transitions and Outcomes. | Social Science |
| Catalano, Grazia | Jones, Andrew Bland, Robert | Service delivery approaches for young adults with mild intellectual impairment who have complex treatment and support. | Social Work & Human Services |
| Chan, Chung Kai | Kelly, Adrian Haynes, Michele Young, Rossf | Dynamic social systems and adolescent substance abuse: A new cusp catastrophe model. | Medicine |
| Chiment, Melinda | Skrbis, Zlatko Wickes, Rebecca | Pathways of Networks Formation: Experiences of Sudanese Youth in Brisbane. | Social Science |
| Coates, Rebecca | Skrbis, Zlatko Western, Mark | Future Aspirations and Expectations: A study of the intergenerational mobility of young second generation Australians in Queensland. | Social Science |
| Connolly, Malcolm | Memmott, Paul Lilley, Ian Schmidt, Susanne | Understanding the Need for Establishing Core Refuges in Spinifex Grasslands for the Production of Resin by Aboriginal Communities in North-West Queensland. | Architecture |
| Cooke, Anna | Fielding, Kelly Louis, Winnifred | Supporting climate change relevant pro-environmental behaviour with the theory of planned behaviour. | Psychology |

| Name | Name | Name | Name |
|---------------------------------|---|---|---|
| Creagh, Susan | Lingard, Robert Western, Mark | What is the relationship between second language acquisition, as measured using the ESL bandscales, and performance on the NAPLaN tests? | Education |
| Curth, Jodie | Bellamy, Alexander Boreham, Paul | The AFP and Capacity Building: Locating the goal posts in a foreign policy space. | Political Science & International Studies |
| Dalley, Cameo | Memmott, Paul Lilley, Ian Trigger, David Ulm, Sean | Social relations and layered identities in a remote Aboriginal town, Mornington Island, southern Gulf of Carpentaria, Australia. | Architecture |
| Eggins, Narelle | McMahon, Mary Haynes, Michele | Lifelong career pathway implications of initial occupational choices: the relationship between age and successful career directional change. | Education |
| Ferris, Jason | Mazerolle, Lorraine Haynes, Michele McKenzie, Samantha | A technical exploration of the mirco and macro view of alcohol's harm: exploring the harms per litre of alcohol on the individual and the impact of alcohol on the community. | Population Health |
| Fouistone, Alexis | Kelly, Adrian Baxter, Janeen | Couple relationships and alcohol involvement during early adulthood: A longitudinal population-based study. | Social Science |
| Garvey, Raelene | Goos, Marilyn Head, Brian Scott, Roger | The Education and Training Reforms for the Future, 1996-2006: Policy ideas, Networks and Interventions. | Education |
| Ghafourian Gomshi Bashi, Ameneh | Healy, Karen Harrison, Gai Haynes, Michele | Transition of out of home to independent living: building an evidence base of policy and practice. | Social Work & Human Services |
| Godwin, Jenine | Memmott, Paul Jones, Andrew | Livin+ the DJ Way: Aboriginal housing and health in Dajarra. | Architecture |
| Greenop, Kelly | Memmott, Paul Babidge, Sally | `It gets under your skin+: Place meaning, attachment, identity and sovereignty in the urban Indigenous community of Inala, Queensland. | Architecture |
| Ham, Kathryn | Wickes, Rebecca Higginson, Angela Pickering, Sharon | Exploring incidences of prejudice motivated crime in two Australian cities. | Social Science |
| Hauser, Vivian | Memmott, Paul | Indigenous community-based sustainable housing initiatives: lessons from North American practices. | Architecture |

| Name | Name | Name | Name |
|----------------------------|---|--|---|
| Higginson, Angela | Haynes, Michele McFadden, Michael Western, Mark Wickes, Rebecca | Fraud against the Commonwealth: An analysis of serious and complex economic fraud investigated by the Australian Federal Police. | Social Science |
| Holmes, Timothy | Possingham, Hugh Garnett, Stephen Head, Brian | Understanding how institutional constraints affect Australian threatened bird conservation. | Biological Sciences |
| Hook, Scott | Boreham, Paul Bell, Stephen | The Role of Institutions in Economic Development: An Empirical Analysis of State Capacity and Economic Development in a Small Island State in the Pacific. | Political Science & International Studies |
| Hooper, Megan | Fielding, Kelly Jetten, Jolanda | Organisational factors related to volunteerism. | Psychology |
| Hunt, Charles | Bellamy, Alexander Boreham, Paul Orchard, Philip | Policing Transformation, Transforming Police: Monitoring and Evaluating the Impact of Police in UN Peace Operations. | Political Science & International Studies |
| Ilaiu Talei, Charmaine | Memmott, Paul O'Rourke, Timothy | Coconut Construction: Tongan and Fijian Architecture. | Architecture |
| Janse Van Rensburg, Willem | Head, Brian Ward, Ian | Climate change sceptics in New Zealand: institutional capacities, overseas linkages and political relevance. | Political Science & International Studies |
| Karmaker, Mithila | Harrison, Gai Griffiths, Judith Parsell, Cameron | Immigrants in the private rental market of Australia: Pathways, barriers and experiences. | Social Work & Human Services |
| Kay, Mark | Boreham, Paul Haynes, Michele | Information and Corporate Social Responsibility: The Influence of Corporate Social Activity on Consumer and Investor Choice and its Implications for the Regulatory Role of the State. | Political Science & International Studies |
| Leslie, Kate | Mazerolle, Lorraine Antrobus, Emma Bennett, Sarah | Family compliance in police efforts to reduce truancy: exploring the effectiveness of negotiated case plans. | Political Science & International Studies |
| Lewis, Bradley | Head, Brian Bell, Stephen | Cooperation and competition in water resource management: governance, stakeholder engagement and policy development in SE Queensland. | Political Science & International Studies |
| Mardle, Bryan | Boreham, Paul Brereton, David | An innovation system for Australia's minerals and mining sector: What works and what doesn't in the context of Australia's current public policy framework? | Political Science & International Studies |
| Martinez, Arturo Jr | Western, Mark Haynes, Michele Tomaszewski, Wojtek | Exploring patterns of social mobility in Asia. | Social Science |
| McNeil, Maelisa | Baxter, Janeen Hewitt, Belinda | The relationship between marriage, relationship transitions, and health and well-being. | Social Science |

| Name | Name | Name | Name |
|-------------------------------|---|--|---|
| Miles-Johnson, Toby | Mazerolle, Lorraine Cherney, Adrian | Policing gender diversity: perceptions of intergroup difference between police and transgender people. | Social Science |
| Morris, Megan | Halford, William Hewitt, Belinda | Enhanced mediation creating better outcomes for separated families. | Psychology |
| Nanthanavone, Thong-deuane | Parsell, Cameron Owen, John Westoby, Peter | Exploring local leadership in Lao-based INGOs. | Social Work & Human Services |
| Omara, April | Halford, William Aldridge, Samantha Hewitt, Belinda | Integrating psychoeducational skills training to enhance the family dispute resolution process. | Psychology |
| O'Rourke, Timothy | Memmott, Paul Bamford, Gregory Nash, Daphne | The well-crafted mija: Traditional Aboriginal building skills and knowledge in the Australian Wet Tropics. | Architecture |
| Peach, Linda | Lee, Christina Baxter, Janeen | Factors associated with young Australians' work and family choices. | Psychology |
| Pitkin, Sally | Lingard, Robert Head, Brian | The Complexities and Tensions of School Governance: A Case Study of the Governing Body of an Independent School. | Education |
| Rijnbout, Jasmine | McKimmie, Blake Fielding, Kelly | How to Tell the Emperor He's Naked: Promoting the Positive Consequences and Preventing the Negative Consequences of Deviance in Group Decision-Making to Improve Decision Outcome and Group Functioning. | Psychology |
| Rose, Judith | Baxter, Janeen Hewitt, Belinda Keogh, Jayne | A socio-linguistic study of work-life balance issues for working mothers of school-aged children. | Social Science |
| Rosendahl, Daniel | Memmott, Paul Ulm, Sean Lilley, Ian Wallis, Lynley | The Way it Changes Like the Shoreline and the Sea: The Archaeology of the Sandalwood River, Mornington Island, Southeast Gulf of Carpentaria, Australia. | Architecture |
| Salisbury, Christopher | Spearritt, Peter Head, Brian | Smart State: creating a knowledge economy in Queensland. | History, Philosophy, Religion, & Classics |
| Samekto, Candra Rah-madiyanto | Ross, Angela Abal, Eva Head, Brian | Water sensitive development. | Agriculture Food Sciences |
| Sargeant, Elise | Mazerolle, Lorraine Cherney, Adrian Wickes, Rebecca | Policing and collective efficacy: The way police effectiveness, legitimacy and police strategies explain variations in collective efficacy. | Social Science |

| Name | Name | Name | Name |
|----------------------|---|---|---|
| Shepherd, Nicole | Zadoroznyj, Maria Martin, William Short, Patricia | Sociology of occupations in mental health care. | Social Science |
| Smith, Jonathan | Skrbis, Zlatko Hewitt, Belinda Western, Mark | Youth internet engagement and inequality in Australian society. | Social Science |
| Spallek, Melanie | Haynes, Michele Jones, Andrew Zadoroznyj, Maria | Inter-relationships between housing transitions, fertility and levels of well-being. | Social Science |
| Sutton, Mary-Jean | Babidge, Sally Memmott, Paul Ulm, Sean | A comparative study of conservation values for existing built environments and material culture within former missions and reserves in Queensland. | Social Science |
| Terrill, Janice | Parker, Polly Baxter, Janeen | An investigation into the role of Mentoring and Peer Coaching in the Career Decisions made by Female Technical professionals in the Australian Mining Industry. | Business |
| Thompson, Jenna | Burton, Benjamin Mazerolle, Lorraine White, Gentry | Subgraph identification and detection in complex networks. | Mathematics & Physics |
| Umam, Ahmad Khoirul | Whitehouse, Gillian Head, Brian Khan, Mohammed | Politics of anti-corruption in the Indonesian post-Soeharto administration. | Political Science & International Studies |
| van der Arend, Jenny | Head, Brian Boreham, Paul Cherney, Adrian | Policy-maker perspectives on the use of externally produced social science research to inform policy development and program review - the factors that support its effective utilisation. | Political Science & International Studies |
| Van Kasteren, Yasmin | Fielding, Kelly McKenna, Bernard | Why are some people more environmentally sustainable than others? An exploration of how values and identity motivate sustainable behaviour. | Business |
| Wheller, Sharon | Boreham, Paul Haynes, Michele | Socio-spatial impacts on labour market transitions and trajectories: A study of employment disadvantage in Australia. | Political Science & International Studies |
| Wiedlitzka, Susann | Mazerolle, Lorraine Ramirez, Suzanna | In times of crime and prejudice - Trust in police and confidence in government. | Social Science |
| Xian, Lisa | Schmidt, Susanne Drecker, Fernanda Memmott, Paul | Ecophysiology of spinifex grasses. | Agriculture Food Sciences |
| Zahnow, Renee | Wickes, Rebecca Corcoran, Jonathan Haynes, Michele | Crime in Chaotic Times: Crime and Disorder in the Post-Disaster Neighbourhood. | Social Science |

| Research Project Titles | Chief Investigators | Scheme | Duration | Amount |
|--|---|---|-----------|-------------|
| Dynamic social systems and adolescent alcohol/tobacco use: A new cusp catastrophe model | Adrian Kelly (CySAR), Michele Haynes (ISSR), Ross young (IHBI, QUT) | ARC Discovery | 2010-2012 | \$150,000 |
| National Homelessness Research Partnership Agreement | Andrew Jones (ISSR), | FaHCSIA | 2010-2013 | \$1,333,000 |
| Evaluation of Homelessness Service, Integration Demonstration projects | Andrew Jones (ISSR) | Queensland Department of Communities | 2011-2013 | \$136,684 |
| Paid Parental Leave Scheme Evaluation | Bill Martin (ISSR) | FaHCSIA | 2010-2014 | \$2,720,000 |
| The Utilisation of Social Science Research in Policy Development and Program Review | Brian Head (ISSR), Adrian | ARC Linkage Project | 2010-2013 | \$677,000 |
| Systematic Social Analysis (SEQ Urban Water Security Research Alliance) | Brian Head (ISSR) Kelly, Fielding (ISSR) | Commonwealth Scientific and Industrial Research Organisation Trust | 2007-2012 | \$418,374 |
| Enhancing Institutional Capabilities (SEQ Urban Water Security Research Alliance) | Brian Head (ISSR) Stephen Bell (POLSIIS) | Commonwealth Scientific and Industrial Research Organisation | 2007-2012 | \$350,624 |
| Studies in Homelessness | Cameron Parsell (ISSR) | AHURI Postdoctoral Research Fellowship | 2010-2013 | \$135,465 |
| Interrelationships between Housing Transitions and Fertility in Britain and Australia | Michele Haynes (ISSR) | Economic and Social Research Council (UK) | 2010-2013 | \$9,897 |
| For better or for worse? Understanding the revolution in married life in Australia | Janeen Baxter (ISSR/SocSc), Belinda Hewitt (ISSR) | ARC Discovery | 2009-2013 | \$560,000 |
| Public responses to alternative water supplies: The role of risk, beliefs, | Kelly Fielding (ISSR) | ARC Future Fellowships | 2011-2015 | \$567,380 |
| What are the impacts of interventions to reduce violence crime in developing countries | Lorraine Mazerolle (ISSR) | AusAID/ADRA/3ie | 2011-2012 | \$73,110 |
| The Drug Policy Modelling Program (Colonial Foundation Trust grant administered by The University of New South Wales) | Lorraine Mazerolle (ISSR) | University of New South Wales | 2009-2012 | \$122,000 |
| Multi-Site Trials of Third Party Policing: Building the Scientific Capacity for Experimental Criminology and Evidence-Based social Policy in Australia | Lorraine Mazerolle (ISSR) | ARC Australian Laureate Fellowships | 2010-2015 | \$2,601,856 |
| Vulnerable Communities | Lorraine Mazerolle (ISSR) | ARC Centre of Excellence in Policing and Security | 2009-2012 | \$520,803 |
| National Survey | Lorraine Mazerolle (ISSR) | ARC Centre of Excellence in Policing and Security | 2009-2012 | \$800,000 |
| The Queensland Community Engagement Trial | Lorraine Mazerolle (ISSR) | ARC Centre of Excellence in Policing and Security | 2008-2012 | \$517,032 |
| Department of Communities – Service Agreement | Andrew Jones (ISSR) | Office for Seniors, Queensland Department of Communities (QDOC) | 2010-2012 | \$193,047 |
| Collaborative Research Network Southern Cross University: | Mark Western (ISSR), Brian Head (ISSR) | Collaborative Research Networks (DIISR) & Southern Cross University | 2011-2014 | \$532,510 |

| Research Project Titles | Chief Investigators | Scheme | Duration | Amount |
|--|---|--|-------------|-----------|
| Social Analysis Skills Bridge | Michele Haynes (ISSR) | UniQuest | 2011-2012 | \$47,043 |
| Establishment of the Australian data archive: an integrated research facility for the social sciences and humanities (LE110100049) | Michele Haynes (ISSR), | ARC LIEF | 2011-2012 | \$110,000 |
| Respectful Relationships Program Evaluation | Michele Haynes (ISSR), Silke Meyer (ISSR), Lorraine Maze-rolle (ISSR) | FaHCSIA | 2011-2014 | \$666,345 |
| Targeting the profits of illicit drug trafficking through Proceeds of Crime action | Paul Boreham (ISSR), Michele Haynes (ISSR), Michael Mc-Fadden (UQ), | National Drug Law Enforcement Research Fund (NDLERF) | 2011-2012 | \$164,970 |
| Targeted Crime: Policing and Social Inclusion | Rebecca Wickes (ISSR) | ARC Linkage Project | 2011-2014 | \$115,900 |
| Collective Agreements and So- cial Security Policy: International Com- parison on the Role of Collec- tive Agreements and Social Security Policy | Mara yerkes (ISSR) | ISSR | 2011-2013 | \$69,439 |
| Addressing Concentrations of Social Disadvantage | Andrew Jones | AHURI Multi year Research Project | 2011 – 2014 | \$105,041 |
| Additional PPL Phase 2 Parents Survey | Bill Martin | FaHSCIA Research Project | 2012-2013 | \$62,223 |
| Dad and Partner Pay | Bill Martin | FaHSCIA Research Project | 2012-2014 | \$501,273 |
| Geographical Flexibility in Australia | Mara Yerkes | UQNSRSU Research Project | 2012 | \$12,000 |
| VET Knowledge Infrastructure in Australia | Mara Yerkes | ECBO Research Project | 2012-2013 | \$5,437 |
| IMYRP: Aboriginal Housing Outcomes | Mark Moran | AHURI Research Project | 2012-2016 | |
| Brisbane Common Ground | Cameron Parsell | UQ FL Research Project | 2011-2013 | \$4,500 |
| Evaluation of the Street to Home Initiative | Andrew Jones | QDOC Research Project | 2011-2013 | \$215,351 |
| Exploring offender's compliance with domestic violence orders | Silke Meyer | UQNSRSF | 2011-2014 | \$11,750 |
| Older women at risk of home- lessness in Brisbane | Maree Petersen | UQNSRSUF, Research Project | 2011-2012 | \$11,842 |
| Pathways out of homelessness for rough sleepers | Cameron Parsell | FaHSCIA, Research Project | 2010-2013 | \$247,867 |
| Preventing 1st Time Homeless- ness | Maree Petersen | AHURI, Research Project | 2012-2013 | \$88,905 |
| Retirement villages and later life transitions | Maree Petersen | UQCIEF, Research Project | 2012-2014 | \$21,553 |
| Building Police Partnerships | Emma Antrobus | NSRSF, Research Project | 2012-2013 | \$11,969 |
| Child Maltreatment | Suzanna Ramirez | NSRG, Research Project | 2012-2013 | \$11,936 |

| Research Project Titles | Chief Investigators | Scheme | Duration | Amount |
|--|---------------------|---------------------------|-----------|-----------|
| Harvest Validation | Louise Keith | Uniquet Commercialisation | 2012-2013 | \$29,650 |
| Non-Linear dynamic models | Gentry White | UQ ECR, Research Project | 2012 | \$17,500 |
| Project STOP NSRSF | Jason Ferris | NSRSF, Research Project | 2012 | \$11,949 |
| Violent crime in Developing countries | Lorraine Mazerolle | 3ie, Research Project | 2011-2013 | \$100,602 |
| Behaviour change for water sensitive cities (A2.2) | Kelly Fielding | CRC, Research Project | 2012-2016 | \$73,500 |
| CCSG Cumulative Socioeco- nomic Impacts | Brian Head | CCSG, Research Project | 2012-2015 | \$300,000 |
| Recycled Water Risk Communi- cation | Brian Head | AWR, Research Project | 2011-2014 | \$35,580 |
| Regulatory Frameworks for Water Sensitive Cities | Brian Head | CRCWSC, Research Project | 2012-2016 | \$12,750 |
| Seqwater Firstlink | Kelly Fielding | UQ Firstlink | 2012-2014 | \$4,000 |
| Better Governance for Complex Decision Making | Brian Head | CRCWSC | 2012-2016 | \$430,450 |
| Government Agencies use of Evidence | Brian Head | UK-NBHW | 2012-2013 | \$18,000 |
| Child and Elderly Poverty | Tsui-O Tai | UQ ECR | 2013 | \$7,000 |
| FaHSCIA Longitudinal Analysis Training | Michele Haynes | FaHSCIA | 2012-2013 | \$77,716 |
| School Design and Educational Outcomes | Mark Western | QCSSI | 2012-2013 | \$100,000 |
| Situation Tracking | Andrew Smith | AOARD | 2012-2015 | \$183,353 |
| LSIC Technical Paper | Belinda Hewitt | FaHSCIA | 2012 | \$17,985 |

| Data Collection Project Titles | Clients |
|---|--|
| Genetics of schizophrenia control recruitment pilot | UQ, Queensland Brain Institute |
| Innovative Commercialisation | UQ, Business, Economics & Law |
| Conrod LSO (Longitudinal Study of Trauma) | UQ , CONROD Centre |
| Victorian Gambling Longitudinal Survey Wave 4 2011-2012 | Schottler Consulting |
| Work and Career in Australian Universities (University Work- force Survey/Gender Equity Survey) | POLSIIS, UQ |
| Minor Injuries Study - CONROD | UQ , CONROD Centre |
| The beliefs and experiences of language students in their early years of transition to university-level study | UQ, School of Languages and Comparative Cul- tural Studies |
| Prevalence of Wills survey | UQ, School of Social Work & Human Services |
| LEAD Social Marketing Campaign Survey | UQ, Social Research Centre |
| Rangeland Management Survey | Rangelands Australia |

Book Chapter

Bastian, B. (2012) Immigration, multiculturalism and the changing face of Australia. In Diane Bretherton, Nikola Balvin (Eds.), *Peace psychology in Australia* (pp. 55-70). New York, United States: Springer.

Boege, V. (2012) Hybrid forms of peace and order on a South Sea Island: experiences from Bougainville (Papua New Guinea). In Oliver P. Richmond, Audra Mitchell (Eds.), *Hybrid forms of peace: from everyday agency to post-liberalism* (pp. 88-106). Basingstoke, Hampshire, England: Palgrave Macmillan.

Boege, V. & Franks, D. (2012) Reopening and developing mines in post-conflict settings : The challenge of company-community relations. In Päivi Lujala, Siri Aas Rustad (Eds.), *High-value natural resources and post-conflict peace-building* (pp. 87-120). London, U.K.: Earthscan.

Brown, A. & Gusmao, A. (2012) Looking for the owner of the house - Who is making peace in rural East Timor. In Oliver P. Richmond, Audra Mitchell (Eds.), *Hybrid forms of peace: From everyday agency to post-liberalism* (pp. 107-130). Basingstoke, Hampshire, England: Palgrave Macmillan.

Brown, M. (2012) Trajectories of State transformation - Political community in East Timor. In Claske Dijkema, Karine Gatelier, Ivan Samson, Josiane Tercinet (Eds.), *Rethinking the foundation of the State, an analysis of post-crisis situations* (pp. 87-104). Brussels, Belgium: Bruylant.

Corcoran, J., Stimson, R., Chhetri, P., Rohde, D. & Higginson, A. (2012) Urban growth in the Brisbane-South East Queensland region and its implications for emergency services provision: a geographical information systems-based approach. In Robert Stimson, Kingsley E. Haynes (Eds.), *Studies in applied geography and spatial analysis: addressing real world issues* (pp. 123-143). Cheltenham, United Kingdom: Edward Elgar.

Crutchfield, R. & Ramirez, S. (2012) Using census data and surveys to study labor markets and crime. In David Gadd, Susanne Karstedt, Steven F. Messner (Eds.), *The SAGE handbook of criminological research methods* (pp. 143-158). London, United Kingdom: Sage.

Haslam, N., Bastian, B., Laham, S. & Loughnan, S. (2012) Humanness, dehumanization, and moral psychology. In Mario Mikulincer, Phillip R. Shaver (Eds.), *The social psychology of morality: Exploring the causes of good and evil* (pp. 203-218). Washington, DC, United States: American Psychological Association.

Igreja, V. (2012) Negotiating order in postwar Mozambique: the role of community courts in redressing unsettled war-time conflicts. In Helene Maria Kyed, João Paulo Borges Coelho, Amelia Neves de Souto, Sara Araújo Araújo (Eds.), *The dynamics of legal pluralism in Mozambique* (pp. 148-166). Maputo, Mozambique: Centro de Estudos Soudais Aquino de Bragan.

Lingard, B., Forbes, J., Weiner, G. & Horne, J. (2012) Multiple capitals and Scottish independent schools: The (re) production of advantage. In Julie Allan, Ralph Catts (Eds.), *Social capital, children and young people: Implications for practice, policy and research* (pp. 181-198). Bristol, U. K.: The Policy Press.

Lingard, B., Hardy, I. & Heimans, S. (2012) Deparochializing educational research: three critical, illustrative narratives. In Tara Fenwick, Lesley Farrell (Eds.), *Knowledge mobilization and educational research: politics, languages and responsibilities* (pp. 211-236). New York, United States: Routledge.

Lingard, B., Vass, G. & Mackinlay, E. (2012) Remaining lines of flight in schooling for Indigenous students in Australia. In Jennifer Lavia, Sechaba Mahlomaholo (Eds.), *Culture, education, and community: expressions of the postcolonial imagination* (pp. 125-146). New York, NY, United States: Palgrave Macmillan.

Memmott, P. (2012) On Generating Culturally Sustainable Enterprises and Demand-Responsive Services in Remote Aboriginal Settings: A case study from north-west Queensland. In Natasha Fijn, Ian Keen, Christopher Lloyd, Michael Pickering (Eds.), *Indigenous participation in Australian economies II : Historical engagements and current enterprises* (pp. 243-260). Canberra A.C.T., Australia: ANU E Press.

Memmott, P. & Chambers, C. (2012) Homeless people: Indigenous/Aboriginal. In Lorna Fox O'Mahony, Suzanne Fitzpatrick, Robyn Dowling, Susan J. Smith (Eds.), *International encyclopedia of housing and home* (pp. 97-103). Amsterdam, Netherlands: Elsevier.

Miletic, T. (2012) A peace-building paradigm for peace psychology. In Diane Bretherton, Nikola Balvin (Eds.), *Peace psychology in Australia* (pp. 305-318). New York, United States: Springer.

Northam, C. & Miller, D. (2012) Queensland speaks: women talking about leadership. In Rosemary Francis, Patricia Grimshaw, Ann Standish (Eds.), *Seizing the initiative: Australian women leaders in politics, workplaces and communities* (pp. 367-378). Melbourne, Australia: eScholarship Research Centre, The University of Melbourne.

Parker, B., Lamb, L., David, B., Korokai, K., Kuaso, A. & Bowman, J. (2012) Otoia, ancestral village of the Kerewo: Modelling the historical emergence of Kerewo regional polities on the island of Goaribari, south coast of mainland Papua New Guinea. In Simon G. Haberle, Bruno David (Eds.), *Peopled landscapes: Archaeological and biogeographic approaches to landscapes* (pp. 157-176). Acton, ACT, Australia: ANU E Press.

Porter, M., White, G. & Mazerolle, L. (2012) Innovative methods for terrorism and counter-terrorism data. In Cynthia Lum, Leslie W. Kennedy (Eds.), *Evidence-based counterterrorism policy* (pp. 91-112). New York, United States: Springer.

Sargeant, E., Murphy, K., Davis, J. & Mazerolle, L. (2012) Legitimacy and policing. In Tim Prenzler (Eds.), *Policing and security in practice: challenges and achievements* (pp. 20-36). Basingstoke, United Kingdom: Palgrave Macmillan.

Stimson, R. (2012) Endogenous factors in regional performance: a review of research in Australia. In Charlie Karlsson, Börje Johansson, Roger R. Stough (Eds.), *The regional economics of knowledge and talent: local advantage in a global context* (pp. 159-192). Cheltenham, United Kingdom: Edward Elgar.

Thomson, P., Lingard, B. & Wrigley, T. (2012) Reimagining school change. In Terry Wrigley, Pat Thomson, Bob Lingard (Eds.), *Changing schools: Alternative ways to make a world of difference* (pp. 1-14). London, England, U.K.: Routledge.

van der Veen, R. & Yerkes, M. (2012) Towards a new welfare settlement? The transformation of welfare state solidarity. In Romke van der Veen, Mara Yerkes, Peter Achterberg (Eds.), *The transformation of solidarity: changing risks and the future of the welfare state* (pp. 191-206). Amsterdam, Netherlands: Amsterdam University Press.

Wallington, T., Robinson, C. & Head, B. (2012) Crisis, change and water institutions in South-east Queensland: strategies for an integrated approach. In Thomas Measham, Stewart Lockie (Eds.), *Risk and Social Theory in Environmental Management* (pp. 185-198). Melbourne Australia: CSIRO Publishing.

Wrigley, T., Thomson, P. & Lingard, B. (2012) Resources for changing schools. In Terry Wrigley, Pat Thomson, Bob Lingard (Eds.), *Changing schools: Alternative ways to make a world of difference* (pp. 194-214). London, England, U.K.: Routledge.

Yerkes, M. & Tijdens, K. (2012) Corporatism and the mediation of social risks. In Romke van der Veen, Mara Yerkes, Peter Achterberg (Eds.), *The transformation of solidarity: changing risks and the future of the welfare state* (pp. 115-138). Amsterdam, Netherlands: Amsterdam University Press.

Yerkes, M. & van der Veen, R. (2012) Crisis and welfare state change in the Netherlands. In Bent Greve (Eds.), *The times they are a changing? Crisis and the welfare state* (pp. 101-115). Chichester: Wiley-Blackwell Publishing.

Conference Paper

Azeezullah, I., Pambudi, F., Shyy, T., Azeezullah, I., Ward, N., Hunter, J. et al. (2012). Statistical analysis and visualization services for spatially integrated social science datasets. In 8th IEEE International Conference on e-Science 2012. 8th IEEE International Conference on e-Science 2012, Chicago, IL, United States, (1-8). 8 -12 October 2012.

Bellamy, J., Head, B. & Ross, H. (2012). Blurring boundaries and building bridges: challenges of managing across borders in the Lake Eyre Basin. In Australian Stream Management Conference. Australian Stream Management Conference, Canberra, ACT, Australia, (1-11). 6-8 February 2012.

Chan, G., Kelly, A., Toumbourou, J., Young, R., Haynes, M., Hemphill, S. et al. (2012). Predicting steep trajectories of alcohol use in young adolescents: evidence of age-related variation in key risk factors. In Drug and Alcohol Review. Australasian Professional Society on Alcohol and other Drugs Conference 2012, Melbourne, Australia, (71-71). 18-21 November 2012.

Colley, L. (2012). Decision-making in a crisis: State government employment strategies for their public service workforces. In Public Policy Network Conference 2012. Public Policy Network Conference 2012, Melbourne, Australia. 25-27 January 2012.

Colley, L. (2012). Double jeopardy? Gender and ageing in public services. In Association of Industrial Relations Academics Australia and New Zealand (AIRAANZ) Conference 2012. Association of Industrial Relations Academics Australia and New Zealand (AIRAANZ) Conference 2012, Gold Coast, Australia. 8-10 February 2012.

Colley, L. (2012). Public sector labour markets during the economic crisis: Further erosion of the model employer reputation?. In 30th International Labour Process Conference (ILPC). 30th International Labour Process Conference (ILPC), Stockholm, Sweden. 27-29 March 2012.

Colley, L. (2012). The experience of older female public servants: On golden pond or same old quicksand?. In 7th Biennial International Interdisciplinary Conference on Gender Work and Organisation. 7th Biennial International Interdisciplinary Conference on Gender Work and Organisation, Keele University, U. K.. 27-29 June 2012.

Colley, L. (2012). The state of play for Australian HR practitioners. In 16th international Research Society on Public Management (IRSPM) Conference 2012. 16th international Research Society on Public Management (IRSPM) Conference 2012, Rome, Italy. 11-13 April 2012.

Colley, L. (2012). Who is steering now? Public sector executive employment during the economic crisis. In 2012 Meeting of the Public Sector Study Group, 16th World Congress of the International Labour and Employment Relations Association (ILERA). 2012 Meeting of the Public Sector Study Group, 16th World Congress of the International Labour and Employment Relations Association (ILERA), Philadelphia, Pennsylvania, USA. 2 - 5 July 2012.

Colley, L., Brown, K. & Hahn, C. (2012). Regional differences in Queensland public employment: Industrial relations issues in non-metropolitan areas. In Association of Industrial Relations Academics Australia and New Zealand (AIRAANZ) Conference 2012. Association of Industrial Relations Academics Australia and New Zealand (AIRAANZ) Conference 2012, Gold Coast, Australia. 8-10 February 2012.

Davis, K. & James, A. (2012). Integrated case management as a service response to homelessness: Townsville case study. In Australasian Housing Researcher's Conference. Australasian Housing Researcher's Conference, Adelaide, Australia. 8-10 February 2012.

Ferris, J., Mazerolle, L. Bates, L. Bennett, S. & King, M. (2012). Random Breath Tests and their effectiveness revisited. An examination of Random Breath Tests and alcohol-related crash data from 2004-2009 for Queensland and Western Australia. In Drug and Alcohol Review. Australasian Professional Society on Alcohol and other Drugs Conference 2012, Melbourne, Australia, (66-66). 18-21 November 2012.

James, A. (2012). The impact of higher education on entry to homeownership. In Australasian Housing Researchers' Conference. Australasian Housing Researchers' Conference, Adelaide, Australia. 8-10 February 2012.

Lloyd, B., Matthews, S. & Ferris, J. (2012). Symposium - innovative strategies to identify and monitor Alcohol Related Harms: implications for Policy and Practice. In Drug and Alcohol Review. Australasian Professional Society on Alcohol and other Drugs Conference 2012, Melbourne, Australia, (11-11). 18-21 November 2012.

Martinez, A., Western, M. Haynes, M. & Tomaszewski, W. (2012). Moving to higher quality employment: an exploratory study of multiple job holders in Indonesia. In Symposium on Asian Perspectives on Social Stratification and Inequality. Symposium on Asian Perspectives on Social Stratification and Inequality, Sendai, Japan. 27-28 October 2012.

Mazerolle, L., Ransley, J. Chamlin, M. McGuffog, I. & Ferris, J. (2012). Mandatory reporting of pseudoephedrine sales: an interrupted time series evaluation of Project Stop. In Drug and Alcohol Review. Australasian Professional Society on Alcohol and other Drugs Conference 2012, Melbourne, Australia, (65-65). 18-21 November 2012.

Memmott, P. (2012). Bio-architectural technology and the Dreamtime knowledge of spinifex grass. In Nezar Alsayyad (Eds.), Journal of the International Association for the Study of Traditional Environments. Biennial Conference of the International Association for the Study of Traditional Environments, Portland, OR, United States, (65-66). 4-7 October 2012.

Memmott, P., Greenop, K., Clarke, A., Go-Sam, C., Birdsall-Jones, C., Harvey-Jones, W. et al. (2012). NATSISS crowd-ing data: what does it assume and how can we challenge the orthodoxy?. In Boyd Hunter, Nicholas Biddle (Eds.), Social Science Perspectives on the 2008 National Aboriginal and Torres Strait Island Social Survey. Social Science Perspectives on the 2008 National Aboriginal and Torres Strait Island Social Survey, Canberra, ACT, Australia, (241-279). 11-12 April 2011.

Petersen, M. (2012). A geography of older women at risk of homelessness in Brisbane, Queensland. In 6th Australasian Housing Researcher's Conference. 6th Australasian Housing Researcher's Conference, Adelaide, SA, Australia. 8-10 February 2012.

Petersen, M. (2012). Older Australians experiencing homelessness. In Australasian Journal On Ageing. 45th National Conference of the Australian Association of Gerontology, Brisbane, Australia, (45-45). 20-23 November 2012.

Petriwskyj, A. (2012). Political participation and inclusion of the voices of older Australians. In Reiactis International Symposium. Reiactis International Symposium, Dijon, France. 25-27 January 2012.

Pritchard, M., Crothers, C., Cartwright, D., Colditz, P., de Dassel, T., Callan, S. et al. (2012). Parents evaluation of developmental status (PEDS:DM) and the parenting relationships in children born very preterm. In 4th Congress of the European Academy of Paediatric Societies EAPS. 4th Congress of the European Academy of Paediatric Societies EAPS, Istanbul, Turkey. 5 - 9 October 2012.

Rohde, D., Corcoran, J. White, G. & Huang, R. (2012). Visualization of predictive distributions for discrete spatial-temporal log cox processes approximated with MCMC. In Hujun Yin, José A. F. Costa, Guilherme Barreto (Eds.), Lecture Notes in Computer Science. 13th International Conference on Intelligent Data Engineering and Automated Learning (IDEAL 2012), Natal, Brazil, (286-293). 29 - 31 August 2012.

Sanchez-Riera, L., Chen, C., Wilson, N., Hoy, D., Smith, E., Buchbinder, R. et al. (2012). Selection bias in population-based studies on bone mass: a worldwide perspective. In Osteoporosis International. IOF-ECCEO European Congress on Osteoporosis and Osteoarthritis / 2nd IOF-ESCEO Pre-Clinical Symposium, Bordeaux, France, (S68-S69). 21-24 March 2012.

Tomaszewski, W. (2012). Living environment and wellbeing in later life: Exploring cross-national differences in Europe. In Spring 2012 Meeting of ISA RC28 on Economic Transformation and Social Stratification in Comparative Perspectives. Spring 2012 Meeting of ISA RC28 on Economic Transformation and Social Stratification in Comparative Perspectives, Hong Kong. 10-13 May 2012.

Tomaszewski, W. (2012). The impact of housing quality on social participation and wellbeing of older Australians. In Australasian Housing Researchers' Conference. Australasian Housing Researchers' Conference, Adelaide, Australia. 8-10 February 2012.

Van Dooren, K., Ware, R. Brooker, K. & Lennox, N. (2012). Out of sight, out of mind: People with intellectual disability in public health research. In Journal of Intellectual Disability Research. 2012 IASSID World Congress, Halifax, Nova Scotia, (749-749). 2012.

van Uffelen, J., Heesch, K. van Gellecum, Y. Burton, N. & Brown, W. (2012). Social interaction and physical activity in women in their seventies. In Australasian Journal On Ageing. Australian Association of Gerontology, 45th National Conference, Brisbane Australia, (61-62). 20-23 November 2012.

Western, M. & Tomaszewski, W. (2012). Inequalities in objective and subjective social wellbeing. In Spring 2012 Meeting of ISA RC28. Spring 2012 Meeting of ISA RC28, Hong Kong. 10 - 13 May 2012.

Journal Article

Agger, I., Igreja, V. Kiehle, R. & Polatin, P. (2012) Testimony ceremonies in Asia: integrating spirituality in testimonial therapy for torture survivors in India, Sri Lanka, Cambodia and the Philippines. Transcultural Psychiatry, 49(3-4): 568-589.

Allen, D. & Faff, R. (2012) The Global Financial Crisis: Some attributes and responses. Accounting and Finance, 52(1): 1-7.

Alonso-Marroquin, F., Azeezullah, S. Galindo-Torres, S. & Olsen-Kettle, L. (2012) Bottlenecks in granular flow: when does an obstacle increase the flow rate in an hourglass?. Physical Review E, 85(2): 020301.1-020301.4.

Angus, D., Smith, A. & Wiles, J. (2012) Conceptual recurrence plots: Revealing patterns in human discourse. IEEE Transactions on Visualization and Computer Graphics, 18(6): 988-997.

Angus, D., Smith, A. & Wiles, J. (2012) Human communication as coupled time series: Quantifying multi-participant recurrence. IEEE Transactions on Audio, Speech, and Language Processing, 20(6): 1795-1807.

Angus, D., Watson, B. Smith, A. Gallois, C. & Wiles, J. (2012) Visualising conversation structure across time: Insights into effective doctor-patient consultations. PLoS One, 7(6): e38014.1-e38014.12.

Antrobus, E., McKimmie, B. & Newcombe, P. (2012) Community members' beliefs about children in Australian Courts. Psychiatry, Psychology and Law, 19(4): 497-516.

Bain, P., Hornsey, M. Bongiorno, R. & Jeffries, C. (2012) Promoting pro-environmental action in climate change deniers. Nature Climate Change, 2(8): 600-603.

Barlow, F., Paolini, S., Pedersen, A., Hornsey, M., Radke, H., Harwood, J. et al. (2012) The contact caveat: negative contact predicts increased prejudice more than positive contact predicts reduced prejudice. Personality and Social Psychology Bulletin, 38(12): 1629-1643.

Bastian, B., Costello, K. Loughnan, S. & Hodson, G. (2012) When closing the human-animal divide expands moral concern: the importance of framing. Social Psychological and Personality Science, 3(4): 421-429.

Bastian, B., Jetten, J. & Radke, H. (2012) Cyber-dehumanization: violent video game play diminishes our humanity. Journal of Experimental Social Psychology, 48(2): 486-491.

Bastian, B., Kuppens, P., Hornsey, M., Park, J., Koval, P. & Uchida, Y. (2012) Feeling bad about being sad: the role of social expectancies in amplifying negative mood. Emotion, 12(1): 69-80.

Bastian, B., Loughnan, S. Haslam, N. & Radke, H. (2012) Don't mind meat? the denial of mind to animals used for human consumption. Personality and Social Psychology Bulletin, 38(2): 247-256.

Bastian, B., Lusher, D. & Ata, A. (2012) Contact, evaluation and social distance: Differentiating majority and minority effects. International Journal of Intercultural Relations, 36(1): 100-107.

Baxter, J. & Hewitt, B. (2013) Negotiating domestic labor: women's earnings and housework time in Australia. Feminist Economics, 19(1): 29-53.

Benoit, C., Stengel, C. Phillips, R. Zadoroznyj, M. & Berry, S. (2012) Privatisation and marketisation of post-birth care: the hidden costs for new mothers. International Journal for Equity in Health, 11(1 Article No.61).

Berends, L., Ferris, J. & Laslett, A. (2012) A problematic drinker in the family: variations in the level of negative impact experienced by sex, relationship and living status. Addiction Research and Theory, 20(4): 300-306.

Bissing-Olson, M., Iyer, A. Fielding, K. & Zacher, H. (2013) Relationships between daily affect and pro-environmental behavior at work: the moderating role of pro-environmental attitude. Journal of Organizational Behavior, 34(2): 156-175.

Bissing-Olson, M., Zacher, H. Fielding, K. & Iyer, A. (2012) An intraindividual perspective on pro-environmental behaviors at work. Industrial and Organizational Psychology, 5(4): 500-502.

Brown, M. (2012) Culture clash. Global: The International Briefing, 9: 67-67.

Brown, M. (2012) Entangled worlds: villages and political community in Timor-Leste. Local Global, 11: 54-71.

Brown, M. (2012) Hybrid governance and democratization - village governance in Timor-Leste. Local Global, 11: 156-164.

Burton, N., Haynes, M. van Uffelen, J. Brown, W. & Turrell, G. (2012) Mid-aged adults' sitting time in three contexts. American Journal of Preventive Medicine, 42(4): 363-373.

Chan, R., Webster, J. & Marquart, L. (2012) A systematic review: the effects of orientation programs for cancer patients and their family/carers. International Journal of Nursing Studies, 49(12): 1558-1567.

Cherney, A., Head, B. Boreham, P. Povey, J. & Ferguson, M. (2012) Perspectives of academic social scientists on knowledge transfer and research collaborations: a cross-sectional survey of Australian academics. Evidence and Policy, 8(4): 433-453.

Cherney, A., Povey, J., Head, B., Boreham, P. & Ferguson, M. (2012) What influences the utilisation of educational research by policy-makers and practitioners? - The perspectives of academic educational researchers. *International Journal of Educational Research*, 56: 23-34.

Cherrier, H., Russell, S. & Fielding, K. (2012) Corporate environmentalism and top management identity negotiation. *Journal of Organizational Change Management*, 25(4): 518-534.

Cheshire, L. & Wickes, R. (2012) Crime talk in the suburbs: symbolic representations of status and security on a master planned estate. *Housing Studies*, 27(8): 1162-1181.

Colley, L. (2012) How did public services fare? A review of Australian state public service labour markets during the global financial crisis. *Journal of Industrial Relations*, 54(5): 612-636.

Colley, L. (2012) Public employment in the economic downturn: The case of an Australian state. *International Journal of Public Administration*, 35(8): 513-523.

Colley, L. (2012) Weathering the storm: Australian public sector employment security during decades of public management reform and the recent economic downturn. *Review of Public Personnel Administration*, 32(1): 87-101.

Colley, L., McCourt, W. & Waterhouse, J. (2012) Hybrids and contradictions: Human resource management in the contemporary public sector. *International Journal of Public Administration*, 35(8): 507-512.

Couzens, D., Haynes, M. & Cuskelly, M. (2012) Individual and environmental characteristics associated with cognitive development in Down syndrome: a longitudinal study. *Journal of Applied Research in Intellectual Disabilities*, 25(5): 396-413.

Davidson, J., Go Sam, C., Memmott, P. & Grant, E. (2012) Building new housing in remote Indigenous communities. *AHURI Research and Policy Bulletin*(152).

Dempsey, D. & Hewitt, B. (2012) Editorial: Fatherhood in the 21st Century. *Journal of Family Studies*, 18(2-3): 98-102.

Everingham, J. (2012) Towards social sustainability of mining: The contribution of new directions in impact assessment and local governance. *Greener Management International*(57): 91-103.

Everingham, J., Warburton, J., Cuthill, M. & Bartlett, H. (2012) Collaborative governance of ageing: Challenges for local government in partnering with the seniors' sector. *Local Government Studies*, 38(2): 161-181.

Fielding, K. & Head, B. (2012) Determinants of young Australians' environmental actions: The role of responsibility attributions, locus of control, knowledge and attitudes. *Environmental Education Research*, 18(2): 171-186.

Fielding, K., Head, B., Laffan, W., Western, M. & Hoegh-Guldberg, O. (2012) Australian politicians' beliefs about climate change: political partisanship and political ideology. *Environmental Politics*, 21(5): 712-733.

Fielding, K., Russell, S., Spinks, A. & Mankad, A. (2012) Determinants of household water conservation: The role of demographic, infrastructure, behavior, and psychosocial variables. *Water Resources Research*, 48: W10510.1-W10510.12.

Fisk, K., Cherney, A., Hornsey, M. & Smith, A. (2012) Using computer-aided content analysis to map a research domain: a case study of institutional legitimacy in postconflict East Timor. *Sage Open*, 2(4): 1-15.

Game, H., Mondal, S., Wallis, L., Memmott, P., Martin, D., Wright, B. et al. (2012) Indigenous and modern biomaterials derived from *Triodia* ('spinifex') grasslands in Australia. *Australian Journal of Botany*, 60(2): 114-127.

Gillies, R., Nichols, K., Burgh, G. & Haynes, M. (2012) The effects of two strategic and meta-cognitive questioning approaches on children's explanatory behaviour, problem-solving, and learning during cooperative, inquiry-based science. *International Journal of Educational Research*.

Head, B. (2012) The contribution of integrity agencies to good governance. *Policy Studies*, 33(1): 7-20.

Heesch, K., van Uffelen, J., van Gellecum, Y. & Brown, W. (2012) Dose-response relationships between physical activity, walking and health-related quality of life in mid-age and older women. *Journal of Epidemiology and Community Health*, 66(8): 670-677.

Henman, P. & Jones, A. (2012) Exploring the use of residual measures of housing affordability in Australia: Methodologies and concepts. *AHURI Final Report*: i-35.

Hewitt, B. (2012) Review of Household divisions of labour: teamwork, gender and time by Elisa Rose Birch, Anh T. Le and Paul W. Miller. *Journal of Sociology*, 48(3): 323-325.

Hewitt, B. & Baxter, J. (2012) Who gets married in Australia? The characteristics associated with a transition into first marriage 2001–6. *Journal of Sociology*, 48(1): 43-61.

Hewitt, B., Baxter, J. & Mielejohn, C. (2012) Non-standard employment and fathers' participation in household labour. *Journal of Family Studies*, 18(2-3): 175-186.

Hewitt, B., Craig, L. & Baxter, J. (2012) Editorial: family, work and well-being over the life course. *Journal of Population Research*, 29(4): 289-292.

Hewitt, B., Turrell, G. & Giskes, K. (2012) Marital loss, mental health and the role of perceived social support: Findings from six waves of an Australian population based panel study. *Journal of Epidemiology and Community Health*, 66(4): 308-314.

Honan, E., Hamid, M., Alhamdan, B., Phommalangsy, P. & Lingard, B. (2012) Ethical issues in cross-cultural research. *International Journal of Research and Method in Education*.

Howe, A., Jones, A. & Tilse, C. (2012) What's in a name? Similarities and differences in international terms and meanings for older peoples' housing with services. *Ageing and Society*: 1-32.

Igreja, V. (2012) Multiple temporalities in indigenous justice and healing practices in Mozambique. *International Journal of Transitional Justice*, 6(3): 404-422.

Johnson, G., Parkinson, S. & Parsell, C. (2012) Policy shift or program drift? Implementing housing first in Australia. *AHURI Final Report*(184): 1-21.

Kaukinen, C., Meyer, S. & Akers, C. (2013) Status compatibility and help-seeking behaviors among female intimate partner violence victims. *Journal of Interpersonal Violence*, 28(3): 577-601.

Kelly, A., Chan, G., Toumbourou, J., O'Flaherty, M., Homel, R., Patton, G. et al. (2012) Very young adolescents and alcohol: Evidence of a unique susceptibility to peer alcohol use.. *Addictive Behaviors*, 37(4): 414-419.

Kelly, A., O'Flaherty, M., Toumbourou, J., Homel, R., Patton, G., White, A. et al. (2012) The influence of families on early adolescent school connectedness: Evidence that this association varies with adolescent involvement in peer drinking networks. *Journal of Abnormal Child Psychology*, 40(3): 437-447.

Kifle, T. (2012) Relative income and job satisfaction: Evidence from Australia. *Applied Research in Quality of Life*.

Kifle, T. & Desta, I. (2012) The relationship between body mass index and socioeconomic and demographic indicators: evidence from Australia. *International Journal of Public Health*, 57(1): 135-142.

Kifle, T. & Hailemariam Desta, I. (2012) Gender differences in domains of job satisfaction: evidence from doctoral graduates from Australian universities. *Economic Analysis and Policy*, 42(3): 319-338.

Kimman, M., Norman, R., Jan, S., Kingston, D. & Woodward, M. (2012) The burden of cancer in member countries of the Association of Southeast Asian Nations (ASEAN). *Asian Pacific Journal of Cancer Prevention*, 13(2): 411-420.

Laslett, A., Ferris, J., Dietze, P. & Room, R. (2012) Social demography of alcohol-related harm to children in Australia. *Addiction*, 107(6): 1082-1089.

Laslett, A., Room, R., Dietze, P. & Ferris, J. (2012) Alcohol's involvement in recurrent child abuse and neglect cases. *Addiction*, 107(10): 1786-1793.

Lee, N., Pennay, A., Hester, R., McKetin, R., Nielsen, S. & Ferris, J. (2013) A pilot randomised controlled trial of modafinil during acute methamphetamine withdrawal: feasibility, tolerability and clinical outcomes. *Drug and Alcohol Review*, 32(1): 88-95.

Lim, S., Vos, T., Flaxman, A., Danaei, G., Shibuya, K., Adair-Rohani, H. et al. (2012) A comparative risk assessment of burden of disease and injury attributable to 67 risk factors and risk factor clusters in 21 regions, 1990-2010: a systematic analysis for the Global Burden of Disease Study 2010. *Lancet*, 380(9859): 2224-2260.

Lingard, B., Creagh, S. & Vass, G. (2012) Education policy as numbers: Data categories and two Australian cases of misrecognition. *Journal of Education Policy*, 27(3): 315-333.

Lingard, B., Mills, M. & Weaver-Hightower, M. (2012) Interrogating recuperative masculinity politics in schooling. *International Journal of Inclusive Education*, 16(4): 407-421.

Lingard, B. & Sellar, S. (2012) A policy sociology reflection on school reform in England: From the 'Third Way' to the 'Big Society'. *Journal of Educational Administration and History*, 44(1): 43-63.

Loode, S. (2011) Peacebuilding in complex social systems. *Peace, Conflict and Development*(18): 1-15.

Manathunga, C., Pitt, R., Cox, L., Boreham, P., Mellick, G. & Lant, P. (2012) Evaluating industry-based doctoral research programs: Perspectives and outcomes of Australian Cooperative Research Centre graduates. *Studies in Higher Education*, 37(7): 843-858.

Martin, B., Hewitt, B., Baird, M., Baxter, J., Heron, A., Whitehouse, G. et al. (2012) Paid parental leave evaluation: Phase 1. *Occasional Papers Series*(44).

Mazerolle, L., Bennett, S., Antrobus, E. & Eggins, E. (2012) Procedural justice, routine encounters and citizen perceptions of police: main findings from the Queensland Community Engagement Trial (QCET). *Journal of Experimental Criminology*, 8(4): 343-367.

Mazerolle, L., Davis, J., Higginson, A., Mengersen, K., Bedford, L., Somerville, A. et al. (2012) Community-oriented policing's impact on interpersonal violent crime in developing countries. *Campbell Collaboration*.

Mazerolle, L., Higginson, A., Thompson, J., Somerville, A. & Ham, K. (2012) The effectiveness of crop targeting as a drug control strategy (Title). *Campbell Collaboration*.

Mazerolle, L. & Ransley, J. (2012) Crime, place, and pollution expanding crime reduction options through a regulatory approach. *Criminology and Public Policy*, 11(2): 335-344.

Mazerolle, L., White, G., Ferguson, P. & Ransley, J. (2012) Violence in and around entertainment districts: a longitudinal analysis of the impact of late-night lockdown legislation. *Law and Policy*, 34(1): 55-79.

Mazerolle, L., & Martin, P. (2012). Evidence-based policing and procedural justice. *Journal of California Law Enforcement*, 46(3), 13–17.

McCrea, R. & Walters, P. (2012) Impacts of urban consolidation on urban liveability: comparing an inner and outer suburb in Brisbane, Australia. *Housing, Theory and Society*, 29(2): 196-206.

Memmott, P., Birdsall-Jones, C. & Greenop, K. (2012) Australian Indigenous house crowding. *AHURI Final Report*, 194: i-192.

Meyer, S. (2012) Why women stay: A theoretical examination of rational choice and moral reasoning in the context of intimate partner violence. *Australian and New Zealand Journal of Criminology*, 45(2): 179-193.

Mondal, S., Memmott, P. & Martin, D. (2012) Preparation and characterization of polyurethanes from spinifex resin based bio-polymer. *Journal of Polymers and the Environment*, 20(2): 326-334.

Mondal, S., Memmott, P.Wallis, L. & Martin, D. (2012) Physico-thermal properties of spinifex resin bio-polymer. *Materials Chemistry and Physics*, 133(2-3): 692-699.

Murphy, K. & Cherney, A. (2012). Understanding cooperation with police in a diverse society. *British Journal of Criminology*, 52, 181–201.

Murray, C., Vos, T., Lozano, R., Naghavi, M., Flaxman, A., Michaud, C. et al. (2012) Disability-adjusted life years (DALYs) for 291 diseases and injuries in 21 regions, 1990-2010: a systematic analysis for the Global Burden of Disease Study 2010. *Lancet*, 380(9859): 2197-2223.

Norman, R., Byambaa, M., De, R., Butchart, A., Scott, J. & Vos, T. (2012) The long-term health consequences of child physical abuse, emotional abuse, and neglect: a systematic review and meta-analysis. *PLoS Medicine*, 9(11): e1001349.1-e1001349.31.

Parsell, C. (2012) Home is where the house is: The meaning of home for people sleeping rough. *Housing Studies*, 27(2): 159-173.

Parsell, C. (2012) Response to Ann Coleman: Context, context, context: A commentary on responding to people sleeping rough: Dilemmas and opportunities for social work. *Australian Social Work*, 65(2): 280-285.

Parsell, C. & Marston, G. (2012) Beyond the 'at risk' individual: Housing and the eradication of poverty to prevent homelessness. *Australian Journal of Public Administration*, 71(1): 33-44.

Parsell, C. & Parsell, M. (2012) Homelessness as a choice. *Housing Theory and Society*, 29(4): 420-434.

Peeters, G., van Gellecum, Y.van Uffelen, J. Burton, N. & Brown, W. (2012) Contribution of house and garden work to the association between physical activity and well-being in young, mid-aged and older women. *British Journal of Sports Medicine*.

Perales, F. & Vidal, S. (2013) Occupational characteristics, occupational sex segregation, and family migration decisions. *Population Space and Place*.

Petersen, M. & Warburton, J. (2012) Residential complexes in Queensland, Australia: A space of segregation and ageism?. *Ageing and Society*, 32(1): 60-84.

Petriwskyj, A., Warburton, J.Everingham, J. & Cuthill, M. (2012) Diversity and inclusion in local governance: An Australian study of seniors' participation. *Journal of Aging Studies*, 26(2): 182-191.

Phillips, R. & Parsell, C. (2012) The role of assertive outreach in ending 'rough sleeping'. *AHURI Final Report*: i-75.

Porter, M. & White, G. (2012) Self-exciting hurdle models for terrorist activity. *Annals of Applied Statistics*, 6(1): 106-124.

Price, J., Fielding, K. & Leviston, Z. (2012) Supporters and opponents of potable recycled water: culture and cognition in the Toowoomba referendum. *Society and Natural Resources*, 25(10): 980-995.

Ramsey, D., Forsyth, D., Veltman, C., Nicol, S., Todd, C., Allen, R. et al. (2012) An approximate Bayesian algorithm for training fuzzy cognitive map models of forest responses to deer control in a New Zealand adaptive management experiment. *Ecological Modelling*, 240: 93-104.

Salomon, J., Vos, T., Hogan, D., Gagnon, M., Naghavi, M., Mokdad, A. et al. (2012) Common values in assessing health outcomes from disease and injury: disability weights measurement study for the Global Burden of Disease Study 2010. *Lancet*, 380(9859): 2129-2143.

Schloenhardt, A. & Hunt, R. (2012) The role of non-governmental organisations in Australia's anti-trafficking in persons framework. *University of Western Australia Law Review*, 36(1): 57-91.

Shepherd, N. & Meehan, T. (2012) A multilevel framework for effective interagency collaboration in mental health. *Australian Journal of Public Administration*, 71(4): 403-411.

Skrbis, Z., Western, M., Tranter, B., Hogan, D., Coates, R., Smith, J. et al. (2012) Expecting the unexpected: Young people's expectations about marriage and family. *Journal of Sociology*, 48(1): 63-83.

Smith, A., Lyons, A., Ferris, J., Richters, J., Pitts, M., Shelley, J. et al. (2012) Incidence and persistence/recurrence of women's sexual difficulties: findings from the Australian longitudinal study of health and relationships. *Journal of Sex and Marital Therapy*, 38(4): 378-393.

Smith, J., Skrbis, Z. & Western, M. (2013) Beneath the 'Digital Native' myth: understanding young Australians' online time use. *Journal of Sociology*, 49(1): 97-118.

Swann Jr., W., Jetten, J.Gomez, A. Whitehouse, H. & Bastian, B. (2012) When group membership gets personal: A theory of identity fusion. *Psychological Review*, 119(3): 441-456.

Thomson, P., Lingard, B. & Wrigley, T. (2012) Ideas for changing educational systems, educational policy and schools. *Critical Studies in Education*, 53(1): 1-7.

Thomson, P., Lingard, B. & Wrigley, T. (2012) Ideas for changing educational systems, educational policy and schools. *Critical Studies in Education*, 53(1): 1-7.

Treas, J. & Tai, T. (2012) Apron strings of working mothers: maternal employment and housework in cross-national perspective. *Social Science Research*, 41(4): 833-842.

Treas, J. & Tai, T. (2012) How couples manage the household: work and power in cross-national perspective. *Journal of Family Issues*, 33(8): 1088-1116.

Trenczek, T. & Looe, S. (2012) Mediation "made in Germany": A quality product. *Australasian Dispute Resolution Journal*, 23(1): 61-70.

Turrell, G., Haynes, M.Wilson, L. & Giles-Corti, B. (2013) Can the built environment reduce health inequalities? A study of neighbourhood socioeconomic disadvantage and walking for transport. *Health & Place*, 19: 89-98.

Turrell, G., Hewitt, B. & Miller, S. (2012) The influence of neighbourhood disadvantage on smoking cessation and its contribution to inequalities in smoking status. *Drug and Alcohol Review*, 31(5): 645-652.

van de Schoot, R., Yerkes, M. & Sonneveld, H. (2012) The employment status of doctoral recipients: An exploratory study in the Netherlands. *International Journal of Doctoral Studies*, 7: 331-348.

Van Uffelen, J., Heesch, K.van Gellecum, Y. Burton, N. & Brown, W. (2012) Which older women could benefit from interventions to decrease sitting time and increase physical activity?. *Journal of the American Geriatrics Society*, 60(2): 393-396.

von Hippel, C. & Kalokerinos, E. (2012) When temporary employees are perceived as threatening: antecedents and consequences. *Leadership and Organization Development Journal*, 33(2): 200-216.

Vos, T., Flaxman, A., Naghavi, M., Lozano, R., Michaud, C., Ezzati, M. et al. (2012) Years lived with disability (YLDs) for 1160 sequelae of 289 diseases and injuries 1990-2010: a systematic analysis for the Global Burden of Disease Study 2010. *Lancet*, 380(9859): 2163-2196.

White, G., Porter, M. & Mazerolle, L. (2012) Terrorism risk, resilience and volatility: a comparison of terrorism patterns in three southeast Asian countries. *Journal of Quantitative Criminology*.

White, K., Terry, D., Troup, C., Rempel, L., Norman, P., Mummery, K. et al. (2012) An Extended Theory of Planned Behavior Intervention for Older Adults With Type 2 Diabetes and Cardiovascular Disease. *Journal of Aging and Physical Activity*, 20(3): 281-299.

Wrigley, T., Lingard, B. & Thomson, P. (2012) Pedagogies of transformation: Keeping hope alive in troubled times. *Critical Studies in Education*, 53(1): 95-108.

Yerkes, M., van de Schoot, R. & Sonneveld, H. (2012) Who are the job seekers? explaining unemployment among doctoral recipients. *International Journal of Doctoral Studies*, 7: 153-166.

Yu, M., Ziviani, J.Baxter, J. & Haynes, M. (2012) Time use differences in activity participation among children 4–5 years old with and without the risk of developing conduct problems. *Research in Developmental Disabilities*, 33(2): 490-498.

Zadoroznyj, M., Benoit, C. & Berry, S. (2012) Motherhood, medicine and markets: the changing cultural politics of postnatal care provision. *Sociological Research Online*, 17(3): 24.1-24.11.

Reference Entry

Memmott, P. (2012) Aboriginal architecture. *Encyclopedia of Australian architecture*: 1-4.

Research Report

Barclay, M., Everingham, J., Cheshire, L., Brereton, D., Pattenden, C. & Lawrence, G. (2012) Local government, mining companies and resource development in regional Australia: meeting the governance challenge. : 1-39.

Brodrribb, W., Zadoroznyj, M. & Dane, A. (2012) Evaluating the implementation of the Universal Postnatal Contact Services in Queensland: the experiences of health care providers and mothers.

Head, B. (2012) The challenge of reforming federalism. : 76-78.

Mazerolle, L., White, G., & Smith, A. (2012). The National Security i-Library. Modelling the patterns of transnational and organised crime: The effectiveness of government based interventions in international crime reduction. Final report. Brisbane, Australia: The Institute for Social Science Research, The University of Queensland.

Mazerolle, L., Wickes, R., Cherney, A., Murphy, K., Sargeant, E., and Zahnow, R. (2012). Australian Community Capacity Study (ACCS): Wave 3 Brisbane, Wave 1 Melbourne. Technical Report No. 3: Study method. Brisbane, Australia: ARC Centre of Excellence in Policing and Security. Retrieved from <http://www.uq.edu.au/accs/research-and-publications>

Murphy, K., Cherney, A., Wickes, R., Mazerolle, L., & Sargeant, E. (2012). The community capacity survey – Face-to-face ethnic minority interviews: Methodology and preliminary findings. Brisbane, Australia: Australian Research Council Centre for Excellence in Policing and Security. Retrieved from <http://www.uq.edu.au/accs/research-and-publications>

Thesis

Buchler, S. (2012) Cohabitation in Australia: characteristics, transitions and outcomes.

Heybroek, L. (2012) Life satisfaction across the retirement transition: a latent growth curve modeling approach.

Hunt, C. (2012) Policing transformation, transforming police: monitoring and evaluating the impact of police in UN peace operations.

Kwun Sun Lau, R. (2012) Responding to mass atrocities: the responsibility to protect and the responsibility to punish.

Mcdonald, R. (2012) When norms collide: how conflicting and congruent ingroup norms influence environmental decision making.

Peach, L. (2012) Factors associated with young Australians' work and family choices. .

ISSR

INSTITUTE FOR SOCIAL SCIENCE RESEARCH

Annual Report 2012

