



THE UNIVERSITY  
OF QUEENSLAND  
AUSTRALIA

ISSR

Institute for Social Science Research

Annual Report





# CONTENTS

Messages	6
Highlights	8
Events	24
Awards	34
International	38
Research & Higher Degree	44
Staff	52
Projects	54
Publications	58

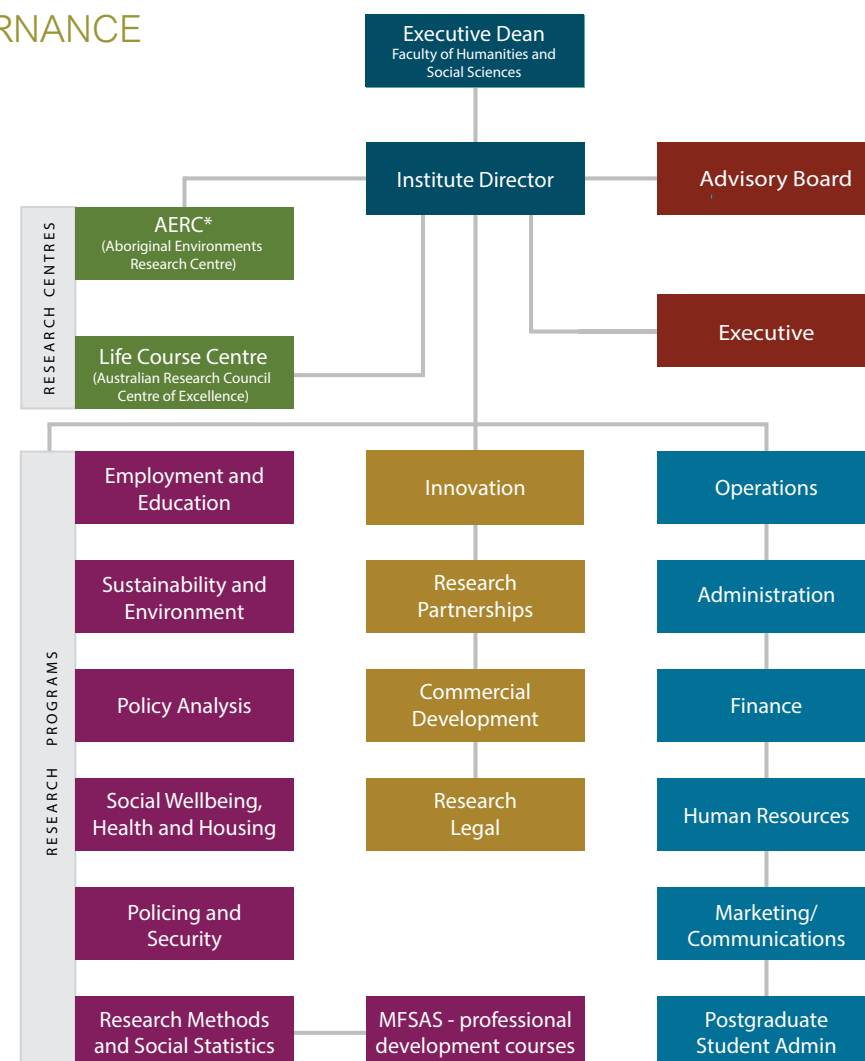
# ISSR

Institute for Social Science Research

## SOCIAL SCIENCE leadership for a BETTER WORLD



### GOVERNANCE



\* Jointly housed with School of Architecture

### VISION

Social science leadership for a better world

### MISSION

To undertake social science for public value, and to contribute to the public interest, the advancement of knowledge, and the advancement of our fields.

### GOVERNANCE

The Institute for Social Science Research (ISSR) is governed by the Institute. The Advisory Board of ISSR provides advice and guidance to the Director and University with respect to the Institute's strategic directions and performance in areas of

- Research
- Learning
- Engagement

### Executive

Professor Mark Western, Director

Ms Cordelia Jackson, Deputy Director (Operations)

Ms Sue McKell, Deputy Director (Innovation)

Professor Michele Haynes, Research Program Leader of Research Methods and Social Statistics

Professor Brian Head, Research Program Leader of both Sustainability and Environment, and Policy Analysis

Professor Bill Martin, Research Program Leader of Employment and Education

Professor Lorraine Mazerolle, Research Program Leader of Policing and Security

Professor Paul Memmott, Director of Aboriginal Environments Research Centre (AERC)

Professor Mark Moran, Professor in Development Effectiveness

Dr Cameron Parsell, Research Program Leader of Social Wellbeing, Health and Housing

### Advisory Board

Professor Anton Middelberg, DVCR - UQ (Chair)

Ms Sue Rickerby, Director-General, Department of Science, Information, Technology, Innovation and the Arts

Professor Tim Dunne, HaSS Executive Dean - UQ

Professor Mark Western, Director, ISSR - UQ





## Message from Vice-Chancellor and President

PROFESSOR PETER HØJ

The Institute for Social Science Research is The University of Queensland's major social science research entity, with an expanding record of results that have demonstrable public value and advance global knowledge. It is significantly due to ISSR people that UQ is appreciably strong in the social sciences, with 2013 rankings placing the discipline 36 in the Times Higher Education World University Rankings (overall UQ ranking 63), and 40 in the QS World ranking (UQ overall ranking 43).

The Institute finished the year on a resounding note, securing \$20 million from the Australian Research Council (ARC) for the Centre of Excellence for Children and Families Over the Life Course, known as the Life Course Centre. This is the largest grant ever for a UQ-led social science initiative, and will enable an evidence-based fightback against inter-generational disadvantage. Our stellar collaborating institutions – which include a number of the world's top 20 universities – and partners from government and the community, are a mark of widespread esteem for the social sciences at UQ.

Momentum had gathered in the months preceding the Life Course Centre announcement, with a series of successes. For example in ARC Linkage, ISSR attained grants worth over \$1 million, 10% of UQ's research income for this scheme for the year. Several Institute staff won major awards, including Professor Brian Head who secured a prestigious ARC Discovery Outstanding Researcher fellowship, and Professor Lorraine Mazerolle who won the Joan McCord Award from the Division of Experimental Criminology in the American Society for Criminology.

Throughout the year, the Institute continued to broaden and deepen its collaboration with government and reinforce its international connections.

In 2014, as a result of a university-level faculties restructure, ISSR becomes part of a new Faculty of Humanities and Social Sciences. This reorganisation strengthens the Institute inside the University and positions it more effectively to lead the University's research directions in the social sciences, in concert with colleagues from an array of disciplines.

As UQ sharpens its focus on excellent research that can translate into outstanding results for society, the ISSR's targeting of high-calibre social science towards local, national and global problems will grow in importance. I congratulate Institute staff on their impact, and thank them and their collaborators and partners for contributing to the knowledge leadership which will enable a better world.



## Message from ISSR Director

PROFESSOR MARK WESTERN

2013 was a year of significant change for the Institute. We made headway on a number of large Institute projects, and one significant initiative, the Queensland Centre for Social Science Innovation, completed its final report. The Institute achieved outstanding success in Australian Research Council Fellowship and Linkage Project schemes, and topped this off in December by winning the right to host the Australian Research Council (ARC) Centre of Excellence in Families and Children Over the Life Course. The ARC Centre of Excellence Scheme is the ARC's flagship research funding scheme and some would say Australia's flagship research funding scheme. The Centre of Excellence program awards seven years of funding to allow leading researchers the time to work on the most significant research questions and problems. Before ISSR's success, there had only ever been two Centres awarded previously in the Social Sciences. ISSR's proposal was also the only UQ led bid to be successful in the current round as well as being the largest grant ever awarded in the Social Sciences to the University.

We also learned, in 2013, that ISSR had been approved by the University to become an enrolling unit for Research Higher Degree students from January 2014. This initiative is a personal favourite of mine. PhD and Masters by Research students are the future of our fields. They bring energy, enthusiasm and dynamism, and they offer senior researchers a chance to give something back in return for the training and mentorship we have been fortunate enough to receive from others. ISSR has big plans for our research students and we will be aiming to offer a nationally distinctive, high quality research training experience that will properly equip our graduates to become the next generations of research leaders regardless of whether or not they work in a University. Although ISSR did not enrol students directly in 2013, our staff were extensively involved in PhD supervision. You can read about some of the exceptional students we worked with in this year's Annual Report.

Throughout much of 2013 the University reviewed its Faculty structure. The Review concluded in June and recommended that the Social and Behavioural Sciences Faculty and the Arts Faculty be combined to create a new Faculty of Humanities and Social Sciences (HASS), which would include ISSR. An implementation group worked through the second half of the year and on January 1, 2014, the HASS Faculty was born. Preliminary indications are that becoming part of the new Faculty will be a very positive experience for ISSR, creating new opportunities to interact with academic Schools through teaching, research and higher degree research supervision.

As it seems with every year, 2013 was marked not only by a number of substantial achievements, but by a number of significant events that will set an agenda and activities for the year ahead. There are some very exciting things on the horizon! I hope you will enjoy reading about our activities for 2013 and I'd welcome the opportunity to hear from you.

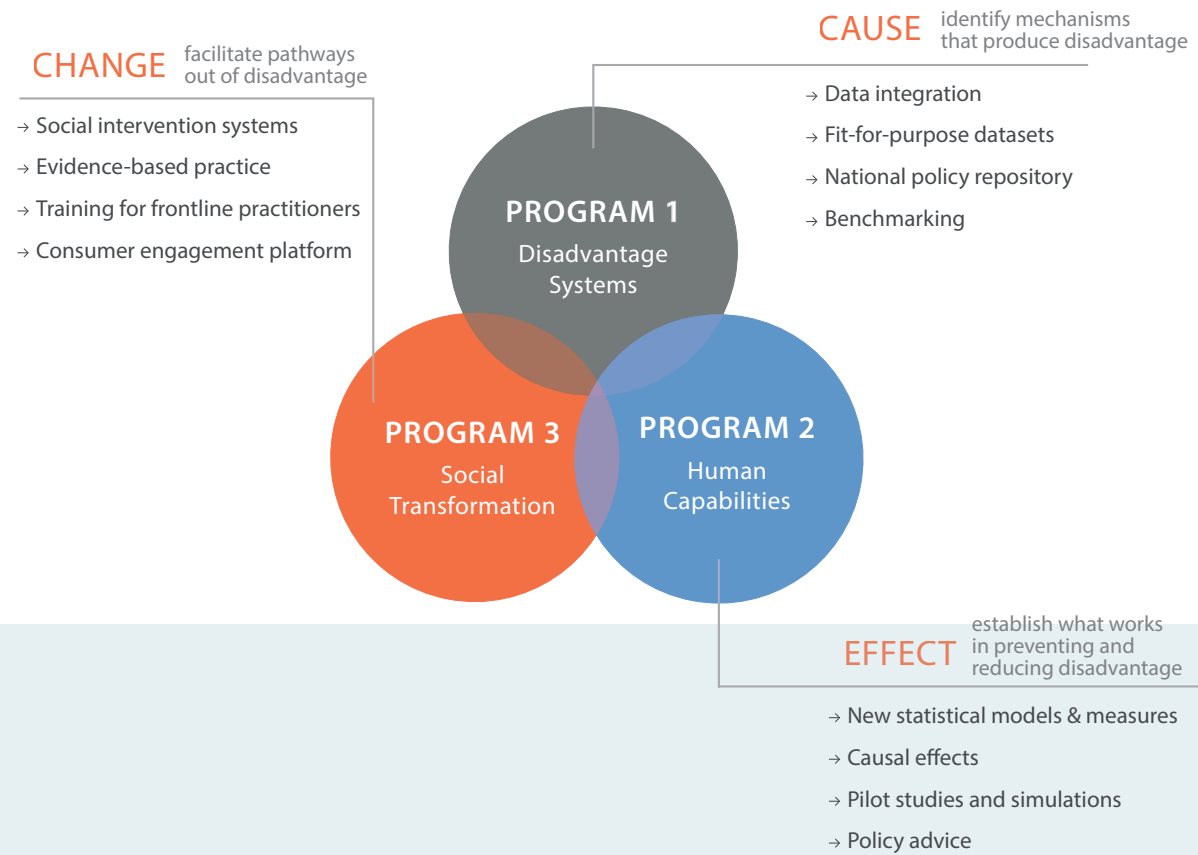
# HIGHLIGHTS





> research and government partnerships

# Life Course Centre



## BREAK THE CYCLE OF DISADVANTAGE

The Australian Research Council (ARC) awarded \$20 million in funding for the ARC Centre of Excellence for Children and Families over the Life Course (Life Course Centre) in December 2013.

The Life Course Centre research, which will be hosted by ISSR, will focus on reducing inter-generational transmission of disadvantage in Australia and internationally.

The Centre will tackle the problem of deep and persistent disadvantage, which is characterised by social and economic poverty within families and across generations despite

overall improvements in the broader society. UQ President and Vice-Chancellor Professor Peter Høj and Deputy Vice-Chancellor (Research) Professor Max Lu congratulated Professor Baxter and the UQ team and partners.

**“The Life Course Centre has outstanding potential to unlock the true promise of current and future generations of Australian children who are born into disadvantage through no fault of their own” Professor Høj said.**

“It will bring together some of the finest out-

comes-focused social scientists, whose work will be guided by data and by close collaborations with people who make policies and deliver services at the grassroots.

“This will lead to new opportunities for children and families who are currently caught in a welfare cycle, and will inform more effective targeting of welfare and charitable spending,” Professor Høj said.

Professor Lu said the funding decision was “a tremendous show of confidence by the Government and the ARC in Australia’s top-tier social scientists”.

Institute Director Professor Mark Western says the Life Course Centre will benefit from proven partner relationships that will help facilitate tangible research outcomes.

**“We have long-standing collaborative linkages, some of which go back over 10 years, to the peak government and non-government agencies who have partnered with us in the Centre and who have come to us asking for this work to be done,” Professor Western said.**

Professor Janeen Baxter – who is jointly appointed with ISSR and The School of Social Science and a world-leading expert in life course studies – will be the Centre’s Director.

“The Centre will advance research to reduce the transmission of disadvantage within families and across generations and translate research to find solutions to disadvantage,” she said.

**“We can see the economic costs of disadvantage in rising welfare expenditure. The government spent \$132 billion last year on social security payments. That’s almost 10 per cent of GDP,” Professor Baxter said.**

The Centre will collaborate with three Australian universities – the University of Western Australia, the University of Melbourne, and the University of Sydney – as well as ten international universities, five Australian government agencies and two non-government organisations.

An impressive 32 Chief Investigators, Partner Investigators, and Associate Investigators from a variety of disciplines, including so-

ciology, economics, criminology, psychology, epidemiology and statistics; and 21 Partner Organisations will be the Centre’s collaborators (see Partnerships Diagram).

University, government and community partners will provide a further \$8 million of additional support to the Centre.

“Together we will deliver the evidence base to help state and federal governments develop policy and program initiatives that work to reduce disadvantage,” Professor Baxter said.

“Our NGOs will help us to develop and deliver social interventions, facilitate end-user feedback, and provide practitioner advice and support on engaging hard-to-reach populations,” she said.

“But the human costs are also staggering. When disadvantage persists, people lose hope. Through the Life Course Centre, we aim to reduce the transmission of disadvantage and increase the opportunity for Australian children and families to live the lives they choose,” she said.

The Life Course Centre will be housed within ISSR and will formally begin operations later in 2014.

### Research partnerships

**9**  
Australian Chief Investigators

Janeen Baxter (UQ), Stephen Zubrick (UWA), Deborah Cobb-Clark (Melbourne), Mark Western (UQ), Lorraine Mazerolle (UQ), Matt Sanders (UQ), Colm Harmon (Sydney), Michele Haynes (UQ), David Lawrence (UWA)

**12**  
Australian and International Partner Investigators

Greg Duncan (UC Irvine), Miles Corak (Ottawa), Jean Yeung (Nat University Singapore), Rebekah Coley (Boston College), Adrian Raine (Penn), Jane Elliot (Institute of Education), David Weisburd (Hebrew University Jerusalem), Arnaud Chevalier (Royal Holloway), Orla Doyle (Uni College Dublin), Heather Laurie (Essex), Helen Rogers (Department of Social Services), Fadwa Al Yaman (Aust Institute of Health and Welfare)

**11**  
Associate Investigators

Guyonne Kalb (Melbourne), Chris Ryan (Melbourne), Kathy Edin (Harvard), Ariel Kalil (Chicago), Bobbi Wolfe (Wisconsin), Janet Currie (Princeton), David Farrington (Cambridge), Rob Sampson (Harvard), Larry Sherman (Cambridge), Fiona Steele (Bristol), Harvey Goldstein (Bristol)



preventing deep disadvantage: realising life’s potential  
ARC Centre of Excellence for Children and Families over the Life Course

< Queensland Government research collaboration

< Leading partnerships with universities



## Queensland Centre for Social Science Innovation

QCSSI was hosted by the Institute for Social Science Research (ISSR) at The University of Queensland (UQ), with local nodes in the other participating universities: Queensland University of Technology, Griffith University, Central Queensland University and James Cook University.

The Centre was a partnership with the Queensland government and five Queensland universities to provide an evidence base for policy and programs for human services. It was jointly funded by the Queensland Government and the Universities for an initial period of five years. The Government's five year funding commitment of \$5 million was matched by the universities, who provided another \$5 million.

**In an Australian first, QCSSI undertook applied research into projects and areas that the government and university partners jointly determined.**

In addition to delivering research that would contribute to improvements and efficiencies in human service delivery across the state, the Centre began to pioneer new ways of working across government and universities in areas of research and policy relevance to both sectors.

The Centre was intended to promote ongoing deep collaborations between the Queensland

Government and Queensland researchers to undertake research and build research capacity and capability in areas relating to social policy and human services delivery.

QCSSI developed a world-class social science research program and achieved these benefits through close collaborative relationships with partners.

In December 2013 the final report of QCSSI released, which marked the closure of the centre. Key Centre participants are currently using the experiences and lessons of the Centre as a basis for developing new partnerships, collaborative relationships and joint ventures with parties outside Queensland.

**Through the collaboration ISSR has benefited from:**

1. Stronger collaborative relationships between social science researchers and research entities
2. Models of Centre governance and operations that can be adopted in new collaborative research
3. A cohesive program of research and evidence in areas of direct policy relevance for human service delivery
4. Professional development of Queensland social scientists with respect to engagement and collaboration with the State government.

### Projects funded by the Centre and their outcomes:

#### Reimagining Learning Spaces

Examined how design of learning spaces can improve student's engagement using school libraries as case studies.

#### Wet Tropics Community Resilience Indicators

Analysed community resilience as a basis for facilitating and securing regional climate change adaptation across the Wet Tropics, Northern Gulf, Cape York Peninsula and Torres Strait sub-regions of Far North Queensland.

#### Crisis Support and Community Resilience

Identified and evaluated local and institutional resources that contribute to community resilience after a crisis or disaster.

#### Systematic Review of Aboriginal Health and Wellbeing

This project focused on developing an evidence base of what interventions work, with a focus on child and maternal health since 1992 in Indigenous Australians.

#### Indigenous Parenting Training Processes

Assessed the effectiveness of the Triple P professional training process in preparing Indigenous service providers to deliver two intensive evidence-based behavioural family interventions.

#### Planning Coordination and Cyclone Resilience

Outlined ways to improve disaster resilience in advance of disasters and to help speed up recovery by a planned approach to transport and land use, and examined the importance of transport planning in coastal areas in Queensland at risk of cyclones, especially in light of increased cyclonic activity.

#### School Engagement and Connectedness

Examined how music technology can work to improve Indigenous health and well-being and school engagement and connectedness.

#### School Design and Educational Outcomes

Examined the impact of school design, infrastructure and refurbishment on educational

outcomes, using analysis of existing administrative data collected by relevant agencies in the Queensland government.

#### Spontaneous Volunteering during Natural Disasters

Drew on a sample of over 80 000 people who volunteered during the January 2011 Queensland floods, to examine characteristics and motivations of spontaneous volunteers, how this could potentially translate in the future and what systems need to be in place to encourage continued civic engagement.

#### Participatory Community Singing

Evaluated the success of a program designed to improve the health outcomes of Aboriginal and Torres Strait Islander with mental illness

and chronic disease through community-based singing activities.

#### Post-Disaster Parenting Support

Proposed a guide for future planning around Queensland families' preparedness for and recovery from disasters and emergencies with a focus on children and adolescents.

#### Community Sport Organisations Disaster Recovery

Developed strategies for community sport organisations that are effected by natural disasters in Queensland. Many suffered in the recent natural disasters with loss or damage to their infrastructure and the associated loss of opportunities for sport, social cohesion, sense of community, identity and inclusion that these facilities provide.

**QCSSI**  
Queensland Centre for Social Science Innovation





> industry, government  
and NGO partnerships

## Partnerships and linkages

ISSR researchers and panelists at a symposium on December 4, 2013 to mark the conclusion of a major ARC linkage grant, "Utilisation of Social Science Research"

**Back row:** (left to right) Dr AJ Lanyon (ABS), Dr John Dungan (DETE), Dr Kate Liley (Goodstart Early Learning), Ms Sally Pritchard (ABS), Ms Monica Pfeffer (ANZSOG), Dr Alex Dordevic (DHS), Professor Brian Head (ISSR), Professor Mark Western (ISSR), Dr Adrian Cherney (UQ), Ms Dawn Schofield (Qld Health), Ms Maureen O'Connor (Qld Health), Ms Emily Cross (Qld Health), Professor Wayne Hall (UQ). **Front row** (left to right): Professor Karen Healy (UQ), Professor Anna Stewart (Griffith University), Dr Mark Lynch (UNE), Ms Linda Apelt (ISSR), Professor Paul Boreham (ISSR).

### Partners of the 2013 linkage grants

Partner	Collaboration focus
The Smith Family	Identifying what works to improve educational outcomes for disadvantaged young people and improving knowledge about the cause of inequality in the Australian education system.
Department of Social Services	Building new data about Australian mothers' engagement in the workforce, including the impact of leave arrangements, child care and job characteristics.
The Social Research Centre	Developing dual frame sampling methods and other statistical techniques to improve the accuracy of telephone surveys that traditionally rely on landlines and leave out mobile-only households.

### BOOST IN 2013 WITH \$1.17 MILLION FOR RESEARCH TO BENEFIT COMMUNITY AND GOVERNMENT

In 2013 the Institute was successful in gaining Australian Research Council (ARC) Linkage Project grants of almost \$1.17 million, continuing a strong track record of building relationships and partnerships.

ISSR Director Professor Mark Western said he congratulates the Institute's researchers on the 2013 ARC Linkage round and the opportunity it provides to deepen relationships with our partners.

"UQ received 30 grants in 2013 with a total worth \$11.9 million. ISSR's success was 10%

of the university's success in number of grants and in research income," he said.

**Partnerships with government, human services charities and other organisations are fundamental to the scope and mission of Institute research.**

The Institute is committed to research that adds value to the community and forms expert teams to conduct applied research in order to improve the effectiveness of public policy and service delivery.

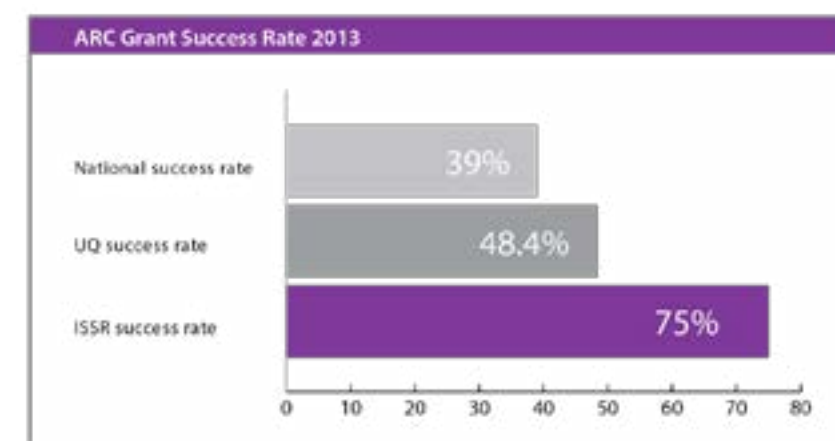
The following projects received ARC grants in 2013:

- "Enhancing social research in Australia using dual-frame telephone

surveys", partnering with The Social Research Centre, awarded \$166,022.

- "Enhancing mothers' engagement with the workforce in the preschool years", partnering with the Department of Families, Housing, Community Services and Indigenous Affairs, awarded \$438,832.
- "Learning catalysts: improving educational outcomes for disadvantaged children" partnering with the Smith Family, awarded \$559,000.

The table, on adjacent page, lists the key partners of the linkage grants and outlines the collaboration focus.





< commercial professional development  
courses in statistics

# Industry skills development



## ONE YEAR OF MFSAS

The Methods for Social Analysis and Statistics (MFSAS), short-course statistics program is offered by ISSR to improve professional statistical analysis in social research.

The program's target audience is public sector professionals in government departments, agencies, NGOs and university staff and post-graduate students with a desire to learn more about methods for social analysis to assist in translating scientific social research into public policy outcomes.

Professor Michele Haynes, a statistician and leader of the Research Methods and Social Statistics Program at ISSR, developed the program.

"It's essential for research on social and economic change to draw evidence from many of the large quantitative longitudinal datasets available," she said.

Much of Professor Hayne's work with social scientists is to demystify the process and to equip social researchers with the necessary skills to confidently manage and analyse longitudinal data.

MFSAS is a series of contextually relevant

training modules aimed at bridging the gap between those who "do" statistics and those who "do" social policy.

Professor Haynes says there is a need to bridge the gap between those who conduct social research and those who develop social policy, working in policy areas but without the necessary training in research methods and data analysis.

The scope of MFSAS has broadened to include modules for those individuals who have a basic understanding of research and data and wish to progress to more advanced skills.

"MFSAS was born out of the need to develop contextually appropriate research and statistics training, which deviates from the traditional, academic approach of teaching statistics, which can be quite overwhelming for those without a background in the area," she said.

"As such, MFSAS was designed to take a

problem-focused approach to teaching research and statistics. Content of the modules ranges from introductory information about the basics of social research to advanced statistical methods, catering for people at all stages of the knowledge and experience spectrum," Professor Haynes said.

See the website (homepage at right) for more information, [www.issr.uq.edu.au/mfsas](http://www.issr.uq.edu.au/mfsas)



## MFSAS Course Structure

Stream A - Introductory	Stream B - Applied	Stream C - Advanced	Stream D - Leximancer
A1 Understanding Data	B1 Recognising Differences	C1 Modelling Cross-Sectional Data	D1 Introduction to Leximancer
A2 Gathering Quantitative Data	B2 Understanding Relationships	C2 Multilevel Models: Clustered & Longitudinal Data	D2 Leximancer Next Steps
A3 Gathering Qualitative Data	B3 Recognising Changes	C3 Longitudinal Data Analysis: Intro & Panel Regression	D3 Leximancer Masterclass
	B4 Systematic Reviews		

< providing industry skills development





< evidence-based policy

< identifying how research impacts policy

## Bringing academic research to public policy

### LINKING UNIVERSITY RESEARCH WITH POLICY MAKERS IN GOVERNMENT

2013 marked the completion of a landmark Australian Research Council (ARC) linkage project, "Utilisation of Social Science Research in Policy Development and Program Review" in which extensive case studies of academics and policy experts identified the process, limitations and blockages of academic research translation to policy staff on the ground.

The project, which started in 2010, was led by the Institute's Policy Analysis Program Leader, Professor Brian Head. It began an important dialogue with policy staff in the public sector, while also forging important relationships. The research broadly examined how policy-relevant research was communicated and translated.

Through extensive interviews and case studies of both academics and policy staff the project was able to shed light on just what is the impact of social science research on policy decision-making in Australia – an area about which little was previously known, other than in an anecdotal way.

The team conducted two major surveys of Australian academic social scientists and policy-relevant personnel in 21 agencies at both the state and federal level. In addition, over 200 in-depth interviews were completed with a selection of academic respondents and senior policy personnel.

"Communicating research to the public sector agencies is fundamental to developing evidence-based policy," Professor Head said.

"We aim to enhance the better use of evidence in social policy and identify ways to improve research partnerships between academic social scientists and public and private sector agencies."



Caption: (Above) Panelist Dr Mark Lynch; (Left Top) Audience and panel at the symposium entitled, "Evidence-based Policymaking: Can we improve the impact of research?" and: (Bottom) Partners from government and UQ of the "Utilisation of Social Science Research in Policy Development and Program Review" project

(Above, left to right) Dr Jenny Povey (ISSR); Professor Paul Boreham (ISSR); Dr Adrian Cherney (UQ); Dr AJ Lanyon (ABS); Dr John Dungan (DETE); Ms Maureen O'Connor (Qld Health); Dr Alex Dordevic (DHS); Ms Dawn Schofield (Qld Health); Dr Garth Britton (ISSR); Ms Emily Cross (Qld Health); Professor Brian Head (ISSR); Ms Sally Pritchard (ABS); Ms Jenny Bell (ISSR); Ms Michele Ferguson (ISSR)



## < research translation

### SNAPSHOT OF SURVEY FINDINGS OF POLICY-MAKERS AND ACADEMICS\*

#### Policy-makers

94% - Indicated that the internet is an important means of obtaining research information

82% - Reported difficulties in accessing full-text versions of academic articles and reports

81% - Agreed that the policy-making process is driven by budgetary considerations

71% - Perceived that urgent day-to-day issues take precedence over "long-term" thinking

71% - When using academic research, considered it a high priority that the research findings are unbiased

61% - Reported that in the last 12 months they had written a policy-related document that drew on academic research

#### Academic researchers

84% - Agreed that academic reward systems do not adequately recognise dissemination of work to non-academic end-users

81% - Indicated that the amount of time needed to invest in coordinating the work between different partners in research collaborations is potentially problematic

80% - Found there are different research orientations between academics and external partners

77% - Agreed that research partnerships have provided them with opportunities for their research to have an impact on policy and practice

73% - Agreed that the academic requirement to publish in peer-reviewed journals inhibits a focus on policy and practitioner audiences

\*Strongly agree/agree or important/very important

### Evidence-based Policymaking Symposium

A symposium, "Evidence-based Policymaking: Can we improve the impact of research?", held at the close of 2013 marked the conclusion of the project. It was attended by social policy professionals from government agencies and academic researchers and discussed bridging the divide between academic research and policy.

Opening the event, UQ Senior Deputy Vice-Chancellor and President of the Academy of Social Sciences in Australia (ASSA) Professor Deborah Terry welcomed the partners and experts sitting on the three panels.

"Uptake of evidence-based research is important in the context of the challenges of economic instability, climate change, ageing population and escalating health care costs.

"The symposium is a great first step as we're good at talking to each other but we have to present these results in a format that shows benefit to end-users," Professor Terry said.

See story on page 34 on Professor Head's award of a highly prestigious Discovery Outstanding Researcher Award (DORA) fellowship to further build research partnerships and design strategies for improving the use of research in the policy process.



Symposium audience (top) and (above) Dr John Dungan (Department of Education, Training and Employment); Dr AJ Lanyon (Australian Bureau of Statistics); Ms Maureen O'Connor (Qld Health); Ms Emily Cross (Qld Health)



## < Mentoring new generations of researchers



## Institute pioneers continue contributing

Leading professors, Paul Boreham and Andrew Jones, who retired within 18 months of each other, are to continue their contribution to the Institute through their Emeritus Professorships and their role as respected mentors.

Both hold degrees from UQ and were later to lead UQ Schools: Professor Boreham, The School of Political Science and International Studies and Professor Jones, the School of Social Work and Social Policy.

They were instrumental in the establishment and growth of the Institute, with Emeritus Professor Boreham in the role of Deputy Director (Research) of ISSR and Emeritus Professor Jones as Research Program Leader of Social Wellbeing, Health and Housing.

Emeritus Professor Boreham and Professor Mark Western were co-directors of the UQ Social Research Centre (SRC), which was a precursor of ISSR and established in 2007.

Professor Boreham's research on employment and labour market analysis and social and economic change has been supported by 20 Australian Research Council and 25 other national competitive grants worth in excess of \$8million.

Emeritus Professor Boreham, who retired in July 2012, not only played a leading role as the Institute's Deputy Director from 2009-2012, but his research findings also contributed to the work of several Royal Commissions, public policy development and organisational change in the public and private sectors.

As a leading sociologist and political scientist and with six years as Foundation Head of UQ's School of Political Science and International Studies he was called on to serve as a Director of the Australian Trade Union Training Authority and a Consultant to the Royal Commission into Aboriginal Deaths in Custody.

On top of that, he made a direct contribution to Australian sociology and political economy and published eleven books and more than 120 journal articles, chapters and research reports. He also mentored 35 successful doctoral candidates of whom ten now hold professorial positions at major Australian and international universities.

Some key dates for Emeritus Professor Paul Boreham, :

- A member of the UQ Research Committee (2009-2011)
- Deputy Director and Director of Research, Institute for Social Science Research (2009-2012)
- Director, University of Queensland Social Research Centre (2005-2009)
- Foundation Head, School of Political Science and International Studies (1999-2005)
- Head of Department of Government (1995-1999)
- Editor, *Journal of Sociology* (formerly *The Australian & New Zealand Journal of Sociology*) - Journal of the Australian Sociological Association (1982 to 1985; 1989; 1997 to 2000)
- Chief Investigator of the Australian Research Council Centre of Excellence in Policing and Security (2008-2010)
- A member of the UQ Academic Board (1995-2012)

Emeritus Professor Jones has an extensive record of mentoring, community service, external engagement and partnership building, securing research contracts and applied and theoretical research into housing and homelessness.

He was a member of the small group of senior academics who provided leadership in the establishment of ISSR. He brought a vision of a research institute with a strong emphasis on public policy analysis and program evaluation and research engagement with policy development.

He led UQ's housing policy research through his leadership of the UQ Centre of the Australian Housing and Urban Research Institute (AHURI) and he also led the Social Wellbeing, Health and Housing Research Program at ISSR until his retirement in December 2013.

Under his leadership the University has been one of the most successful recipients of AHURI research funding with research funding of approximately \$4million received since 2002.

He was a Chief Investigator on research grants and research contracts worth over \$6 million including being the lead Chief

Investigator for UQ's National Homelessness Research Partnership (\$1.33 million) with FaHCSIA from 2010-2013.

Professor Jones has published numerous book chapters, journal articles and commissioned research reports. His applied research has contributed to policy development in areas such as housing, childcare and homelessness in Queensland and beyond.

Emeritus Professor Andrew Jones:

Research Program Leader, Social Wellbeing, Health and Housing, ISSR (2009-2013)

Director, UQ Research Centre of the Australian Housing and Urban Research Institute (2002- 2012)

Head, School of Social Work and Social Policy (2000-2003)

His undergraduate textbook, *Working in Human Service Organisations* was a standard text in most schools of social work in Australia from 1992-2010 (first published 1992)

Academic in School of Social Work and Social Policy, 1982-2000, including program leader of Masters of Social Welfare Administration and Planning

Emeritus Professors Paul Boreham and Andrew Jones (from left)

# EVENTS





< engaging with international research leaders



## Race, Families and Inequality Symposium

### BRINGS LEADING INTERNATIONAL INEQUALITY SCHOLARS TOGETHER

The Institute brought together local and international experts at a symposium entitled, "Race, Families and Inequality" in March 2013.

Scholars from the Institute joined international scholars from the prestigious Harvard and Brown Universities to present research findings that shared the broad theme of inequality.

The US scholars' research showed how the threads of inequality weave a tight web into all aspects of an individual's and a family's life: school education, youth issues, housing, imprisonment, crime, poverty and diminished life opportunities.

Institute Director Professor Mark Western gave the opening address at the one-day symposium, "Race, Families and Inequality", welcoming Professor Kathryn Edin, Professor Bruce Western and Assistant Professor Matt Desmond from Harvard University and Professor Glenn Loury from Brown University.

Professor Western said the Institute was proud to host the symposium. "I'd like to welcome and thank our very distinguished international visitors. Much of the work we do also grapples with trying to understand, describe and explain the causes of inequality and importantly ways to address inequality," Professor Western said.

Like the US and other English speaking countries, said Professor Western, Australia experienced declining inequality throughout much of the 20th century coupled with a take-off in inequality from the 1980s that has progressively worsened.

"Whether it's the research we do on topics such as housing and homelessness, Indigenous issues, third party policing, education and employment and family dynamics - inequality is a central theme in the work we do," he said.

"Our primary focus is Australia and the region but it's fitting that we have an eminent group of scholars to talk to us about the United States. There are some interesting similarities between our two countries," Professor Western said.

"Like American scholars Australian researchers have also recognised families as centrally involved in processes of inequality and inequality outcomes. Race profoundly frames inequality in the US - Indigenous status does so in Australia," he said.

The day's symposium concluded with a panel discussion, where leading Institute research staff joined the international scholars for an open-floor discussion. Professors Lorraine Mazerolle, Paul Memmott and Bill Martin and Dr Cameron Parsell from the Institute were on the panel.

### Speakers and their topics of address at the symposium



**Bruce Western** is Professor of Sociology and Director of the Multidisciplinary Program in Inequality and Social Policy at the Harvard Kennedy School of Government, "Trends in Income Insecurity Among US Children".



**Glenn Loury** is Merton P. Stoltz Professor of the Social Sciences, in the Department of Economics at Brown University, "The Responsibility of Intellectuals in the Era of Mass Incarceration".



**Kathryn Edin** is Professor of Public Policy and Management at the Harvard Kennedy School of Government, "Dignity and Dreams".



**Matt Desmond** is Assistant Professor of Sociology and Social Studies, Harvard University, "Mechanisms of Neighbourhood Selection: Why and How Poor Families Move".

see videos at <https://vimeo.com/issr>



Caption: Professor Lorraine Mazerolle, Dr Rebecca Wickes, Professor Mark Western, Dr Suzanna Ramirez (from ISSR) and Chief Superintendent Alistair Dawson



## Global Leadership Series



### BRINGING RESILIENCE RESEARCH TO ALUMNI AND THE COMMUNITY

In the wake of the natural disasters in South East Queensland in late 2010 and early 2011 researchers at the Institute were ideally placed to bring their research findings to the community through presenting their findings of a study into community resilience at UQ's Global Leadership Series in March 2013.

The event, entitled "Strong, Resilient Communities - What makes them tick?" was held at Brisbane's Custom House and attracted research partners from the police and local government, and alumni and members of the

public with interests and occupations in community resilience, mental health and education.

The Australian Community Capacity Study (ACCS) is a longitudinal study that began in 2005 and examined the characteristics and processes that lead to social problems in urban communities. The third wave of the survey was able to capture the same community but after the disasters of 2010-11, offering invaluable insights into what makes a community survive and cope better with a natural disaster.

Professor Lorraine Mazerolle, a criminologist, who leads the Policing and Security Research Program at ISSR and who also led the ACCS project, welcomed the alumni and community to the event and introduced the panel members – Research Fellow Dr Rebecca Wickes and Postdoctoral Research Fellow Dr Suzanna Ramirez from the Institute and Chief Superintendent Alistair Dawson of the Queensland Police Service.

**"In Australia (and internationally) understanding and enhancing community resilience is a high priority as people increasingly face significant environmental and national security challenges," Professor Mazerolle said.**

"It's how we get through these challenges of disasters and other challenges as individuals, communities, governments, institutions, agencies, and nations – that is the focus of our studies in resilience," she said.

ACCS comprises of three waves of survey data across 148 suburbs in Brisbane and one wave of survey data across 150 suburbs in Melbourne. Dr Rebecca Wickes also conducted a fourth wave survey across the 148 Brisbane suburbs during 2012 which focused on community resilience in Brisbane suburbs during the aftermath of the 2011 flood disaster.

"The timing of the Wave 3 survey was merely coincidental – we finished data collection in December 2010 – just a month before the floods occurred. This meant that for the first time we had baseline data from a general population on the capacity of communities before a disaster event," said Dr Wickes said.

"This provided a unique research opportunity that was beyond comparison anywhere in the world," she said.

**Chief Superintendent Dawson, who coordinated the whole of government response to disaster events across the state between December 2010 and February 2011 caused by Cyclones Tasha, Anthony and Yasi, said social capital in the face of disasters cannot be understated.**

"The value of a community's investment in itself is shown in its social connectedness – this is the key. The role of schools, government, business and community groups bonds in the community make for disaster resilient communities," he said.

It is the social support systems of neighbourhoods, family and community that provide mutual self-help he said. "Resilience influences the social capital which is a cornerstone of resilience," Chief Superintendent Dawson said.

**< bringing community resilience research to the community**

Professor Mazerolle







## RC28 conference

### RESEARCH IN MOBILITY AND INEQUALITY

Scholars from four continents met at UQ on July 16-19 to present their studies on social mobility, education, the labour market and inequality at the annual Conference of the International Sociological Association's Research Committee on Social Stratification and Mobility (RC28) hosted by the Institute.

In opening the four-day conference entitled, "New Horizons in Research on Stratification, Mobility and Inequality", Institute Director Professor Mark Western said ISSR was proud to be the host.

He said the RC28 conference of The International Sociological Association (ISA) is an important forum for international researchers to share ideas.

**"This research community deals with topics that are at the core of the discipline of sociology – inequality, stratification and mobility."**

"As we know these relate to fundamental social structures and processes that are central in all societies," Professor Western said.

"These core topics are increasingly being picked up by researchers in cognate disciplines, like economics, demography, education science, public health and social epidemiology – who now also claim these as their own. In fact we have representatives from some of those disciplines here today," he said.

Professor Western said he has been part of this research committee for approximately twenty years.

"In many ways the work of the people of this committee constitutes a large part of my intellectual reference group and defines the work I think is outstanding and the work I aspire to do," he said.

< leading sociology research community



## Book Launch

### BOOK LAUNCHES ON INTERNATIONAL POLICING

On 21 March, 2013, the Institute launched the book, Forging New Conventional Wisdoms Beyond International Policing: Learning from Complex, Political Realities. The book contributes to the knowledge of best practice in international policing and peacekeeping.

The UQ authors, Dr Bryn Hughes, Dr Charles T Hunt, and Jodie Curth-Bibb, have put forward alternative approaches to peacekeeping, capacity building, and monitoring and evaluation through presenting extensive research and three exhaustive case studies.

In giving the book launch welcome address Emeritus Professor Paul Boreham said it was a great pleasure to see the book emerge after extensive fieldwork and evaluation that was derived from a project he led five years earlier.

On this project, Emeritus Professor Boreham was the lead Chief Investigator and Institute Director Professor Mark Western was the Project Collaborator.

**"The book provides a critical addition to the current discourse on international policing. It develops an innovative perspective by conceptualising international policing as part of a much broader system of peace and capacity development initiatives."**

"After establishing the global context and historical evolution of police in peace operations, the authors recast some of the key assumptions and conventional wisdom that surrounds international policing.

"Examinations of the Rule of Law and Monitoring and Evaluation in peace and capacity building establish a solid foundation upon which the authors offer a convincing argument for a contemporary take on international policing and a new conventional wisdom about monitoring and evaluation practices in international peacekeeping," Professor Boreham said.

Dr Bryn Hughes was the project manager on an Australian Federal Police (AFP) funded research project which informs the book. He

has lectured on peacekeeping and peace and conflict studies and currently consults to Monitoring & Evaluation organisations.

**John McFarlane concluded the addresses with a first-hand account of his experiences with AFP peace operations in fragile states and recounted his experience in Timor Leste from 2004-2007 as a member of the Project Monitoring Team of the Police Development Project.**

Mr McFarlane, who before retiring in 1999, was the AFP's Director/Intelligence, said the book resonated with his experiences and felt it was a great contribution to the dialogue on international peacekeeping.

< contributing to international policing





## John Western Memorial Lecture

### LEADING SOCIOLOGY SCHOLAR PRESENTS LECTURE IN HONOUR OF FOUNDER OF UQ SOCIOLOGY

More than 90 people attended a public lecture on August 1, 2013, to commemorate the contributions of the late Emeritus Professor John Western AM who is regarded as the founder of the sociology discipline at The University of Queensland (UQ).

The biennial John Western Memorial Lecture was presented by leading international sociology scholar Professor Erik Olin Wright from the University of Wisconsin-Madison whose research has strong links with sociology at UQ and the late Professor Western.

In the 1960s Professor Western joined UQ where he later built the sociology discipline, supervised more than 50 PhD students and spread his passion for research and teaching in political behaviour, mass media and the sociology of work, crime and education.

UQ Senior Deputy Vice-Chancellor Professor Deborah Terry said she was pleased to hon-

our the life of a distinguished scholar widely regarded as the founding father of sociology in the biennial lecture – hosted by the Institute for Social Science Research (ISSR) and the UQ School of Social Science.

"In 1970 John was appointed as the first professor of sociology, a position he held until he retired in 1996. He went on to make many significant contributions publishing more than 50 books, monographs and commissioned reports, 70 book chapters and 120 journal articles," she said.

**"He built one of the largest and most successful sociology departments in the country here at UQ. He was a fellow of the Academy of Social Sciences in Australia (ASSA) and in 2009 he became a member in the general division of the Order of Australia for his contributions to education and sociology,"** Professor Terry said.

"Professor Western's efforts in the social sciences transcended borders well before that was the norm in academia and well before we talked about internationalisation and globalisation," she said.

Professor Terry said the legacy of Professor Western, who sadly passed away in January 2011, also continues with his sons – Professor



Mark Western who is the Director of ISSR and Professor Bruce Western, a sociologist at Harvard University.

"Both John Western and Erik Olin Wright have shared commitments to sociology that make a difference and have both directly affected thousands of students and scholars through their generosity and willingness to teach and share what they know," Professor Mark Western said.

Since 1992 Professor Wright has directed The Real Utopias Project which explores a wide range of proposals for new institutional designs that embody emancipatory ideals. In 2010 his landmark book *Envisioning Real Utopias* was published which outlines a framework for "real utopias".

### < engaging community in sociology tradition

**"Real Utopias is an attempt to provide us with theoretical tools to seriously interrogate the possibility of alternatives, to maintain deep and unapologetic commitment to emancipatory ideals while at the same time being equally committed to creating real institutions that actually work,"** Professor Wright said.

"We can't be content with the idea that, where there is a will there is a way, says Professor Wright. "Instead, we need 'real utopias'."

*Caption: Professor Erik Olin Wright from the University of Wisconsin-Madison presenting the biennial John Western Memorial Lecture*

– that search for alternative institutions that embody our deepest aspirations for a just and humane world," he said.

"We need to combine visionary idealism of alternatives with an equally committed desire to build institutions that actually work, are sustainable and solve the problems which we see," he said.

Professor Wright refers to this as "emancipatory social science" and outlined four principle "tasks" in his framework.

"The first task is establishing the moral foundations for an emancipatory social science – what are the ideals to which we aspire? The second task is diagnosis and critique – evaluating existing institutions in light of those moral foundations," he said.

"The third is the elaboration of alternatives that better realize the moral foundations that are found wanting through the diagnosis and critique of existing institutions and finally, the fourth, is elaborating the theory of transformation which tells us how to there from here," Professor Wright said.



# Awards



## DORA awarded to Professor Head



### RESOLVING COMPLEX POLICY PROBLEMS

Professor Brian Head won a highly prestigious Discovery Outstanding Researcher Award (DORA) fellowship for a new project he will lead that will examine how social science research can help resolve complex policy problems.

The Australian Research Council (ARC) DORA fellowship was announced on November 8, 2013 – coinciding with the concluding symposium outlining findings from an earlier ARC linkage project, [Utilisation of Social Science Research](#).

The three-year Discovery Project that Professor Head will lead, entitled, 'Resolving Complex Policy Problems - The Role of Social Science', begins in February 2014. It will build upon the research findings of the Utilisation of Social Science Research project.

The new project will show how social science research can enhance policy decision-making on complex social issues and problems facing government agencies and aims to develop new approaches to how social science researchers demonstrate 'value' and benefits to government and other partners.

The project will investigate complex policy case-studies to develop richer explanations of how social research findings could be more fully utilised in resolving complex problems and enhancing government decision-making.

"This is a great project for the Institute", said Professor Head, "because it builds on our efforts to produce policy-relevant research, and to make best use of high quality analysis. We have found in previous projects that building bridges between the research and policy communities is essential. Working with decision-makers on complex problems can help to demonstrate the value of the social sciences".

< advancing use of social science in policy

## Joan McCord Award for Professor Mazerolle

### OUTSTANDING CONTRIBUTION RECOGNISED

Leading UQ criminologist and Institute Policing and Security Program Leader Professor Lorraine Mazerolle is the 2013 recipient of the Joan McCord Award for outstanding contributions to experimental research, policy and practice, and for developing the experimental careers of younger colleagues.

Professor Mazerolle is highly regarded for her experimental criminology research, leading a strong team of talented, multi-disciplinary researchers at UQ – and for her collaborations with policing and government authorities to improve criminal justice practices.

Professor Mazerolle said she was delighted to hear that she is the 2013 recipient of the award and was proud to follow in the footsteps of Joan McCord, a pioneer of experimental criminology who wasn't afraid to publish controversial findings.

"I am deeply humbled to be the 2013 recipient of the award. The award offers me a chance to showcase the experimental work of my team at UQ – especially my experi-

mental colleagues Drs Sarah Bennett, Emma Antrobus and Angela Higginson – who are all deeply embedded in working with me to advance experimental criminology here in Australia," she said.

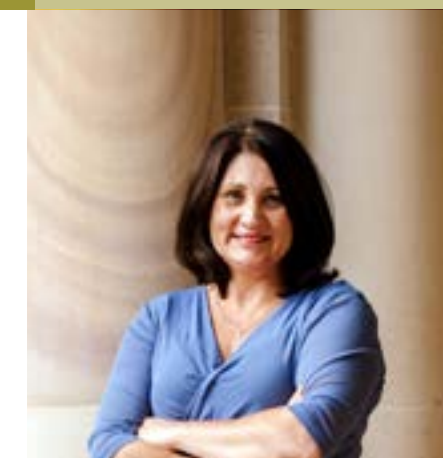
"Joan was always on the front foot in making sure the results – good and bad – were published widely, in academic, media and industry outlets," Professor Mazerolle said.

According to Professor Mazerolle, Joan was a perfectionist, disliked sloppy science and always made sure her work left no stone unturned.

"Like Joan, I truly believe that my team at UQ go that extra mile to ensure scientific integrity underpins everything we do. They are passionate and spirited scholars and I am honoured to have the opportunity to lead the team at UQ," Professor Mazerolle said.

Professor Mazerolle led the Queensland Community Engagement Trial (QCET) that surveyed 21,000 drivers in 60 stationary Random Breath Testing operations in Queensland and found the encounter was far more successful if the police adopt, what is termed, "procedural justice" techniques of interaction with the public.

The Queensland Police Service (QPS) is actively considering how the results of the QCET



experiment might be used in other areas of police engagement with citizens, particularly in highly volatile encounters that generate a lot of complaints.

The trial is being replicated in South Carolina in the United States and in Turkey, New Zealand and Scotland.

Professor Mazerolle is currently leading the evaluation of Project ABILITY, which is an intervention program aimed at reducing truancy and anti-social behaviour among at-risk youth.

The evaluation of the ABILITY trial is funded by Professor Mazerolle's ARC Laureate Fellowship and will evaluate "Third Party Policing" (TPP), where the police, family, school and government authorities all collaborate in an effort to reduce the level of truancy and anti-social behaviour of the youth involved.



# International



The Australasian Chapter of the International Society of Evidence Based Policing was launched in April 2013, see full story on page 42. Photo shows group from the one-day policing masterclass that preceded the event.





Map showing collaborating countries  
(major collaborations in bright red)

## BROAD ACTIVITY PROFILES



# Engagement overview



RC28 conference, see story page 28

## STRONG ROLE IN LEADING, NETWORKING AND COLLABORATING INTERNATIONALLY

The Institute demonstrated very powerfully in 2013 its international linkages in research on inequality and sociology through two landmark events, the Race, Families and Inequality Symposium (see page 18) that brought world experts in inequality research to the University to present their ground-breaking research and hosting the international sociological conference, RC28 (see page 28).

The Institute began international auditing of activities in 2012 and examined the categories in the table below.

Caption: The table above shows the primary countries the Institute is engaged with. The world map shows the countries with high levels of engagement with the Institute in bright red and minor engagement in burgundy.

Top 10 Universities	Interactions
University of Cambridge	6
University of California, Irvine*	6
Utrecht University	6
Oxford University	5
Harvard University	4
University of Arizona	4
University of Washington*	4
McGill University	4
University of Essex	4
Erasmus University	3

Top 5 Non-university institutes/associations	Interactions
American Society of Criminology	10
ISA	8
American Sociological Association	4
NZ Police	4
Campbell Collaboration	3

## International Visitors

**Noah Uhrig** from the Institute for Social & Economic Research, University of Essex, presented seminar, "Measuring employment in panel surveys: A comparison of reliability estimates in HILDA and BHPS". (February 2013)

**Professor Leslie W. Kennedy**, Rutgers University School of Criminal Justice (SCJ) and Director of the Rutgers Center on Public Security presented seminar "Crime Forecasting Using Risk Terrain Modelling". (March 2013)

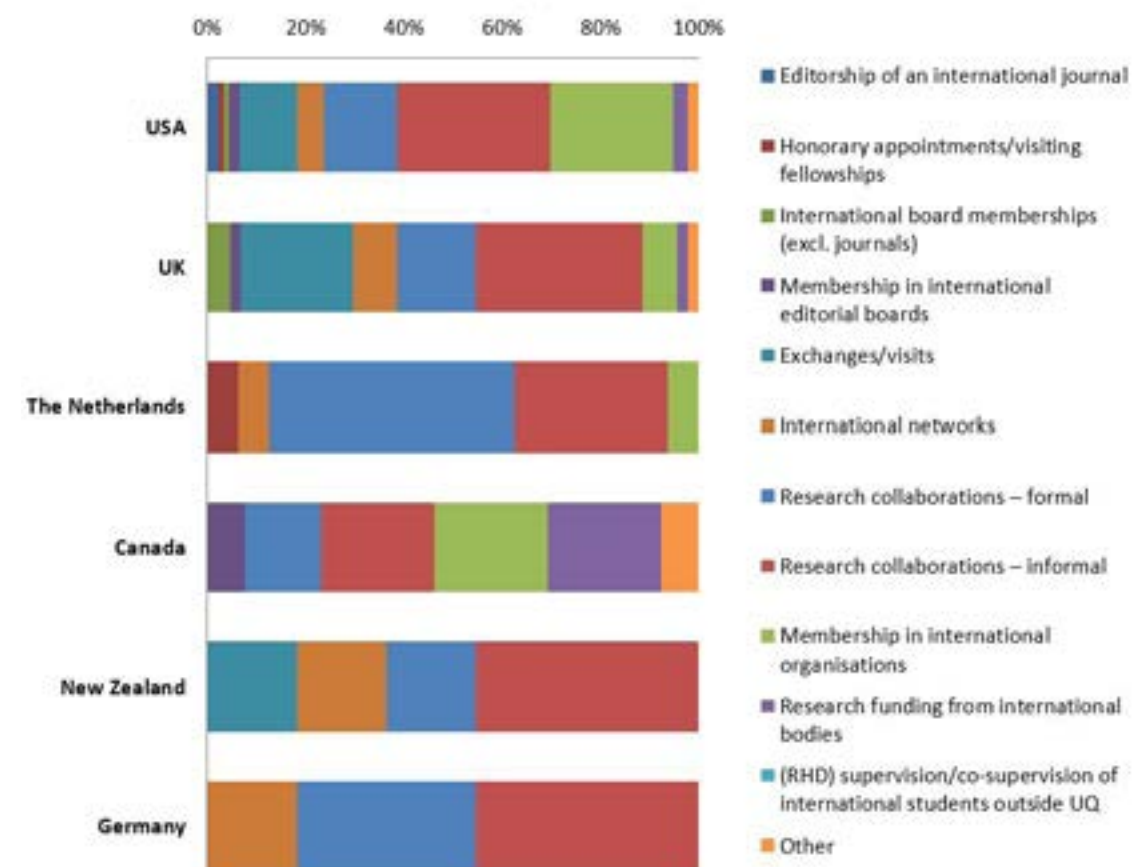
**Professor Robert Crutchfield** from the University of Washington delivered a seminar on his research findings on the connection of crime and unemployment, "The Employment Crime Connection". (March 2013)

**Professor Erik Olin Wright** a distinguished Professor of Sociology from the University of Wisconsin-Madison. Erik ran a one day speed dating Master class for PhD students and a 2 day intense mini-course on his book "Envisioning Real Utopias" and presented the John Western Memorial Lecture. (July 2013)

**Anne-Rigt Poortman**, associate professor at the Department of Sociology at Utrecht University, was a visiting scholar and presented the seminar, "Legal arrangements in cohabitation and marriage". (July 2013)

**Trude Lappegård**, a senior researcher at the Research Department in Statistics Norway presented seminar, "Demographic consequences of Nordic family policy; evidence from administrative data". (August 2013)

## Activity profiles for top 6 countries





< promoting evidence-based  
policing theory and practice

< leading international  
collaboration

## New Australasian society for evidence-based policing

### A CHAPTER OF EVIDENCE-BASED POLICING FORMED.

ISSR criminologist and Program Leader Professor Lorraine Mazerolle announced the formation of the Australasian chapter of the acclaimed Society for Evidence-Based Policing at a Brisbane event in April 2013, which was attended by senior Australian and international police and internationally renowned academics.

The Australasian Chapter of the International Society of Evidence Based Policing will focus on improving policing practices through promoting the use of evidence-based research.

"The Society brings together police officers from around the world who are committed to making sure that police resources are used effectively and efficiently.

"In times of austerity, Australian and New Zealand police, like their overseas counterparts, need to ensure they carefully allocate their scarce resources on proven interventions that have been shown, through the careful execution of field trials, to reduce crime and disorder and improve quality of life."

Running field experiments to test the effectiveness of police practices is not easy says Professor Mazerolle.

"Forging working partnerships between police and trained experimental criminologists ensures that a test of police practice is scientifically rigorous," she said.

Assistant Commissioner (AC) Peter Martin of the Queensland Police Service was elected to the position of inaugural Chair of the Society and will be the Australasian representative on the Executive of the UK based Society.

AC Martin recently led a field trial, in collaboration with Professor Mazerolle's research team, to improve the quality of police-citizen encounters during random breath tests.

"I am honored to be elected to serve on the Executive and be part of an outstanding team of senior police that is dedicated to ensuring that Australasian policing is engaged with running field trials and committed to best practice interventions," AC Martin said.

The evening, which culminated in the formation of the Society, was preceded by a one-day masterclass, Experiments in Policing, which focused on identifying potential collaborations for policing experiments.

The Masterclass was attended by Professor Mazerolle's team of UQ researchers, 40 key officers and police agency researchers from Australia and New Zealand and international colleagues and police experts from the United Kingdom and the United States.

"Building new capacity for partnerships between police and experimental criminologists was the focus of the Masterclass. The class worked together to design five new police trials to test police effectiveness in dealing with alcohol violence, traffic offences and disorder problems in Australia and New Zealand," Professor Mazerolle said.

The Masterclass was funded by Professor Mazerolle's prestigious, five-year, multi-million dollar Australian Research Council (ARC) Laureate Fellowship that was awarded, in part, to support Professor Mazerolle's efforts to build the capacity for experimental research in policing throughout Australasia.

"As part of this five-year fellowship, my team and I aim to build the capacity for experimental research in Australia using Randomised Controlled Trials (RCTs) as a method to assess police effectiveness and facilitate the adoption of evidence-based policy and practice," she said.

Peter Neyroud from University of Cambridge and Professor Anthony Braga from Harvard University (above) and Professor Mazerolle (right)





# RHD STUDENTS

## < Research leadership



## PhDs graduate

In 2013 thirteen PhD candidates, who were supervised by ISSR staff, graduated. Sandra Buchler, Lachlan Heybroek, Judy Rose, Daniel Rosendahl and Toby Miles-Johnson received their doctorates in the July graduation ceremony.

Kelly Greenop, Stephen Heimans, Angela Kreutz, Rachel McDonald, Christopher Salisbury, Jonathan Smith, Gregory Vass and Sharon Wheller also graduated with doctorates during 2013.

Dr Buchler, recipient of the Dean's Award for Research Higher Degree Excellence in 2012 and currently employed as assistant professor at University of Bamberg in Germany, said her Institute supervision team was excellent as was the research culture of ISSR.

"They are excellent researchers and are doing very interesting work. I found that the regular seminars and the Methodology group were very engaging and produce a friendly and collaborative work environment," she said.

"Doing a very statistic-heavy PhD, I was especially appreciative of the statistics expertise of people at the Institute, in particular Michele Haynes and Mark Western," she said.

Professor Janeen Baxter, Drs Sandra Buchler, Lachlan Heybroek, Judy Rose and Professor Michele Haynes.

**"I think that the supervision that you receive as a PhD candidate makes all the difference, and I was very lucky to have a very dedicated and approachable supervision team. That made all the difference," she said.**

Dr Heybroek also valued the team atmosphere at ISSR and the work opportunities.

"Postgraduate studies, tutoring and working in the School of Social Science and ISSR have been very enjoyable and life changing," he said.

"A big thank you to all my colleagues and the academic, teaching and administrative staff who helped me along the way," Dr Heybroek said.

During her candidature Dr Rose taught in the Families and Households course at the School of Social Science and worked as a Research Assistant at ISSR on the Paid Parental Leave Evaluation (PPL) and gender equality in families' projects.

Dr Rose looks forward to continuing her research work with ISSR on families and gender.

"I was fortunate enough to turn my passion into my PhD topic, which investigated how parents manage, balance, or juggle their paid/unpaid work, and other aspects of their life," she said.

Dr Rosendahl was supervised by Professor Paul Memmott, who is a research leader of the Institute's Indigenous research cluster and the Director of the Aboriginal Environments Research Centre (AERC).

Dr Rosendahl, who has now taken up the position offered to him of Adjunct Research Fellow at James Cook University, said doing his PhD was a rich experience that made him realise how research can benefit and influence others.

"If it were not for Paul and Sean's (supervisors) generosity, friendship and guidance throughout my research and field work, it would not have been the brilliant experience that it was," he said.

Dr Toby Miles-Johnson was supervised by Professor Lorraine Mazerolle and Senior Lecturer Dr Adrian Cherney.

Dr Miles-Johnson is a Lecturer in Criminology at the School of Social Science and Associate Research Fellow with the Australian Research Council (ARC) Centre of Excellence in Policing and Security (CEPS).

From 2014 the Institute, in recognition of the importance of its role in contributing to training research leaders, will become an enrolling unit.



## Winter School

**Leading international academic and visionary inspires a new generation of students with "real utopias"**

UQ higher degree students were introduced to the ideas of emancipatory social science at the 2013 Winter School presented by renowned sociologist Professor Erik Olin Wright of the University of Wisconsin-Madison.

The school started with a "speed dating" master class where students raised research questions and puzzles for Professor Wright, followed by an intensive mini-course based on Professor Wright's book, **Envisioning Real Utopias**, which outlines a framework for "real utopias".

Since 1992 Professor Wright has directed The Real Utopias Project, which explores a wide range of proposals for new institutional designs that embody emancipatory ideals.

"We live in an era where most people think there is not much of an alternative. The response to the crisis we confront is not that it is an opportunity to forge a fundamentally new path into the future but this is a time to buckle down and to accept the pain of austerity," Professor Wright said.

"It is in this context that the Real Utopias Project was born. It's an attempt to provide us with theoretical tools to seriously interrogate the possibility of alternatives, to maintain deep and unapologetic commitment to emancipatory ideals while at the same time being equally committed to creating real

institutions that actually work," he said.

We can't be content with the idea that, "where there is a will there is a way", says Professor Wright, instead, we need "real utopias" – that search for alternatives institutions that embody our deepest aspirations for a just and humane world.

"We need to combine visionary idealism of alternatives with an equally committed desire to build institutions that actually work, are sustainable and solve the problems which we see," he said.

PhD candidate Eryn Macarayan said the winter school gave her the realisation of the importance of alternative perspectives and that there can be and are "real utopias" that work in the real world.

"The examples presented in class also gave me clear guidelines on not only envisioning real utopias, but also on how we can create them in today's world," she said.

"During the speed dating he also gave his insights on how research can effectively be translated to create bigger institutional, and perhaps, global impacts. He pointed out the value of social movements in research and how such collaborations can improve research outcomes," Ms Macarayan said.

PhD candidate Alex Smith said Professor Wright's ideas and the experience of the workshop have encouraged her to critically evaluate her research and ask how it is situated relative to the social, political and economic power at work in capitalist societies.

**"The workshop also helped to distil the kinds of foundational principles inherent in radically democratic, egalitarian initiatives and particularly well highlighted the great many potential avenues available for working towards emancipatory change and social empowerment," Ms Smith said.**

In the final sessions each student presented a "real utopia" from their experience. Ms Smith, as a member of a community garden, chose the Graceville Community Garden, and Northey Street City Farm community gardens in Brisbane as her topic.

"It particularly highlighted the great many potential avenues available for working towards emancipatory change and social empowerment – including the humble community garden group," she said.

See story page 30 on the John Western Memorial Lecture which was presented by Professor Wright.

Caption: Professor Wright and Winter School student (above).

Research & Higher Degree Supervision List

RHD STUDENTS

The table below lists RHD candidates that were supervised by ISSR staff in 2013, with ISSR staff names in bold. In 2013 ISSR was not yet an enrolling organisation for RHDs.

Candidate Name	Supervisor Names	Project Title
Acutt, Amanda	<b>Mazerolle, Lorraine, Antrobus, Emma Bennett, Sarah</b>	Truancy, truancy laws and interpretations of policy: an exploration of third party policing legal levers within the context of a randomised field trial
Apelt, Linda	<b>Head, Brian</b> McDonald, Donna Nankervis, Karen	The evolution of disability policy reform in Australia
Barnes, Rodger	<b>Memmott, Paul,</b> Brereton, David	Implementation and outcomes of the Granites mining agreement with Aboriginal people
Bedford, Laura	<b>Mazerolle, Lorraine Antrobus, Emma Bennett, Sarah</b>	Randomised controlled trials in policing: an organisational learning perspective
Bell, Jennifer	<b>Head, Brian Boreham, Paul</b> Cherney, Adrian	Knowledge brokering: bridging the gap between academia and policy making in Australia?
Benier, Kathryn	Wickes, Rebecca <b>Higginson, Angela</b> Pickering, Sharon	Exploring incidences of prejudice motivated crime in two Australian cities.
Binks, Amanda	Kenway, Steven <b>Head, Brian</b> Lant, Paul	Design and evaluation of approaches to community-led climate change adaptation and disaster risk management planning for WASH services
Bissing-Olson, Megan	<b>Fielding, Kelly</b> Iyer, Aarti	Relationships between environmental attitudes, values, and your behaviour
Brink, Katrina	<b>Hewitt, Belinda</b> Skrbis, Zlatko	Positive youth settings, supportive relationships and trust: what factors support youth attainment of year 12 Queensland youth?
Coates, Rebecca	Skrbis, Zlatko <b>Western, Mark</b>	Educational and Occupational Aspirations of Young Australians: Towards Understanding Socioeconomic Outcomes
Connolly, Malcolm	<b>Memmott, Paul</b> Lilley, Ian Schmidt, Susanne	Understanding the Need for Establishing Core Refuges in Spinifex Grasslands for the Production of Resin by Aboriginal Communities in North-West Queensland
Cooke, Anna	<b>Fielding, Kelly</b> Louis, Winnifred	Supporting climate change relevant pro-environmental behaviour with the theory of planned behaviour
Creagh, Susan	Lingard, Robert <b>Western, Mark</b>	What is the relationship between second language acquisition, as measured using the ESL bandscales, and performance on the NAPLaN tests?
Curth, Jodie	<b>Boreham, Paul</b> Boege, Volker	The AFP and Capacity Building: Locating the goal posts in a foreign policy space
Ferris, Jason	<b>Mazerolle, Lorraine Haynes, Michele</b> Lloyd, Belinda McKenzie, Samantha	The impact of alcohol on society: Exploring the burden on police, ambulance, emergency departments and hospitals
Foulstone, Alexis	<b>Janeen Baxter</b> Adrian Kelly	Alcohol use and relationship satisfaction in young adult couples: An Australian longitudinal study
Garvey, Raelene	Goos, Merrilyn <b>Head, Brian</b> Scott, Roger	The Education and Training Reforms for the Future, 1996-2006: Policy ideas, Networks and Interventions
Godwin, Jenine	<b>Memmott, Paul</b> Nash, Daphne <b>Parsell, Cameron</b>	Living? the DJ Way: Aboriginal housing and health in Dajarra
Greenop, Kelly	Babidge, Sally <b>Memmott, Paul</b>	‘It gets under your skin+’: Place meaning, attachment, identity and sovereignty in the urban Indigenous community of Inala, Queensland.
Hauser, Vivian	<b>Memmott, Paul</b> Nash, Daphne	Indigenous community-based sustainable housing initiatives: lessons from North American practices

Candidate Name	Supervisor Names	Project Title
Herbert, Bronwyn	<b>Parsell, Cameron</b>	Breaking the homeless cycle: the past, present and future effects on families experiencing homelessness
Hooper, Megan	<b>Fielding, Kelly</b> Jetten, Jolanda	Understanding volunteers? decisions in the workplace: the role of individual, social identity, and organisational variables
Irwin, Kate	Jones, David <b>White, Gentry</b>	The view from the ‘Beat’: An analysis of the implications of threat perception for local counter-terrorism policing in Australia and the United Kingdom
Janse Van Rensburg, Willem	<b>Head, Brian</b> Ward, Ian	Climate change sceptics in New Zealand: institutional capacities, overseas linkages and political relevance
Karmaker, Mithila	Harrison, Gai Griffiths, Judith <b>Parsell, Cameron</b>	Immigrants in the private rental market of Australia: Pathways, barriers and experiences
Kashem, Mohammed Bin	Cherney, Adrian <b>Mazerolle, Lorraine</b>	Reforming Bangladesh Police: the impact of Model Police Station on Crime Clearance and Conviction Rates
Leslie, Kate	<b>Mazerolle, Lorraine Antrobus, Emma Bennett, Sarah</b>	Family compliance in police efforts to reduce truancy: exploring the effectiveness of negotiated case plans
Lewis, Bradley	<b>Head, Brian</b> Bell, Stephen	Cooperation and competition in water resource management: governance, stakeholder engagement and policy development in SE Queensland
Lim, Poh Ping	<b>Western, Mark Baffour, Bernard Haynes, Michele</b>	An activity based microsimulation model of travel demand in Australian capital cities.
Linn, Seonaid Elizabeth	Fryer, David <b>Meyer, Silke</b>	‘Lived Experience’, peer support/ mutual aid and subjectivity: Collaborative critical action research with mental health service consumers
Macarayan, Erlyn Rachelle	<b>Western, Mark</b> Curley, Melissa <b>Jones, Andrew</b>	Government policies and interventions to address social inequalities in non-communicable diseases in the Philippines and Australia
Martinez, Arturo	<b>Western, Mark Haynes, Michele Tomaszewski, Wojtek</b>	Exploring patterns of social mobility in Asia
McDonald, Rachel	<b>Fielding, Kelly</b> Louis, Winnifred	The role of emotion is communicating pro-environmental messages: a systematic analysis
McNeil, Maelisa	<b>Baxter, Janeen Hewitt, Belinda</b>	The relationship between marriage, relationship transitions, and health and well-being.
Miles-Johnson, Toby	<b>Mazerolle, Lorraine</b> Cherney, Adrian	Policing gender diversity: perceptions of intergroup difference between police and transgender people
Nagara, Dhian Puspa	Liu, Shuang <b>Baxter, Janeen</b>	Intercultural adaptation of Indonesian migrant workers in Malaysia
Nanthanavone, Thongdeuane	<b>Parsell, Cameron</b> Melville, Roselyn Owen, John Westoby, Peter	Exploring local leadership in Lao-based INGOs
O’Flaherty, Martin	<b>Baxter, Janeen Haynes, Michele</b> Turrell, Gavin	For richer or poorer, in sickness and in health: the role of life course family processes in health equality
Penny, Marie	<b>Memmott, Paul</b>	Effective community participation in post-disaster re-construction
Ramsay, Rebekah	Kemp, Deanna <b>Moran, Mark</b>	Livelihoods restoration in the extractive sector: examining non-conventional approaches to resettlement



Candidate Name	Supervisor Names	Project Title
Rose, Judith	<b>Baxter, Janeen</b> <b>Hewitt, Belinda</b> Keogh, Jayne	A socio-linguistic study of work-life balance issues for working mothers of school-aged children
Salisbury, Christo-pher	Spearritt, Peter <b>Head, Brian</b>	Smart State: creating a knowledge economy in Queensland
Samekto, Candra Rahmadiyanto	Ross, Angela Abal, Eva <b>Head, Brian</b>	Water sensitive development
Shepherd, Nicole	<b>Zadoroznyj, Maria</b> <b>Martin, William</b> Short, Patricia	Sociology of occupations in mental health care
Shieh, Abbas	Searle, Glen <b>Fielding, Kelly</b> Johnson, Laurel	Redefinition of Urban Form in Information Age: New policy planning for creation of new Life/Work communities in Australia
Smith, Alexandra	<b>Zadoroznyj, Maria</b> Willis, Jon	Women's experiences of extra-ordinary breastfeeding situations in the Australian context: low supply milk sharing and definitions of motherhood
Smith, Jonathan	Skrbis, Zlatko <b>Hewitt, Belinda</b> <b>Western, Mark</b>	Youth internet engagement and inequality in Australian society.
Smith Devetak, Naomi	Everingham, Jo-Anne <b>Head, Brian</b> Kemp, Deanna	Examining the role of research integrity and its governance in producing evidence-based research in contentious policy arenas
Smith, Nita	<b>Fielding, Kelly</b> Louis, Winnifred Smith, Liam	Acelerating transitions to Water Sensitive Cities by influencing behaviour
Spallek, Melanie	<b>Haynes, Michele</b> <b>Jones, Andrew</b> <b>Zadoroznyj, Maria</b>	Interrelationships among Home ownership and early family events in Australia
Sper de Brito, Regis	Franks, Daniel <b>Head, Brian</b> Mitchell, Elizabeth	Inter-sectoral collaboration between the Australian Govern-ment, the oil industry and the NGO sector to improve social indicators in Indigenous communities.
Stambe, Rose-Marie	<b>Meyer, Silke</b> Fryer, David	Getting over themselves: rethinking the relationship between mental health and the subjectivity of unemployed and under-employed Australian youth
Sydes, Michelle	Wickes, Rebecca <b>Higginson, Angela</b>	Immigration, crime and collective efficacy
Terrill, Janice	Parker, Polly <b>Baxter, Janeen</b> <b>Perales Perez, Francisco</b>	An investigation into the role of Mentoring and Peer Coaching in the Career Decisions made by Female Technical professionals in the Australian Mining Industry
Thompson, Jenna	Burton, Benjamin <b>Mazerolle, Lorraine</b> <b>White, Gentry</b>	Subgraph idenification and detection in complex networks
Umam, Ahmad Khoirul	Whitehouse, Gillian <b>Head, Brian</b> Khan, Mohammed	Politics of anti-corruption in the Indonesian post-Soeharto administration
van der Arend, Jenny	<b>Head, Brian</b> <b>Boreham, Paul</b> Cherney, Adrian	Policy-maker perspectives on the use of externally produced social science research to inform policy development and pro-gram review - the factors that support its effective utilisation
Wheller, Sharon	<b>Boreham, Paul</b> <b>Haynes, Michele</b>	Socio-spatial impacts on labour market transitional outcomes a study of disadvantage
Wiedlitzka, Susann	<b>Mazerolle, Lorraine</b> Miles-Johnson, Toby <b>Ramirez, Suzanna</b>	The legislative context of prejudice motivated victimization: the shaping of citizen perceptions of police legitimacy and the decision to report



Executive			
Professor Mark Western	Director	Miss Amelia Gray	Research Assistant
Professor Michele Haynes	Program Leader, Research Methodology and Social Statistics	Dr Belinda Hewitt	Senior Research Fellow
Professor Brian Head	Program Leader, Sustainability and Environment, and Policy Analysis	Dr Angela Higginson	Research Fellow
Ms Cordelia Jackson	Deputy Director (Operations)	Dr Amity James	Research Fellow
Professor Andrew Jones	Program Leader, Social Wellbeing, Health and Housing	Ms Nicole Kapelle	Research and Administrative Assistant
Dr Cameron Parsell	Acting Program Leader, Social Wellbeing, Health and Housing	Ms Pauline Kennedy	Research Project Officer
Professor Mark Moran	Professor, Development Effectiveness	Ms Kate Leslie	Conference Associate Convener
Professor Bill Martin	Program Leader, Employment and Education	Ms Ingrid McGuffog	Research Fellow
Professor Lorraine Mazerolle	Program Leader, Policing and Security	Dr Silke Meyer	Research Fellow
Ms Sue McKell	Manager, Innovation and Commercial Development	Miss Leith Morris	Research Officer
Professor Paul Memmott	Director, Aboriginal Environments Research Centre (AERC)	Miss Ornella Moutou	Research Officer
		Dr Joshua Newman	Research Fellow
		Mr Martin O’Flaherty	Senior Research Assistant
		Dr Francisco Perales Perez	Research Fellow
		Dr Maree Petersen	Postdoctoral Research Fellow
		Ms Rhonda Phillips	Postdoctoral Research Fellow
		Dr Jenny Povey	Senior Research Officer
		Miss Emina Prguda	Research Assistant
		Dr Suzanna Ramirez	Research Fellow
		Ms Judith Rose	Research Assistant
		Dr Elise Sargeant	Research Fellow
		Dr Lacey Schaefer	Postdoctoral Research Fellow
		Ms Nicola Seage	Research Officer
		Ms Elizabeth Shaw	Research Officer
		Dr Andrew Smith	Research Fellow
		Ms Adele Somerville	Research Assistant
		Ms Melanie Spallek	Senior Research Officer
		Dr Tsui-o Tai	UQ Postdoctoral Research Fellow
		Ms Jenna Thompson	Research Assistant
		Dr Wojciech Tomaszewski	UQ Postdoctoral Research Fellow
		Dr Gentry White	Research Fellow
		Ms Tanya White	Research Assistant
		Dr Rebecca Wickes	Research Fellow
		Miss Harley Williamson	Research Assistant

Research Staff	
Dr Emma Antrobus	Research Fellow
Dr Tracey Arklay	Research Fellow
Dr Bernard Baffour	Research Fellow in Social Statistics
Professor Janeen Baxter	Australian Professorial Fellow
Ms Laura Bedford	Research Officer
Dr Sarah Bennett	Research Fellow
Dr Yvette Bettini	Research Fellow
Mr Joseph Byrne	Principal CATI Supervisor
Ms Rebecca Coates	Research Assistant
Ms Laetitia Coles	Research Assistant
Dr Linda Colley	Research Fellow
Dr Rochelle Côté	UQ Postdoctoral Research Fellow
Dr Susan Creagh	Postdoctoral Research Fellow
Ms Caroline Crothers	Research Assistant
Dr Kristen Davis	Postdoctoral Research Fellow
Dr Madonna Devaney	Research Fellow
Ms Elizabeth Eggins	Research Officer
Ms Michele Ferguson	Research Officer
Mr Jason Ferris	Senior Research Fellow
Dr Kelly Fielding	ARC Future Fellow



Mrs Ning Xiang	Research Assistant
Dr Mara Yerkes	Senior Research Fellow
Ms Susan York	Senior Project Coordinator
A/Prof Maria Zadoroznyj	Associate Professor
Miss Renee Zahnow	Research Assistant
Dr Bette Zhang	Research Assistant
<b>Operations Staff</b>	
Ms Anna Bartos	Personal Assistant
Ms Erica Davis	Senior Legal Counsel, Research
Ms Emma Earl	Research Development Officer
Ms Sarah Flett	Personal Assistant
Ms Cara Herington	Office Manager
Ms Cassandra Hughes	Executive Assistant/Events Manager
Mrs Louise Keith	Finance Manager
Miss Morgan Lee	Business Admin Trainee
Miss Sally Lowe	Human Resources Officer
Ms Carla McCarthy	Acting Executive Assistant/Events Manager
Ms Linda Morris	Senior Finance Officer
Ms Honor Morton	Marketing and Communications Officer
Ms Adrienne Pryor	Acting Deputy Director (Operations) <a href="#">6 July 2012 – 5 March 2013</a>
Mr Jawad Shamsi	Project Officer (Commercial Development)
Ms Jadwiga Szablewska	Finance Officer
Ms Shannon Tyrrell	Administration Officer
<b>Conjoint Appointment</b>	
Professor Justin Kenardy	Affiliate Professor
Mr Jason Saunders	Conjoint Police Fellow - Inspector
<b>Adjunct Appointments</b>	
Dr Garth Britton	Adjunct Senior Research Fellow
Dr Stephen Darroch	Adjunct Research Fellow
Ms Amanda Hosking	Adjunct Research Fellow
Dr Roderick McCrea	Adjunct Research Fellow
Professor Michael McFadden	Adjunct Professor
Maurie McNarn, AO	Adjunct Professor
Mr Greg Oliver	Adjunct Senior Research Fellow
Mr Darren Pennay	Adjunct Professor

# STAFF

### Honorary Appointments

Ms Jenny Bellamy	Honorary Research Consultant
Emeritus Professor Paul Boreham	Emeritus Professor
Professor Jan Carter	Honorary Professor
Dr Sin Y Cheung	Honorary Senior Lecturer
Professor Fiona Devine OBE	Honorary Professor
Dr Greg Picker	Honorary Research Consultant
Professor Fiona Steele	Honorary Professor
Dr Vikki Uhlmann	Honorary Research Fellow

## RESTEACH PROGRAM

ISSR is a strong participant in UQ’s ResTeach scheme which is designed to involve research only staff in the University’s teaching programs.

The program allows Institute researchers to stay engaged in their discipline through teaching – and, in turn, provides valuable opportunities for undergraduates to meet key researchers. The Program has many benefits, including:

- Expose students to key researchers in order to share their knowledge, practice and enthusiasm
- Improve the student teacher ratio in an effective and efficient manner
- Provide an opportunity for interested researchers to expand their portfolio
- Strengthen the relationship between research and teaching to improve the student learning experience.

In 2013 the following ISSR staff collaborated with these schools to undertake teaching in these courses:

Name	School	Course
Andrew Smith	School EMSAH	Communication in Context, COMU3006
Angela Higginson	School of Social Science	Introducing Quantitative Research, SOCY2339/7339; Applied Quantitative Research, SOCY3039/7039; Introduction to Criminal Justice, CRIM1019
Belinda Hewitt	School of Social Science	Survey Methods, SOCY7230; Gender, Sexuality and Society: An Introduction, SOCY1060
Brian Head	School Political Science and International Studies	Dynamics of Public Policy (POLS7111)
Mara Yerkes	School of Social Science	Current Issues & Debates in Sociology, SOCY3200; Gender, Sexuality and Society: An Introduction, SOCY1060
Silke Meyer	School of Social Science	Youth & Deviance in Australia, CRIM2000
Suzanna Ramirez	School of Social Science	Introduction to Quantitative methods, SOCY2339/SOCY7339

# PROJECTS

## RESEARCH PROJECTS

The table below does not include data collection projects. The table to follow is a list of data collection projects.

Project title	Chief Investigators	Scheme	Duration	Amount
National Homelessness Research Partnership Agreement	Andrew Jones (ISSR),	FaHCSIA	2010-2013	\$1,333,000
Evaluation of Homelessness Service Integration Demonstration projects	Andrew Jones (ISSR)	Queensland Department of Communities	2011-2013	\$136,684
Paid Parental Leave Scheme Evaluation	Bill Martin (ISSR)	FaHCSIA	2010-2014	\$2,720,000
The Utilisation of Social Science Research in Policy Development and Program Review	Brian Head (ISSR), Adrian Cherney (Social Science)	ARC Linkage Project	2010-2013	\$677,000
Studies in Homelessness	Cameron Parsell (ISSR)	AHURI Postdoctoral Research Fellowship	2010-2013	\$135,465
Interrelationships between Housing Transitions and Fertility in Britain and Australia	Michele Haynes (ISSR),	Economic and Social Research Council (UK)	2010-2013	\$9,897
For better or for worse? Understanding the revolution in married life in Australia	Janeen Baxter (ISSR/ Soc Sc), Belinda Hewitt (ISSR)	ARC Discovery	2009-2013	\$560,000
Public responses to alternative water supplies: The role of risk, beliefs and identity	Kelly Fielding (ISSR)	ARC Future Fellowships	2011-2015	\$567,380
Multi-Site Trials of Third Party Policing: Building the Scientific Capacity for Experimental Criminology and Evidence-Based social Policy in Australia	Lorraine Mazerolle (ISSR)	ARC Australian Laureate Fellowships	2010-2015	\$2,601,856
Vulnerable Communities	Lorraine Mazerolle (ISSR)	ARC Centre of Excellence in Policing and Security	2009-2012	\$520,803
National Survey	Lorraine Mazerolle (ISSR)	ARC Centre of Excellence in Policing and Security	2009-2012	\$800,000
The Queensland Community Engagement Trial	Lorraine Mazerolle (ISSR)	ARC Centre of Excellence in Policing and Security	2008-2012	\$517,032
Collaborative Research Network Southern Cross University: Policy and Planning Research for Sustainable Regions	Mark Western (ISSR), Brian Head (ISSR)	Collaborative Research Networks (DIISR) & Southern Cross University	2011-2014	\$472,510
Social Networks and Subjective Wellbeing in Australia, China and the United Kingdom	Mark Western (ISSR)	ARC Discovery	2013-2015	\$309,362
Learning Catalysts	Mark Western (ISSR) Janeen Baxter (ISSR), Tsui-O Tai (ISSR)	ARC Linkage	2013-2016	\$589,000

Project title	Chief Investigators	Scheme	Duration	Amount
Respectful Relationships Program Evaluation	Michele Haynes (ISSR), Silke Meyer (ISSR), Lorraine Mazerolle (ISSR)	FaHCSIA	2011-2014	\$666,345
Targeted Crime: Policing and Social Inclusion	Rebecca Wickes (ISSR), Lorraine Mazerolle	ARC Linkage Project	2011-2014	\$115,900
Collective Agreements and Social Security Policy: International Comparison on the Role of Collective Agreements and Social Security Policy	Mara Yerkes (ISSR)	ISSR	2011-2013	\$69,439
Addressing Concentrations of Social Disadvantage	Andrew Jones	AHURI Multi year Research Project	2011 – 2014	\$105,041
Additional PPL Phase 2 Parents Survey	Bill Martin	FaHSCIA Research Project	2012-2013	\$62,223
Dad and Partner Pay	Bill Martin	FaHSCIA Research Project	2012-2014	\$501,273
VET Knowledge Infrastructure in Australia	Mara Yerkes	ECBO Research Project	2012-2013	\$5,437
IMYRP: Aboriginal Housing Outcomes	Mark Moran	AHURI Research Project	2012-2016	\$1,150,000
Brisbane Common Ground	Cameron Parsell	UQ FL Research Project	2011-2013	\$4,500
Evaluation of the Street to Home Initiative	Andrew Jones	QDOC Research Project	2011-2013	\$215,351
Exploring offender's compliance with domestic violence orders	Silke Meyer	UQNSRSF Research Project	2011-2014	\$11,750
Pathways out of homelessness for rough sleepers	Cameron Parsell	FaHSCIA Research Project	2010-2013	\$247,867
Preventing 1st Time Homelessness	Maree Petersen	AHURI Research Project	2012-2013	\$88,905
Retirement villages and later life transitions	Maree Petersen	UQCIEF Research Project	2012-2014	\$21,553
Building Police Partnerships	Emma Antrobus	NSRSF Research Project	2012-2013	\$11,969
Child Maltreatment	Suzanna Ramirez	NSRG Research Project	2012-2013	\$11,936
Harvest Validation	Louise Keith	Uniquet Commercialisation	2012-2013	\$29,650
Non-Linear dynamic models	Gentry White	UQ ECR Research Project	2012	\$17,500
Project STOP NSRSF	Jason Ferris	NSRSF Research Project	2012	\$11,949
Violent crime in Developing countries	Lorraine Mazerolle	3ie Research Project	2011-2013	\$100,602
Behaviour change for water sensitive cities (A2.2)	Kelly Fielding	CRCWSC Research Project	2012-2016	\$73,500
Engaging Communities with Water Sensitive Cities A2.3	Kelly Fielding	CRCWSC Research Project	2012-2016	\$294,253
Cumulative Socioeconomic Impacts	Brian Head	CCSG Research Project	2012-2015	\$300,000
Recycled Water Risk Communication	Brian Head	AWR Research Project	2011-2014	\$35,580



Project title	Chief Investigators	Scheme	Duration	Amount
Regulatory Frameworks for Water Sensitive Cities	Brian Head	CRCWSC Research Project	2012-2016	\$12,750
Seqwater Firstlink	Kelly Fielding	UQ Firstlink	2012-2014	\$4,000
Better Governance for Complex Decision Making	Brian Head	CRCWSC	2012-2016	\$430,450
Government Agencies use of Evidence	Brian Head	UK-NBHW	2012-2013	\$18,000
Child and Elderly Poverty	Tsui-O Tai	UQ ECR	2013	\$7,000
FaHSCIA Longitudinal Analysis Training	Michele Haynes	FaHSCIA	2012-2013	\$77,716
School Design and Educational Outcomes	Mark Western	QCSSI	2012-2013	\$100,000
Situation Tracking	Andrew Smith	AOARD	2012-2015	\$183,353
MEI 2013 : Flexible Social Analysis Platforms	Michele Haynes	UQ-MEI	2013	\$68,352
Longitudinal Mothers Survey	Belinda Hewitt Gillian Whitehouse Bill Martin	ARC Linkage Project	2013-2016	\$900,000
Youth Gang Violence	Angela Higginson Lorraine Mazerolle	3ie	2013-2014	\$94,855
Alcohol Related Violence	Jason Ferris	Victorian Health Promotion Foundation	2013	\$6,000
Missing Data Methods for Coping with Non-Response and Measurement Error in the Application of Australian Longitudinal Surveys	Bernard Baffour	NSRFG	2013	\$11,984
Long-term Outcomes for Children in Care	Michele Haynes	UQ First Link	2013	\$4,500
Improving Educational Outcomes for Disadvantaged Children	Mark Western Michele Haynes	UQ First Link	2013	\$3,500
FISH Study: MAA Longitudinal	Justin Kennardy Michele Haynes	Motor Accident Authority - NSW	2013-2016	\$500,000
Dual Frame Sampling	Michele Haynes	UQ CIEF	2013-2014	\$74,698
Dual Frame Sampling	Michele Haynes, Mark Western, Bernard Baffour,	ARC Linkage	2013-2016	\$211,022
Health & Hospitals Fund - Evaluation Framework	Michele Haynes	Department of Health & Ageing	2013	\$45,434
eHealth Evaluation - Baseline Design	Michele Haynes	Department of Health & Ageing	2013	\$49,033
ATSI Clearing House Project	Mark Moran	AIHW	2013-2014	\$50,000
AHURI IMYRP Aboriginal Housing Outcomes	Paul Memmott and Mark Moran	AHURI	2012 - 2016	\$1,150,000
Brisbane Common Ground Evaluation	Cameron Parsell	QDHPW	2013-2015	\$380,000
RurAL Living and Wellness	Maree Petersen	ARC Linkage	2013-2016	\$260,000
Older Women's Pathway out of Homelessness in Australia	Maree Petersen	Mercy Foundation	2013	\$25,000
Indigenous Participation in Urban Marketplace	Rochele Cote	UQ Postdoctoral Research Fellowship	2013-2016	\$301,341

Project title	Chief Investigators	Scheme	Duration	Amount
Ending Homelessness Strategies	Cameron Parsell	UQ Postdoctoral Research Fellowship	2013-2016	\$311,305
Models of Supportive Housing Evaluation	Cameron Parsell	AHURI	2013-2014	\$155,466
FaHSCIA Intergenerational welfare dependency literature review	Janeen Baxter	FaHSCIA	2013	\$49,294
Tenancy Management in Remote Aboriginal Communities	Rhonda Phillips	UTAS	2013-2014	\$23,075
Strategic Initiative - Policy Decision Making	Brian Head	VC & DVCR	2012-2015	\$358,104

Project Title	Title
Conrod LSO (Longitudinal Study of Trauma)	UQ , CONROD Centre
Minor Injuries Study - CONROD	UQ , CONROD Centre
Prevalence of Wills survey	UQ, School of Social Work & Human Services
QUT Healthy Texts	QUT
St Lucia Satisfaction Survey	UQ, P&F
Adaptation Choices	UQ Business School
Adaptation Benchmarking	CSIRO
QUT Longitudinal Survey	QUT

## Books

Mazerolle, L., Bennett, S. Davis, J. Sargeant, E. & Manning, M. (2013) Legitimacy in policing. Washington, DC, USA: Office of Community Oriented Policing Services, U.S. Department of Justice.

Memmott, P., Reser, J., Head, B., Davidson, J., Nash, D., O'Rourke, T. et al. (2013) Aboriginal responses to climate change in arid zone Australia: regional understandings and capacity building for adaptation. Southport, QLD, Australia: National Climate Change Adaptation Research Facility.

## Book Chapters

Baxter, J. & Evans, A. (2013) Introduction. In Ann Evans, Janeen Baxter (Eds.), Negotiating the life course: stability and change in life pathways (pp. 1-7). Dordrecht, Netherlands: Springer Netherlands.

Baxter, J., Hewitt, B. Haynes, M. & Western, M. (2013) Pathways through the life course: The effect of relationship and parenthood transitions on domestic labour. In Ann Evans, Janeen Baxter (Eds.), Negotiating the Life Course: Stability and change in life pathways (pp. 145-160). New York: Springer.

Bettini, Y., Rijke, J. Farrelly, M. & Brown, R. (2013) Connecting levels and disciplines: connective capacity of institutions and actors explored. In Jurian Edelenbos, Nanny Bressers, Peter Scholten (Eds.), Water Governance as Connective Capacity (pp. 129-149). Farnham, Surrey, UK: Ashgate Publishing.

Greenop, K. & Memmott, P. (2013) Aboriginal identity and place in the intercultural settings of metropolitan Australia. In Evelyn Peters, Chris Anderson (Eds.), Indigenous in the city: contemporary identities and cultural innovation (pp. 256-281). Vancouver, Canada: UBC Press.

Head, B. (2013) Evidence-based policy-making for innovation. In Stephen P. Osborne, Louise Brown (Eds.), Handbook of innovation in public services (pp. 143-156). Cheltenham, United Kingdom: Edward Elgar.

Hewitt, B. (2013) Who gets divorced? the social determinants of marital separation over the life course. In Ann Evans, Janeen Baxter (Eds.), Negotiating the Life Course: Stability and change in life pathways (pp. 121-144). Dordrecht, Netherlands: Springer Netherlands.

Mazerolle, L. & Thompson, J. (2013) Drug law enforcement: reducing the supply of drugs. In Alison Ritter, Trevor King, Margaret Hamilton (Eds.), Drug Use in Australian Society (pp. 251-271). South Melbourne, VIC Australia: Oxford University Press Australia & New Zealand.

Memmott, P. & Blackwood, P. (2013) Managing mixed Indigenous land titles: Cape York case studies. In Toni Bauman, Lisa M. Strelein, Jessica K. Weir (Eds.), Living with native title: the experiences of registered native title corporations (pp. 217-251). Canberra, ACT, Australia: AIATSIS Research Publications (Australian Institute of Aboriginal and Torres Strait Islander Studies).

Trigger, D., Martin, D., Memmott, P., Winn, P., Burke, P., Peterson, N. et al. (2013) Forensic social anthropology. In Ian R. Freckelton, Hugh Selby (Eds.), Expert Evidence: Law, Practice, Procedure and Advocacy 5th ed. (pp. 36.51-36.9058). Pymont, NSW, Australia: Thomas Reuters.

Yerkes, M., Peper, B. & Baxter, J. (2013) Welfare states and the life course. In Bent Greve (Eds.), The Routledge handbook of the welfare state (pp. 105-114). Abingdon, Oxford, United Kingdom: Routledge.

## Journal Articles

Baffour, B., Brown, J. & Smith, P. (2013) An investigation of triple system estimators in censuses. Statistical Journal of the IAOS, 29(1): 53-68.

Baffour, B., King, T. & Valente, P. (2013) The Modern Census: Evolution, Examples and Evaluation. International Statistical Review, 81(3): 407-425.

Baker, R., Angus, D., Smith-Conway, E., Baker, K., Gallois, C., Smith, A. et al. (2013) Visualising conversations between care home staff and residents with dementia. Ageing and Society, FirstView: 1-28.

Baxter, J., Haynes, M. Western, M. & Hewitt, B. (2013) Gender, justice and domestic work: life course transitions and perceptions of fairness. Longitudinal and Life Course Studies, 4(1): 78-85.

Baxter, J. & Hewitt, B. (2013) Negotiating domestic labor: women's earnings and housework time in Australia. Feminist Economics, 19(1): 29-53.

Beal, C., Stewart, R. & Fielding, K. (2013) A novel mixed method smart metering approach to reconciling differences between perceived and actual residential end use water consumption. Journal of Cleaner Production, 60: 116-128.

Bettini, Y., Brown, R. & de Haan, F. (2013) Water scarcity and institutional change: lessons in adaptive governance from the drought experience of Perth, Western Australia. Water Science and Technology, 67(10): 2160-2168.

Bissing-Olson, M., Iyer, A. Fielding, K. & Zacher, H. (2013) Relationships between daily affect and pro-environmental behavior at work: the moderating role of pro-environmental attitude. Journal of Organizational Behavior, 34(2): 156-175.

Boreham, P., Povey, J. & Tomaszewski, W. (2013) An alternative measure of social wellbeing: analysing the key conceptual and statistical components of quality of life. Australian Journal of Social Issues, 48(2): 151-172.

Brodribb, W., Zadoroznyj, M. & Dane, A. (2013) The views of mothers and GPs about postpartum care in Australian general practice. BMC Family Practice, 14(139): 1-9.

Carroll, A., Gordon, K. Haynes, M. & Houghton, S. (2013) Goal setting and self-efficacy among delinquent, at-risk and not at-risk adolescents. Journal of Youth and Adolescence, 42(3): 431-443.

Cebulla, A. & Tomaszewski, W. (2013) The demise of certainty: shifts in aspirations and achievement at the turn of the century. International Journal of Adolescence and Youth, Article in press.

Chan, G., Kelly, A., Toumbourou, J., Hemphill, S., Young, R., Haynes, M. et al. (2013) Predicting steep escalations in alcohol use over the teenage years: age-related variations in key social influences. Addiction, 108(11): 1924-1932.

Cherney, A., Head, B. Boreham, P. Povey, J. & Ferguson, M. (2013) Research Utilization in the Social Sciences: A Comparison of Five Academic Disciplines in Australia. Science Communication, 35(6): 780-809.

Cherney, A., Head, B. Povey, J. Boreham, P. & Ferguson, M. (2013) The utilisation of social science research - the perspectives of academic researchers in Australia. Journal of Sociology.

Cherney, A. & Povey, J. (2013) Exploring support for terrorism among Muslims. Perspectives on Terrorism, 7(3): 5-16.

Cheshire, L., Wickes, R. & White, G. (2013) New suburbs in the making? Locating master planned estates in a comparative analysis of suburbs in south-east Queensland. Urban Policy and Research, 31(3): 281-299.

Choi, A. & Fielding, K. (2013) Environmental attitudes as WTP predictors: a case study involving endangered species. Ecological Economics, 89: 24-32.

Cloete, S., Horberry, T. & Head, B. (2013) Urban water system safety: a human factors investigation. Water, 40(8): 56-61.

Colley, L. (2013) Not codgers in cardigans! Female workforce participation and ageing public services. Gender, Work and Organization, 20(3): 327-348.

Colley, L. & Head, B. (2013) Changing patterns of privatization: ideology, economic necessity, or political opportunism. International Journal of Public Administration, 36(12): 865-875.

Cooke, L., Erola, J., Evertsson, M., Gahler, M., Harkonen, J., Hewitt, B. et al. (2013) Labor and love: Wives' employment and divorce risk in its socio-political context. Social Politics, 20(4): 482-509.

Darroch, S. & Mazerolle, L. (2013) Intelligence-led policing: a comparative analysis of organizational factors influencing innovation uptake. Police Quarterly, 16(1): 3-37.

Dietze, P., Ferris, J. & Room, R. (2013) Who suggests drinking less? Demographic and national differences in informal social controls on drinking. Journal of Studies on Alcohol and Drugs, 74(6): 859-866.



Ferris, J., Mazerolle, L., King, M., Bates, L., Bennett, S. & Devaney, M. (2013) Random breath testing in Queensland and Western Australia: examination of how the random breath testing rate influences alcohol related traffic crash rates. *Accident Analysis and Prevention*, 60: 181-188.

Fielding, K., Spinks, A., Russell, S., McCrea, R., Stewart, R. & Gardner, J. (2013) An experimental test of voluntary strategies to promote urban water demand management. *Journal of Environmental Management*, 114: 343-351.

Fitzgerald, R., Mazerrole, L. & Mazerolle, P. (2013) Drug normalisation and Australian youth: group differences in the social accommodation of drug use. *Journal of Youth Studies*, 16(7): 901-915.

Foster, M., O'Flaherty, M., Haynes, M., Mitchell, G. & Haines, T. (2013) Health for all? Patterns and predictors of allied health service use in Australia. *Australian Health Review*, 37(3): 389-396.

Gillies, R., Nichols, K., Burgh, G. & Haynes, M. (2013) Primary students' scientific reasoning and discourse during cooperative inquiry-based science activities. *International Journal of Educational Research*.

Habibis, D., Memmott, P., Phillips, R., Go-Sam, C., Keys, C. & Moran, M. (2013) Housing conditionality, Indigenous lifeworlds and policy outcomes: towards a model for culturally responsive housing provision. *AHURI Final Report*(212).

Head, B. (2013) Evidence-based policymaking - speaking truth to power?. *Australian Journal of Public Administration*, 72(4): 397-403.

Hewitt, B., Haynes, M. & Baxter, J. (2013) Relationship dissolution and time on housework. *Journal of Comparative Family Studies*, 44(3): 327-340.

Higginson, A. & Mazerolle, L. (2013) Reporting guidelines for social and psychological intervention trials: considering the special context of crime and justice interventions. *Journal of Experimental Criminology*, 9(3): 379-384.

Higginson, A., Mazerolle, L., Davis, J., Bedford, L. & Mengersen, K. (2013) Protocol for a systematic review: community-oriented policing's impact on interpersonal violent crime in developing countries. *The Campbell Collaboration Library of Systematic Reviews*.

Higginson, A., Mazerolle, L. & Sargeant, E. (2013) Legitimacy policing's impact on crime and disorder in community and places: A systematic review. *The Campbell Collaboration Library of Systematic Reviews*.

Howe, A., Jones, A. & Tilse, C. (2013) What's in a name? Similarities and differences in international terms and meanings for older peoples' housing with services. *Ageing and Society*, 33(4): 547-578.

Jayasekara, H., Ferris, J., Matthews, S., Livingston, M. & Lloyd, B. (2013) Trends in alcohol-attributable morbidity and mortality for Victoria, Australia from 2000/01 to 2009/10. *Journal of Public Health*, Advance Access: 1-9.

Kaukinen, C., Meyer, S. & Akers, C. (2013) Status compatibility and help-seeking behaviors among female intimate partner violence victims. *Journal of Interpersonal Violence*, 28(3): 577-601.

Lee, N., Pennay, A., Hester, R., McKetin, R., Nielsen, S. & Ferris, J. (2013) A pilot randomised controlled trial of modafinil during acute methamphetamine withdrawal: feasibility, tolerability and clinical outcomes. *Drug and Alcohol Review*, 32(1): 88-95.

Liddle, J., Haynes, M., Pachana, N., Mitchell, G., McKenna, K. & Gustafsson, L. (2013) Effect of a group intervention to promote older adults' adjustment to driving cessation on community mobility: a randomized controlled trial. *Gerontologist*, Article in press.

Livingston, M., Dietze, P., Ferris, J., Pennay, D., Hayes, L. & Lenton, S. (2013) Surveying alcohol and other drug use through telephone sampling: a comparison of landline and mobile phone samples. *BMC Medical Research Methodology*, 13.

Lloyd, B., Barratt, M., Ferris, J., Best, D. & Lubman, D. (2013) Factors influencing mortality among alcohol and drug treatment clients in Victoria, Australia: The role of demographic and substance use characteristics. *Australian and New Zealand Journal of Psychiatry*, 47(9): 859-867.

MacLean, S., Ferris, J. & Livingston, M. (2013) Drinking patterns and attitudes for young people in inner-urban Melbourne and outer-urban growth areas: differences and similarities. *Urban Policy and Research*, 31(4): 417-434.

Manning, M., Ransley, J., Smith, C., Mazerolle, L. & Cook, A. (2013) Policing methamphetamine problems: a framework for synthesising expert opinion and evaluating alternative policy options. *Journal of Public Policy*, 33(3): 371-396.

Mazerolle, L., Antrobus, E., Bennett, S. & Tyler, T. (2013) Shaping citizen perceptions of police legitimacy: a randomized field trial of procedural justice. *Criminology*, 51(1): 33-64.

Mazerolle, L., Bennett, S., Davis, J., Sargeant, E. & Manning, M. (2013) Legitimacy in policing: a systematic review. *Campbell Systematic Reviews*, 9(1).

Mazerolle, L., Bennett, S., Davis, J., Sargeant, E. & Manning, M. (2013) Procedural justice and police legitimacy: a

systematic review of the research evidence. *Journal of Experimental Criminology*, 9(3): 245-274.

Mazerolle, L., Darroch, S. & White, G. (2013) Leadership in problem-oriented policing. *Policing-An International Journal of Police Strategies and Management*, 36(3): 543-560.

Mazerolle, L., Higginson, A. & Eggins, E. (2013) Third party policing for reducing crime and disorder: a systematic review. *The Campbell Collaboration Library of Systematic Reviews*.

McDonald, R., Fielding, K. & Louis, W. (2013) Energizing and De-Motivating Effects of Norm-Conflict. *Personality and Social Psychology Bulletin*, 39(1): 57-72.

Memmott, P. (2013) What works: policy, program and service responses to Aboriginal homelessness: Introduction. *Parity: The publication of the Council to the Homeless Persons*, 26(4): 6-8.

Memmott, P., Nash, D., Baffour, B. & Greenop, K. (2013) Crowded out: a case study of homelessness, crowding and the Tennant Creek Women's Refuge. *Parity: The publication of the Council to the Homeless Persons*, 26(4): 16-17.

Meyer, S. & Mazerolle, L. (2014) Police-led partnership responses to high risk youths and their families: challenges associated with forming successful and sustainable partnerships. *Policing and Society*, 24(2): 242-260.

Mondal, S., Memmott, P. & Martin, D. (2013) Preparation and characterization of green bio-composites based on modified spinifex resin and spinifex grass fibres. *Journal of Composite Materials*.

Mondal, S., Memmott, P. & Martin, D. (2013) Preparation and characterization of spinifex resin based bio-polyurethane/thermoplastic polyurethane blends. *Polymer-Plastics Technology and Engineering*, 52(15): 1535-1541.

Murphy, K., Mazerolle, L. & Bennett, S. (2013) Promoting trust in police: findings from a randomised experimental field trial of procedural justice policing. *Policing and Society*, Latest articles: 1-20.

Newman, J., Perl, A., Wellstead, A. & McNutt, K. (2013) Policy capacity for climate change in Canada's transportation sector. *Review of Policy Research*, 30(1): 19-41.

Owusu, N., Baffour-Awuah, B., Johnson, F., Mohan, J. & Madise, N. (2013) Examining intersectoral integration for malaria control programmes in an urban and a rural district in Ghana: a multinomial multilevel analysis. *International Journal of Integrated Care*, 13(JULY-SEPTEMBER).

Parsell, C., Fitzpatrick, S. & Busch-Geertsema, V. (2014) Common ground in Australia: an object lesson in evidence hierarchies and policy transfer. *Housing Studies*, 29(1): 69-87.

Parsell, C., Jones, A. & Head, B. (2013) Policies and programmes to end homelessness in Australia: learning from international practice. *International Journal of Social Welfare*, 22(2): 186-194.

Parsell, C. & Phillips, R. (2014) Indigenous rough sleeping in Darwin, Australia: 'out of place' in an urban setting. *Urban Studies*, 51(1): 185-202.

Perales, F. (2013) Occupational sex-segregation, specialized human capital and wages: evidence from Britain. *Work Employment and Society*, 27(4): 600-620.

Perales, F. & Vidal, S. (2013) Looking inwards: towards a geographically sensitive approach to occupational sex segregation. *Regional Studies*, Article in press.

Perales, F. & Vidal, S. (2013) Occupational characteristics, occupational sex segregation, and family migration decisions. *Population, Space and Place*, 19(5): 487-504.

Povey, J., Boreham, P. & Tomaszewski, W. (2013) The development of a new multi-faceted model of social well-being: does income level make a difference?. *Journal of Sociology*, Article in press.

Powell, O., Fensham, R. & Memmott, P. (2013) Indigenous Use of Spinifex Resin for Hafting in North-Eastern Australia. *Economic Botany*, 67(3): 210-224.

Pruijt, H. & Yerkes, M. (2014) Empowerment as contested terrain: employability of the Dutch workforce. *European Societies*, 16(1): 48-67.

Ramirez, S., Antrobus, E. & Williamson, H. (2013) Living in Queensland: preparing for and communicating in disasters and emergencies. *Australian Journal of Communication*, 40(1): 1-21.

Rose, J., Hewitt, B. & Baxter, J. (2013) Women and part-time employment: easing or squeezing time pressure?. *Journal of Sociology*, 49(1): 41-59.

Sargeant, E. & Bond, C. (2013) Keeping it in the family: Parental influences on young people's attitudes to police. *Journal of Sociology*.

Sargeant, E., Murphy, K. & Cherney, A. (2013) Ethnicity, trust and cooperation with police: testing the dominance of the process-based model. *European Journal of Criminology*.

Sargeant, E., Wickes, R. & Mazerolle, L. (2013) Policing community problems: Exploring the role of formal social control in shaping collective efficacy. *Australian and New Zealand Journal of Criminology*, 46(1): 70-87.

Sargent, L., Lee, M., Martin, B. & Zikic, J. (2013) Reinventing retirement: new pathways, new arrangements, new

meanings. *Human Relations*, 66(1): 3-21.

Shepherd, N. & Meehan, T. (2013) Training for in-home psychiatric disability support workers. *Journal of Mental Health Training, Education and Practice*, 8(1): 35-44.

Short, P., Parsell, C.Phillips, R. Seage, N. & James, A. (2013) Bridging the divide: householder and service provider experiences of forced exits from private rental in Queensland. AHURI Final Report(203).

Skinner, E., Foster, M., Mitchell, G., Haynes, M., O’Flaherty, M. & Haines, T. (2013) Effect of health insurance on the utilisation of allied health services by people with chronic disease: a systematic review and meta-analysis. *Australian Journal of Primary Health*, Online Early: 1-11.

Smith, A., Lyons, A., Ferris, J., Richters, J., Pitts, M., Shelley, J. et al. (2013) Incidence and persistence/recurrence of men’s sexual difficulties: findings from the Australian longitudinal study of health and relationships. *Journal of Sex & Marital Therapy*, 39(3): 201-215.

Smith, J., Skrbis, Z. & Western, M. (2013) Beneath the ‘Digital Native’ myth: understanding young Australians’ online time use. *Journal of Sociology*, 49(1): 97-118.

Tai, T. & Treas, J. (2013) Housework task hierarchies in 32 countries. *European Sociological Review*, 29(4): 780-791.

Thompson, J., Davis, J. & Mazerolle, L. (2013) A systematic method for search term selection in systematic reviews. *Research Synthesis Methods*, Early View: 1-11.

Tomaszewski, W. (2013) Living environment, social participation and wellbeing in older age: the relevance of housing and local area disadvantage. *Journal of Population Ageing*, Article in press.

Tomaszewski, W. & Perales, F. (2013) Who settles for less? Subjective dispositions, objective circumstances, and housing satisfaction. *Social Indicators Research*, Article in press.

Turrell, G., Haynes, M. Wilson, L. & Giles-Corti, B. (2013) Can the built environment reduce health inequalities? A study of neighbourhood socioeconomic disadvantage and walking for transport. *Health & Place*, 19(1): 89-98.

van de Schoot, R., Yerkes, M. Mouw, J. & Sonneveld, H. (2013) What took them so long? Explaining PhD delays among doctoral candidates. *PLoS One*, 8(7): e68839.1-e68839.11.

Walter, M. & Hewitt, B. (2012) Post-separation parenting and indigenous families. *Family Matters*, 91(1): 83-91.

Wattis, L., Standing, K. & Yerkes, M. (2013) Mothers and work-life balance: Exploring the contradictions and complexities involved in work-family negotiation. *Community, Work and Family*, 16(1): 1-19.

White, G. (2013) *Criminal Justice Forecasts of Risk: A Machine Learning Approach*. By R. Berk. New York: Springer. 2012. 115 pages. €39.95 (paperback). ISBN 978-1-4614-3084-1.. *Australian & New Zealand Journal of Statistics*, 55(2): 199-201.

White, G., Porter, M. & Mazerolle, L. (2013) Terrorism risk, resilience and volatility: a comparison of terrorism patterns in three southeast Asian countries. *Journal of Quantitative Criminology*, 29(2): 295-320.

Whitehouse, G., Hewitt, B. Martin, B. & Baird, M. (2013) Employer-paid maternity leave in Australia: a comparison of uptake and duration in 2005 and 2010. *Australian Journal of Labour Economics*, 16(3): 311-327.

Wickes, R., Hipp, J. Sargeant, E. & Homel, R. (2013) Collective efficacy as a task specific process: examining the relationship between social ties, neighborhood cohesion and the capacity to respond to violence, delinquency and civic problems. *American Journal of Community Psychology*, 52(1-2): 115-127.

Wickes, R., Hipp, J. Zahnow, R. & Mazerolle, L. (2013) ‘Seeing’ minorities and perceptions of disorder: explicating the mediating and moderating mechanisms of social cohesion. *Criminology*, 51(3): 519-560.

Wickes, R., Zahnow, R. White, G. & Mazerolle, L. (2014) Ethnic diversity and its impact on community social cohesion and neighbourly exchange. *Journal of Urban Affairs*, 36(1): 51-78.

Yerkes, M. (2013) Choice or constraint? Women’s weekly working hours in comparative perspective. *Sociologia*, 72: 9-30.

Zadoroznyj, M., Brodribb, W., Falconer, L., Pearce, L., Northam, C. & Kruske, S. (2013) A qualitative study of pharmacy nurse providers of community based post-birth care in Queensland, Australia. *BMC Pregnancy and Childbirth*, 13: 144.1-144.10.

Zahnow, R., Wickes, R. Haynes, M. & Mazerolle, L. (2013) Change and stability in ethnic diversity across urban communities: explicating the influence of social cohesion on perceptions of disorder. *Australian and New Zealand Journal of Criminology*, 46(3): 335-356.

Ziviani, J., Darlington, Y. Feeney, R. Meredith, P. & Head, B. (2013) Children with disabilities in out-of-home care: perspectives on organisational collaborations. *Children and Youth Services Review*, 35(5): 797-805.

**Conference Papers**

Amiralian, N., Edwards, G., Milne, J., Memmott, P., Annamalai, P. & Martin, D. (2013). Microfibrillated cellulose (MFC) from *Triodia Pungens*, an Australian native grass. In Nano 2013: TAPPI 8th Annual International Conference on Nanotechnology for Renewable Materials. Nano 2013: TAPPI 8th Annual International Conference on Nanotechnology for Renewable Materials, Stockholm, Sweden. 24-27 June, 2013.

Baxter, J. & Perales, F. (2013). And yet they move: shifts in gender attitudes across the transition into parenthood. In Longitudinal and Life Course Studies. SSLS 2013: Society for Longitudinal and Life Course Studies International Conference, Amsterdam, Netherlands, (31-31). 23-25 September, 2013.

Baxter, J., Perales, F. & Tai, T. (2013). Gender, justice and work: a distributive approach to perceptions of housework fairness. In Mark Wooden, Janeen Baxter, Garry Barrett (Eds.), HILDA Survey Research Conference 2013. HILDA Survey Research Conference 2013, Melbourne, Australia. 3-4 October 2013.

Brady, M. & Perales, F. (2013). Hours of paid work among single and partnered mothers in Australia: how childcare package matters. In Mark Wooden, Janeen Baxter, Garry Barrett (Eds.), HILDA Survey Research Conference 2013. HILDA Survey Research Conference 2013, Melbourne, Australia. 3-4 October 2013.

Davis, K., James, A. & Jones, A. (2013). Can integrated case management reduce the incidence of homelessness: Findings from the Homelessness Service Integration Demonstration Project. In 7th Australasian Housing Researchers’ Conference 2013. 7th Australasian Housing Researchers’ Conference 2013, Fremantle, Western Australia, (xx-xx). 6-8 February, 2013.

Davis, K. & Seage, N. (2013). Understanding Queensland’s street to home program: emerging issues. In 7th Australasian Housing Researchers’ Conference 2013. 7th Australasian Housing Researchers’ Conference 2013, Fremantle, Western Australia. 6-8 February, 2013.

Hewitt, B. & Poortman, A. (2013). Household income after separation: does initiator status make a difference?. In Mark Wooden, Janeen Baxter, Garry Barrett (Eds.), HILDA Survey Research Conference 2013. HILDA Survey Research Conference 2013, Melbourne, Australia. 3-4 October 2013.

Memmott, P. (2013). Bio-architectural technology and the Dreamtime knowledge of spinifex grass. In Stephen Kajewski, Karen Manley, Keith Hampson (Eds.), CIB WBC13: 19th World Building Congress 2013. CIB WBC13: 19th World Building Congress 2013, Brisbane, QLD, Australia, (1-14). 5-9 May, 2013.

Memmott, P. (2013). Economic development and Indigenous housing: the post NRARIH challenge. In National Housing Conference 2013: a new way home.... National Housing Conference 2013: a new way home..., Adelaide, SA, Australia. 30 October-1 November, 2013.

Memmott, P. (2013). Integrating transactional people environment studies into architectural anthropology: a use for useful theory building. In Alexandra Brown, Andrew Leach (Eds.), Open: 30th Annual Conference of the Society of Architectural Historians, Australia and New Zealand (SAHANZ). Open: 30th Annual Conference of the Society of Architectural Historians, Australia and New Zealand (SAHANZ), Gold Coast, QLD, Australia, (905-917). 2-5 July 2013.

O’Rourke, S. & Ferris, J. (2013). Pre-, Side- and Back- Loading Drinking Culture: Associations with Risky Drinking and Alcohol-Related Violence and Harms. In Drug and Alcohol Review. Australasian Professional Society on Alcohol and other Drugs Conference, Brisbane QLD, Australia, (57-57). 24-27 November 2013.

Price, R. & Colley, L. (2013). Young employees in public services: the effects of the GFC. In British Universities Industrial Relations Association: 63rd Annual Conference. British Universities Industrial Relations Association: 63rd Annual Conference, Glasgow, Scotland. 27-29 June, 2013.

Salisbury, C. & Head, B. (2013). Resource development as the engine of growth? The changing political symbols in Queensland economic policy since the 1970s. In APSA 2013: Australian Political Studies Association Annual National Conference 2013. APSA 2013: Australian Political Studies Association Annual National Conference 2013, Perth, WA, Australia. 30 September–2 October, 2013.

Tomaszewski, W., Meiklejohn, C.Smith, A. & Haynes, M. (2013). Residential mobility in later life and its links with housing conditions and wellbeing of older people: a longitudinal analysis of HILDA. In 7th Australasian Housing Researchers’ Conference. 7th Australasian Housing Researchers’ Conference, Fremantle, WA, Australia. 6-8 February 2013.

Tomaszewski, W. & Perales, F. (2013). Who settles for less? Subjective dispositions, objective circumstances, and housing satisfaction. In HILDA Survey Research Conference 2013. HILDA Survey Research Conference 2013, Melbourne, Australia. 3-4 October 2013.

Vidal, S. & Perales, P. (2013). Occupational outcomes of internal migration: the importance of gender and migration roles. In International Population Conference. Proceedings. XXVII IUSSP 2013: The 27th International Population Conference, Busan, Korea. 25-31 August, 2013.



## Creative Works

Perales, F. (2013) HILDASETUP: Stata module to create a longitudinal dataset for the Household, Income and Labour Dynamics in Australia Survey. .

Perales, F. (2013) KITCHENSINK: Stata module to module to return the regression model with the highest number of statistically significant predictors. .

Perales, F. (2013) MUNDLAK: stata module to estimate random-effects regressions adding group-means of independent variables to the model. .

## Research Reports

Antrobus, E., Cheshire, L., Connor, M., George, N., Madsen, W., Ramirez, S. et al. (2013) Identifying and evaluating factors influencing community resilience in a crisis. : 1-50.

Head, B. (2013) How do government agencies use evidence? Report for National Board of Health and Welfare, Stockholm, Sweden. : 1-46.

Higginson, A., Mazerolle, L., Davis, J., Bedford, L. & Mengersen, K. (2013) The impact of policing interventions on interpersonal violent crime in developing countries (Protocol). .

Bill Martin, Mara A. Yerkes, Belinda Hewitt, Marian Baird, Andrew Jones, Emily Rose, Judy Rose, Kristen Davis, Laetitia Coles, Alexandra Heron, and Ning Xiang, Paid Parental Leave Evaluation: Phase 2 Report, 153pp. A copy is attached. It's available at: [www.dss.gov.au/sites/default/files/documents/12\\_2013/paid\\_parental\\_leave\\_evaluation.pdf](http://www.dss.gov.au/sites/default/files/documents/12_2013/paid_parental_leave_evaluation.pdf)

Memmott, P., Greenop, K., Haynes, M., Clarke, A. & Western, M. (2013) The Challenge of monitoring growth in regional Indigenous homelessness: evidence note no. 23. : 1-2.

Memmott, P. & Nash, D. (2013) No wrong door? Managing Indigenous Homeless clients in Mt Isa. Evidence Note no 31. : 1-2.

Memmott, P., Nash, D., Baffour, B. & Greenop, K. (2013) The Women's Refuge and the crowded house: Aboriginal homelessness hidden in Tennant Creek. .

Memmott, P., Nash, D. & Birdsall-Jones, C. (2013) Indigenous homelessness in regional Australia. : 1-81.

Memmott, P., Nash, D. & Birdsall-Jones, C. (2013) Indigenous homelessness in regional Australia: evidence note no. 54. : 1-2.

Milligan, V., Easthope, H., Liu, E., Green, S., Phillips, R. & Memmott, P. (2013) How is social housing best delivered to disadvantaged Indigenous people living in urban areas?

Perales, F., Higginson, A., Baxter, J., Western, M., Zubrick, S. and Mitrou, F. (2013) 'Intergenerational Income Support Dependency. Report to the Federal Government Department of Families, Housing, Community Services and Indigenous Affairs' Federal Government Department of Families, Housing, Community Services and Indigenous Affairs

Phillips, R. (2013) Integrated responses to homelessness in Australia: what works and why?. .

Western, M., Crothers, C., Haynes, M., Connelly, L. and Baffour, B. (2013) Evaluation Framework for Health and Hospitals Fund. ISSR Report No. ISSR060523. Prepared for the Department of Health and Ageing, Canberra, ACT.