

# ISSR ANNUAL REPORT 2014

## CONTENTS

02	Messages
04	About ISSR
11	Research highlights
26	Awards
30	RHD students
36	Research services and innovation
40	International engagement
44	Events
50	Projects
54	People
66	Publications

# Messages

## From the Vice-Chancellor



The University of Queensland's Institute for Social Science Research (ISSR) delivers excellent research to people in government and industry who seek to improve individual and community life.

The Institute's performance was assessed under the University's review processes in 2014 and ISSR performed exceptionally well, being commended for 'becoming worldclass in quantitative social sciences with the potential to be world leading'. This is a tremendous endorsement of UQ's flagship social sciences institute by a panel of external reviewers from Australia and overseas.

It reaffirms the excellence already recognised by the Australian Research Council in selecting UQ to lead the ARC Centre of Excellence for Children and Families over the Life Course (the Life Course Centre), which is administered by ISSR and was launched in 2014. UQ is proud and delighted to contribute research leadership to this crucial endeavour to address disadvantage and inequality.

The ARC Centre of Excellence scheme is among the vitally important initiatives that need to be maintained in a changing landscape for Australian research funding. Australia should continue to underwrite this type of nationally significant work to ensure the future productivity of our economy and the social health of our nation. Australian research is chronically underfunded, and the fee deregulation debate has served to emphasise that we must be careful to ensure that students at Australia's universities are not forced to cross-subsidise vital research through their education fees. Australia can and should do more to safeguard national research performance.

The Research and Development tax concession is one example of innovation in Australia's national research funding infrastructure, allowing Australian businesses to offset some of the costs of doing research but excluding the social sciences in anything more than a supporting role. And yet the work of ISSR points to the critical importance of social science research. ISSR has more than 160 clients and collaborators, characterised by their diversity and the wide-ranging applications for which they draw on research in the social sciences. The more that Australia can do to support great research, the more likely we are to thrive.

Internally, ISSR continues to achieve milestones. It successfully transitioned into the Faculty of Humanities and Social Sciences in 2014, whilst maintaining its distinct identity and operating strengths as an Institute. The Faculty and the Institute continue to look for ways to leverage off their relative strengths in order to grow UQ's research and to broaden and consolidate relationships with external research partners. Planning is also underway for ISSR to be the foundation tenant in UQ's research precinct at Long Pocket.

I commend Professor Mark Western and all ISSR staff, students, collaborators, partners and supporters for your dedication and high performance in 2014. I also thank you in advance for the real and lasting benefits you will deliver to society, for many generations to come.

UQ Vice-Chancellor and President,  
Professor Peter Høj

2014 established important foundations for a step change in ISSR's research, teaching and training activities. Over the course of the year, ISSR responded to the Review and its recommendations; managed an organisational restructure into a new Faculty; became an RHD enrolling unit; established a new ARC Centre of Excellence; and planned the Institute's move to Long Pocket in 2015.

The Review process was a timely opportunity to reflect on the achievements of the Institute, learn from our challenges, and plan for the future. The feedback from the Review Panel was exceptional. They were tremendously impressed by what they saw at ISSR, not just by the quality of the work of students and staff but also by the collegiality and contributions to a supportive workplace culture. Our response to the Review – a highly professional and collective effort of ISSR staff – reflected this praise. We now have a clear sense of the scope of our activities and operations, of areas where we excel and of the opportunities we need to develop. In 2015, we will start to implement the Review's recommendations including building new capabilities in the science of inequality, computation, and data mining.

ISSR's RHD enrolling unit goes some way towards fulfilling the significant contribution ISSR can make towards building social science research capability in Australia. PhD and Masters research students are the future of our fields and bring energy, enthusiasm and dynamism. Already, it is clear that there are many outstanding stars amongst our 2014 cohort of 16 undertaking studies in fields such as psychology, criminology and political science. In addition, ISSR RHD students uniquely benefit from access to professional methods training through our Methods for Social Analysis and Statistics training. Our aim is to now grow RHD numbers and develop a nationally distinctive, high quality research training experience, which prepares our graduates to become the next generations of research leaders.

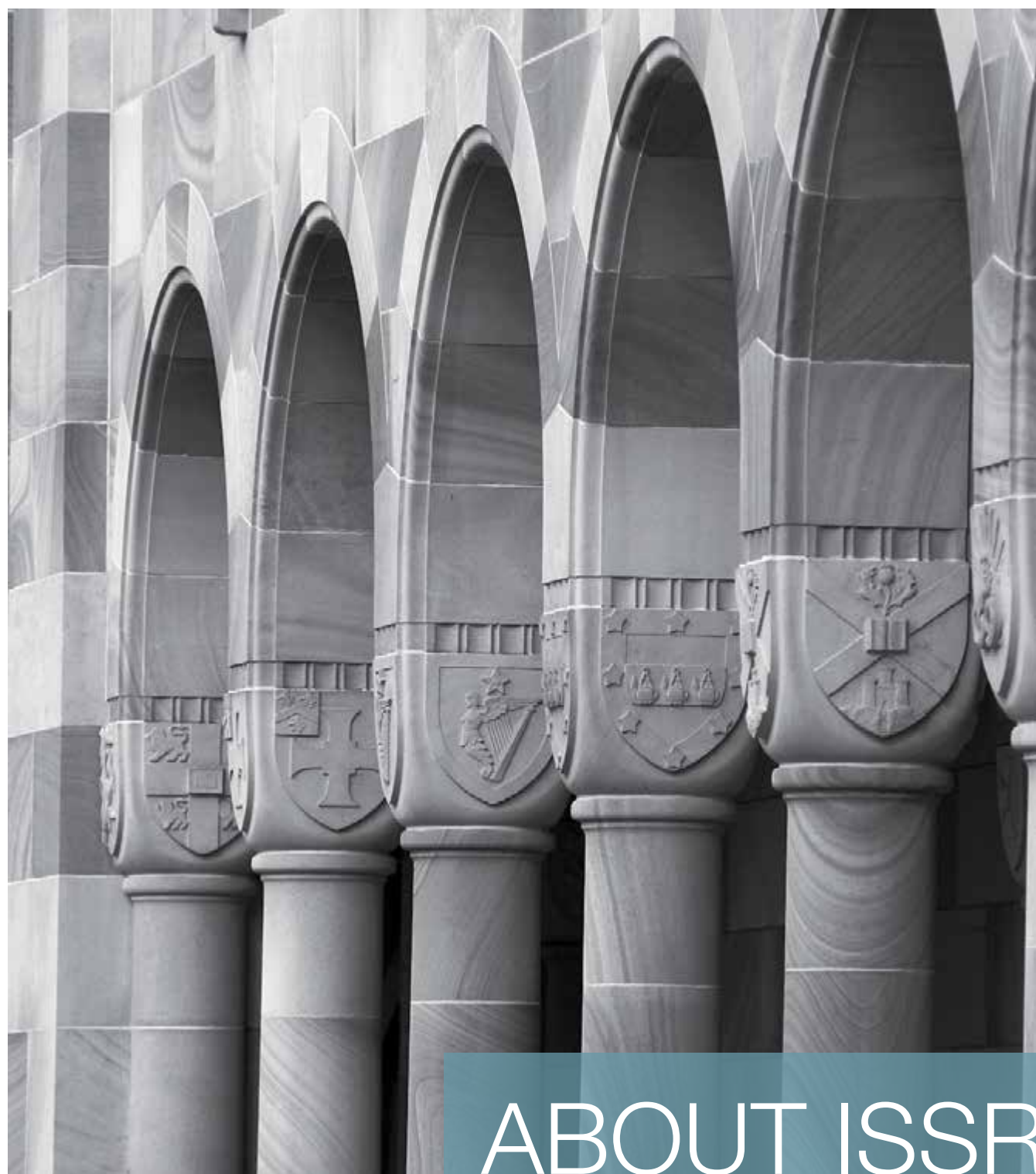
Securing the ARC Centre of Excellence for Children and Families over the Life Course was an important milestone, not just for the Institute but for Australian social sciences. We now have a genuine vehicle to bring together researchers, government and industry to address the most significant research questions and problems on intergenerational social disadvantage. Distinct from other research initiatives, the Centre provides ISSR with significant opportunities for leading innovation in the space of partnership development and external capacity building, approaches to interrogating big data and identifying key drivers and to trialing and developing new policy solutions in other policy areas. In 2014, the Centre exceeded its KPIs in a number of areas including publications, new funding and government briefings and is well placed to consolidate this success in the coming year.

Now, with plans to move to Long Pocket in progress, I am excited about the opportunities for Institute growth and research collaboration. Bringing the Institute together in one physical space at Long Pocket will create a stronger sense of identity, improved capacity (including state-of-the art training facilities and a new CATI lab), and greater scope to engage our external partners and colleagues on site. The Review Committee recognised that we are a world-class Institute with the potential to be world-leading and in view of the hard work, support and professionalism of ISSR staff I am confident that we are on course to achieve this. I would like to thank each and every ISSR team member for your commitment over the last year and look forward to building on the Institute's success with you over the coming years.

ISSR Director,  
Professor Mark Western

## From the Director





# ABOUT ISSR

## VISION

Social science leadership for a better world

## MISSION

To undertake social science for public value and to contribute to the public interest, the advancement of knowledge, and the advancement of our fields.

## GOALS

The Institute's objectives are to:

- ▶ Address significant social problems, questions and issues. The significance or importance of our work relates to its relevance to public and social policy, broad societal impact and scientific (that is, substantive disciplinary) concern.
- ▶ Create public value. We aim to contribute beyond academia and to have value, relevance and impact for stakeholders, partners, end-users and society as a whole.
- ▶ Produce high quality research. We aspire to develop strong theories and coherent substantive arguments, high quality evidence, high quality methods of analysis, and robust defensible interpretations of that evidence.

## VALUES

As well as supporting the realisation of UQ's Learning, Discovery and Engagement objectives, ISSR works towards and supports the values of UQ to create a positive and sustainable unit of high quality research. The success and continued development of ISSR is underpinned by the University's values:

- ▶ The pursuit of excellence
- ▶ Creativity and independent thinking
- ▶ Honesty and accountability
- ▶ Mutual respect and diversity
- ▶ Supporting our people

## KEY FACTS

- ▶ 18 of our researchers have **won competitive research fellowships**, including an ARC Laureate Fellowship (Professor Lorraine Mazerolle), an ARC Discovery Outstanding Researcher Award (Professor Brian Head), an ARC Professorial Fellowship (Professor Janeen Baxter) and two ARC Future Fellowships (Dr Kelly Fielding and Dr Belinda Hewitt).
- ▶ ISSR has led **nationally significant social science research** for government agencies, including the \$3.2 million evaluation of Australia's Paid Parental Leave schemes, which is one of the largest evaluations of federal social policy programs in recent years.
- ▶ Leadership of the *ARC Centre of Excellence for Children and Families over the Life Course* (the Life Course Centre) is located in ISSR. The Life Course Centre is only the **second ARC Centre of Excellence awarded in the social sciences**, and will lead national and international research to address intergenerational disadvantage.
- ▶ We are **commercialising our research products for industry and government** users, including *Hypermancer* text analytics software and the *Methods for Social Analysis and Statistics* (MFSAS) training program.
- ▶ In 2015, **we will relocate to UQ's new Long Pocket campus**, becoming the first permanent tenant and occupying two purpose-redesigned buildings that we will have fully refitted.
- ▶ The Institute has a **35-station Computer Assisted Telephone Interview (CATI) laboratory**, which supports us to deliver end-to-end survey research services.
- ▶ We employ **61 staff members** (52.4 FTE), including 33 academics, 14 research support staff members, and 14 professional staff members.
- ▶ We have **25 research higher degree (RHD) students** after becoming an enrolling unit for PhD candidates in 2014, and our goal is to have 35 students enrolled by 2019.
- ▶ The Institute has grown rapidly since 2008, with **research income increasing by 160%** over the last five years.

## RESEARCH PARTNERS

From 2011-2014, ISSR carried out 161 new research and consulting projects involving collaborations with partners from academia, government, industry, NGOs, foundations and international organisations, as evidenced by cash and in-kind contributions to projects. The number and total value of these projects is summarised in the following table.

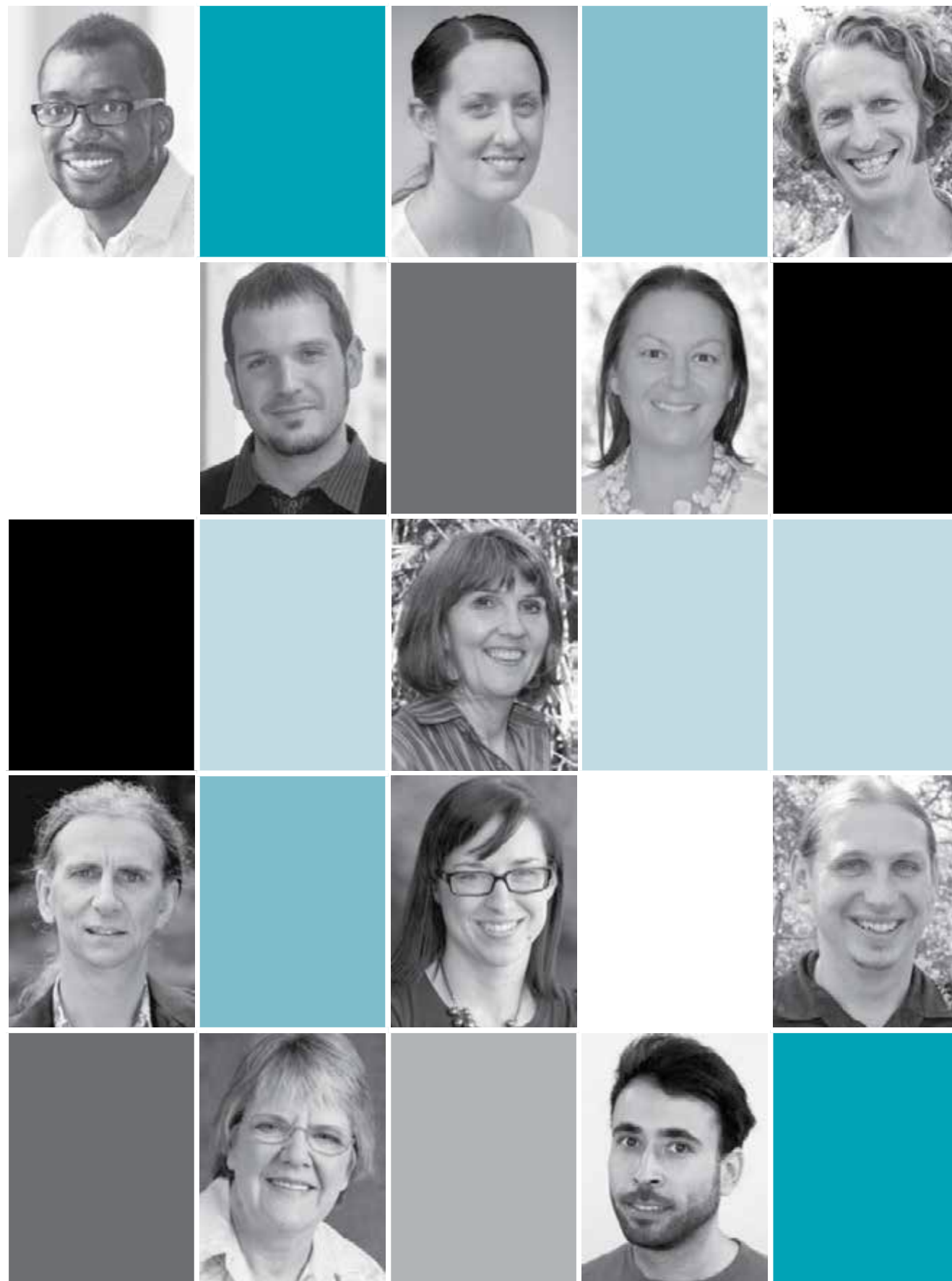
PRIMARY PROJECT PARTNER/S	NUMBER OF PROJECTS	TOTAL PROJECT INCOME	%
Government	68	\$13,138,389	53%
Industry	21	\$2,358,550	9%
Communities	20	\$1,995,458	8%
Foundations	3	\$50,989	0%
International	12	\$1,547,917	6%
Universities	17	\$4,838,120	19%
UQ	20	\$1,030,117	4%
<b>TOTAL</b>	<b>161</b>	<b>\$24,959,540</b>	<b>100%</b>



# RESEARCH IMPACT HIGHLIGHTS

In 2014 ISSR continued to deliver high impact outcomes for our end-users. Our highlights are summarised in the below table.

	HEALTH AND HOSPITAL FUND EVALUATION	RESPECTFUL RELATIONSHIPS PROGRAM EVALUATION	HOUSING OPTIONS POLICY REVIEW		HANDBOOK OF MOBILE MARKET RESEARCH	RESEARCH USE IN THE PUBLIC SECTOR	MASTERCLASS IN EVIDENCE-BASED POLICING	PAID PARENTAL LEAVE EVALUATION
RESEARCH	ISSR researchers developed a methodological framework for the Department of Health to use in evaluating the Health and Hospitals Fund (HHF), a \$3.2 billion nation-building initiative contributing to new health infrastructure that was announced in the 2009-10 Budget.	Professor Michele Haynes led a research team to evaluate the Respectful Relationships initiative, a suite of education programs funded by the Australian Government that aims to raise awareness about ethical behaviours for healthy relationships in young people and to reduce the incidence of sexual assault and family violence.	Professor Andrew Jones completed a review of the policy drivers and research evidence relating to housing options for older people in Australia for the New South Wales Government.		ISSR Research Services Manager Sue York co-authored a practical guide for social research practitioners on the impact of the increasing use of mobile devices, titled The Handbook of Mobile Market Research: Tools and Techniques for Market Researchers.	Professor Brian Head led a team of ISSR researchers on a multi-year ARC-funded project to examine research utilisation and impact within public sector agencies in Australia at both state and national levels, with a specific focus on agencies with responsibilities including human services policies and programs.	Drawing on research into evidence-based policing undertaken with ARC Laureate funding, Professor Lorraine Mazerolle developed a Masterclass in Evidence Based Policing for police practitioners in Australia and internationally.	Professor Bill Martin led a research team to conduct an evaluation of the Australian Government's Paid Parental Leave (PPL) scheme for the Department of Social Services. The four-year evaluation concluded in 2014. The research is being extended through the "Millennium Mums" project, funded by an ARC Linkage Project grant.
IMPACT	The Department used the framework as the basis for a subsequent competitive tender process to appoint a supplier to evaluate the HHF. Professors Michele Haynes and Mark Western participated as Subject Matter Experts on a team led by PricewaterhouseCoopers to deliver the full evaluation.	The Department of Social Services will refer to the evaluation report to benchmark program performance against the National Standards for Prevention of Sexual Assault through Education.	The NSW Department of Family and Community Services described the resulting report as 'a very useful platform for discussions about the role of social housing in meeting the needs of older people for housing assistance'.		Sue has subsequently presented on developments in mobile market research to industry stakeholders, including the Australian Market and Social Research Society 2014 national conference.	The research findings were published in the Impact of Social Sciences blog, one of five multi-author blogs run by the London School of Economics and Political Science (LSE) Public Policy Group in the United Kingdom that provide a hub for researchers, administrative staff, librarians, students, think tanks and government.	The Laureate funded Masterclass is now commercially offered to police agencies throughout the world and has led to formation of the Australia and New Zealand Society for Evidence Based Policing, which now boasts over 800 members from Australia, New Zealand, and other countries in the Asia-Pacific region.	The social policy evaluation produced valuable data and research that provided evidence of how Australia's first national PPL scheme impacted on the employment, health and wellbeing of both mums and dads. Research on this is being extended through the "Millennium Mums" project, funded by an ARC Linkage Project grant.



# RESEARCH HIGHLIGHTS



Institute launches the Life Course Centre to tackle social disadvantage

VISION

Preventing deep disadvantage, realising life's potential

MISSION

To identify the mechanisms underlying the transmission of disadvantage across generations and within families over the life course. And to translate our findings into policy and programs that reduce disadvantage and provide opportunities for all individuals to live the life they choose.

OBJECTIVES

- Discover the principal causes or mechanisms underlying the transmission of social disadvantage.
- Place Australia at the forefront internationally for research and practice on social disadvantage.
- Investigate which policies and practices work in preventing and reducing deep and persistent disadvantage.
- Develop and trial solutions that will reduce the transmission of disadvantage across generations.
- Identify the effects of disadvantage where human capability is reduced, and the compounding effects that see disadvantaged people more likely to face future hardship.
- Provide policy advice and research evidence to agencies that deliver human services.
- Build capacity through productive links with researchers, collaborators and partners.
- Provide research training and mentoring for graduate students and early career researchers.

The Australian Research Council (ARC) Centre of Excellence for Children and Families over the Life Course (Life Course Centre) led by Professor Janeen Baxter was officially launched on 7 October 2014.

The Centre was established to bring leading researchers together, from Australia and internationally, to collaborate with a range of government and non-government partners to tackle the problem of entrenched social disadvantage, spread within families and across generations.

The Life Course Centre (LCC) is a collaboration between four Australian universities – The University of Queensland, The University of Western Australia, The University of Melbourne and The University of Sydney – as well as ten international universities, six Australian government agencies and two non-government organisations.

The Institute for Social Science Research (ISSR) hosts the LCC and was the driver to establish the Centre of Excellence. This fulfilled the Institute's vision of using social science research to create a better world and extend an already strong knowledge base to translate research findings into solutions to disadvantage.

The Centre's chief investigators bring a diverse array of disciplinary expertise in economics, sociology, criminology, statistics, psychology and advanced statistics to tackle the multifaceted problem of social disadvantage and its transmission.

Four of the nine chief investigators are based in ISSR. UQ's Professor Matt Sanders, who founded the now worldwide Triple P parenting program, is also a chief investigator.

LCC Director Professor Baxter said the Centre aims to not only reduce the transmission of disadvantage, but in so doing, to increase the opportunity for Australian children and families to live the lives they choose.

"Together we will deliver the evidence base to help the Australian and state governments develop policy and program initiatives that work to reduce disadvantage," she said.

ISSR is well-positioned to lead an enterprise, such as the LCC, which has

long-term and proven partner relationships with peak government and non-government agencies that have partnered with the Centre.

ISSR Director Professor Mark Western says these proven partner relationships will help facilitate tangible research outcomes.

"We have longstanding collaborative linkages, some of which go back over 10 years, to the peak government and non-government agencies who have partnered with us in the Centre and who have come to us asking for this work to be done," Professor Western said.

"Our NGOs will help us to develop and deliver social interventions, facilitate end-user feedback, and provide practitioner advice and support on engaging hard-to-reach populations," he said.

At the launch, held at Melbourne's Brotherhood of St Laurence (a Centre partner), ARC Chief Executive Officer Professor Aidan Byrne said the ARC-funded centre would play an important role in tackling the global challenge of social disadvantage.

"It will pull together perspectives from a great range of sources to solve important problems and make a real difference to the lives of children and their families," Professor Byrne said.

The University of Queensland Provost and Senior Vice-President Professor Max Lu said the Centre demonstrated confidence in Australia's top social scientists.

"The Life Course Centre represents a vital opportunity for Australia to harness the knowledge and experience of a range of experts to make a comprehensive and innovative analysis of deep and persistent disadvantage," Professor Lu said. "It has outstanding potential to unlock the true promise of current and future generations of Australian children who are born into disadvantage.

"By focusing on solutions that help Australian families to break the cycle of social disadvantage, we will build communities that reap the benefits of social, economic and civic participation," he said.



Life Course Centre Launch, caption for above picture: Advisory Committee Chair, Ms Amanda Vanstone; LCC Director Professor Janeen Baxter; Executive Director Brotherhood of St Laurence, Tony Nicholson; UQ Provost, Professor Max Lu; UQ Acting Deputy Vice-Chancellor (Research), Professor Anton Middelberg; CEO Australian Research Council, Professor Aidan Byrne; LCC Program Leader of Disadvantage Systems and Institute for Social Science Research Director, Professor Mark Western; UQ's Faculty of Humanities and Social Sciences Professor, Tim Dunne

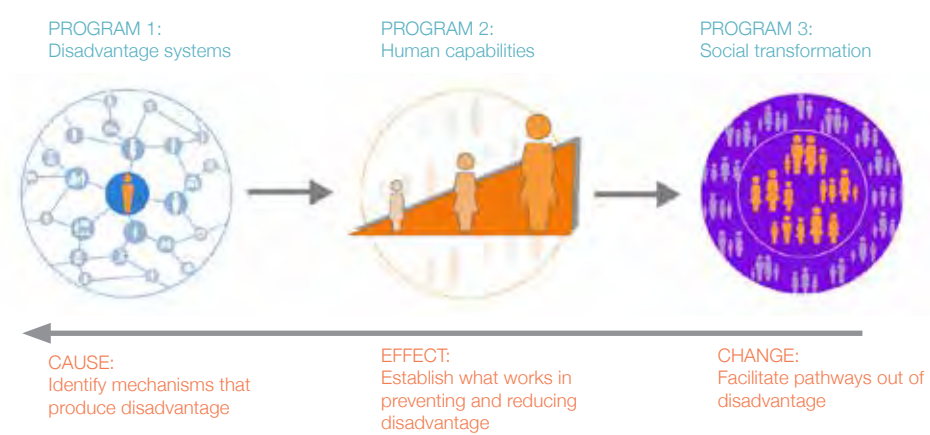
RELATED LINKS  
Life Course Centre website  
lifecoursecentre.org.au



LCC research structure and outputs during 2014

The LCC has identified nine projects for research under the three high-level program classes.

These research projects address specific goals leading to the discovery of new knowledge, the development of new technologies, and the evaluation of new policies and initiatives. The figure below illustrates the interrelationships between the Centre's three research programs and the planned knowledge and technology outputs to be delivered.



LCC summer scholars Laura Dunstan, Ella Kuskoff, Amy Tsai

Research outputs for 2014

RESEARCH OUTPUTS AND INITIATIVES	FELLOWSHIP PROGRAM	WORKING PAPER SERIES	VISITORS PROGRAM		STUDENT SCHOLARSHIPS	DATA WORKSHOP SERIES	PUBLICATIONS	SUMMER RESEARCH PROGRAM
AIM	To create a broad network of researchers, policymakers and knowledge professionals committed to dealing with the problem of deep and persistent disadvantage	To disseminate and make research findings accessible to a broad audience of research, policy and knowledge stakeholders through a fast publication process. Each paper includes a non-technical summary and is available on the LCC website	To provide opportunities for international scholars to create networks and deliver seminars on their latest research		To provide opportunities for students to work on Centre research with our partners and senior researchers	To create a collaborative platform for researchers and Australian and state government representatives to use and integrate data for research	Research dissemination in academic publications	Provide outstanding students an opportunity to experience a research environment
DESCRIPTION AND 2014 ACTIVITY	Program established consisting of 44 Life Course Centre Fellows	9 papers published in 2014 with topics ranging from wellbeing, schooling, inequality, unemployment to survey analysis <a href="http://www.lifecoursecentre.org.au/working-papers">www.lifecoursecentre.org.au/working-papers</a>	9 visitors from international institutions hosted		Donations from the LCC launch were used to fund scholarships with LCC's NGO partners	Inaugural workshop held on 8 October, with more scheduled for 2015	60 publications in 2014	Three students worked with LCC and ISSR researchers over the summer holidays. The students gained an insight into the research process and in using qualitative and quantitative data. They also formed valuable relationships and connections with the Institute and its research staff.



## How ISSR is extending its landmark Paid Parental Leave evaluation to shed new light on working families

### Researchers involved in these projects\*

Bill Martin, Belinda Hewitt, Mara Yerkes, Maria Zadoroznyj, Ning Xiang, Marian Baird (University of Sydney), Michelle Brady, Barbara Broadway (University of Melbourne), Andrew Jones, Guyonne Kalb (University of Melbourne), Duncan McVicar (then University of Melbourne), Lyndall Strazdins (Australian National University), Wojtek Tomaszewski, Gillian Whitehouse, Janeen Baxter, Paul Boreham, Dorothy Broom (Australian National University), Luke Connelly, Margaret Walter (University of Tasmania) Mark Western, Mark Wooden, (University of Melbourne), Rachael Chen (University of Sydney), Laetitia Coles, Kristin Davis, Laura Dunstan, Meraiah Foley (University of Sydney), Alexandra Heron (then University of Sydney), Arturo Martinez, Emily Rose, Judy Rose

\*Affiliated with UQ unless indicated otherwise

2014 marked the end of ISSR's four-year evaluation of the national Paid Parental Leave scheme for the Australian Government Department of Social Services.

The Paid Parental Leave (PPL) evaluation is one of Australia's largest ever public policy evaluations. Involving more than 7,500 parents, valued over \$3.2 million, and including an assessment of the national Dad and Partner Pay scheme, the project is significant because of its scale and implementation. It also produced valuable data and research. Funding for the evaluation was announced at the same time as funding for the scheme itself, so that it is a surprisingly rare example of a social policy evaluation that collected baseline data prior to the scheme taking effect. This allowed for a true picture of how Australia's first national PPL scheme has impacted the employment and health and wellbeing outcomes for both mums and dads.

So did the scheme work? In short, yes. ISSR's research showed that the 18 weeks of PPL following childbirth was successful in its main policy aims: encouraging more mothers to take more time off following birth; and benefiting them both personally and professionally, as well as their babies and employers.

Key findings from the research included:

- Greater workforce participation:
  - » Paradoxically, having longer time off after birth increased mothers' tendency to return to work in the longer term, so that more mothers had returned to work by 12 months after the birth of their baby.
  - » PPL increased the likelihood that mothers would return to their pre-birth employers when they went back to work, an effect that was particularly marked among mums with lower levels of formal education, and one with real benefits for mums and employers.
- Improved health and wellbeing:
  - » PPL produced improvements in mothers' health, extended breastfeeding duration, and probably improved babies' health slightly.

- » The additional time and income security provided by PPL reduced the proportion of mothers who felt rushed and pressed for time, thus enhancing work-life balance.
- Positive family and social outcomes:
  - » PPL had the greatest benefits for those less likely to have other parental leave support, including: lower income mothers; those with lower formal education, including casual workers; and self-employed mothers.
  - » Dad and Partner Pay seemed to have the effect of legitimising fathers' role in parenting, both for fathers and employees.

While these effects were found within the first year following the birth of a child, ISSR's researchers are extending the research to follow employment and health and wellbeing outcomes for 'Millennium Mums' as children move through their pre-school years.

Work is being funded with an Australian Research Council Linkage Project grant in partnership with the Department of Social Services. ISSR is hoping to mine the rich data resource that has already been collected to uncover further knowledge about a range of issues related to working parents and gender equality, including the impact of: flexible working arrangements (both formal and informal); employer characteristics; women's career trajectories and job quality; and childcare arrangements. Long-term labour force and child development outcomes will not be evident until the scheme has been operational for a number of years.

ISSR led the evaluation in partnership with researchers from The University of Sydney, The University of Melbourne, Australian National University, and The University of Tasmania. The project has thus far provided research training opportunities for seven Honours and PhD students studying at these universities.

#### RELATED LINKS:

The full reports from the evaluation are available online at: [dss.gov.au/our-responsibilities/families-and-children/programmes-services/paid-parental-leave-scheme](https://dss.gov.au/our-responsibilities/families-and-children/programmes-services/paid-parental-leave-scheme)



TOP IMAGE: PPL Team, from left to right, Laetitia Coles, Ning Xiang, Judy Rose, Maria Zadoroznyj, Bill Martin, Laura Dunstan, Michelle Brady, Belinda Hewitt (Absent team members: Wojtek Tomaszewski, Gillian Whitehouse, Janeen Baxter, Andrew Jones and Emily Stevens)



## Improving the lives of at-risk youth through evidence-based policing



Ability Team: Kate Leslie, PhD Student; Emma Antrobus, Research Fellow; Liz Eggins, PhD Student and Research Officer; Lorraine Mazerolle, ARC Laureate Fellow; Laura Bedford, PhD Student; Sarah Bennett, Research Fellow; Agnieszka Sobolewska, PhD Student; Amanda Acutt, PhD Student. Missing team members are Emina Priguda and Amelia Gray.

Criminologists are testing a new partnership approach to policing truanting young people under randomised field trial conditions. The innovative approach will set a new benchmark for policing using an evidence-based approach to reducing and preventing crime problems.

Professor Mazerolle is the leader of ISSR's Policing and Security Research Program and a leading international experimental criminologist. In 2010 she was awarded an Australian Research Council (ARC) Laureate Fellowship to advance evidence-based policing practice.

Through the ARC Laureate Fellowship, she is funding the experimental evaluation of Project ABILITY, an intervention program aimed at reducing truancy and anti-social behaviour among at-risk youth.

Project ABILITY is an innovative 'third-party policing' intervention where police and schools form a partnership to stop at-risk youth embarking on a downward spiral of school truancy and entering the criminal justice system.

In the ABILITY Trial, police and school representatives meet with parents and truanting young people to explore the underlying reasons for truancy and to clearly communicate the legal responsibilities of parents to make sure their children attend school. Participants develop an 'Action Agreement' to address the causes of truancy and meet again about six months later to review and recognise the accomplishment of agreed actions.

Project ABILITY is an initiative of the Queensland Police Service (QPS), with programmatic funding through the National Drug Strategy Law Enforcement Funding Committee, the QPS Drug and Alcohol Unit as well as The Department of Families, Housing, Community Services and Indigenous Affairs. Ten Australian schools are taking part in the ABILITY Trial, which started in 2011.

The QPS, the Department of Education and Training, and the Department of Communities (Youth Family Support Service) also provide extensive in-kind support in the form of project management, recruitment, and by providing experienced officers and school-based personnel to participate in the ABILITY process.

Early results of the experiment are promising:

- Official school attendance data shows statistically significant differences between the control and experimental groups, post randomisation. Survival analysis assesses the number of days that it takes for the two groups to fail in their efforts to attend school, post randomisation. The Control Group had a lower mean time to failure than the Experimental Group. In real days, the Control Group young people took a mean of 4.5 days to fail, whereas the Experimental Group young people took a mean of 8.2 days to fail in terms of their first absence from school post randomisation.
- Face-to-face survey data collected at 12 weeks post randomisation supports these official school attendance results: at 12 weeks post randomisation, the experimental young people say that they have tried to go to school more often relative to the young people in the Control Group. The statistically significant difference between the Experimental and Control groups of young people saying that they have tried to go to school more often holds at six months post randomisation.
- Official police data, including all actioned recorded offences including arrests, cautions, and warrant records also show some promising results: We find that the Experimental Group has fewer offences in the post randomisation period than the Control Group and our T-Test difference of means shows statistically significant differences between the Experimental and Control groups when we examine the mean number of days to re-offending post randomisation.

Beyond the promising early results of the ABILITY Trial, says Professor Mazerolle, police leadership of the trial is helping to institutionalise evidence-based approaches to policing in Queensland.

"The Queensland Police Service is committed to advancing evidence-based approaches to crime control and crime prevention. This experimental evaluation of the ABILITY Project is one example of how the police are keen to test the efficacy of a new idea under randomised field trial conditions, get the results and then assess whether or not the intervention is worthy of rolling out state-wide.

"Using the evidence-based approach means that only those interventions are used that have been subjected to the rigours of scientific assessment. Field tests of police practice are clearly difficult to do, but in an era of austerity, the public need to know that they are getting good value for the money spent on police services. The ABILITY Trial is just one example of how the evidence-based cycle can help advance best practice policing," Professor Mazerolle said.

In addition to the experimental evaluation of the ABILITY Trial, Professor Mazerolle

earlier led the Queensland Community Engagement Trial (QCET) that surveyed 21,000 drivers in 60 stationary random breath-testing operations in Queensland and found the encounter was far more successful if the police adopt, what is termed, 'procedural justice' techniques of interaction with the public.

The QPS is considering how the results of the QCET experiment might be used in other areas of police engagement with citizens, particularly in highly volatile encounters that generate a lot of complaints.

## Criminology work experience day



Work experience students

Students from Queensland University of Technology and St Peter's Lutheran College attended a one-day work experience event hosted by the Policing and Security Research research program at ISSR.

Professional researchers spoke about what it's like to be a social science researcher and introduced the students to a typical research task of collecting data.

The 12 students used online resources to record environmental characteristics of the crime 'hotspots' which will be included in the Mobile Police Community Office Project.

The students engaged in a real research experience and learnt about research ethics, confidentiality, data coding and data entry and virtual observations.

## Family group conferences

These conferences were integral to the ABILITY Trial. At these conferences:

- Police and school representatives meet with parents and truanting young people
- Underlying reasons for truancy are explored through a facilitated dialogue
- Legal responsibilities of parents to make sure their children attend school are clearly communicated
- Participants develop an 'Action Agreement' to address the causes of truancy
- An exit meeting is held about six months later where participants review the agreement and recognise real accomplishment of agreed actions.



RELATED LINKS:  
[issr.uq.edu.au/content/multi-site-trials-of-third-party-policing-project-ability](http://issr.uq.edu.au/content/multi-site-trials-of-third-party-policing-project-ability)

# EXAMINING THE ROLE OF SUPPORTIVE HOUSING MODELS IN REDUCING HOMELESSNESS

>> Examining the role of supportive housing models in reducing homelessness

The availability of long-term housing is the key to security and stability

The Social Wellbeing, Health and Housing (SWH&H) research program team, led by Research Fellow Dr Cameron Parsell, made big strides in 2014 in homelessness research, particularly in the area of emerging models of supportive housing. Among the numerous reports and papers the team has produced is the key evaluation of Brisbane's Common Ground supportive housing initiative.

During 2014, the SWH&H team worked on projects for major government and non-government organisations including: the Queensland Government Department of Housing and Public Works, the Australian Housing and Urban Research Institute, and the Queensland Mental Health Commission.

Over the past few years the government and service sectors have initiated several approaches to end homelessness. Among these is supportive housing; it offers tenants affordable housing combined with broad ranging and ongoing and voluntary support services.

The two models of supportive housing are congregate and scattered-site housing. The congregate model has social and welfare workers, a concierge and security guards located on site, which provides a secure environment. Governments have described this as an efficient and effective means of delivering services.

The scattered-site housing model is based on single-site housing that is scattered across various suburbs and has support provided through outreach. In both models, the level and intensity of support is voluntary and determined by the tenant.

### Common Ground

The Brisbane Common Ground project examined the nature, experiences and effectiveness of the supported congregated housing model for people exiting homelessness and the experience of the tenants.

The research team initially sought to understand the origins of this type of housing and the basis and mechanism of how the policy transferred from the US to Australia. More recently it looked at this congregate form through Common Ground in Brisbane, Tasmania and Melbourne.

The team also undertook a broad program of research into the scattered-site housing model and it was found to be less controlled than the congregate model. The two models were studied in a range of locations examining how they work for tenants and their effectiveness in different political, policy and cultural contexts.

"Although we have some concerns about the congregate form, it does solve some problems for tenants by enabling them to exert control over their lives, but they also accept the limits on this because of the security and support provided," Dr Parsell said.

By contrast, the studies found that scattered sites often did not have an integrated model of support for tenants. The studies show that no single social housing model is the most effective, and that their success is dependent on a tenant's life experience and especially their exposure to violence and their need for protection from this.

### Three strikes policy

In 2013, the Queensland Government introduced an antisocial behaviour policy stating that if tenants of public housing behaved in a way that the Department of Housing and Public Works deemed poor, then after three strikes within a year they could be evicted.

The research team found that most tenants described as antisocial had pre-existing psychiatric illnesses, significant vulnerabilities, or complex health and social needs and that they had no support. "So the problem behaviours continue and then the three strikes policy and eviction follow, and of course after that their options for getting public housing elsewhere are profoundly limited. Without support the cycle just continues," Dr Parsell said.

### Key 2014 research on supportive housing

*Parsell, C. & Jones, A. (2014) Bold reform or policy overreach? Australia's attack on homelessness. International Journal of Housing Policy, 14(4): 427-443.*

This reviews the national Labor government's 2007 policy priority to permanently reduce homelessness. The review found that although new strategies on homelessness differed from the former crisis-based approach, there was insufficient data to measure the effectiveness of the efforts in achieving targeted reductions in homelessness. It concluded that numerous questions are yet to be adequately answered about how the nation deals with homelessness.

*Parsell, C. & Moutou, O. (2014) An evaluation of the nature and effectiveness of models of supportive housing. AHURI Positioning Paper, 158: 1-46.*

This project evaluated supportive housing by surveying and interviewing tenants and determining what made the housing effective and desirable. The results showed that if tenants felt supported, they were able to take greater control over their day-to-day lives and to also develop informal networks of support with neighbours. However, these could also undermine recovery efforts and contribute to or exacerbate personal problems. The availability of long-term housing was found to be the key to security and stability.

*Parsell, C., Fitzpatrick, S. & Busch-Geertsema, V. (2014) Common ground in Australia: an object lesson in evidence hierarchies and policy transfer. Housing Studies, 29(1): 69-87.*

This article critically examines the process of transferring the Common Ground model into Australia's social housing sector, drawing on the perspectives of the high-level stakeholders. It argues its evaluation gave higher priority to professional intuition and personal experience than formal evidence. It discusses the contested nature of what 'counts as evidence' in housing and homelessness policy and considers the role of academic research in policy development.

## Social housing report

*Jones, A., Phillips, R., Parsell, C & Dingle, G. (2014) Review of systemic issues for social housing clients with complex needs. Prepared for the Queensland Mental Health Commission. St Lucia Qld, Australia: The University of Queensland, Institute for Social Science Research.*

In early 2014, the Queensland Mental Health Commission engaged ISSR to undertake research into social housing for individuals with complex needs, including mental health and problematic substance use.

The research gathered information from social housing tenants with complex needs, as well as from their families and supporters, and from people working in the system. Officers from the Department of Housing and Public Works and the Department of Health have also provided information to assist the research project.

This report examines the impact of the Queensland Government's Anti-social behaviour (ASB) management policy on social housing tenants with mental health difficulties and substance abuse problems.

The ASB management policy was introduced into Queensland social housing in 2013 and initiated new sanctions on social housing tenants engaged in disruptive behaviour. The 'three strikes' housing policy stated that, three substantiated incidents of ASB, within a 12-month period, would result in action to end the tenancy.

The project team led by Emeritus Professor Andrew Jones, comprised clinical psychologist and lecturer in the School of Psychology Dr Genevieve Dingle and two ISSR housing researchers – Postdoctoral Research Fellow Dr Cameron Parsell and Research Fellow Ms Rhonda Phillips.

The report, which addressed concerns of the Queensland Mental Health Commissioner, puts forward a number of proposals for improving the ASB policy. These include greater and more consistent use of warnings and improved communication to tenants, ensuring support agencies are well prepared and informed, and more effective collaboration between local offices of the Department of Housing and local mental health services.

LINK TO REPORT:  
[qmhc.qld.gov.au/wp-content/uploads/2014/12/FINAL-report-Review-of-systemic-issues-housing-clients-with-complex-needs-September-2014-ISSR.pdf](http://qmhc.qld.gov.au/wp-content/uploads/2014/12/FINAL-report-Review-of-systemic-issues-housing-clients-with-complex-needs-September-2014-ISSR.pdf)



Brisbane Common Ground



# SOCIAL SCIENCE RESEARCH TO RESOLVE COMPLEX POLICY PROBLEMS

## Professor Head's DORA fellowship to advance research on bridging the gap between policy decision-making and 'wicked' problems

Evidence-based policy expert Professor Brian Head was awarded a highly prestigious Discovery Outstanding Researcher Award (DORA) fellowship for a project on how social science research can help resolve complex policy problems.

The DORA project, 'How social science research can help resolve complex policy problems', is investigating how social science research can enhance policy decision-making on complex social issues, or 'wicked' problems.

Professor Head said that his research team would "explore new approaches to how social science researchers can demonstrate 'value' and benefits to government and other partners, along with processes that help or hinder the productive use of social science research in resolving complex policy problems."

The DORA project builds on international research to provide a deeper understanding of the direct and indirect impacts of social research in policymaking and a previous landmark project, 'The Utilisation of Social Science Research in Policy Development and Program Review' (Head, Cherney & Boreham) that concluded in 2013 with a symposium of project partners from government and academia.

The Australian Research Council (ARC) Linkage Project examined research utilisation within public sector agencies in Australia at both state and national levels and focused on agencies with responsibilities that include human service policies and programs.

The project showed that governments in many countries, including Australia, actively promote and commit to the use of research evidence in social policy development and implementation, but not as much as policymakers would like. The research findings were published in the Impact of Social Sciences blog, one of five multi-author blogs run by the London School of Economics and Political Science (LSE) Public Policy Group in the United Kingdom that provide a hub for researchers, administrative staff, librarians, students, think tanks and government.

The DORA-funded project, 'How social science research can help resolve complex policy problems', will build on findings from the ARC Linkage Project and will focus on the complex, intractable and 'wicked' problems faced by governments. Much of social policy falls into this category of 'wicked' problem, as the causes and effects of the problems and the policies are interrelated and multidimensional.

Professor Head said that "large areas of social policy fall into this category of 'wicked' problem, as the causes and effects of the problems are complex and contested. Moreover, the solutions are likely to be multidimensional, and require changes in thinking and behaviour of stakeholders".

Research assistant and PhD candidate Michele Ferguson, who is working on the project, said, "complex problems in social policy areas such as social welfare, immigration, Indigenous disadvantage,

and climate change adaptation are multi-causal, inherently conflictual, difficult to define and hard to solve for both political and cognitive reasons."

Research will focus on identifying new frameworks for understanding and analysing complex problems, charting new directions for applying research-based expertise to tackling these problems, and demonstrating how social research could better link into complex policymaking processes.

The research team will also develop improved approaches to understanding and measuring the research impact of the social sciences, which is of particular importance as governments and funding bodies increasingly require academics to identify and demonstrate the direct social and economic benefits of publicly funded research.

“Large areas of social policy fall into this category of 'wicked' problem, as the causes and effects of the problems are complex and contested. Moreover, the solutions are likely to be multidimensional, and require changes in thinking and behaviour of stakeholders.”

Professor Head



Professor Head's Policy Analysis team at ISSR (clockwise from left): Michele Ferguson, Tracey Arklay, Stefanie Plage, Jenny Povey, Adrian Cherney, Jenny Bell, Paul Boreham, Brian Head, Jenny Van der Arend



Back row: Dr AJ Lanyon (ABS), Dr John Dungan (DETE), Dr Kate Liley (Goodstart Early Learning), Ms Sally Pritchard (ABS), Ms Monica Pfeffer (ANZSOG), Dr Alex Dordovic (DHS), Professor Brian Head (ISSR), Professor Mark Western (ISSR), Dr Adrian Cherney (UQ), Ms Dawn Schofield (Qld Health), Ms Maureen O'Connor (Qld Health), Ms Emily Cross (Qld Health), Professor Wayne Hall (UQ). Front row: Professor Karen Healy (UQ), Professor Anna Stewart (Griffith University), Dr Mark Lynch (UNE), Ms Linda Apelt (ISSR), Professor Paul Boreham (ISSR). At the evidence-based policymaking symposium.

## >> Social science research to resolve complex policy problems

## Snapshot of survey findings of policymakers and academics from the Utilisation of Social Science Research project survey

### POLICYMAKERS

- 94% Indicated that the internet is an important means of obtaining research information
- 82% Reported difficulties in accessing full-text versions of academic articles and reports
- 81% Agreed that the policymaking process is driven by budgetary considerations
- 71% Perceived that urgent day-to-day issues take precedence over 'long-term' thinking
- 71% Consider it a high priority that the research findings are unbiased when using academic research
- 61% Reported that in the last 12 months they had written a policy-related document that drew on academic research

### ACADEMIC RESEARCHERS

- 84% Agreed that academic reward systems do not adequately recognise dissemination of work to non-academic end-users
- 81% Indicated that the amount of time needed to invest in coordinating the work between different partners in research collaborations is potentially problematic
- 80% Find there are different research orientations between academics and external partners
- 77% Agreed that research partnerships have provided them with opportunities for their research to have an impact on policy and practice
- 73% Agreed that the academic requirement to publish in peer-reviewed journals inhibits a focus on policy and practitioner audiences

#### RELATED LINKS

'How social science research can help resolve complex policy problems' project page, <http://www.issr.uq.edu.au/content/resolving-complex-policy-problems>  
EBP Project, <http://www.issr.uq.edu.au/ebp-home>  
LSE Public Policy Group, <http://www.lse.ac.uk/government/research/resgroups/LSEPublicPolicy/Home.aspx>

# SPINIFEX COLLABORATIVE PROJECT

An innovative and multidisciplinary collaboration of social scientists and scientists

For Professor Paul Memmott, 2014 marked the seventh year of collaboration across the university with a professor from the School of Chemical Engineering and a professor from the School of Agriculture and Food Sciences. Their aim was to unlock the unique properties of the Australian native spinifex grass, once used by Aboriginal Australians for cladding of dwellings and many other purposes.

Professor Memmott established close ties with the Aboriginal people of Camooweal in north-west Queensland in the 1980s and 1990s, when he was involved in land rights and Native Title claims research. It was through these ties that he discovered that the Traditional Owners, the Indjalandji and Dhidhanu, have used spinifex and its resin for hundreds of years.

In 2013-2014, Professor Memmott collaborated with Professors Susanne Schmidt of the School of Agriculture and Food Sciences and Darren Martin of the School of Chemical Engineering in two UQ Collaboration and Industry Engagement Funds: 'Evaluating nitrated nanofibrillated cellulose (NFC) from native spinifex grass as superior propellant materials' and 'Optimised harvesting of spinifex'.

An ARC Discovery Project which began in 2007, 'Towards Novel Biomimetic Building Materials: Evaluating Aboriginal and Western Scientific Knowledge of Spinifex Grasses', marked the beginning of their innovative and multidisciplinary collaboration.

The ARC Discovery Project made important inroads in applying 'biometric theory' – drawing from nature to find new technical solutions – to examine the material properties of spinifex and sustainable applications for these.

At the core of this collaboration was Professor Memmott's link to the Aboriginal people of Camooweal and their local enterprise, the Myuma Group.

The Myuma Group's mission is to sustain Aboriginal people through enterprise development based on country. Since its formation in the 1990s, it has provided employment, training, economic and cultural development opportunities for the greater Camooweal region's Aboriginal communities.

"We see this as an opportunity to lay the foundations for an Indigenous industry. Despite spinifex being a practical and symbolic component of traditional Aboriginal culture, there has been limited interest from wider industry in using this grass as a source of biomaterials," Professor Memmott said.

The research and development of the projects has found that the spiky fibres and sticky resin from the spinifex, if harvested and processed on a commercial scale, has potential uses in the building industry. These include making insulation batts, renewable plastics, rubbers, textiles and composite products.

According to Professor Martin, the tough, spiky spinifex grass needs very little water or fertiliser and survives in poor soils due to its deep roots; this has bred exceptional mechanical properties in the grass.

"The building blocks of spinifex resin at the cellulose level do not need harsh chemical treatments or high energy mechanical processing to be converted into a nanomaterial called nanofibrillated cellulose," Professor Martin said.

"The nanofibrils of spinifex have a high surface area and a single nanofibril is stiffer than Kevlar and has a tensile strength eight times that of steel."

Professor Memmott is an anthropologist and architect and has a joint professorship with ISSR and The School of Architecture. He is also the Director of the Aboriginal Environments Research Centre.

His dual interests led him to specialise in architectural anthropology and the social anthropology of Aboriginal Australia. People-environment relations and how Aboriginal people use space and place have become two of his main fields of research.

“We see this as an opportunity to lay the foundations for an Indigenous industry.”

Professor Paul Memmott, ISSR



Professor Paul Memmott







# AWARDS

## Professors elected to social sciences academy

Professors Lorraine Mazerolle and Paul Memmott were elected as Fellows of the Academy of the Social Sciences in Australia (ASSA).

Fellows of ASSA are chosen by their peers through a long and rigorous selection process and are recognised nationally and internationally for their high level of distinction.

Professor Mazerolle is an Australian Research Council Laureate Fellow who leads the Institute's Policing and Security Research research program and is also a chief investigator at the Life Course Centre.

Professor Memmott is the Director of the Aboriginal Environments Research Centre and jointly appointed with ISSR and The School of Architecture.

## Dr Jason Ferris awarded an NHMRC Early Career Award

Senior Research Fellow Dr Jason Ferris, who leads the Drug, Alcohol and Crime Research theme within the Policing and Security research program, was awarded a four-year National Health and Medical Research Council (NHMRC) Early Career Award valued at \$309,436 in October 2014.

The award for Dr Ferris supports his research on methamphetamine (MA) manufacture in clandestine laboratories (clan labs). It is also the first NHMRC fellowship awarded to an ISSR researcher.

Dr Ferris will use the funding to provide an evidence-base for informing policy and program development to reduce MA manufacture and the harm it causes. The year of 2014 was one of successive wins for Dr Ferris. In July his PhD was conferred, one month later he received a UQ Postdoctoral Research Fellowship, and this was followed by a Humanities and Social Science Research Innovation Award in September.

## DECRA for Dr Cameron Parsell

Leader of the ISSR Social Wellbeing, Health and Housing research program, Dr Cameron Parsell, was awarded a Discovery Early Career Researcher Award (DECRA) of \$388,376.

His project aims to produce evidence and to provide theoretical and policy-relevant knowledge about how people are able to remove themselves from chronic homelessness and obtain housing.

The research is to be based on first-person accounts and aims to help reduce homelessness and improve wellbeing, and social and economic participation for excluded individuals.



Induction of new Fellows into the Academy of the Social Sciences in Australia at University House, Australian National University Canberra on 11 November, 2014.



DECRA recipient Dr Cameron Parsell



## Discovery Award

Dr Kelly Fielding, who is an ISSR senior research fellow and ARC Future Fellow specialising in environmental psychology, was jointly awarded a Discovery Project Award valued at \$192,300 with Professor Matthew Hornsey from the School of Psychology.

The research will examine the motivation behind why people hold on to non-scientific beliefs, despite being presented with extensive evidence. It will test interventions designed to challenge these underlying motives, especially as they apply to beliefs about the environment and sustainability.

## Family changes and wellbeing Future Fellowship

Dr Belinda Hewitt was awarded an ARC Future Fellowship in July in the highly competitive grant scheme. It will provide \$675,736 for her project 'Enhancing wellbeing over the family life course'.

The Fellowship will enable ISSR Senior Fellow, Dr Hewitt, to extend her longitudinal research on family life and the effects of major life course transitions such as relationship formation, marriage breakup and the birth of children.

Dr Hewitt will build on the research and data gained in the Institute's Paid Parental Leave Scheme Evaluation and the follow-up study, Millennium Mums, which she is leading.

Through national and international collaborations with research experts in the field, engagement with policy experts in the Department of Social Services and practitioners, the research will inform the development of public policy. It will also guide targeted interventions to improve the health and quality of life of individuals as they experience family change.



Dr Kelly Fielding



Dr Belinda Hewitt

## Research and innovation awards

Two of the Institute's researchers were recognised at the Faculty of Humanities and Social Sciences annual awards.

Research Fellow Dr Andrew Smith was awarded the Research Engagement Award, which recognises research that can translate into benefits for the broader community beyond academia and/or disseminate significant non-traditional research outcomes and/or create significant connections or networks that have substantial impact.

He has developed the programs Leximancer, Harvest and Discursis which are in widespread use in fields from criminal intelligence to healthcare.

Senior Research Fellow Dr Jason Ferris was awarded a Highly Commended Early Career Research Award which recognises significant research contributions made by an early career researcher who has demonstrated outstanding research relative to opportunity.

## Outstanding honours students

Georgie Bingham was awarded the John Western TASA (The Australian Sociological Association) Sociology Prize, at an awards ceremony at the School of Social Science, after topping her 2014 honours degree.

The John Western TASA Sociology Prize is awarded to a student who completes a four-year honours degree with a single or extended major in sociology, and who achieves the highest mark for their honours thesis and coursework component.

Ms Bingham was supervised by Professor Janeen Baxter and Dr Paco Perales.

Dr Jason Ferris and Dr Andrew Smith





# RHD STUDENTS

## FIRST INTAKE OF RHDs

The beginning of 2014 marked the first intake of Research and Higher Degree (RHD) students that were able to directly enrol with ISSR, enabling the Institute to create a distinct research training experience.

ISSR welcomed the first intake of RHDs. The students are working on a diverse range of topics including family health, hate crime, water-sensitive cities, Aboriginal housing, social statistics and inequality.

Becoming an enrolling organisation was a milestone for the Institute, providing opportunities to mentor and train future researchers. ISSR's aspiration is to produce RHD graduates who are not only substantive experts in their fields but have transferable skills that are valued by universities, government, industry and the community sector.

The following is a snapshot of some of our students' major accomplishments in 2014:

### Most Inspiring International Student of Australia award

In July 2014, PhD student Eryln Macarayan was named 'Most Inspiring International Student of Australia' by the Council of International Students Australia.

In 2014, she was also appointed as a 'Brisbane International Student Ambassador' by the Brisbane City Council Lord Mayor and recognised as a young leader in global health by the Health Systems Global Board in Cape Town, South Africa.

In her PhD studies, Ms Macarayan is working on population health metrics and global health systems performance monitoring and evaluation. As a self-proclaimed 'health activist', she is passionate about strengthening health system capacities across low- and middle-income countries through her research, social media advocacy and involvement in various professional, community and international organisations.

### Global Café Youth Forum

PhD candidate Susann Wiedlitzka, a 2014 Three Minute Thesis (3MT®) competition finalist, was invited to attend Brisbane's Global Café Youth Forum 'Bringing the Future to Life'. It was hosted by the Brisbane City Council to coincide with the Brisbane G20 Leaders Summit in November.

The Youth Forum brought together many inspiring young speakers, leading thinkers and entrepreneurs to network, share success stories and discuss global issues. Ms Wiedlitzka also had the opportunity to present her research at the American Society of Criminology in San Francisco the following week.

### Three awards for Dr Creagh

Dr Sue Creagh, who received the UQ Deans award in 2013 for Research Higher Degree Excellence, this year received three awards.

She received the 2014 Penny McKay Memorial Award for Best Thesis in Language Education. The award is for an outstanding doctoral which benefits the teaching and learning of second/additional languages in Australian schools, including Indigenous languages, community languages, foreign languages, Standard Australian English as an additional language or variety, and English as a foreign language.

She also received the Ray Debus Award for Doctoral Research in Education from the Australian Association for Research in Education, (AARE) which recognises excellence in educational research by doctoral students. For her paper, 'A critical analysis of problems with the LBOTE category on the NAPLaN test', Dr Creagh received the Springer Award for the Best Paper published in The Australian Educational Researcher (March 2014, Volume 41, Issue 1, pp1-23).

Dr Creagh, before completing a PhD, worked for many years as a teacher in the field of English as a Second Language and is now Postdoctoral Research Fellow at ISSR, teaching in the School of Education and working on a signature ISSR project for The Smith Family, Learning catalysts: Improving educational outcomes for disadvantaged children.



Best paper

PhD candidate Jenny van der Arend, supervised by Professor Brian Head, was awarded best paper at the 2014 Public Policy Network (PPN) Graduate Conference in Canberra in January. The award is organised by The Australian and New Zealand School of Government and is based on written feedback by academics.

The award also drew attention to ISSR's Australian Research Council Linkage project, 'Utilisation of Social Science Research' that the winning paper and PhD project draws from.

The Institute competed in the annual Three Minute Thesis (3MT®) competition that challenges RHD students to present their research topic in a three-minute 'grab' that is both compelling and intelligible to a generalist audience.

The winner and People's Choice favourite was Susann Wiedlitzka, whose research interests are criminal justice and prejudiced motivated crime. Her topic was, 'The legislative context of prejudice motivated victimisation: The shaping of citizen perceptions of police legitimacy and the decision to report'.

Ms Wiedlitzka was also awarded the Wildcard Finalist in The University of Queensland 3MT® and the People's Choice award in the Faculty of Humanities and Social Sciences 3MT® Competition.



TOP: Left, Dr Angela Higginson introducing the 3MT.  
Right, Brisbane Global Cafe.

BOTTOM: Left, Professor Gerry Stoker presenting Ms van der Arend with the best paper award.  
Right, Global Youth Forum, Cloeanne Spencer, Susann Wiedlitzka and Jillian Kenny

RHD STUDENT LIST

Candidate	Supervisor	Project title
Amanda Acutt	Prof Lorraine Mazerolle Dr Emma Antrobus Dr Sarah Bennett	Truancy, truancy laws and interpretations of policy: an exploration of third party policing legal levers within the context of a randomised field trial
Laura Bedford	Prof Lorraine Mazerolle Dr Emma Antrobus Dr Sarah Bennett	Randomised controlled trials in policing: an organisational learning perspective
Daniel Caetano	Dr Angela Higginson Prof Lorraine Mazerolle	Electronic eyes: what do they see? The relations between electronic surveillance and spatial distribution of crime in Brazilian urban settings
Laetitia Coles	Dr Belinda Hewitt Prof Bill Martin	What flexibility arrangements are available to employed fathers after the birth of a baby, and how do these arrangements help facilitate father involvement in household chores and caring work
Shane Dinsdale	Dr Bernard Baffour Prof Michele Haynes Prof Mark Western	Statistical approaches in combining data from dual-frame social surveys in Australia
Yangtao Huang	Prof Mark Western Dr Francisco Perales Perez	Maternal education asset holdings and labour force participation: gender inequality and intergenerational transmission of poverty among immigrants in Australia
Kate Leslie	Prof Lorraine Mazerolle Dr Emma Antrobus Dr Sarah Bennett	Getting kids back to school: The role of self-efficacy and social support in achieving family group conference agreement outcomes
Poh Ping Lim	Prof Mark Western Dr Bernard Baffour Prof Michele Haynes	An activity-based microsimulation model of travel demand in Australian capital cities
Yan Lam Lo	Dr Suzanna Ramirez Dr Angela Higginson	A comparative study of ecology of child abuse and neglect in immigrant Chinese families in Hong Kong and Australia
Eduardo Lucio	Prof Michele Haynes Dr Bernard Baffour	Design and analysis of longitudinal social surveys for hard to reach populations
Erlyn Macarayan	Prof Mark Western Dr Melissa Gail Curley	Health system performance in low and middle income countries
Louise Marquart-Wilson	Prof Michele Haynes Dr Peter Baker	Evaluating and extending statistical methods for modelling dynamic relationships in complex longitudinal survey designs: applications in health and social sciences
Arturo Jr Martinez	Prof Mark Western Prof Michele Haynes Dr Wojtek Tomaszewski	Exploring patterns of social mobility in Asia
David Mount	Dr Angela Higginson Prof Lorraine Mazerolle	Serious crimes in Australia – assessing investigative success
Martin O'Flaherty	Prof Janeen Baxter Dr Gavin Turrell Prof Michele Haynes	For richer or poorer, in sickness and in health: the role of life course family processes in health equality
Deborah Oxlade	Dr Cameron Parsell Ms Maree Anne Petersen Prof Mark Chakrit Western	Housing security among retired ex-service households of Queensland
Emina Prguda	Dr Emma Antrobus Dr Sarah Bennett Ms Kylie Rene Burke	Design and evaluation of a parenting program for parents in the criminal justice system probation and parole
Tracy Schultz	A/Prof Kelly Fielding	Images that engage communities in sustainable urban water management
Daniel Sharp	Dr Suzanna Ramirez	The architecture of child abuse reporting: from relying on people's sense of dignity to mandatory reporting



Candidate	Supervisor	Project title
<b>Agnieszka Sobolewska</b>	Prof Lorraine Mazerolle Dr Emma Antrobus Dr Sarah Bennett	Lockstep: the role of youth networks in truancy, co-offending and crime/social control interventions
<b>Melanie Spallek</b>	Prof Michele Haynes Prof Andrew Eric Jones A/Prof Maria Zadoroznyj	Interrelationships among home ownership and early family events in Australia
<b>Susann Wiedlitzka</b>	Prof Lorraine Mazerolle Dr Suzanna Ramirez Dr Toby Miles-Johnson	The legislative context of prejudice motivated victimisation: the shaping of citizen perceptions of police legitimacy and the decision to report
Principal supervisor in ISSR (candidate enrolled elsewhere)		
<b>Linda Apelt</b>	Prof Brian Head Prof Stephen Bell Dr Donna McDonald	The evolution of disability policy reform in Australia
<b>Rodger Barnes</b>	Prof Paul Memmott Prof David Brereton	Implementation and outcomes of the Granites mining agreement with Aboriginal people
<b>Jennifer Bell</b>	Prof Brian Head Prof Paul Boreham Dr Adrian Cherney	Knowledge brokering: bridging the gap between academia and policy making in Australia.
<b>Megan Bissing-Olson</b>	A/Prof Kelly Fielding Dr Aarti Iyer	Relationships between environmental attitudes, values and your behaviour
<b>Malcolm Connolly</b>	Prof Paul Memmott Prof Ian Lilley Prof Susanne Schmidt	Understanding the need for establishing core refuges in spinifex grasslands for the production of resin by Aboriginal communities in north-west Queensland
<b>Anna Cooke</b>	A/Prof Kelly Fielding A/Prof Winnifred Louis	Supporting climate change relevant pro-environmental behaviour with the theory of planned behaviour
<b>Jodie Curth</b>	Prof Paul Boreham Dr Volker Boege	The AFP and capacity building: Locating the goal posts in a foreign policy space
<b>Jenine Godwin</b>	Prof Paul Memmott Dr Daphne Nash Dr Cameron Parsell	Livin? the DJ Way: Aboriginal housing and health in Dajarra
<b>Vivian Hauser</b>	Prof Paul Memmott Dr Daphne Nash	Indigenous community-based sustainable housing initiatives: lessons from North American practices
<b>Bronwyn Herbert</b>	Dr Cameron Parsell Prof Jill Wilson	Breaking the homeless cycle: the past, present and future effects on families experiencing homelessness
<b>Megan Hooper</b>	A/Prof Kelly Fielding Prof Jolanda Jetten	Understanding volunteers? Decisions in the workplace: the role of individual, social identity, and organisational variables
<b>Charmaine Ilaiu Talei</b>	Prof Paul Memmott Dr Timothy O'Rourke	Coconut construction: Tongan and Fijian Architecture
<b>Willem Janse Van Rensburg</b>	Prof Brian Head Dr Ian Ward	Scepticism about anthropocentric climate disruption: a conceptual explanation
<b>Mithila Karmaker</b>	Dr Cameron Parsell Dr Gai Harrison Dr Judith Griffiths	Immigrants in the private rental market of Australia: Pathways, barriers and experiences
<b>Nita Lauren</b>	A/Prof Kelly Fielding A/Prof Winnifred Louis Dr Liam Smith	Supporting climate change relevant pro-environmental behaviour with the theory of planned behaviour
<b>Bradley Lewis</b>	Prof Brian Head Prof Stephen Bell	Developing a spatial model to enhance emergency services delivery response
<b>Seonaid Linn</b>	Dr Silke Meyer A/Prof David Fryer	'Lived experience', peer support/ mutual aid and subjectivity: Collaborative critical action research with mental health service consumers
<b>Maelisa McNeil</b>	Prof Janeen Baxter Dr Belinda Hewitt	The relationship between marriage, relationship transitions, and health and wellbeing.

Candidate	Supervisor	Project title
<b>Thongdeuane Nanthanavone</b>	Dr Cameron Parsell Dr Roselyn Melville Dr John Owen Dr Peter Westoby	Exploring local leadership in Lao-based INGOs
<b>Marie Penny</b>	Prof Paul Memmott	Effective community participation in post-disaster re-construction
<b>Rose-Marie Stambe</b>	Dr Silke Meyer A/Prof David Fryer	The affective-discursive practices of unemployment: Mapping embodied subjectively within the training room
<b>Jenny van der Arend</b>	Prof Brian Head Prof Paul Boreham Dr Adrian Cherney	Policy-maker perspectives on the use of externally produced social science research to inform policy development and program review – the factors that support its effective utilisation

# WANT TO MAKE A DIFFERENCE?

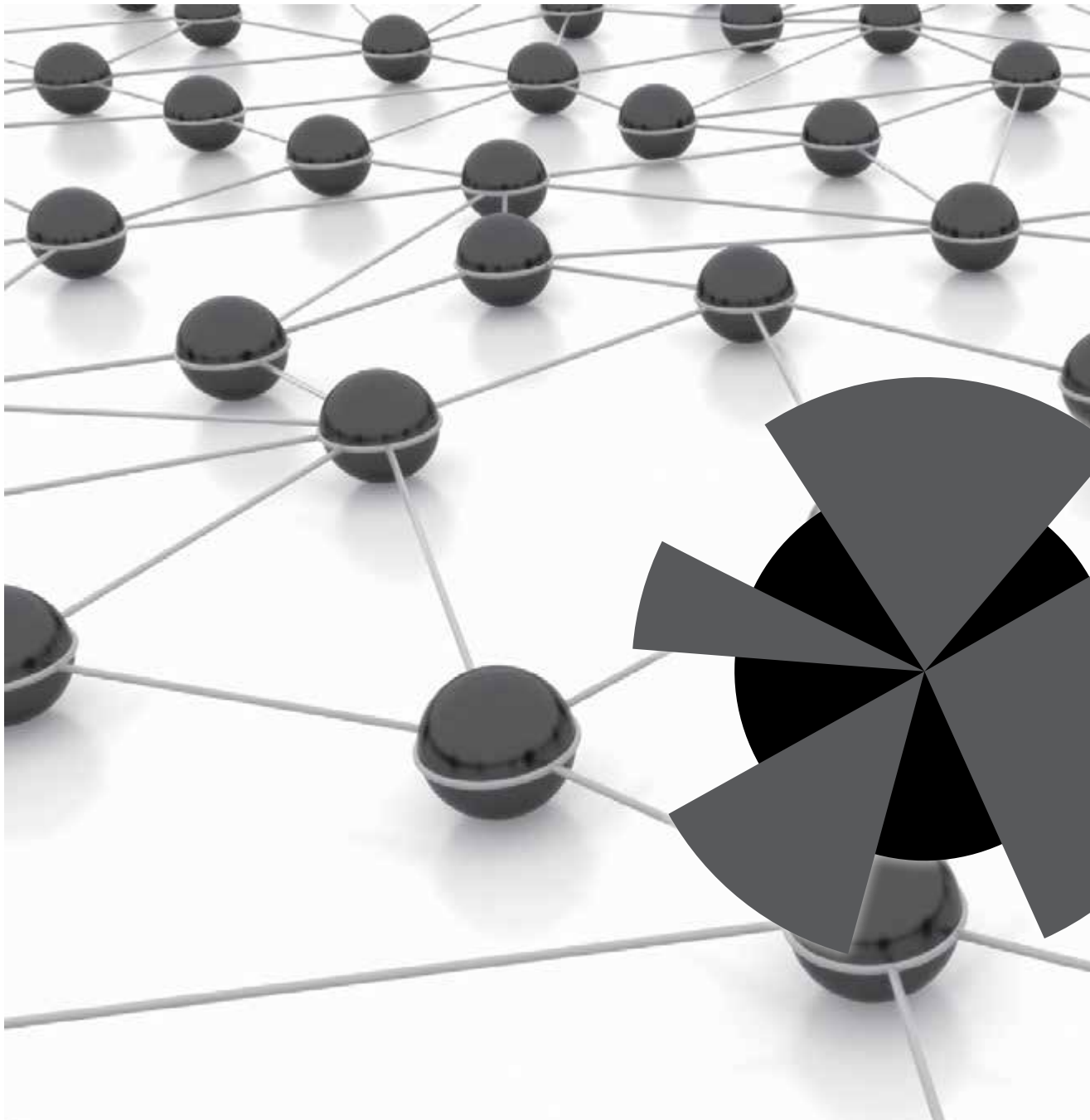
Enquire about postgraduate studies with ISSR  
[www.issr.uq.edu.au/RHD](http://www.issr.uq.edu.au/RHD)



*The professors at ISSR are experts in their fields and have lots of collaborations around the world. This brings out your research strengths and gives you an advantage.*

*They're very understanding and passionate about their research.*

*PhD Candidate, Eryln Macarayan*



# RESEARCH SERVICES AND INNOVATION

## RESEARCH SERVICES AND INNOVATION

The Institute is committed to building the capacity of our stakeholders to use social research in more advanced and meaningful ways. ISSR provides training, survey research and advisory services that support government, industry and academics to better use research evidence and make informed decisions.

Highlight achievements from 2014 are outlined below and we aim to further deliver our service offerings in these areas.

### Methods for Social Analysis and Statistics courses

The Methods for Social Analysis and Statistics (MFSAS), a short-course research methods program offered by ISSR, grew from strength to strength in its second year with the delivery of 28 courses.

In the Institute's seven-year review in 2014, it was put forward that the MFSAS course program could serve as a flagship project, and help diversify and grow the Institute's service offerings

The MFSAS program is designed to provide skills development training modules that build the statistical capabilities of people working in social policy across industry, government and the academic sector.

Professor Haynes, who leads the MFSAS program, continued to expand the program's reach to public sector professionals this year, including government departments, agencies and NGOs. Feedback received from course attendees shows that they come away

from MFSAS courses with better evidence and more robust predictions to improve policies and programs.

The program covers introductory, applied and advanced levels of research methods and data analysis. A new course on Stata was offered this year. Some of the most popular workshops are the Leximancer courses, which draw on the text analytics expertise of Sue York, ISSR's Research Services Manager; and Andrew Smith, Senior Scientific Officer at ISSR and inventor of Leximancer.

Courses also offer flexibility and content is customised to client needs. In 2014, we customised five courses for government, industry and the higher education sector delivered offsite at clients' workplaces. Leximancer courses are often delivered to groups at client workplaces and by webinar.

A successful five-day Longitudinal Data Analysis (LDA) course in 2014 was held in November, had full attendance and

very positive feedback. The course was originally developed for the Department of Social Services and delivered to internal departmental users of longitudinal data in 2013 and 2014.

The November LDA course was the last of 28 MFSAS courses that we delivered in 2014, and wrapped up a very big year for this growing area of activity in ISSR.

MFSAS is also benefiting research higher degree (RHD) students. In 2014, ISSR enrolled RHD students for the first time, and our ability to provide high quality methods training to new students via MFSAS is a vital component in the Institute's RHD strategy. This is enabling us to develop future social scientists with world-class research skills. The training also equips RHD students with skills to tackle their immediate research projects and theses, and elevate their competitiveness for future academic or professional careers.

Stream A - Introductory	Stream B - Applied	Stream C - Advanced	Stream D - Software
A1 Understanding Data	B1 Recognising Differences	C1 Modelling Cross-Sectional Data	D1 Introduction to Leximancer
A2 Gathering Quantitative Data	B2 Understanding Relationships	C2 Multilevel Models: Clustered & Longitudinal Data	D2 Leximancer Next Steps
A3 Gathering Qualitative Data	B3 Recognising Changes	C3 Longitudinal Data Analysis: Intro to Panel Regression	D3 Leximancer Masterclass
	B4 Systematic Reviews	C5 Longitudinal Data Analysis	D4 Stata: An Introduction
			D5 Stata: Code and Graphics

MFSAS Courses at a glance

RELATED LINKS

[www.issr.uq.edu.au/mfsas](http://www.issr.uq.edu.au/mfsas)

MFSAS Training Coordinator, Cara Herington, [c.herington@uq.edu.au](mailto:c.herington@uq.edu.au)



## Survey research services

In 2014, ISSR provided a notable range of commercial research services to both national and international clients from government, non-government organisations and the private sector. Much of this work has been driven by the Institute's commercial survey research facility; with 35 Computer Assisted Telephone Interview stations, it is the nation's largest university-based resource of this type.

This year, we continued to consolidate our reputation as an innovator in survey research methodologies, namely dual-frame surveys. These surveys help ensure that the growing number of participants with only mobile telephones are included in our research and that we account for their characteristics through survey weighting to achieve a representative sample.

This methodology was put to the test in research comparing how social networks affect wellbeing in developed and developing countries. From a dual-frame sample of 4,000, ISSR achieved a robust response rate to a new national survey with respondents participating via mobile and landline telephones.

We also extended our reach into business respondent surveys. We were contracted to look at customer impact and customer satisfaction for users of the Queensland Government's Business and Industry Portal. In a cross-sectional study, ISSR honed its approach to B2B research to deliver a bespoke and highly professional project. The project not only enables government to learn about how businesses are currently using this portal, but also to understand emerging challenges facing Queensland businesses over time.

We used our capacity to conduct surveys using multiple modes by doing surveys online (such as She Speaks leadership survey of females aged 15-30 for the YWCA), via telephone (such as a longitudinal survey of respondents who have experienced motor accident injuries) and via post (including survey mail-outs for a collaborative research project with The Smith Family). A number of our surveys involved mixed modes, which are designed to help improve response rates and cross-check findings. ISSR also applied a mixed mode online and telephone survey approach to deliver a reliable profile and needs assessment of home and community care clients in Tasmania to help government better design services.

## Cultural advising

Professor Paul Memmott provides expert services to organisations in relation to Native Title claims in Australia. He has a deep knowledge in this area, having prepared research on descent groups, sacred knowledge, and the rights and interests of present day claimants.

Professor Memmott previously served as the consulting anthropologist on a number of successful Native Title claims. His expertise in community capacity building and cultural planning is in demand by agencies looking to provide effective social services to Aboriginal and Torres Strait Islander communities.

Through his professional background in architecture, he offers valuable contributions to the design and evaluation of culturally appropriate spaces for hospitals and healthcare facilities. He has provided consultancy services on hospital master planning in Alice Springs, Weipa and Mt Isa.

This year the ISSR Innovation and Commercial Development team developed an ARC Discovery application, which would be led by Professor Memmott. Its focus was on healing spaces and how health service settings may obstruct Indigenous wellbeing by intimidating clients and discouraging early presentation and return visits.



## Narratif

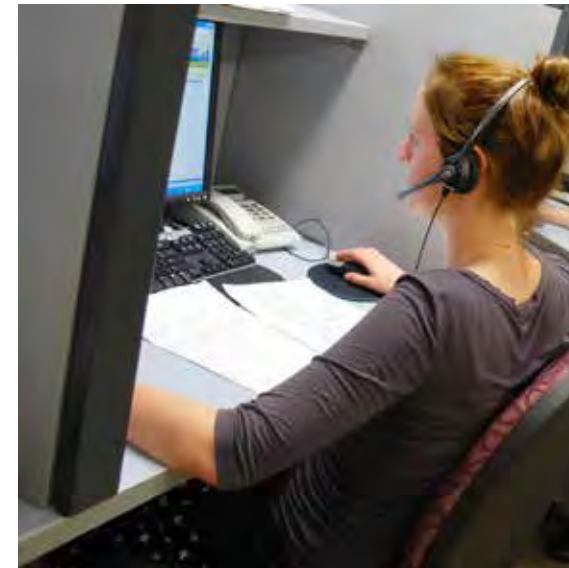
Dr Andrew Smith's Hypermancer technology found new ways to market in 2014, through a software platform that tracks real-time Twitter conversations.

Narratif was developed in 2014 and made Dr Smith's Hypermancer technology more accessible to end-users. It tracks topics in real-time discussions on social media applications. By sorting relevant hashtags, mentions and keywords quickly, Narratif helps find the exact conversations users are looking for and what people are actually saying about a story at that moment in time, presenting conversations in a graphic format that is easy to follow.

Dr Smith has built a reputation for developing novel technology applications based on a flexible and dynamic model of human recollection called Schema Memory. In the same way that memories adapt to help humans choose the appropriate behaviour in a given situation the next time it occurs, Narratif groups conversations into contexts so that users can quickly determine which one is the most relevant for their needs.

Narratif has particular value for journalism, brand management and business development. Developed in collaboration with Professor Janet Wiles, the software is being commercialised through UniQuest, with venture capital investment from the start-up company Hypermancer Pty Ltd.

Narratif extends Dr Smith's strong track record in text analytics. His initial work in this area was funded by the Asian Office of Aerospace Research and Development. He is also the chief scientist and founder of text mining software start-up, Leximancer.







## INTERNATIONAL ENGAGEMENT

## ISSR'S INTERNATIONAL LINKAGES CONTINUE TO GROW

The Institute for Social Science Research continued to increase its international activity in 2014. This was largely the result of increased informal networks and collaborations by academic staff, as evidenced by the large increase in journal articles with international co-authors (5 in 2012, 29 in 2014), and an increase in the proportion of staff with international links (from 69% in 2012 to 86% in 2014).

ISSR has strong links with academic institutions such as the University of Cambridge, the University of California and the University of Victoria BC. ISSR also engaged with 154 international institutions (comprising universities, associations, funding bodies and other organisations).

The staff and students within ISSR continue to be highly international – 44% of academic staff obtained their PhDs outside of Australia and 22% of RHD students are from other countries.

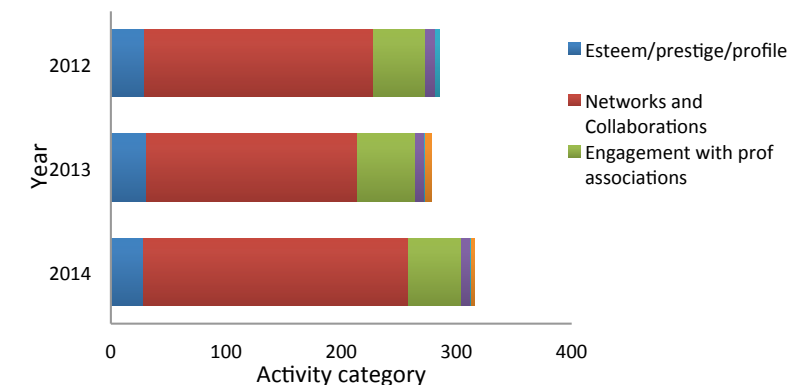


Figure 1: Overview of ISSR internationalisation activities

### International collaboration

The level of engagement by country is highlighted below in Figure 2. In 2014, ISSR staff engaged and collaborated with 28 countries including five countries for the first time: Cambodia, Taiwan, Bolivia, Mexico and Papua New Guinea.



Figure 2: Map showing countries collaborating with ISSR (major collaborations in red)

International university and institutional collaborations

During 2014, ISSR engaged with 154 international institutions (comprising universities, associations, funding bodies etc.). The table below shows the top 10 universities and top 5 'other' associations that ISSR collaborated with in 2014.

Top 10 universities*	Interactions	Top 5 non-university institutes/ associations	Interactions
University of Cambridge	6	American Society of Criminology	10
University of California, Irvine	6	International Sociological Association	8
Utrecht University	6	American Sociological Association	4
Oxford University	5	NZ Police	4
Harvard University	4	Campbell Collaboration	3
University of Arizona	4		
University of Washington	4		
McGill University	4		
University of Essex	4		
Erasmus University	3		

*\*On UQ's list of Global Top 10 Highly Engaged Partners across priority country/region categories as in UQ's Global Strategy and Internationalisation plan*

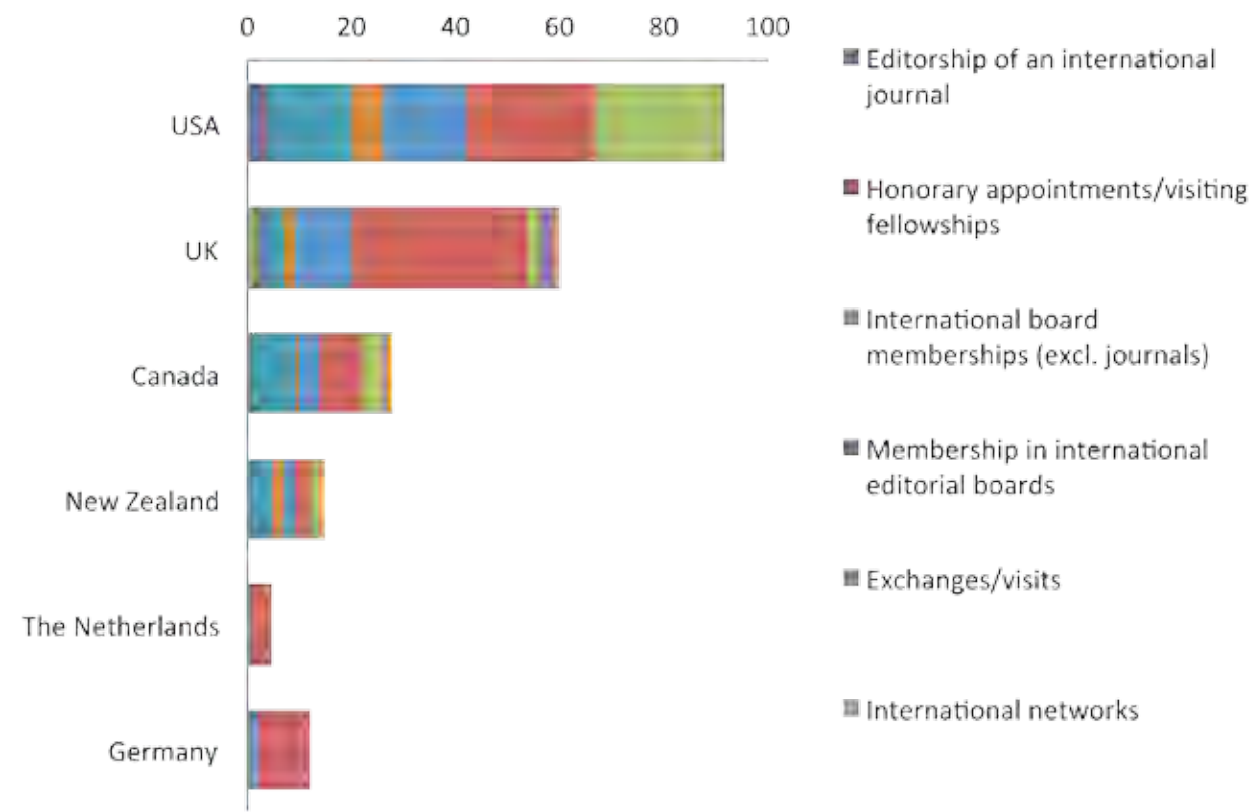


Figure 3: Activity profiles for top 6 countries for ISSR in 2014

INTERNATIONAL VISITORS



ISSR hosted visits from 14 international academics from five different countries (USA, UK, Germany, New Zealand, and Malaysia). ISSR has formalised relationships with leading researchers in inequality, evidence-based policy, social policy and longitudinal data experts. These include Professors Greg Duncan from the University of Michigan, Rebekah Levine Coley from Boston College, Harvey Goldstein from University of Bristol, Heather Laurie from University of Essex and David Weisburd from The Hebrew University of Jerusalem.

ISSR has an international visitors program where international experts visit the Institute to foster research collaboration and interaction with academics and research and higher degree students.

- The following scholars delivered seminars as part of the ISSR Seminar Program.
- ▶ **Professor David Kirp** is the James D. Marver Professor of Public Policy at the University of California at Berkeley presented the seminar 'Kids First: Five Big Ideas for Transforming Children's Lives and Australia's Future'. (October 2014)
  - ▶ **Dr Sarah McQueen** is a research fellow at the Scottish Centre for Crime and Justice Research, based at the University of Edinburgh Law School presented the seminar 'ScotCET: Replicating the Queensland Community Engagement Trial in Scotland'. (August 2014)
  - ▶ **Rob Ralphs** from Manchester Metropolitan University presented the seminar 'UK Gang Policy and Policing Practices: "Ending gangs" or perpetuating them?'. (July 2014)
  - ▶ **Peter Neyroud** from the Institute of Criminology, University of Cambridge presented the seminar 'Reducing Crime with Operation Turning Point'. (March 2014)

- The following scholars/experts visited ISSR to collaborate on research:
- Ms Ingrid McGuffog, SUNY Brockport, USA
  - Ms Sarah McQueen, University of Edinburgh, UK
  - Dr Borja Del Pozo Cruz, University of Auckland, New Zealand
  - Mr Alex Murray, Birmingham Police, UK
  - Mr Michael Woolcock, World Bank, USA
  - Prof Muchd Hadhil Nuruddin, Universiti Teknologi Petronas, Malaysia
  - Prof Nasir Shafiq, Universiti Teknologi Petronas, Malaysia
  - Dr Mohamed Hasnain, Universiti Teknologi Petronas, Malaysia
  - Dr Subarna Sivapalan, Universiti Teknologi Petronas, Malaysia.

*International visitors, from top: David Kirp, Sarah McQueen, Rob Ralphs, Peter Neyroud*





# EVENTS

## MASTERCLASS IN POLICING

Senior police and criminologists from Australia and the United Kingdom attended the Masterclass in Evidence Based Policing. It workshopped the skills needed to develop policing experiments so that evidence can be used to inform and evaluate policing practice.

The Masterclass is a platform to build a collective understanding and appreciation of experimental evaluation and an opportunity to develop a community of practice and formal and informal networks across countries (March 19).

## ENVIRONMENTAL FORUM

An interdisciplinary forum, 'Tackling the big environmental challenges forum' brought together researchers from social science and natural science disciplines to talk about UQ research on energy solutions, climate scepticism, resilience and environmental decisions and governance, Professor Carmen Lawrence addressed the forum.

Professor Lawrence, who served for 21 years in state and federal politics and is now the Winthrop Professor of Psychology at the University of Western Australia, highlighted the need for those in the social sciences to be active in the political process if they aim to effect policy change. (June 2014)

## DATA LINKAGE NATIONAL WORKSHOP

The first in a series of Data Resource Workshops, organised by ISSR and the Life Course Centre brought together senior representatives and partners from the Centre, Australian and state government agencies, data custodians, data integration authorities and non-government organisations.

The focus of the workshop was data integration and it explored ways to combine and link datasets from different sources to build more comprehensive data resources. (8 October)





## Reducing crime with Operation Turning Point

*Peter Neyroud is an academic-practitioner in policing, now based at the Institute of Criminology, University of Cambridge*

International criminology and evidence-based policing expert Peter Neyroud presented a seminar about the randomised control trial, Operation Turning Point, which compares the effectiveness of court prosecution with a structured diversion to a deferred prosecution linked to a 'Turning Point Contract'.

He was also a key presenter at the 2014 Masterclass in Evidence Based Policing in March in Sydney.

Peter Neyroud was awarded the Queen's Police Medal for services to the police in 2004 after 30 years of service and is a widely published author on policing. He was also the Chief Executive Officer for the National Policing Improvement Agency (NPIA). (March 2014)

## Indigenous homelessness in regional Australia

*Professor Paul Memmott, Director of the Aboriginal Environments Research Centre jointly for the School of Architecture and ISSR*

This seminar summarised a series of research reports conducted for the Australian Department of Families, Housing, Community Services and Indigenous Affairs (FaHCSIA) that investigated Indigenous homelessness in regional Australia, and the effectiveness and appropriateness of service responses.

The research found that the Indigenous homeless population in regional Australia is underestimated and that special regional services are needed for homeless Indigenous Australians. (June 2014)

## An unsettled bargain? Mothers' perception of justice and fairness in paid work

*Professor Bill Martin, Program Leader for the Education and Employment Research Program*

This seminar outlined a paper investigating mothers' employment arrangements around their return to work following childbirth. It focused on mothers' perceptions of the justice and fairness of flexibility arrangements they commonly enter into upon return to work. (April 2014)

## Household labour, perceptions of fairness and conflict

*Tsui-o Tai, Postdoctoral fellow; Janeen Baxter, Professor of Sociology at ISSR and the School of Social Science*

The seminar explored the different concerns and perceptions of men and women over family arrangements, including who does what around the home. Their research shows the importance of macro-level factors; such as societal levels of gender ideology and the female-male earned income ratio, in determining the relationship between perceptions of fairness and housework conflict. (May 2014)

## UK Gang Policy and Policing Practices: 'Ending gangs' or perpetuating them?

*Dr Rob Ralphs, a senior criminology lecturer at the Policy Evaluation and Research Unit at Manchester Metropolitan University*

This presentation outlined a decade of the author's gang research and gang related community engagement with official data and questioned the current policies and practices employed in the 'war on gangs'. It also reflected on the recent emergence in the UK of US inspired, dedicated police gang units, multi-agency partnerships and gang injunctions. Dr Rob Ralphs has conducted research on UK gangs since 2004 and conducted a three-year ethnographic study 'Youth Gangs in an English City: Social Exclusion, Drugs and Violence' and an exploration of the extent and nature of youth gangs and youth violence in secondary schools and an assessment of the extent and nature of drug dealing and violent gangs in a North West Town. (July 2014)

## ScotCET: Replicating the Queensland Community Engagement Trial in Scotland

*Sarah MacQueen is a Research Fellow at the Scottish Centre for Crime and Justice Research, based at the University of Edinburgh Law School*

ScotCET is a Scottish replication of the Queensland Community Engagement Trial (QCET) developed by ISSR researchers and led by the ARC Centre of Policing and Security. The randomised field trials of procedurally just policing testing, both set out to test whether 'procedurally just' encounters between police and citizens improves citizen perceptions of police.

This presentation outlined the process and pitfalls of replication, and discusses the emerging findings, how these might be interpreted and what the implications for future research and policy might be. (August 2014)

## Adaptive responses to complex problems

*Mark Moran, Professor in Development Effectiveness*

This interactive forum addressed public policy dilemmas and encouraged discussion, problem solving and adapting known tools.

Although frontline practitioners are assumed to have the rational, comprehensive and structured means to implement effectively in evidence-based ways, in reality this is rarely the case. The forum looked into how to take this current ad hoc standard of practice to a more proactive and transparent alignment with policy. (September 2014)

## Aboriginal lifeworlds, conditionality and housing outcomes

*Daphne Nash, Research Fellow within the Aboriginal Environments Research Centre and Mark Moran, Professor in Development Effectiveness*

Managing social housing tenancies and home ownership have assumed critical importance as governments move towards greater conditionality in providing services to Indigenous people.

The seminar presented research that examined the interaction between the conditions placed on housing assistance and Aboriginal lifeworlds, and the effects of this on sustainable housing. It explored some of the research findings. (September 2014)

## The Rise of the Renter Nation: The Australian Chapter

*Professor Keith Jacobs (keynote), ARC Future Fellow, The University of Tasmania; Robin Zakharov, Manager at Department of Communities, Child Safety and Disability Services; Penny Carr, Statewide Coordinator, Tenants Queensland Inc.; Dr Maree Peterson, Postdoctoral Research Fellow; Jason Hilder, School of Geography, Planning and Environmental Management; Dr Trisch Short, Dr Peter Walters, Julie Conway, School of Social Science; Dr Kelly Greenop, School of Architecture*

The symposium outlined the challenges arising within the private rental system for disadvantaged groups and mapped an agenda for future research.

Three panel sessions followed the keynote: 'The policy and practitioner perspective', 'Negotiating the private rental sector: challenges for tenants', 'How housing policies and systems work: constraints, opportunities and alternatives' and 'Future research directions'. (October 2014)

## The research impact agenda: The dark art of demonstrating impact

*Michele Ferguson, Research Officer*

The language of impact has become explicit in research funding applications and reporting mechanisms in the UK and Australia. However, governments' attempts to define and measure impact, and to link impact to higher education and research funding, have been controversial. This seminar provided a broad overview of the impact agenda, why it is important, the 'pathways to impact', potential implications for Australian academics, and how social scientists can demonstrate impact. (October 2014)

## SEMINAR PROGRAM

ISSR conducts a regular, research-based seminar program for stakeholders and members of the broad university community.

## SEMINAR PROGRAM

### Public provision or private purchase?

*Maria Zadoroznyj, Associate Professor (with a joint appointment in the School of Social Science and ISSR)*

The seminar examined the extent to which newly parenting women in Queensland rely on market mechanisms for care services that have been, or may still be available, through the public sector.

Mothers' experiences from Queensland case study sites showed that post birth care has been de-medicalised, and the public provision of maternal and infant care has become increasingly limited. (October 2014)

### Kids first: Five Big Ideas for Transforming the Lives of Children

*Professor David Kirp, the James D. Marver Professor of Public Policy at the University of California at Berkeley*

The seminar presented ideas from Professor Kirp's, book 'Kids First: Five Big Ideas for Transforming the Lives of Children', grew out of his work on President Obama's Transition Team. The model has five elements for increasing for the parent-child relationship both social and cultural capital.

The model is based on these five important elements: giving new parents strong support, providing high quality early education, linking schools to their communities and resources, offering a mentor 'caring stable adult' for every youngster and building a nest egg for every newborn for college or career. (October 2014)

### New directions in public finance management in Indigenous affairs

*Leon Yeatman, CEO of Mapoon Aboriginal Shire Council, on Cape York Peninsula; Michael Limerick, Adjunct Associate Professor and a barrister and consultant at Limerick & Associates; Mark Moran, Professor in Development Effectiveness and closely affiliated with the Aboriginal Environment Research Centre.*

The seminar examined how funding models affect the performance of Indigenous organisations in terms of service delivery and the ultimate goal of Closing the Gap.

Government changes and overhauls to funding models for tackling Indigenous disadvantage can produce powerful incentives for organisations, but can also stifle innovation, divert limited resources and narrow accountability. (November 2014)







# PROJECTS

PROJECT TITLE	LEAD ISSR CONTACT	SCHEME/CLIENT	DURATION
Multi-site trials of third party policing: Building the scientific capacity for experimental criminology and evidence-based social policy in Australia	Lorraine Mazerolle	ARC (Australian Research Council) Laureate Fellowship	2010-2015
Children and families over the life course (Life Course Centre)	Janeen Baxter	ARC Centre of Excellence	2014-2021
Resolving complex policy problems: the role of social science	Brian Head	ARC Discovery Outstanding Research Award (DORA)	2014-2016
Social networks in labour markets	Mark Western	ARC Discovery Project	2013-2015
Public responses to alternative water supplies: The role of risk, beliefs and identity	Kelly Fielding	ARC Future Fellowship	2011-2015
Learning Catalysts: Improving educational outcomes for disadvantaged children	Mark Western	ARC Linkage	2013-2016
Improving the sampling and estimation methodologies for dual-frame telephone surveys in Australia	Michele Haynes	ARC Linkage	2013-2016
The relationship between rural living and wellness: What services and supports do older people need?	Maree Petersen	ARC Linkage	2013-2016
Millennium Mums	Belinda Hewitt	ARC Linkage	2013-2016
Enhancing mothers' engagement with the workforce in the preschool years - a longitudinal mothers' survey	Belinda Hewitt	ARC Linkage	2013-2016
Household food safety survey	Jenny Povey	Asian Development Bank (ADB)	2014
Dynamic situation tracking of big data	Andrew Smith	Asian Office of Aerospace Research & Development	2012-2015
Alcohol-related violence rapid review	Jason Ferris	Australian & New Zealand Association of Oral & Maxillofacial Surgeons (ANZOAMS)	2014-2015
Aboriginal housing outcomes	Paul Memmott	Australian Housing and Urban Research Institute (AHURI)	2012-2016
Evaluation of the nature and effectiveness of models of supportive housing	Cameron Parsell	AHURI	2013-2014
Aboriginal housing outcomes, an Indigenous Multi-Year Research Project (IMYRP)	Mark Moran	AHURI	2012-2016
Addressing concentrations of social disadvantage	Andrew Jones	AHURI	2011-2014
Impact of Project STOP on pseudoephedrine diversion	Jason Ferris	Australian Institute of Criminology	2014
Investigating serious crime: What works, what doesn't and for what crime types?	Angela Higginson	Australian Institute of Criminology	2014-2015

&gt;&gt;

## Projects

Public finance management for improved Indigenous governance	Mark Moran	Australian Institute of Health and Welfare (AIHW)	2013-2014
Enhancing risk communication regarding potable water reuse	Brian Head	Australian Wastewater Recycling Centre of Excellence	2011-2014
Primary care givers	Sue York	Bond University	2014
Empowered communities	Mark Moran	Cape York Institute	2014
Policy and planning research for sustainable regions	Brian Head	Collaborative Research Networks and Southern Cross University	2011-2014
Engaging communities with Water Sensitive Cities	Kelly Fielding	Co-operative Research Centre (CRC) for Water Sensitive Cities	2012-2016
Behaviour change for Water Sensitive Cities	Kelly Fielding	CRC for Water Sensitive Cities	2012-2016
Better regulatory frameworks for Water Sensitive Cities	Brian Head	CRC for Water Sensitive Cities	2012-2016
Better governance for complex decision-making	Brian Head	CRC for Water Sensitive Cities	2012-2016
Supportive social housing for older people	Andrew Jones	Department of Family and Community Services, NSW	2014
Development of an evaluation framework for the Health and Hospitals Fund (HHF)	Michele Haynes	Department of Health	2014
Dad and Partner Pay evaluation	Bill Martin	Department of Social Services	2012-2014
Paid Parental Leave Scheme evaluation	Bill Martin	Department of Social Services	2010-2014
Respectful Relationships program evaluation	Michele Haynes	Department of Social Services	2011-2014
Longitudinal analysis	Michele Haynes	Department of Social Services	2014
The case for a new Australian Birth Cohort Study	Mark Western	Department of Social Services	2014
Stronger Relationships evaluation	Belinda Hewitt	Department of Social Services	2014-2015
Queensland Customer Impact Survey	Sue York	Department of Tourism, Major Events, Small Business (DTESB)	2014
Queensland Customer Impact Survey – Wave 2	Sue York	DTESB	2014-2015
Random Breath Testing and alcohol-related traffic crashes	Jason Ferris	Foundation for Alcohol Research and Education Limited (FARE)	2014

&gt;&gt;

## Projects

Social contracts for Indonesian water governance	Brian Head	Indonesian Water Centre	2014-2015
Violent crime in developing countries – a systematic review	Lorraine Mazerolle	International Initiative for Impact Evaluation (3ie)	2011-2014
Youth gang violence in developing countries - a systematic review	Angela Higginson	International Initiative for Impact Evaluation (3ie)	2013-2014
Indigenous development in Bolivia	Mark Moran	International Mining for Development Centre (IM4DC)	2014-2015
Creation of the Global Policing Database	Lorraine Mazerolle	Mayors Office for Policing & Crime	2014-2015
Taking the Pulse survey	Sue York	Medicare Local Perth	2014-2015
Factors influencing social and health outcomes (FISH) after a land transport injury, a longitudinal study	Michele Haynes	Motor Accident Authority (MAA) – NSW	2013-2016
Evaluation of the 'Street to Home' initiative	Andrew Jones	Qld Dept of Housing and Public Works	2011-2014
Evaluation of the Brisbane Common Ground initiative	Cameron Parsell	Queensland Government Department of Housing and Public Works (DHPW)	2013-2015
Research on disengaged students	Bill Martin	Queensland Government Department of Education, Training and Employment	2014
Review of issues for housing clients with complex needs	Andrew Jones	Queensland Mental Health Commission	2014
Darumbal Native Title anthropological report	Paul Memmott	Queensland South Native Title Services Limited	2014-2015
Understanding decisions of doctors to relocate to rural areas	Bill Martin	Rural Health Workforce Australia	2014
School Business Managers Wellbeing Survey	Jenny Povey	School Business Managers Association Queensland	2014
Recreational use of water reservoirs	Mark Western	Seqwater	2014-2015
Tasmanian home and community care program client group analysis	Andrew Jones	Tasmanian Department of Health & Human Services	2014-2015
New and emerging models of tenancy management in remote Aboriginal communities	Rhonda Phillips	University of Tasmania	2013-2014
Identifying effective arrangements for managing remote Aboriginal tenancies	Rhonda Phillips	University of Tasmania	2014-2015
Identifying effective arrangements for managing remote Aboriginal tenancies	Rhonda Phillips	University of Tasmania	2014-2015
YWCA She Speaks Survey	Bernard Baffour	YWCA Australia	2014





# PEOPLE

## EXECUTIVE STAFF



**MARK WESTERN**  
Professor; Director, Institute for Social  
Science Research  
*PhD (The University of Queensland)*  
*Fellow of the Academy of Social Sciences in Australia*

Mark is Director of ISSR and a Fellow of the Academy of Social Sciences in Australia. Mark is a sociologist whose research examines how systems of inequality and disadvantage arise and can be addressed, what matters for economic and social wellbeing, and how institutions such as schools, families, networks and labour markets are involved in these processes. Mark also carries out research in social science methods.

In 2012, he chaired the Education and Human Society Research Evaluation Committee for the Excellence in Research for Australia (ERA) national evaluation of research quality in Australian universities. Mark was a chief investigator in the Centre of Excellence in Policing and Security and is a chief investigator at the Life Course Centre. In addition to those from these two Centres, he has held research grants and research contracts worth over \$20 million.



**JANEEN BAXTER**  
Professor; Director, Life Course Centre  
*PhD (The University of Queensland)*  
*Fellow of the Academy of Social Sciences in Australia*

Janeen is Director of the new ARC Centre of Excellence for Children and Families over the Life Course (the Life Course Centre). As a sociologist, she has pioneered advanced studies in life course and longitudinal analyses. She has more than 20 years' experience researching families, inequality and the life course. Janeen's strong international reputation is built on her innovative work in cross-national analyses of gender inequality as well as longitudinal research that shows how life-course transitions affect social wellbeing. She has a solid track record of high-level research achievement and management expertise.



**MICHELE HAYNES**  
Professor; ReMASS Program Leader  
*PhD (Queensland University of Technology)*

Michele leads ISSR's ReMASS program and is a statistician with over 20 years' experience in the development and application of statistical methodology for the analysing data in the social sciences, particularly for longitudinal and life course research. She oversees the management of the CATI laboratory and the MFSAS suite of professional development workshops at ISSR. Michele leads numerous contract research projects and has a strong track record in winning research grants. She is a chief investigator in the Life Course Centre with current research interests in advancing statistical methodology for modelling life-course transitions and outcomes using large data from linked longitudinal survey and administrative datasets.

## EXECUTIVE STAFF



**BRIAN HEAD**  
Professor; Policy Analysis and Evaluation,  
and Sustainability and Environment,  
Program Leader  
*PhD (University of London)*  
*Fellow of the Academy of Social Sciences in Australia*

Brian joined ISSR in mid-2007 after holding senior roles in government, universities, and the non-government sector. His major interests are evidence-based policy, program evaluation, early intervention and prevention, collaboration and consultation, service delivery, accountability and leadership.

He has strong interests in applied research across many areas of public policy and governance, and is committed to building closer links between the research and policy sectors. Brian currently holds an ARC Discovery Outstanding Researcher Award.



**CORDELIA JACKSON**  
Deputy Director (Operations)

Cordelia has ten years experience in university research, operational and project management. Cordelia is responsible for the operations management of the Institute which includes managing the Institute support staff. With a solid background in financial administration, Cordelia has held multiple positions throughout the University which have provided her with the skills to manage a multidisciplinary research institute. Cordelia also has a strong background in implementing systems to support project management and embed sound business processes to meet organisational requirements.



**BILL MARTIN**  
Professor; Employment and Education  
Program Leader  
*PhD (University of Wisconsin)*

Bill is the leader of ISSR's Employment and Education research program, as well as a Professor of Sociology. He has completed research on the careers of professionals and managers in large Australian companies, Australians' views of work and the labour market, lifetime patterns of skill use, and the changing labour market opportunities for professionals and managers. A particular focus of his recent and current research is in paid care work. Most recently, Bill has led the \$3.2 million evaluation of Paid Parental Leave in Australia.



**LORRAINE MAZEROLLE**  
Professor; Policing and Security Program  
Leader  
*PhD (Rutgers University) ARC Laureate Fellow*

Lorraine is a Research Professor and Policing and Security Program Leader at ISSR and an ARC Laureate Fellow. She is an experimental criminologist with research interests in policing, drug law enforcement, third-party policing, regulatory crime control, displacement of crime, and crime prevention. Lorraine is the Editor-in-Chief of the Journal of Experimental Criminology,

## EXECUTIVE STAFF

**LORRAINE  
MAZEROLLE**  
*(cont.)*

Chair of the American Society of Criminology's Division of Experimental Criminology and an elected Fellow of the Academy of Experimental Criminology. She has won numerous US and Australian national competitive research grants on topics such as community regulation, problem-oriented policing, police technologies, civil remedies, street-level drug enforcement, and policing public housing sites, and she was the Foundation Director and a chief investigator in the ARC Centre of Excellence in Policing and Security.



**SUE MCKELL**  
Deputy Director (Innovation)

Sue leads ISSR's business processes for research development and translation. This includes industry partnerships, funding proposals, contract negotiations, intellectual property protection, and commercialisation. Sue has extensive experience developing major funding initiatives for universities and industry partners, and has worked in senior management positions in commercialisation, knowledge transfer, and communication roles. Sue manages ISSR's Innovation team who provide business development and research management support to Institute staff.



**PAUL MEMMOTT**  
Professor; Director, Aboriginal Environments  
Research Centre  
*PhD (The University of Queensland)*

Paul is an anthropologist/architect and Director of the Aboriginal Environments Research Centre (AERC), a research and resource centre based in UQ's School of Architecture, with staffing and logistical support from ISSR. The AERC has been constructed within the theoretical framework of behaviour– environment studies and environmental psychology that emerged in the 1960s and 1970s. Paul's major research interests are in vernacular architecture and material culture, Aboriginal housing and institutional architecture, Indigenous homelessness and public place dwelling, Indigenous family violence and suicide, and Indigenous geography of place and cultural landscape.



**MARK MORAN**  
Professor; Development Effectiveness  
Research Leader  
*PhD (The University of Queensland)*

Mark took on the role of Professor in Development Effectiveness at ISSR in April 2013. He is closely affiliated with the Aboriginal Environments Research Centre. His career spans academia, not-for-profit organisations, and government and consultancy work. Mark has a unique background of technical and social science research with a degree in civil engineering and a PhD in geography and planning. His primary research focus is the science of adaptive development practice, understanding its capabilities, conditions, frameworks and accountabilities.



## EXECUTIVE STAFF



**CAMERON PARSELL**  
Social Wellbeing, Health & Housing  
Program Leader (Acting)  
*PhD (The University of Queensland) UQ Postdoctoral Research Fellow*

Cameron is the Acting Program Leader of ISSR's Social Wellbeing, Health & Housing research program. He was also Acting Director of the Australian Housing and Urban Research Institute's Queensland Research Centre, and Associate Editor of the Australian Journal of Social Issues. Cameron's primary area of research is homelessness and supportive housing, and he is the co-chief investigator on several national studies that broadly examine the nature and outcomes of newly emerging models of intervention directed toward permanently ending homelessness. He is examining different models and practices of supportive housing and how various non-government stakeholders become involved in and enable the implementation of new approaches to housing delivery. Cameron is particularly interested in conducting ethnographic research, with a focus on policy and practice translation.



**EMMA ANTROBUS**  
Research Fellow, Policing and Security  
Program  
*PhD (The University Of Queensland)*

Emma is a Research Fellow in Lorraine Mazerolle's Laureate Fellowship and the Policing and Security research program at ISSR. She has a background in psychology and jury decision-making, particularly in relation to the special measures involved with child witness testimony and the influence of stereotypes. Her research interests are focused on randomised controlled trials examining the impact of legitimate policing, and interventions for young people at risk.



**TRACEY ARKLAY**  
Research Fellow, Policy Analysis and  
Evaluation Program  
*PhD (Griffith University)*

Tracey is a political scientist whose research interests include policy advice, policy capacity, intergovernmental relations, state politics, and disaster management. Her previous research includes state parliamentary history, electoral analysis, and political biography. She has taught Australian and state politics to undergraduates, was the managing editor of the Australian Journal of International Affairs (2007-2013) and is currently on the editorial board of the Australian Journal of Public Administration.

## ACADEMIC STAFF



**BERNARD BAFFOUR**  
Research Fellow, ReMASS program  
*PhD (University of Southampton)*

Bernard is a social statistician with specialist expertise in sampling strategy and design, analysis of survey data (particularly in the production of robust national-level estimates of survey statistics), and in quantifying relationships using statistical methods. He has experience teaching quantitative methods and statistical methodology to undergraduate and postgraduate students and coordinates courses in the MFSAS professional development series. Bernard's current research interests include the development of optimal weighting strategies for combining data from telephone surveys with dual sampling frames for landline and mobile phones.



**SARAH BENNETT**  
Research Fellow, Policing and Security  
research program  
*PhD (University of Cambridge)*

Sarah is a Research Fellow in Lorraine Mazerolle's Laureate Fellowship and the Policing and Security research program at ISSR. Sarah is an experimental criminologist with experience in running multi-site randomised controlled trials with police in Australia and the UK. Her research interests include legitimacy and policing, restorative justice, pathways to preventing offending, and the impact of crime on victims.



**YVETTE BETTINI**  
Research Fellow, Sustainability and  
Environment research program  
*PhD (Monash University)*

Through the course of her career, Yvette has developed an interest in the interface between Western society's sustainable use and management of natural resources. In her PhD research into urban water, she set out to explore how different social dimensions of natural resources management and governance influence sustainability transitions. Yvette also has experience in public administration, policy development, program management, and fostering community participation in policy and water/catchment management.



**ROCHELLE CÔTÉ**  
UQ Postdoctoral Research Fellow  
*PhD (Monash University)*

Rochelle's research in Australia is a continuation of projects in Canada and the US which focus on urban Indigenous people 'walking in two worlds'. Specifically, her work looks at the link between social networks, culture and an emerging urban Indigenous middle class across three countries. Rochelle has written and presented on many aspects of Indigenous entrepreneurship, networks and social capital, reciprocity, and social tolerance. She has also provided consulting expertise to agencies in Canada on matters related to the development of social networks and social capital.

## ACADEMIC STAFF



**SUE CREAGH**  
Research Fellow, ReMASS program  
*PhD (The University of Queensland)*

Sue has a background in teaching and education policy, specifically in the area of English as an Additional Language. Sue's PhD research focused on the relationship between national standardised school testing, the use of statistical categories for reporting test performance, and language proficiency of students who are speakers of languages other than English. Sue's research at ISSR is within an ARC Linkage project with The Smith Family, exploring how educational outcomes can be improved for disadvantaged young people.



**MADONNA DEVANEY**  
Research Fellow, Policing and Security  
research program  
*PhD (University of Essex)*

Madonna is a Research Fellow in the Policing and Security research program at ISSR. She has over ten years' research experience evaluating clinical interventions and service models for the treatment of alcohol and drug dependence. Much of this work was contracted by the Victorian and Australian governments, international organisations (including the United Nations Office on Drugs and Crime), and not-for-profit and charitable organisations such as St John of God and Rotary. Her research typically includes mixed-method approaches to data collection and consultation with a range of key stakeholders.



**JASON FERRIS**  
Senior Research Fellow, Policing and  
Security research program  
*PhD (The University of Queensland)*

Jason is a Senior Research Fellow at ISSR. He works in both the Policing and Security research program, with Professor Lorraine Mazerolle, and the ReMASS program, with Professor Michele Haynes. He also leads the Drug and Alcohol Policy Research theme. He was awarded his PhD from UQ in 2014 on alcohol epidemiology. He has a well-established publication record which focuses on alcohol and drug research, and sexual and adolescent health.



**KELLY FIELDING**  
Senior Research Fellow, Sustainability and  
Environment research program  
*PhD (The University Of Queensland) ARC Future Fellow*

Kelly is a Senior Research Fellow and ARC Future Fellow at ISSR. As a social and environmental psychologist, her research broadly focuses on the psycho-social dimensions of environmental sustainability. She takes a collaborative approach to her work and has led significant interdisciplinary projects focused on household environmental sustainability and social analyses of urban water management. In addition to her work with ISSR, Kelly is leading the Social Innovations and Behaviour Change project for the Cooperative Research Centre for Water Sensitive Cities

## ACADEMIC STAFF



**JOSHUA NEWMAN**  
Research Fellow, Policy Analysis and  
Evaluation research program  
*PhD (Simon Fraser University)*

Having trained as a mechanical engineer in Canada, Josh's research interests lean toward the area of policy development for infrastructure delivery, especially the interaction of the public and private sectors for the delivery of public services. More broadly, Josh has investigated learning and change in public policy, policy network analysis, policy capacity, and the politics of climate change.



**FRANCISCO (PACO) PERALES**  
Research Fellow, Life Course Centre  
*PhD (University of Essex)*

Paco has a background in sociology and social statistics. His research revolves around issues of gender, work and families, with a particular interest in the roles of gender, skills and occupation in creating and perpetuating gender-based inequality at home and at work. His work rests heavily on the analysis of complex survey data, especially longitudinal and panel datasets.



**MAREE PETERSEN**  
Postdoctoral Research Fellow, Social  
Wellbeing, Health & Housing research  
program  
*PhD (The University of Queensland)*

Maree's research interests are closely aligned with her background as a social work practitioner, in particular working with older people. Her doctoral research drew from practice dilemmas and explored the distinctive geographies of purpose-built residential complexes. Maree's interest in the living environments of older people continues in her current research projects concerned with older people and homelessness, rural service provision, housing and wellbeing, as well as a longstanding interest in retirement villages and residential care facilities.



**RHONDA PHILLIPS**  
Research Fellow, Social Wellbeing, Health &  
Housing research program  
*MPhil (The University of Queensland)*

Rhonda's research at ISSR is primarily into housing and homelessness. She is recognised nationally for her housing policy and research expertise. Rhonda has wide-ranging experience of and a strong interest in qualitative research and evaluation methods, including success in engaging vulnerable social housing tenants, Indigenous and homeless people in research studies. She has particular expertise in social policy analysis and evaluation, extensive experience interviewing senior policymakers and advocates, and in writing reports for government clients.



ACADEMIC  
STAFF



**SUZANNA RAMIREZ**  
Research Fellow, Policing and Security research program  
*PhD (University of Washington)*

Suzanna's PhD research focused on the relationships between neighbourhood collective efficacy, collective action and violent victimisation. Her research continues the themes set down in her PhD by looking at the role of collective efficacy and community cohesion among neighbourhoods and among individuals as it relates to perceptions of risk and disaster preparedness in Australia. She is also involved in examining the relationship between neighbourhood structure, social control and the reporting and monitoring of child abuse and neglect.



**ELISE SARGEANT**  
UQ Postdoctoral Research Fellow, Policing and Security research program  
*PhD (The University of Queensland)*

Elise is a Research Fellow in the Policing and Security research program at ISSR. Her research focuses on police legitimacy, citizen's perceptions of police, and understanding the community context of policing and collective efficacy theory. She has experience in both survey/interview design and research using both quantitative and qualitative methods and has published in the areas of police legitimacy, collective efficacy, and police effectiveness.



**ANDREW SMITH**  
Research Fellow, ReMASS program  
*PhD (The University of Queensland)*

Andrew developed the Leximancer Text Analysis System at UQ, which was then commercialised by UniQuest. Andrew's early research training was in physics, for which he received his PhD in 1993. After working for seven years in the IT industry, he enrolled in a Master's degree in information science to develop a robust computational system for quantifying and visualising the conceptual information in large text collections (Leximancer). Building upon the success of Leximancer, Dr Smith has been at the forefront of designing new platforms for analysing high volume unstructured data, such as conversations, media reports and Twitter® feeds. This recent work has been supported by the US Air Force and the EU, and has produced the Discursis discourse analysis system and the Situation Tracker system, which are being commercialised by Hypermancer SIA, a European start-up company.



**TSUI-O TAI**  
UQ Postdoctoral Research Fellow  
*PhD (University of California)*

Tsui-O completed her PhD at the University of California, Irvine. Her current research interests focus on inequality, gender, ageing and life course, family, research methods and statistics, social policy and comparative sociology.

ACADEMIC  
STAFF



**WOJTEK TOMASZEWSKI**  
Research Fellow, Employment and Education research program  
*PhD (European University Institute)*

Wojtek is a Research Fellow with expertise in quantitative research methods, statistical analysis of complex data, and in research on poverty, social exclusion, housing, homelessness, and ageing. His particular interests are in social issues relating to education and employment. An international scholar, Wojtek joined ISSR from the National Centre for Social Research in London bringing invaluable international insights and statistical rigour to ISSR's research.



**SERGI VIDAL**  
UQ Postdoctoral Research Fellow  
*PhD (Universitat Pompeu Fabra)*

Sergi is a social demographer and holds a PhD in political and social sciences from Universitat Pompeu Fabra in Barcelona. He has extensive training in quantitative methods from the Max Planck Institute for Demographic Research and the University of Bremen in Germany, and the University of Essex in the UK. During that time he participated in several nationally and internationally funded research projects. He also conducted quantitative empirical research on a number of relevant areas, including internal migration and residential mobility, transitions to adulthood, housing wealth, union membership, occupational sex segregation, and intra-household gender inequality.



**MARIA ZADOROZNYJ**  
Associate Professor, Employment and Education research program  
*PhD (University of Wisconsin)*

Maria is an Associate Professor in Sociology at UQ, where she has a joint appointment in ISSR and the School of Social Science. She has longstanding interests in the sociology of health, gender and work. In recent years her research has focused on analysing health and social policies which shape the experiences of care provision to families following the birth of a child. Maria is a chief investigator on the evaluations of the Paid Parental Leave Scheme, Dad and Partner Pay, and the Queensland-based evaluation of the Universal Postnatal Contact Services (with collaborators from the Queensland Centre for Mothers and Babies).

RESEARCH  
SUPPORT  
STAFF

Ms Laura Bedford	Ms Hannah Larsen
Mr Joseph Byrne	Ms Kate Leslie
Mr Daniel Caetano	Miss Ornella Moutou
Dr Denise Clague	Dr Jenny Povey
Ms Laetitia Coles	Miss Emina Prguda
Dr Angela Dean	Ms Judith Rose
Ms Laura Dunstan	Ms Adele Somerville
Ms Elizabeth Eggins	Ms Melanie Spallek
Ms Michele Ferguson	Ms Jenna Thompson
Ms Amelia Gray	Ms Tania Walker
Ms Nicole Kapelle	Dr Ning Xiang
Ms Elizabeth Kennedy	Ms Susan York

PROFESSIONAL  
SUPPORT  
STAFF

Ms Erica Davis, Senior Legal Counsel, Research
Ms Emma Earl, Research Partnerships Manager
Ms Carla Gerbo, Life Course Centre Manager
Ms Cara Herington, Office Manager
Ms Cassandra Hughes, Executive Assistant/Events Manager
Mrs Louise Keith, Finance Manager
Miss Morgan Lee, Office Administrator
Miss Sally Lowe, Human Resources Officer
Ms Carla McCarthy, Events and Administrative Coordinator (LCC)
Ms Linda Morris, Senior Finance Officer
Ms Honor Morton, Marketing and Communications Officer
Mr Jawad Shamsi, Project Officer (Commercial Development)
Ms Jadwiga Szablewska, Finance Officer
Ms Cathie Wilson, Proposal Writer

AFFILIATE  
APPOINTMENTS

Dr Adrian Cherney, Affiliate
Dr Lacey Schaefer, Affiliate
Dr Rebecca Wickes, Affiliate
Emeritus Professor Paul R Boreham
Dr Sin Y Cheung, Honorary Senior Lecturer
Emeritus Professor David de Vaus
Professor Fiona Devine, Honorary Professor
Professor Andrew E Jones, Emeritus Professor
Dr Gregory R Picker, Honorary Research Consultant
Professor Fiona Steele, Honorary Professor
Dr Tsui-O Tai, Honorary Research Fellow
Dr Vikki Uhlmann, Honorary Research Fellow
Dr Gentry A White, Honorary Senior Fellow
Dr Mara A Yerkes, Honorary Senior Research Fellow

ADJUNCT &  
HONORARY  
APPOINTMENTS

Ms Linda Apelt, Adjunct Professor
Dr Garth Britton, Adjunct Senior Research Fellow
Dr Linda K Colley, Adjunct Research Fellow
Dr Stephen F Darroch, Adjunct Research Fellow
Dr Michael C Limerick, Adjunct Associate Professor
Dr Roderick P McCrea, Adjunct Research Fellow
Adjunct Professor Michael McFadden, Adjunct Professor
Mr Maurie McNarn, AO, Adjunct Professor
Mr Gregory N Oliver, Adjunct Senior Research Fellow
Mr Darren Pennay, Adjunct Professor
Mr Geoffrey Richardson, Adjunct Associate Professor
Ms Jenny Bellamy, Honorary Senior Research Fellow





# PUBLICATIONS

## Books

Lingard, B. (2014) Politics, policies and pedagogies in education: the selected works of Bob Lingard. Abingdon, Oxon, U.K.: Routledge.

Mazerolle, L., Sargeant, E., Cherney, A., Bennett, S., Murphy, K., Antrobus, E. et al. (2014) Procedural justice and legitimacy in policing. Cham, Switzerland: Springer.

Poynter, R., Williams, N. & York, S. (2014) The Handbook of Mobile Market Research: Tools and Techniques for Market Researchers. Chichester, W Sussex, UK: John Wiley and Sons.

Schaefer, L., Eck, J. & Cullen, F. (2014) Monitoring Offenders on Conditional Release. Washington, DC United States: Center for Problem-Oriented Policing Inc., U.S. Department of Justice.

## Book chapters

Baxter, J., Van Egmond, M.Buchler, S. & Western, M. (2014) Gender role attitudes in Australia, 1986-2005. In Alex C. Michalos (Eds.), Encyclopedia of Quality of Life and Well-Being Research (pp. 2458-2461). Dordrecht, Netherlands: Springer.

Bennett, S., Davis, J. & Mazerolle, L. (2014) Police-led interventions to enhance police legitimacy. In Gerben Bruinsma, David Weisburd (Eds.), Encyclopedia of Criminology and Criminal Justice (pp. 3753-3765). New York, USA: Springer.

Benoit, C., Stengel, C.Phillips, R. Zadoroznyj, M. & Berry, S. (2014) Gaps in post-birth care in neo-liberal times: Evidence from Canada. In Meredith Nash (Eds.), Reframing Reproduction: Conceiving gendered experiences in late modernity (pp. 84-97). Basingstoke: Palgrave Macmillan.

Buchler, S., Chesters, J.Higginson, A. & Haynes, M. (2014) Adult learning in Australia: predictors and outcomes. In Hans-Peter Blossfeld, Elena Kilpi-Jakonen, Daniela Vono de Vilhena, Sandra Buchholz (Eds.), Adult learning in modern societies: an international comparison from a life-course perspective (pp. 98-118). Cheltenham, United Kingdom: Edward Elgar.

Fernandes, A., Ramirez, S. & Crutchfield, R. (2014) Race and ethnicity in social disorganization theory. In Gerben Bruinsma, David Weisburd (Eds.), Encyclopedia of Criminology and Criminal Justice (pp. 4237-4245). New York, NY, USA: Springer.

Head, B. (2014) Research and its policy relevance. In Robert Stimson (Eds.), Handbook of research methods and

applications in spatially integrated social science (pp. 603-616). Cheltenham, United Kingdom: Edward Elgar.

Head, B. (2014) The collaboration solution? Factors for collaborative success. In Janine O'Flynn, Deborah Blackman, John Halligan (Eds.), Crossing Boundaries in Public Management and Policy: The international experience (pp. 142-157). Abingdon, Oxon, U.K.: Routledge.

Jones, A. & Petersen, M. (2014) Older people. In Chris Chamberlain, Guy Johnson, Catherine Robinson (Eds.), Homelessness in Australia, an introduction (pp. 135-154). Sydney, NSW, Australia: NewSouth Publishing.

Lum, C. & Mazerolle, L. (2014) History of randomized controlled experiments in criminal justice in Gerben Bruinsma and David Weisburd (Eds.) Encyclopedia of Criminology and Criminal Justice. New York, NY, USA: Springer 4.8118

Memmott, P. & Nash, D. (2014) Indigenous homelessness. In Chris Chamberlain, Guy Johnson, Catherine Robinson (Eds.), Homelessness in Australia, an introduction (pp. 155-178). Sydney, NSW, Australia: New South Publishing.

Meyer, S. & Mazerolle, L. (2014) Family engagement strategies to reduce crime in Gerben Bruinsma and David Weisburd (Eds.) Encyclopedia of Criminology and Criminal Justice. New York, NY, USA: Springer.

Nitschke, F., Mazerolle, L. & Bennett, S. (2014) Third party policing and school truancy. In Gerben Bruinsma, David Weisburd (Eds.), Encyclopedia of Criminology and Criminal Justice (pp. 5211-5221). New York, USA: Springer.

Parsell, C. (2014) Chronic homelessness: a political and moral priority. In Chris Chamberlain, Guy Johnson, Catherine Robinson (Eds.), Homelessness in Australia, an introduction (pp. 233-252). Sydney, NSW, Australia: NewSouth Publishing.

Perales, F. (2014) Why do men and women still work in different occupations? A test of human capital and socialization theories. In Albert Tavidze (Eds.), Progress in economics research (pp. 171-207). Hauppauge, NY, United States: Nova Science Publishers.

Shyy, T., Mazerolle, L.Riseley, K. & Stimson, R. (2014) Web-based GIS to support visualization and analysis of community variations in crime. In Robert Stimson (Eds.), Handbook of research methods and applications in spatially integrated social science (pp. 535-559). Cheltenham, United Kingdom: Edward Elgar.



Tai, Tsui-O (2014) Relationships. In Janeen Baxter & Jeff Manza (Eds.), Oxford Bibliographies: Sociology (pp. 1-1) Oxford, United Kingdom: Oxford University Press. doi:10.1093/OBO/9780199756384-0100 4.8121 0

Western, M. (2014) Using quantitative data in the social sciences. In Robert J. Stimson (Eds.), Handbook of Research Methods and Applications in Spatially Integrated Social Science (pp. 150-176). Cheltenham, Glos, UK: Edward Elgar Publishing.

Western M., & Baxter J. (2014) Class and inequality in Australia. In J. Germov and M. Poole (Eds.), Public Sociology: An Introduction to Australian Society (3rd edition). Allen and Unwin.

Conference papers

Antrobus, E., Bennett, S., Mazerolle, L., & Prguda, E. (2014). Perceptions of police legitimacy in the context of truancy: Results from a randomized field trial. Presented at the Annual Meeting of the American Society of Criminology, San Francisco, USA, 19-22 November, 2014.

Bennett, S., Antrobus, E., Eggins, E., & Mazerolle, L. (2014). Offending, victimization and perceptions of police legitimacy. Presented at the Annual Meeting of the American Society of Criminology, San Francisco, USA, 19-22 November, 2014.

Bettini, Y. (2014). Understanding policy design and implementation disconnect through an institutional lens: Comparing policy and practice change in Australian urban water management. International Research Society for Public Management Conference, 9 – 11th April, 2014. Ottawa, Canada.

Bettini, Y. (2014). Supporting policy learning: mapping and analyzing the context of policy making. Public Policy Network Conference, 30th – 31st January, 2014. Canberra, Australia.

Buchler, S., Perales, F. & Baxter, J. (2014) Becoming a dad: first births and attitudes towards fathering. In: ISA World Congress of Sociology, Yokohama, Japan. 16 July 2014.

Bettini, Y. & Arklay, T. (2014). Disaster and drought: learning from governance responses to complex policy issues. International Research Society for Public Management Conference, 9 – 11th April, 2014. Ottawa, Canada.

Bettini, Y. &Frantzenskaki, N. (2014). Linking multi-scale adaptive capacity

to sustainability transitions of urban water systems. International Society for Ecological Economics Conference, 13th -15th August, 2014. Reykjavik, Iceland.

Bettini, Y. & Frantzenskaki, N. (2014). Linking practice to process: examining adaptive institutional capacity using the multi-level transition governance framework. International Sustainability Transitions Conference, 27th – 29th August, 2014. Utrecht, the Netherlands.

Bettini, Y. & Head, B.W. (2014). Opportunity structures: understanding capacity for policy innovation. Australian Political Studies Association Conference, 29th September – 1st October, 2014. Sydney, Australia.

Ferris, J., Winstock, A., Devaney, M. & Waldron, J. (2014) Nitrous oxide (N<sub>2</sub>O) use and myeloneuropathy: Understanding the recreational use of N<sub>2</sub>O and the dose-response relationship with myeloneuropathy. In: Australasian Professional Society on Alcohol and other Drugs Conference 2014: Abstracts. APSAD 2014: Australasian Professional Society on Alcohol and other Drugs Conference, Adelaide, SA, Australia, (26-26). 9-12 November, 2014. doi:10.1111/dar.12222

Hewitt, B., Whitehouse, G., Baird, M. & Yerkes, M. (2014) "Australian fathers' use of leave for parenting: changing patterns and policy implications", presented at Work and Family Researchers Network conference, New York City, 19-21 June 2014, and the XVIII ISA World Congress of Sociology, Yokohama, Japan, 13-19 July 2014.

Mackinlay, E., Barney, K. & Creagh, S. (2014) Becoming, belonging and being in the profession: Evaluating a mentoring program for Aboriginal and Torres Strait Islander initial teacher educators. In ATEA 2014: Australian Teacher Education Association Conference 2014. ATEA 2014: Australian Teacher Education Association Conference 2014, Sydney, NSW, Australia, (186-199). 6-9 July, 2014.

Marquart, L., Haynes, M. & Baker, P. (2014) Impact of misspecified random effect distributions on models for panel survey data. In Thomas Kneib, Fabian Sobotka, Jan Fahrenholz, Henriette Irmer (Eds.), IWSM 2014: 29th International Workshop on Statistical Modelling. IWSM 2014: 29th International Workshop on Statistical Modelling, Göttingen, Germany, (207-212). 14-18 July, 2014.

Memmott, P. (2014) In search of the Wakaya ‘clever man’ and research on social problems in Barkly Region, N.T. and Qld. In: Breaking Barriers in

Indigenous Research and Thinking: 50 years on. Program. AIATSIS Indigenous Studies Conference 2014, Canberra, ACT, Australia, (51-51). 26-28 March, 2014.

Memmott, P. & Keys, C. (2014) Translating the design of behaviour settings for Aboriginal well-being. In Christoph Schnoor (Ed.), Society of Architectural Historians, Australia and New Zealand (SAHANZ) Annual Conference. SAHANZ Annual Conference, Auckland, New Zealand, (517-529). 2-5 July 2014.

Newman, J. (2014) Australian Policy Workers and the Use of Evidence in Policy-Making. Paper prepared for the International Research Society for Public Management Conference, Carleton University, Ottawa, 9-11 April 2014.

Newman, J. (2014) Clearing the air: the role of uncertainty in the emerging regulation of e-cigarettes. Paper prepared for the International Conference on Uncertainty and Policy Design, Chengdu, China, 27-28 November 2014.

Newman, J. (2014) Do policy makers use academic research? The 'two communities' theory of research utilization revisited. Paper prepared for the Australian Political Studies Association Annual Conference, Sydney, Australia, 28 September - 1 October 2014.

Newman, J. (2014) Wicked problems as first world problems: conceptualising complex policy problems in developed and developing country contexts. Paper prepared for the New Zealand Political Studies Association Annual Conference, Auckland, New Zealand, 1-3 December 2014.

Newman, J. & Head, B. (2014) Categories of failure in climate change mitigation policy in Australia. Paper prepared for the International Workshop on Policy Design and Governance Failures, Lee Kuan Yew School of Public Policy, National University of Singapore, 20-21 February 2014.

Newman, J. & Head, B. W. (2014) Perceptions of wickedness: the spatial dimensions of wicked policy problems. Paper prepared for the International Political Science Association World Congress, Montreal, Quebec, 19-24 July 2014.

Newman, J. & Bird, M. G. (2014) British Columbia's Fast Ferries and Sydney's Airport Link: Partisan Barriers to Recovery from Policy Failure. Paper prepared for the International Workshop on Policy Design and Governance Failures, Lee Kuan Yew School of Public Policy, National University of Singapore, 20-21 February 2014.

Petersen, M. (2014) First time homelessness amongst older people-family matters, National Homelessness Conference, Gold Coast, Australia, 10-12 September 2014.

Perales, F. & Tomaszewski, W. (2014) Who settles for less at work? Subjective dispositions, job characteristics, and job satisfaction. In: ISA World Congress of Sociology, Yokohama, Japan. 14 July 2014.

Vidal, S. (2014) Individuals' Openness to Migrate and Job Mobility. In: Bi-annual Australian Statistical Conference, University of Sydney, Australia (July)

Vidal, S., Perales, F., Lersch, P. & Branden, M. (2014) Long-distance relocations of families in Australia, Britain, Germany and Sweden: Intersections of gender and institutional context. In Australian Population Association Conference. Australian Population Association Conference, Hobart, Australia. 3-5 December 2014.

Vidal, S., Perales, F., Lersch, P. & Branden, M. (2014) Family migration in a cross-national comparative perspective: Project aims and first results for Australia, Britain, Germany and Sweden. In: European Population Conference, Budapest, Hungary. 27 June 2014.

Vidal, S., Perales, F., Lersch, P. & Branden, M. (2014) Family migration in a cross-national comparative perspective: Project aims and first results for Australia, Britain, Germany and Sweden. In: 4th International Pairfam Conference, Cologne, Germany (September).

Whitehouse, G., Hewitt, B., & Martin, B. (2014) Employment transitions following the birth of a child: analysing Australian mothers' career trajectories, presented by Gillian Whitehouse at Work and Family Researchers Network conference, New York City, 19-21 June 2014, and the XVIII ISA World Congress of Sociology, Yokohama, Japan, 13-19 July 2014; and presented by Belinda Hewitt at TASA conference, Adelaide, 24-27 November, 2014.

Journal articles

Amiralian, N., Annamalai, P., Fitzgerald, C., Memmott, P. & Martin, D. (2014) Optimisation of resin extraction from an Australian arid grass 'Triodia pungens' and its preliminary evaluation as an anti-termite timber coating. Industrial Crops and Products, 59: 241-247.

Angel, C., Sherman, L., Strang, H., Ariel, B., Bennett, S., Inkpen, N. et al. (2014) Short-term effects of restorative justice conferences on post-traumatic stress symptoms among robbery and burglary victims: a randomized controlled trial. Journal of Experimental Criminology, Online First: 1-17.

Antrobus, E., Elffers, H. White, G. & Mazerolle, L. (2014) Nonresponse bias in randomized controlled experiments in criminology: putting the Queensland Community Engagement Trial (QCET) under a microscope. Evaluation Review, 37(3-4): 197-212.

Arklay, T. (2014) Leadership lessons: minority governments, independents and relationships. Australian Journal of Politics and History, 60(1): 58-72.

Barratt, M., Ferris, J., & Lentonm S. (2015) Hidden populations, online purposive sampling, and external validity: taking off the blind-fold. Field Methods, 27(1):3-21.

Barratt, M., Ferris, J. & Winstock, A. (2014) Use of Silk Road, the online drug marketplace, in the United Kingdom, Australia and the United States. Addiction, 109(5): 774-783.

Baxter, J., Buchler, S., Perales, F. & Western, M. (2014) A life-changing event: first births and men's and women's attitudes to mothering and gender divisions of labor. Social Forces, 93(3): 989-1014.

Bedford, L. & Mazerolle, L. (2014) Beyond the evidence: organizational learning from RCTs in policing. Policing, 8(4): 402-416.

Berends, L., Ferris, J. & Laslett, A. (2014) On the nature of harms reported by those identifying a problematic drinker in the family, an exploratory study. Journal of Family Violence, 29(2): 197-204.

Brady, M. & Perales, F. (2014) Hours of paid work among single and partnered mothers in Australia: the role of childcare packages. Journal of Family Issues, OnlineFirst: 1-24.

Callinan, S. & Ferris, J. (2014) Trends in alcohol consumption during pregnancy in Australia, 2001–2010. The International Journal of Alcohol and Drug Research, 3(1): 17-24.

Chan, R., Webster, J., Chung, B., Marquart, L., Ahmed, M. & Garantziotis, S. (2014). Prevention and treatment of acute radiation induced skin reactions: a systematic review and meta-analysis of randomized controlled trials. BMC Cancer, 14(53):1-19.

Cherney, A., Head, B.Povey, J. Ferguson, M. & Boreham, P. (2014) Use of academic social research by public officials: exploring preferences and constraints that impact on research use. Evidence and Policy. doi: 10.1332/174426514X1413892 6450067

Colley, L. (2014) Aging public services and the position of older women: an Australian case study. Journal of Women and Aging, 26(2): 160-181.

Colley, L. & Head, B. (2014) Privatisation and new public management: Asset sales and Commissions of Audit in Queensland, 1990–2013. Australian Journal of Political Science, 49(3): 391-407.

Craig, L. & Baxter, J. (2014) Domestic outsourcing, housework shares and subjective time pressure: gender differences in the correlates of hiring help. Social Indicators Research. doi: 10.1007/s11205-014-0833-1

Creagh, S. (2014) A Foucauldian and quantitative analysis of NAPLaN, the category 'Language Background Other Than English', and English as a second language level. TESOL in Context, 24 2: 7-9.

Creagh, S. (2014) NAPLaN test data, ESL Bandscales and the validity of EAL/D teacher judgement of student performance. TESOL in Context, 24(2): 30-50.

Creagh, S. (2014) National standardised testing and the diluting of English as a second language (ESL) in Australia. English Teaching: Practice and Critique, 13(1): 24-38.

Davis, J., Mengersen, K. Bennett, S. & Mazerolle, L. (2014) Viewing systematic reviews and meta-analysis in social research through different lenses. SpringerPlus, 3(1).

De Barro, P., Goldson, S., Bartsch, D., Hirsch, M., Jeggo, M., Lowenthal, J. et al. (2014) Science into policy; improving uptake and adoption of research: outcomes and conclusions. Journal fur Verbraucherschutz und Lebensmittelsicherheit, 9 (1, Supp.): 1-6.

Devaney, M., Ferris, J. & Mazerolle, L. (2014) Online reporting of pseudoephedrine pharmacy sales: does Australia require a mandatory system? International Journal of Pharmacy Practice. doi: 10.1111/ijpp.12153

Ferguson, M. (2014) The research impact agenda: Defining, demonstrating and defending the value of the social sciences. Australian Review of Public Affairs Digest.



Fielding, K. & Roiko, A. (2014) Providing information promotes greater public support for potable recycled water. *Water Research*, 61: 86-96.

Fielding, K., Hornsey, M. & Swim, J. (2014) Developing a social psychology of climate change. *European Journal of Social Psychology*, 44(5): 413-420.

Gamage, H., Memmott, P.Firn, J. & Schmidt, S. (2014) Harvesting as an alternative to burning for managing spinifex grasslands in Australia. *Advances in Ecological Research*, 2014: 430431.1-430431.12.

Head, B. (2014) Evidence, uncertainty and wicked problems in climate change decision-making in Australia. *Environment and Planning C: Government and Policy*, 32(4): 663-679.

Head, B. (2014) Managing urban water crises: adaptive policy responses to drought and flood in Southeast Queensland, Australia. *Ecology and Society*, 19(2): 33.1-33.14.

Head, B. (2014) Public administration and the promise of evidence-based policy: experience in and beyond Australia. *Asia Pacific Journal of Public Administration*, 36(1): 48-59.

Head, B., Ferguson, M., Cherney, A. & Boreham, P. (2014) Are policy-makers interested in social research? Exploring the sources and uses of valued information among public servants in Australia. *Policy and Society*, 33(2): 89-101.

Hewitt, B. & Walter, M. (2014) Preschool participation among Indigenous children in Australia. *Family Matters*, 95: 41-50.

Higginson, A., Benier, K., Shenderovich, Y., Bedford, L., Mazerolle, L. & Murray, J. (2014) Predictors of youth gang membership in low- and middle-income countries: a systematic review. *The Campbell Collaboration Library of Systematic Reviews*: 1-60.

Higginson, A., Benier, K., Shenderovich, Y., Bedford, L., Mazerolle, L. & Murray, J. (2014) Preventive interventions to reduce youth involvement in gangs and gang crime in low and middle-income countries: a systematic review. *The Campbell Collaboration Library of Systematic Reviews*: 1-62.

Higginson, A. & Mazerolle, L. (2014) Legitimacy policing of places: the impact on crime and disorder. *Journal of Experimental Criminology*, 10(4): 429-457.

Huinink, J., Vidal, S. & Kley, S. (2014) Individuals' openness to migrate and job mobility. *Social Science Research*, 44: 1-14.

Jackson, A., Pennay, D., Dowling, N. Coles-Janess, B. & Christensen, D. (2014) Improving gambling survey research using dual-frame sampling of landline and mobile phone numbers. *Journal of Gambling Studies*, 30(2): 291-307.

Kenway, S., Binks, A., Bors, J., Pamminger, F., Lant, P., Head, B. et al. (2014) Understanding and managing water-related energy use in Australian households: preliminary results of a research project being carried out by The University of Queensland and the Smart Water Fund. *Water*, 41(2): 184-188.

Kruske, S., Schultz, T., Eales, S. & Kildea, S. (2015) A retrospective, descriptive study of maternal and neonatal transfers, and clinical outcomes of a Primary Maternity Unit in rural Queensland, 2009 - 2011. *Women and Birth*, 28(1): 30-39.

Langbecker, D., Diaz, A., Chan, R., Marquart, L., Hevey, D., Hamilton, J. (2014). Educational programmes for primary prevention of skin cancer. *Cochrane Database of Systematic Reviews*, 2014(4): CD011061.-SD011061.19.

Laslett, A., Wilkinson, C., Room, R., Livingston, M., Ferris, J. and Mugavin, J. (2014) Alcohol's harm to others: an overview of Australian work and results so far. *Australasian Epidemiologist*, 21 2: 10-11.

Lersch, P. & Vidal, S. (2014) Falling out of love and down the housing ladder: a longitudinal analysis of marital separation and home ownership. *European Sociological Review*, 30(4): 512-524.

Luo, L., Wall, A., Yeo, J., Condon, N., Norwood, S., Schoenwaelder, S. et al. (2014) Rab8a interacts directly with PI3Ky to modulate TLR4-driven PI3K and mTOR signalling. *Nature Communications*, 5:4407.1-4407.13.

Manning, M., Mazerolle, L., Mazerolle, P. & Collingwood, P. (2014) Place managers in entertainment districts: the role of third party policing in shaping place manager actions. *Policing and Society*. doi:10.1080/10439463.2014.989848

Martinez Jr., A., Lucio, E. & Villaruel, M. (2014) Examining a weight reallocation method for small area estimation of poverty. *Electronic Journal of Applied Statistical Analysis*, 7(2): 417-431.

Martinez, A., Western, M., Haynes, M. & Tomaszewski, W. (2014) Is there income mobility in the Philippines?. *Asian-Pacific Economic Literature*, 28(1): 96-115.

Martinez Jr, A., Western, M., Haynes, M. Tomaszewski, W. & Macarayan, E. (2014) Multiple job holding and income mobility in Indonesia. *Research in Social Stratification and Mobility*, 37: 91-104.

Mazerolle, L. (2014) The power of policing partnerships: sustaining the gains. *Journal of Experimental Criminology*, 10(3): 341-365.

Mazerolle, L., Bates, L., Bennett, S., White, G., Ferris, J. & Antrobus, E. (2014) Optimising the length of random breath tests: results from the Queensland Community Engagement Trial. *Australia and New Zealand Journal of Criminology*: 48(2):256-276.

Mazerolle, L., Higginson, A. & Thompson, J. (2014) Crop targeting's impact as a drug control strategy. *The Campbell Collaboration Library of Systematic Reviews*: 1-49.

Mazur, A., Pisarski, A.Chang, A. & Ashkanasy, N. (2014) Rating defence major project success: the role of personal attributes and stakeholder relationships. *International Journal of Project Management*, 32(6): 944-957.

McAllister, R., McCrea, R. & Lubell, M. (2014) Policy networks, stakeholder interactions and climate adaptation in the region of South East Queensland, Australia. *Regional Environmental Change*, 14(2): 527-539.

McDonald, R., Fielding, K. & Louis, W. (2014) Conflicting norms highlight the need for action. *Environment and Behavior*, 46(2): 139-162.

McDonald, R., Fielding, K. & Louis, W. (2014) Conflicting social norms and community conservation compliance. *Journal for Nature Conservation*, 22(3): 212-216.

McKimmie, B., Antrobus, E. & Baguley, C. (2014) Objective and subjective comprehension of jury instructions in criminal trials. *New Criminal Law Review*, 17(2): 163-183.

Memmott, P., Greenop, K. & Birdsall-Jones, C. (2014) How is crowding in Indigenous households managed? *AHURI Research and Policy Bulletin*, 1180: 1-4. 2.9934

Meyer, S. (2014) Victims' experiences of short-and long-term safety and wellbeing: findings from an examination of an integrated response to domestic violence. *Trends and Issues in Crime and Criminal Justice* (478): 1-7.

Moran, M. & Corpus, G. (2014) Adapting development practice to indigenous contexts. *Development Bulletin*, 76: 79-83.

Moran, M. & Porter, D. (2014) Reinventing the governance of public finances in remote Indigenous Australia. *Australian Journal of Public Administration*, 73(1): 115-127.

Murphy, K., Mazerolle, L., & Bennett, S. (2014) Promoting trust in police: findings from a randomized experimental field trial of procedural justice policing. *Policing and Society: An International Journal of Research and Policy* 24(4): 405-424.

Natalier, K. & Hewitt, B. (2014) Separated parents reproducing and undoing gender through defining legitimate uses of child support. *Gender and Society*, 28(6): 904-925.

Newman, J. (2014) Measuring Policy Success: Case Studies from Canada and Australia. *Australian Journal of Public Administration*, 73(2): 192-205.

Newman, J. (2014) Revisiting the "two communities" metaphor of research utilisation. *International Journal of Public Sector Management*, 27(7): 614-627.

Newman, J. & Howlett, M. (2014) Regulation and time: temporal patterns in regulatory development. *International Review of Administrative Sciences*, 80(3): 493-511.

Newman, J. & Perl, A. (2014) Partners in clime: Public-private partnerships and British Columbia's capacity to pursue climate policy objectives. *Canadian Public Administration*, 57(2): 217-233.

O'Brien, K., Ferris, J., Greenlees, I., Jowett, S., Rhind, D., Cook, P. et al. (2014) Alcohol industry sponsorship and hazardous drinking in UK university students who play sport. *Addiction*, 109(10): 1647-1654.

Parsell, C. (2014) Stories from the street: a theology of homelessness. *Housing Studies*, 29 3: 461-462. doi:10.1080/02673037.2013.830852

Parsell, C. & Jones, A. (2014) Bold reform or policy overreach? Australia's attack on homelessness. *International Journal of Housing Policy*, 14(4): 427-443.

Parsell, C. & Moutou, O. (2014) An evaluation of the nature and effectiveness of models of supportive housing. *AHURI Positioning Paper*, 158: i-46.

Parsell, C., Tomaszewski, W. & Phillips, R. (2014) Exiting unsheltered homelessness and sustaining housing: a human agency perspective. *Social Service Review*, 88(2): 295-321.

Perales, F. (2014) How wrong were we? Dependent interviewing, self-reports and measurement error in occupational mobility in panel surveys. *Longitudinal and Life Course Studies*, 5(3): 299-316.

Perales, F., Baxter, J., & Tai, T. (2015) Gender, justice and work: a distributive approach to perceptions of housework fairness. *Social Science Research*, 51: 51-63.

Perales, F., Del Pozo-Cruz, J. & Del Pozo-Cruz, B. (2014) Impact of physical activity on psychological distress: a prospective analysis of an Australian national sample. *American Journal of Public Health*, 104(12): e91-e97.

Perales, F., del Pozo-Cruz, J., del Pozo-Cruz, J. & del Pozo-Cruz, B. (2014) On the associations between physical activity and quality of life: findings from an Australian nationally representative panel survey. *Quality of Life Research*, 23(7): 1921-1933.

Petersen, M. & Parsell, C. (2014) Homeless for the first time in later life: an Australian study. *Housing Studies*. doi:10.1080/02673037.2014.963522

Petersen, M., Wilson, J.Wright, O. Ward, E. & Capra, S. (2014) The Space of Family Care-Giving in Australian Aged Care Facilities: Implications for Social Work. *British Journal of Social Work*. doi:10.1093/bjsw/bcu108

Petriwskyj, A., Warburton, J., Everingham, J. & Cuthill, M. (2014) Seniors' motivations for participation in local governance: evidence from an Australian study. *Local Government Studies*, 40(2): 240-263.

Prguda, E. & Neumann, D. (2014) Inter-human and animal-directed empathy: a test for evolutionary biases in empathetic responding. *Behavioural Processes*, 108: 80-86.

Rosendahl, D., Ulm, S.Tomkins, H. Wallis, L. & Memmott, P. (2014) Late Holocene changes in shellfishing behaviors from the Gulf of Carpentaria, Northern Australia. *Journal of Island and Coastal Archaeology*, 9(2): 253-267. Ross, V., Fielding, K. & Louis, W. (2014) Public acceptance of recycled water: The impact of trust. *Water Journal*, 41(1): 89-92.

Ross, V., Fielding, K. & Louis, W. (2014) Social trust, risk perceptions and public acceptance of recycled water: testing a social-psychological model. *Journal of Environmental Management*, 137: 61-68.

Sahu, S., Baffour, B., Harper, P. Minty, J. & Sarran, C. (2014) A hierarchical Bayesian model for improving short-term forecasting of hospital demand by including meteorological information. *Journal of the Royal Statistical Society. Series A: Statistics in Society*, 177(1): 39-61.

Sargeant, E., Antrobus, E., Murphy, K. Bennett, S. & Mazerolle, L. (2014) Social identity and procedural justice in police encounters with the public: results from a randomised controlled trial. *Policing and Society*. doi:10.1080/10439463.2014.989159

Schultz, T. & Fielding, K. (2014) The common in-group identity model enhances communication about recycled water. *Journal of Environmental Psychology*, 40: 296-305.

Shoushtarian, M., Barnett, M., McMahon, F. & Ferris, J. (2014) Impact of introducing practical obstetric multi-professional training (PROMPT) into maternity units in Victoria, Australia. *BJOG: An International Journal of Obstetrics and Gynaecology*, 121(13): 1710-1718.

Spallek, M., Haynes, M. & Jones, A. (2014) Holistic housing pathways for Australian families through the childbearing years. *Longitudinal and Life Course Studies*, 5(2): 205-226.

Sydes, M., Wickes, R. & Higginson, A. (2014) The spatial concentration of bias: an examination of the community factors that influence residents' perceptions of bias crime. *Australian and New Zealand Journal of Criminology*, 47(3): 1-20.

Tai, T., Baxter, J. & Hewitt, B. (2014) Do co-residence and intentions make a difference? Relationship satisfaction in married, cohabiting, and living apart together couples in four countries. *Demographic Research*, 31(1): 71-104.

Tomaszewski, W. & Cebulla, A. (2014) Jumping off the track: comparing the experiences of first jobs of young people living in disadvantaged and non-disadvantaged neighbourhoods in Britain. *Journal of Youth Studies*, 17(8): 1029-1045.

Turrell, G., Hewitt, B.Haynes, M. Nathan, A. & Giles-Corti, B. (2014) Change in walking for transport: a longitudinal study of the influence of neighbourhood disadvantage and individual-level socioeconomic position in mid-aged adults. *International Journal of Behavioral Nutrition and Physical Activity*, 11(1): 151.1-151.20.

Uhlmann, V., Rifkin, W.Everingham, J. Head, B. & May, K. (2014) Prioritising indicators of cumulative socio-economic impacts to characterise rapid development of onshore gas resources. *The Extractive Industries and Society*, 1(2): 189-199.

Unsworth, K. & Fielding, K. (2014) It's political: how the salience of one's political identity changes climate change beliefs and policy support. *Global Environmental Change*, 27: 131-137.

van der Lippe, T., Voorpostel, M. & Hewitt, B. (2014) Disagreements among cohabiting and married couples in 22 European countries. *Demographic Research*, 31: 247-273.

Vidal, S., Alós, R.Jódar, P. & Beneyto, P. (2014) Membership duration in a Spanish union: a survival analysis. *Economic and Industrial Democracy*, 35(3): 507-529.

White, B., Willmott, L.Cartwright, C. Parker, M. & Williams, G. (2014) Doctors' knowledge of the law on withholding and withdrawing life-sustaining medical treatment. *Medical Journal of Australia*, 201(4): 229-232.

Wilkinson, C., Laslett, A., Ferris, J., Livingston, M., Mugavin, J., Room, R. et al. (2014) The range and magnitude of alcohol's harm to others study: study methodology and measurement challenges. *Australasian Epidemiologist*, 21(2): 12-16.

Working papers

Martinez, A. & Perales, F. (2014) The dynamics of multidimensional poverty in contemporary Australia. *Life Course Centre Working Paper Series*. St Lucia, QLD, Australia: The University of Queensland.

Perales, F. (2014) The costs of being "different": sexual identity and subjective wellbeing over the life course in contemporary Australia. *Life Course Centre Working Paper series*. St. Lucia, QLD, Australia: The University of Queensland.

Perales, F. & Tomaszewski, W. (2014) Happier with the same: job satisfaction of disadvantaged workers. *Life Course Centre Working Paper series*. St Lucia, QLD, Australia: The University of Queensland.

Perales, F., Baffour, B. & Mitrou, F. (2014) Differences in the quality of the interview process between Indigenous and non-Indigenous Australians: implications for survey analysis. *Life Course Centre Working Paper series*. St Lucia, QLD, Australia: The University of Queensland.

Perales, F., Higginson, A., Baxter, J., Western, M., Zubrick, S. R. & Mitrou, F. (2014) 'Intergenerational welfare dependency in Australia: a review of the literature *Life Course Centre Working Paper series*. St Lucia, QLD, Australia: The University of Queensland.

Research reports

Alós R., Beneyto P., Jódar P., Molina O., & Vidal S. (2014) Análisis de las Elecciones sindicales 2003-2012: Participación, Afiliación, Representación; Fundación Primero de Mayo.

Baffour, B., Kapelle, N. & Smith, A. (2014) *She Speaks 2014: A survey of girls and young women aged 15-30 years* Brisbane, QLD, Australia: Institute for Social Science Research.

Bettini, Y. & Head, B.W. (2014). 'Next Practice' Governance for Water Sensitive Cities. *Cooperative Research Centre for Water Sensitive Cities*. Melbourne, Australia.

Ferris, J., Devaney, M., & Mazerolle, L. (2014). Impact of ProjectSTOP on Pseudoephedrine Diversion and Methamphetamine Crime Incidents. *Report to the Criminology Research Grant Program*. The University of Queensland, Queensland: Institute for Social Science Research.

Ferris, J. A., & Devaney, M. (2014). *Queensland alcohol-related assaults (2004–2014): Prepared for Foundation for Alcohol Research and Education*. The University of Queensland, Queensland: Institute for Social Science Research.

Ferris, J. A., Devaney, M., Sparkes-Carroll, M., & Davis, G. (2014). A national examination of Random Breath Testing and alcohol-related traffic crash rates (2000–2012). *Prepared for Foundation for Alcohol Research and Education*. The University of Queensland, Queensland: Institute for Social Science Research.

Habibis, D., Memmott, P., Phillips, R., Go-Sam, C., Keys, C. & Moran, M. (2014). *Housing conditionality, Indigenous lifeworlds and housing policy outcomes: Towards a model for culturally sensitive service provision for the Australian Housing and Urban Research Institute* Queensland Research Centre, Final Report.

Habibis, D., Phillips, R. Phibbs, P. & Verdouw, J. (2014) *Progressing tenancy management reform on remote Indigenous communities: 1-103*. Melbourne, VIC, Australia: Australian Housing and Urban Research Institute (AHURI).

Huinink, J., Kulu, H., Mulder, C. H., Schneider, N. F. & S. Vidal (2014): *The Two Sides of the Same Coin: Challenges of Policy-Making for a Mobile Europe*. *Population & Policy Compact*, Nr. 8, online: <http://www.population-europe.eu/Library/PolicyBrief/5668/en>

Jones, A., Phillips, R., Parsell, C & Dingle, G. (2014) *Review of systemic issues for social housing clients with complex needs* Prepared for Queensland Mental Health Commission. St Lucia QLD, Australia: The University of Queensland, Institute for Social Science Research.

Jones, A. (2014) *Housing options for older people*; Department of Family and Community Services, NSW Government.

Martin, B., Hewitt, B., Yerkes, M. A., Xiang, N., Rose, J., & Coles, L. (2014). *Paid Parental Leave Evaluation: Phase 3 Report*. Brisbane: the Institute of Social Science Research, the University of Queensland prepared for Department of Social Services.

Martin, B., Baird, M., Brady, M., Broadway, B., Hewitt, B., Kalb, G., & Xiang, N. (2014). *PPL Evaluation: Final Report*. Brisbane: the Institute of Social Science Research, the University of Queensland prepared for Department of Social Services.

McFadden, M., O'Flaherty, M., Boreham, P. & Haynes, M. (2014) *Targeting the Profits of Illicit Drug Trafficking through Proceeds of Crime Action*. *National Drug Law Enforcement Research, Monograph Series No. 52*, Commonwealth of Australia. 59 pp. [www.ndlerf.gov.au/sites/default/files/.../monographs/monograph52.pdf](http://www.ndlerf.gov.au/sites/default/files/.../monographs/monograph52.pdf)

Moran, M., Porter, D. & Curth-Bibb, J. (2014) *Funding Indigenous organisations: improving governance performance through innovations in public finance management in remote Australia*.

Petersen, M. & Parsell, C. (2014) *Older women's pathways out of homelessness in Australia: report for the Mercy Foundation* St. Lucia, QLD, Australia: The University of Queensland.

Petersen, M., Parsell, C.Phillips, R. & White, G. (2014) *Preventing first time homelessness amongst older Australians: 1-119*. Melbourne, VIC, Australia: AHURI (Australian Housing and Urban Research Institute).

Povey, J., Kapelle, N. & Martinez, A. (2014). *Queensland school business managers' wellbeing survey*. Final report. Prepared for School Business Managers' Association Queensland. The University of Queensland, Institute for Social Science Research.

Povey, J., Martinez, A. & Baffour, B. (2014). *Cambodia household food safety survey, Final report. Phase II, sanitary and phytosanitary standards management systems project*, Cambodia. Grant 0224-CAM. Prepared for the Asian Development Bank. The University of Queensland, Institute for Social Science Research and UNIQUEST.

Povey, J. (2014). *Inception report: Cambodia household food safety survey. Phase II, sanitary and phytosanitary standards management systems project*, Cambodia. Grant 0224-CAM. Prepared for the Asian Development Bank. The University of Queensland, Institute for Social Science Research and UNIQUEST.

Povey, J. & Rosser, G. (2014). *Group concept testing of 5 translated Gestational Diabetes brochures for Diabetes Queensland*. Final Report. The University of Queensland, Institute for Social Science Research and the Institute for Modern Languages.

Western, M., Haynes, M., Baffour. B. & Perales, F. (2014) *The case for a new Australian birth cohort study: report prepared for the Australian Government Department of Social Services*, September 2014.



---

## CONTACT

General enquiries

Institute for Social Science Research (ISSR)  
The University of Queensland

Business: +61 7 3346 7471

Facsimile: +61 7 3346 7646

Email: [issr@uq.edu.au](mailto:issr@uq.edu.au)

Web: [issr.uq.edu.au/contact-us](http://issr.uq.edu.au/contact-us)

---

