

# Institute for Social Science Research



# The Institute for Social Science Research

The Institute for Social Science Research (ISSR) undertakes transformational, solution-focused research to address new and emerging challenges facing Australian society.

ISSR is an international leader in advanced interdisciplinary and evidence-based social science research, and works collaboratively with government and the private and not-for-profit sectors on pressing social science challenges across four key impact areas:

- Social Policy and Practice
- Health
- Education
- Innovation and Technology.

This research is underpinned by cutting-edge social science methodologies including: advanced data analytics, participatory and innovative qualitative research, observational

and biometric measurement techniques, experimental research designs, and the design and implementation of social intervention evaluations. Our strong focus on co-designed research, and commitment to ongoing training and development, provides significant engagement opportunities for our staff, postdoctoral students and industry partners.

ISSR is the administrative headquarters for the Australian Research Council Centre of Excellence for Children and Families over the Life Course, an international collaboration of 22 organisations working to identify the drivers of deep and persistent disadvantage and develop innovative solutions to address it. From 2020, ISSR will also host a node of the Australian Research Council Centre of Excellence for the Digital Child, as well as a site of the Centre for Social Data Analytics, based at Auckland University of Technology.

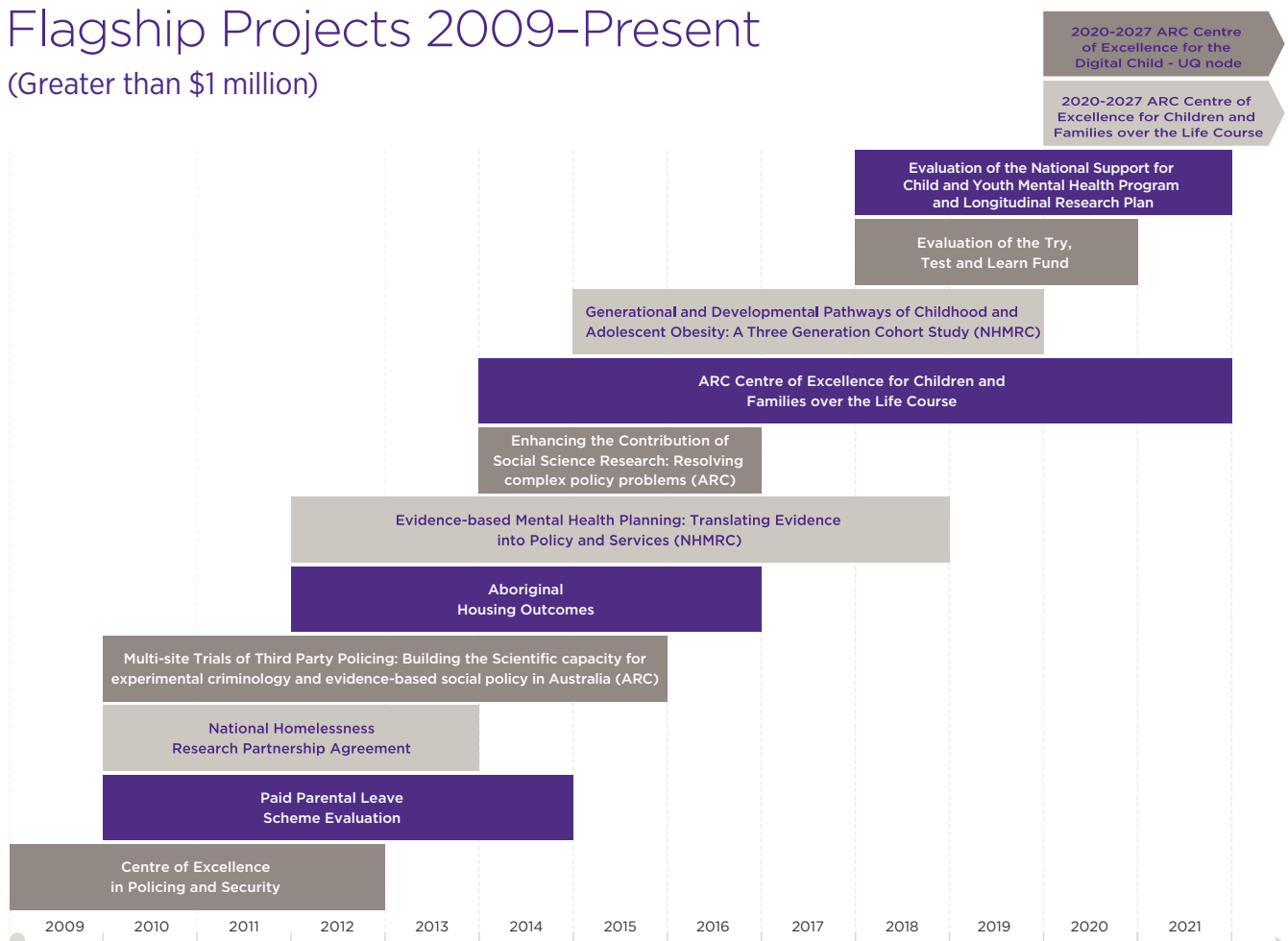
More information about ISSR can be found at [issr.uq.edu.au](http://issr.uq.edu.au).

## ISSR Today

Established in 2008, ISSR has matured into a contemporary, agile organisation that has the capacity to grow in new areas of capability to meet government and industry needs, and to address major societal challenges. We are proud of our unrivalled, interdisciplinary approach to tackling important social science research questions, and of our partnerships with other researchers, funders, industry stakeholders and communities. Our approach and partnerships enable real impact for people, populations, places, services and policy. Effective knowledge exchange and research translation are the foundations for continuing to foster and build these partnerships.

Over the next five years, ISSR will continue to strengthen our reputation as the go-to place for co-developed research, evaluation frameworks, data platforms and surveys, and health, education and social service interventions that make a meaningful difference to people's lives.

## Flagship Projects 2009–Present (Greater than \$1 million)



# ISSR Strategic Plan 2020–2025

VISION	Making meaningful difference to people’s lives				
MISSION	We undertake transformational research to solve critical social challenges				
GOALS	Cultivate an enriching workplace culture	Innovate, collaborate and influence for impact	Deliver uncompromising quality in research and translation		
WHAT WE WILL DO	Ensure growth and sustainability				
	Build stakeholder and partner value				
	Have effective and efficient processes				
	Develop and support our people				
OUR VALUES	Pursuit of excellence	Creativity and independent thinking	Honesty and accountability	Mutual respect and diversity	Supporting our people

## ISSR Capabilities

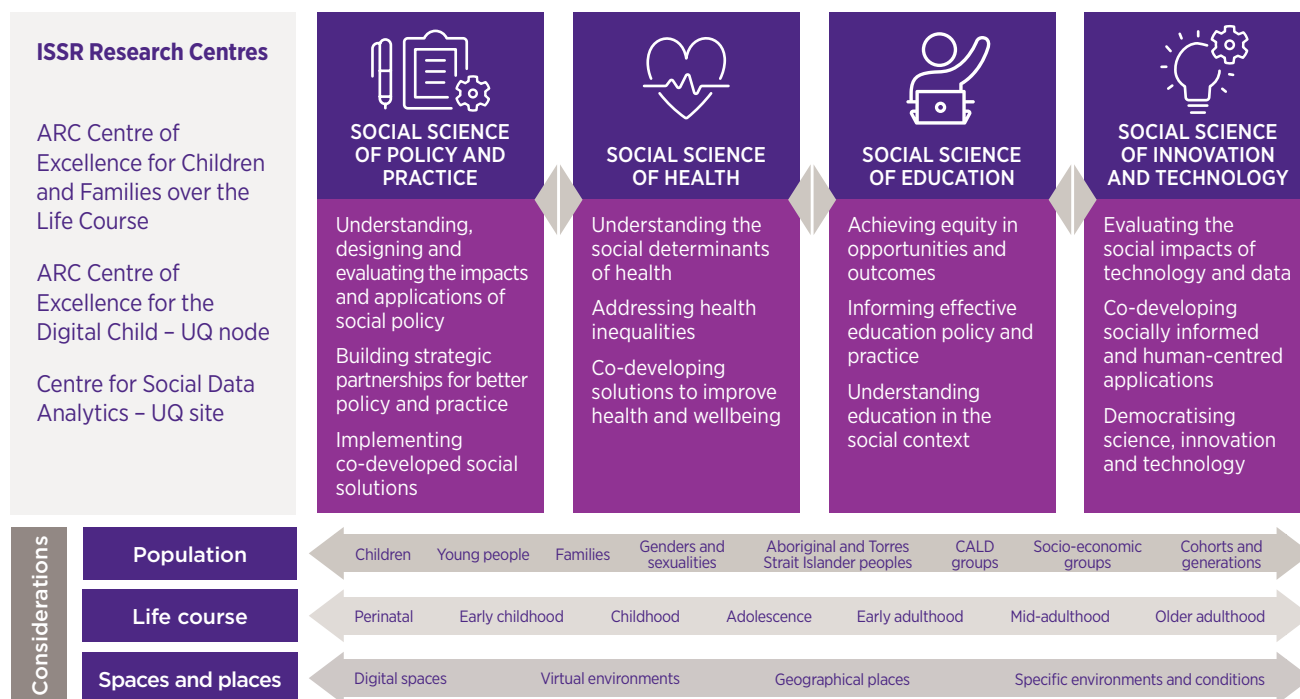
ISSR is a multidisciplinary social science institute that includes researchers from sociology, psychology, economics, political science, public health, anthropology and education. ISSR researchers often partner with other academic researchers and industry to deliver collaborative multidisciplinary social science research to solve real-world problems.

ISSR offers our partners and funders the following services:

- Purpose-built research and training facilities at the UQ Long Pocket Precinct
- Specialist labs for secure data analytics and sleep science
- Co-design capabilities for social solutions
- Data collection and analytics for structured and unstructured numeric and non-numeric data, including data from:
  - surveys
  - administrative and operational service databases
  - in situ observations
  - biometrics
  - physical environments (e.g. light intensity and physical design)
  - internet and social media content
- Research design for lab and field experiments — qualitative and quantitative, quasi-experimental, observational and naturalistic designs
- Advanced data analytics including machine learning/AI for classification, prediction and decision support
- Policy and program impact and process evaluations, performance monitoring and assessments
- Bespoke and generalised training and professional development for researchers, policy makers, data consumers, and in policy and practice areas such as sleep science and applied Indigenous development programming
- Researcher exchanges and internships
- Higher Degree by Research supervision

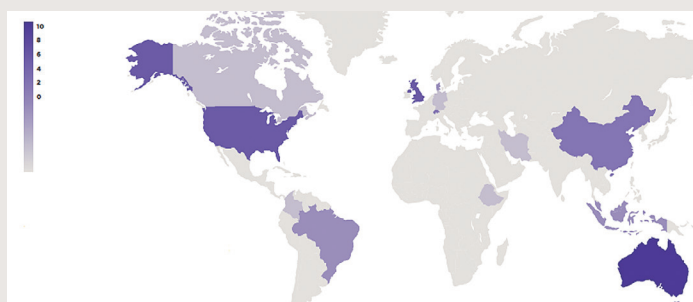


# ISSR Impact Areas 2020–2025

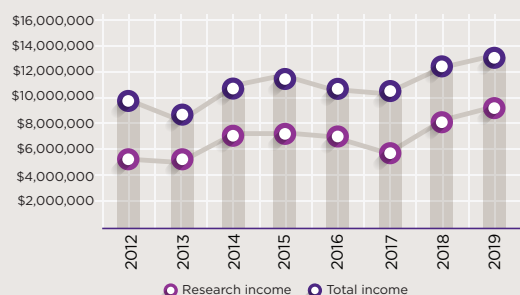


## ISSR at a Glance (in 2019)

### ISSR Co-authors



### ISSR Income



**35+ Partners & funders**

**110+ Journal articles/year**  
38% in top tier journals

**130+ Participants**  
in commercial training courses

### People

**53 Research staff**  
(excluding casual staff)

**17 Professional staff**

**40 Higher Degree**  
by Research students

# ISSR Research Leaders

Applying cross-disciplinary approaches to contemporary social issues

ISSR research leaders are recognised nationally and internationally for their thought leadership. They work across the Institute and beyond their disciplines to deliver solution-focused research in areas of contemporary importance.



**Professor  
Mark Western**  
Director Institute for  
Social Science Research



**Professor  
Karen Thorpe**  
Group Leader Early  
Childhood Development &  
Care



**Professor  
Janeen Baxter**  
Director Life Course Centre



**Professor  
Rhema Vaithianathan**  
Group Leader Social Data  
Analytics



**Professor  
Lisa McDaid**  
Group Leader Social Science  
& Health



**Professor  
Mark Moran**  
Group Leader Development  
Effectiveness



**Professor  
Tim Reddel**  
Group Leader Social Solutions



**Professor  
Simon Smith**  
Group Leader Sleep & Health



**Associate Professor  
Abdullah Mamun**  
Group Leader Health &  
Society



**Associate Professor  
Fran Boyle**  
Group Leader Health Services  
Research



**Associate Professor  
Wojtek Tomaszewski**  
Group Leader Education,  
Employment & Disadvantage



**Dr Jenny Povey**  
Group Leader Social &  
Educational Disadvantage



**Dr Sally Staton**  
Group Leader Child  
Development



**Dr Caroline Salom**  
Group Leader Substance  
Use & Mental Health

# ISSR Research Centres

## ARC Centre of Excellence for Children and Families over the Life Course

The Australian Research Council Centre of Excellence for Children and Families over the Life Course (the Life Course Centre) is a national research centre investigating the critical factors underlying disadvantage to provide life-changing solutions for policy and service delivery. Established in 2014, and awarded an additional seven years of funding in 2019, the Centre is administered by The University of Queensland. The Life Course Centre is a collaboration with The University of Sydney, The University of Melbourne and The University of Western Australia as well as international partners and experts. It is supported by key government agencies that are responsible for developing and implementing Australia's social and economic welfare programs, and by non-government organisations working at the front line to deal with real-world problems of poverty and disadvantage.

## ARC Centre of Excellence for the Digital Child – UQ node

The Australian Research Council Centre of Excellence for the Digital Child, led by Queensland University of Technology, will be established in 2020. ISSR researchers Professor Karen Thorpe, Associate Professor Simon Smith and Dr Sally Staton will be chief investigators and will lead a node of the Centre at ISSR. The Centre's vision is for Australian children to be healthy, educated and connected. This Centre will integrate child health, education, and digital and social connectedness, innovating across disciplines to meet Australia's ongoing challenges of supporting young children growing up in a rapidly changing digital age.

## Centre for Social Data Analytics – UQ site

ISSR is establishing a site of the Centre for Social Data Analytics, which is based at Auckland University of Technology. The Centre applies strong data science to linked data, undertaking research that tells us new things about the human experience. These valuable insights can measure the impact of social interventions, identify the need for new policy and predict the likely outcomes for individuals and groups in society. The Centre's focus is on linked data that tells stories about health care, children, families and education.

For more information about our Research Centres visit our website:

[issr.uq.edu.au/issr\\_research\\_centres](https://issr.uq.edu.au/issr_research_centres)



## Institute for Social Science Research

The University of Queensland  
Long Pocket Precinct  
Level 2, Cycad Building (1018)  
80 Meiers Road  
Indooroopilly, Brisbane,  
Queensland 4068,  
Australia

**E:** [issr@uq.edu.au](mailto:issr@uq.edu.au)  
**T:** +61 7 3346 7471  
**W:** [issr.uq.edu.au](https://issr.uq.edu.au)